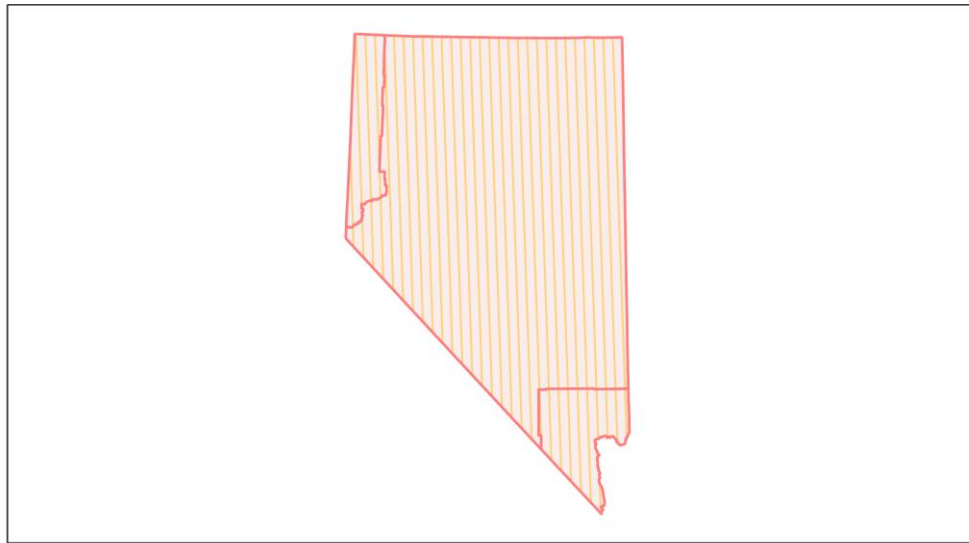
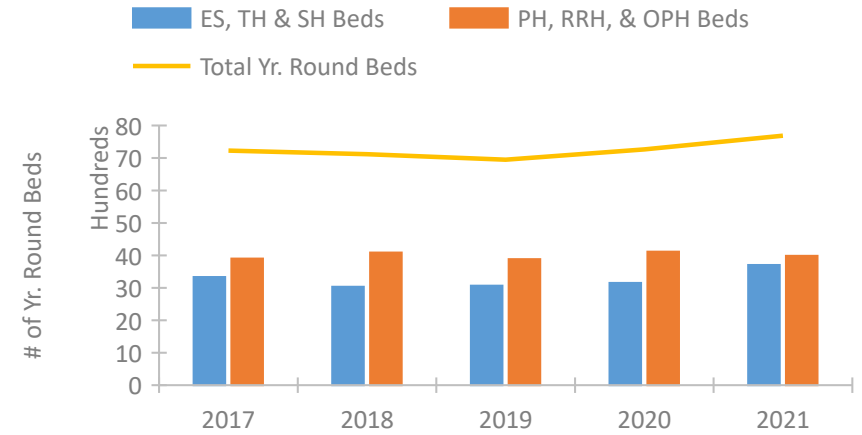


Nevada Continuum of Care Performance Profile

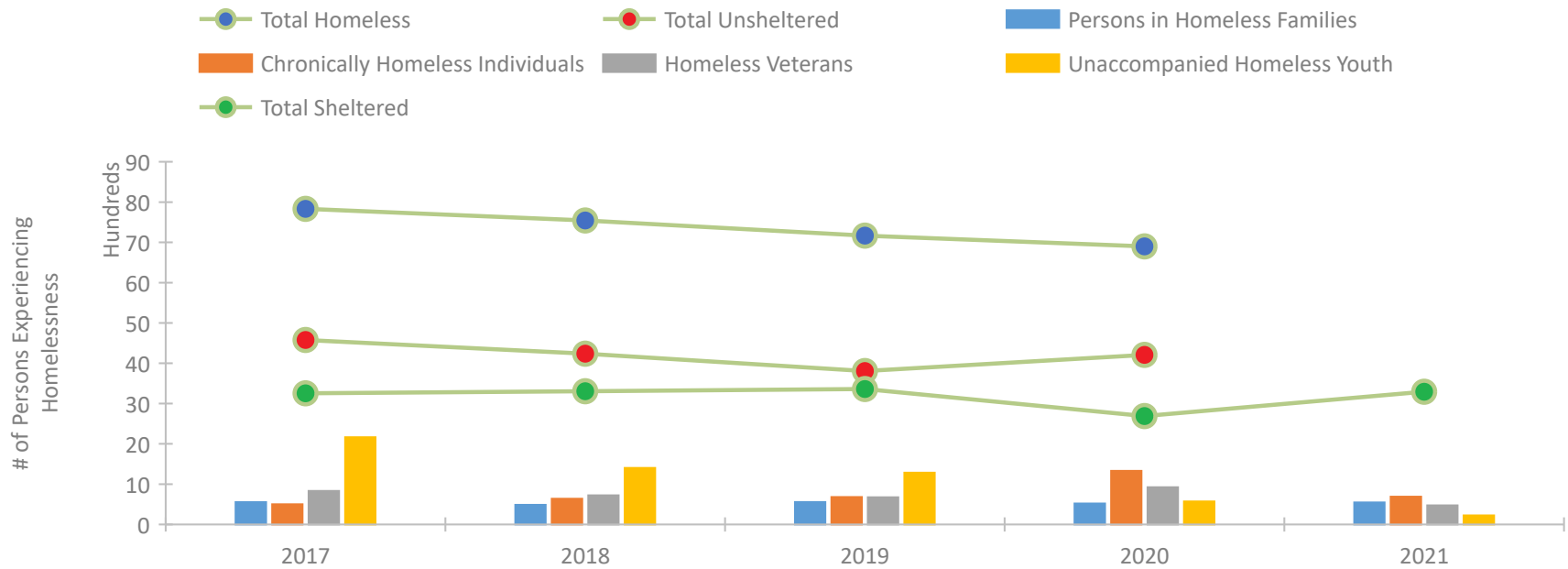


2021 CoC Boundaries
 2020 CoC Boundaries

Housing Inventory Count by Program Type



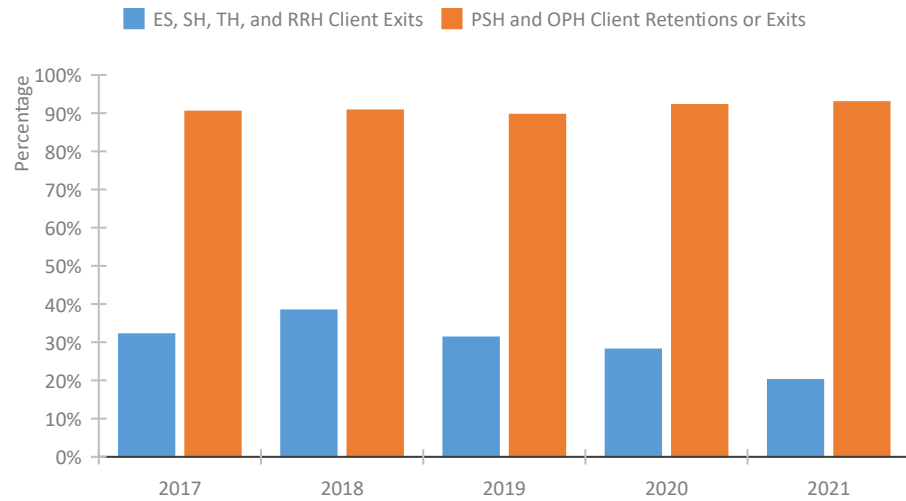
Homeless Population – Point-in-Time (PIT) Count*



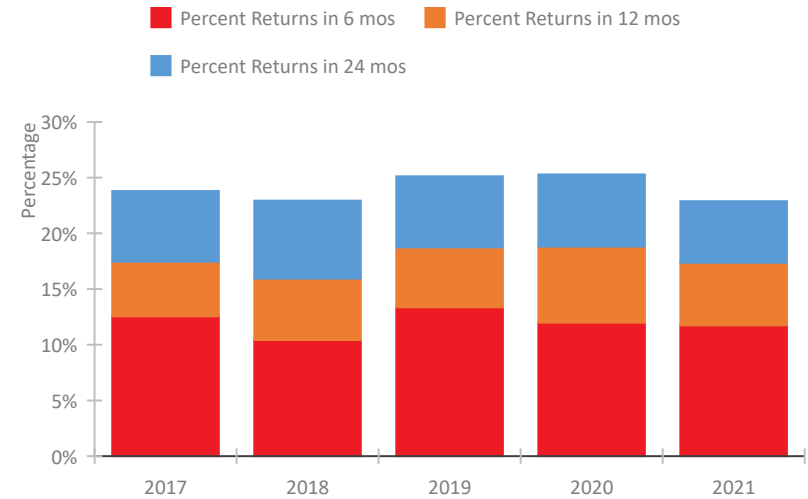
*In 2021, HUD gave communities the option to cancel or modify the unsheltered survey portion of their counts based on the potential risk of COVID-19 transmission associated with conducting an in-person survey. As a result, HUD has excluded the unsheltered population sub-totals and all unsheltered sub-population data for this reporting period. The user is cautioned that the unsheltered and total homeless counts reported here may be missing data.

Nevada Continuum of Care Performance Profile

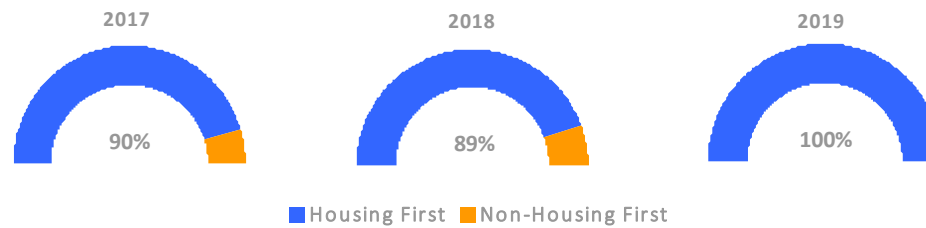
Exits to Permanent Housing by Program Type



Returns to Homelessness Over Time



Proportion of Housing First Projects by Year†



Number of Projects by Year

	2017	2018	2019
Housing First Projects	38	41	42
Non-Housing First Projects	4	5	0

†2021 Data unavailable at the time of report publication. In 2020 HUD awarded renewal projects noncompetitively, therefore no new data was collected and Housing First data remains the same from 2019 to 2020.

Data Summary: Nevada

Point-In-Time Count Summary*

	2017	2018	2019	2020	2021	2020-21 Change	% Change
Number of Sheltered Persons in Families	534	432	505	478	545	67	14%
Number of Unsheltered Persons in Families	18	54	50	41	0	-41	-100%
Number of Sheltered Individuals	2,721	2,873	2,857	2,213	2,748	535	24%
Number of Unsheltered Individuals	4,560	4,185	3,757	4,168	--	--	--
Total Homeless Persons	7,833	7,544	7,169	6,900	3,293	-3,607	-52%
Number of Sheltered Families	179	151	169	147	171	24	16%
Number of Unsheltered Families	7	16	14	12	--	--	--
Number of Total Families	186	167	183	159	171	12	8%
Sheltered Chronically Homeless Individuals	121	264	516	390	689	299	77%
Unsheltered Chronically Homeless Individuals	381	373	163	941	--	--	--
Total Chronically Homeless Individuals	502	637	679	1,331	689	-642	-48%
Sheltered Veterans	492	530	509	522	475	-47	-9%
Unsheltered Veterans	340	193	165	402	--	--	--
Total Veterans	832	723	674	924	475	-449	-49%
Sheltered Unaccompanied Youth (up to 24)	235	227	273	224	224	0	0%
Unsheltered Unaccompanied Youth (up to 24)	1,931	1,177	1,012	346	--	--	--
Total Unaccompanied Youth (up to 24)	2,166	1,404	1,285	570	224	-346	-61%

System Performance Measures Summary

	2017	2018	2019	2020	2021	2020-21 Change	% Change
Rate People Return to Homelessness in 6 Months	12.6%	10.4%	13.4%	12.0%	11.7%	-0.2%	N/A
Number of People who are Homeless for the First Time	10,902	10,081	10,093	6,627	12,629	6,002	90.6%
Rate People Exit from ES, SH, TH, and RRH to PH	32.1%	38.3%	31.2%	28.1%	20.1%	-8%	N/A
Rate People in PSH and OPH Retain or Exit to PH	90.4%	90.7%	89.6%	92.1%	92.9%	0.7%	N/A

Housing Inventory Count Summary

	2017	2018	2019	2020	2021	2020-21 Change	% Change
Emergency Shelter (ES)	1,994	1,736	1,938	2,083	2,646	563	27%
Transitional Housing (TH)	1,312	1,082	1,100	1,045	1,056	11	1%
Permanent Supportive Housing (PSH)	3,201	3,318	3,232	2,947	2,851	-96	-3%
Rapid Re-Housing (RRH)	698	700	622	1,115	1,058	-57	-5%
Other Permanent Housing (OPH)	--	68	31	50	76	26	52%

Award Summary

	2017	2018	2019	2020	2021	2020-21 Change	% Change
Continuum of Care (CoC)	\$15,862,842	\$16,460,020	\$16,190,343	\$17,834,762	\$18,907,960	\$1,073,198	6%
Emergency Solutions Grants (ESG)	\$1,796,655	\$1,819,444	\$1,906,214	\$1,963,431	\$1,959,913	(\$3,518)	0%

*In 2021, HUD gave communities the option to cancel or modify the unsheltered survey portion of their counts based on the potential risk of COVID-19 transmission associated with conducting an in-person survey. As a result, HUD has excluded the unsheltered population sub-totals and all unsheltered sub-population data for this reporting period. The user is cautioned that the unsheltered and total homeless counts reported here may be missing data.