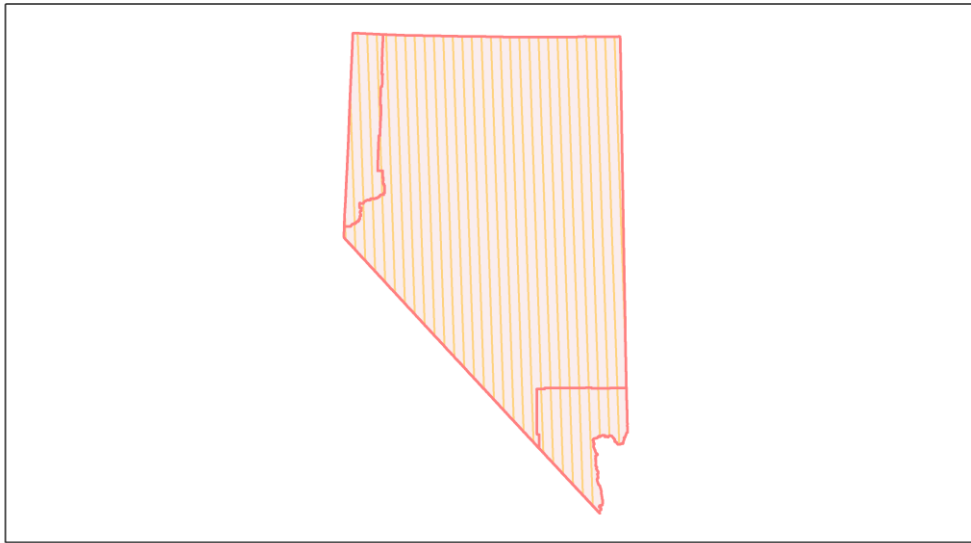
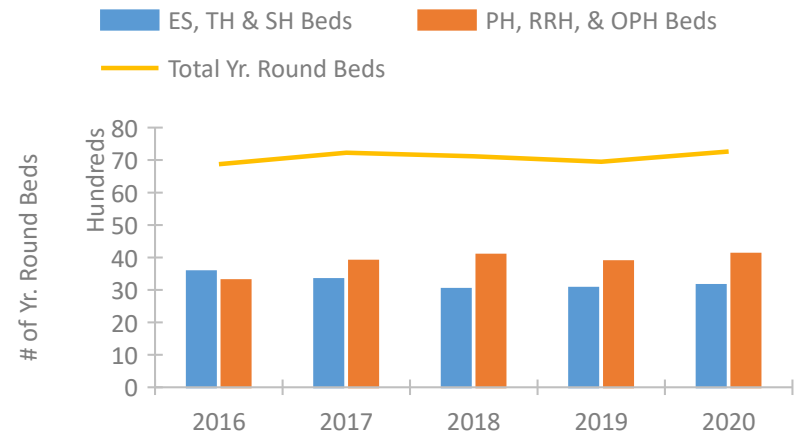


Nevada Continuum of Care Performance Profile

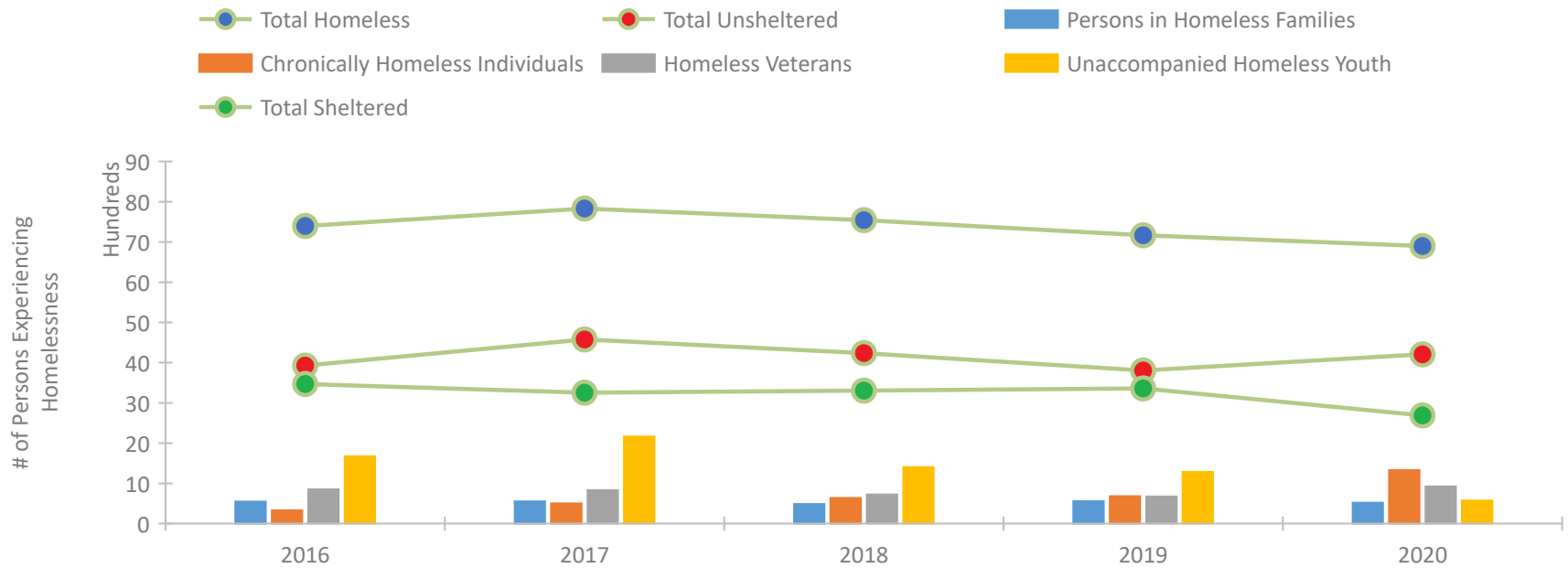


2020 CoC Boundaries 2019 CoC Boundaries

Housing Inventory Count by Program Type

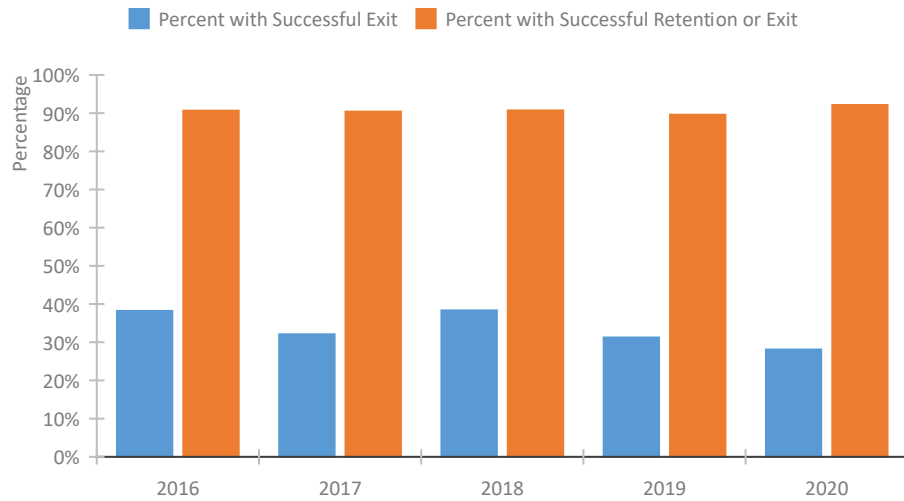


Homeless Population – Point-in-Time (PIT) Count

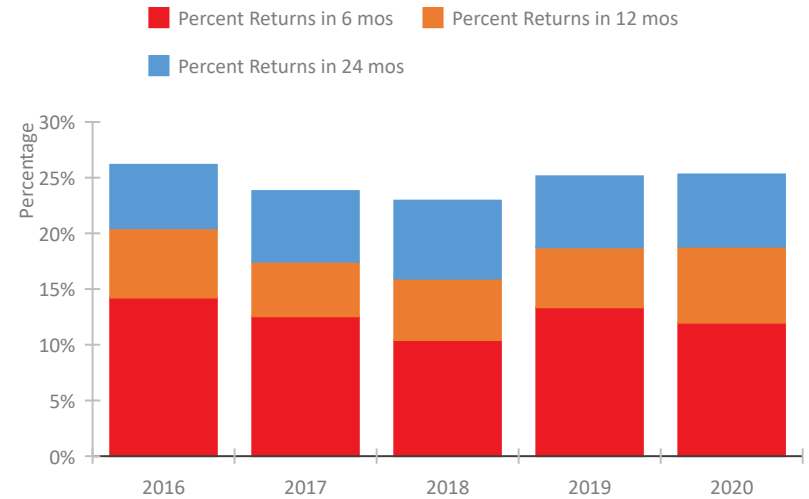


Nevada Continuum of Care Performance Profile

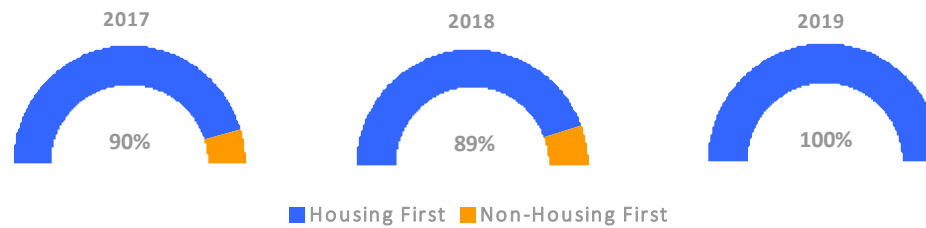
Exits to Permanent Housing by Program Type



Returns to Homelessness Over Time



Proportion of Housing First Projects by Year*



Number of Projects by Year			
	2017	2018	2019
Housing First Projects	38	41	42
Non-Housing First Projects	4	5	0

*In 2020 HUD awarded renewal projects noncompetitively, therefore no new data was collected and Housing First data remains the same from 2019 to 2020.

Data Summary: Nevada

Point-In-Time Count Summary

	2016	2017	2018	2019	2020	2019-20 Change	% Change
Number of Sheltered Persons in Families	534	534	432	505	478	-27	-5%
Number of Unsheltered Persons in Families	11	18	54	50	41	-9	-18%
Number of Sheltered Individuals	2,937	2,721	2,873	2,857	2,213	-644	-23%
Number of Unsheltered Individuals	3,916	4,560	4,185	3,757	4,168	411	11%
Total Homeless Persons	7,398	7,833	7,544	7,169	6,900	-269	-4%
Number of Sheltered Families	176	179	151	169	147	-22	-13%
Number of Unsheltered Families	4	7	16	14	12	-2	-14%
Number of Total Families	180	186	167	183	159	-24	-13%
Sheltered Chronically Homeless Individuals	45	121	264	516	390	-126	-24%
Unsheltered Chronically Homeless Individuals	285	381	373	163	941	778	477%
Total Chronically Homeless Individuals	330	502	637	679	1,331	652	96%
Sheltered Veterans	437	492	530	509	522	13	3%
Unsheltered Veterans	414	340	193	165	402	237	144%
Total Veterans	851	832	723	674	924	250	37%
Sheltered Unaccompanied Youth (up to 24)	309	235	227	273	224	-49	-18%
Unsheltered Unaccompanied Youth (up to 24)	1,363	1,931	1,177	1,012	346	-666	-66%
Total Unaccompanied Youth (up to 24)	1,672	2,166	1,404	1,285	570	-715	-56%

System Performance Measures Summary

	2016	2017	2018	2019	2020	2019-20 Change	% Change
Rate People Return to Homelessness in 6 Months	14.2%	12.6%	10.4%	13.4%	12.0%	-1.4%	N/A
Number of People who are Homeless for the First Time	10,117	10,902	10,081	10,093	6,627	-3,466	-34.3%
Rate People Exit from ES, SH, TH, and RRH to PH	38.2%	32.1%	38.3%	31.2%	28.1%	-3.2%	N/A
Rate People in PSH and OPH Retain or Exit to PH	90.6%	90.4%	90.7%	89.6%	92.1%	2.6%	N/A

Housing Inventory Count Summary

	2016	2017	2018	2019	2020	2019-20 Change	% Change
Emergency Shelter (ES)	2,198	1,994	1,736	1,938	2,083	145	7%
Safe Haven (SH)	25	25	215	25	25	0	-0%
Transitional Housing (TH)	1,354	1,312	1,082	1,100	1,045	-55	-5%
Permanent Supportive Housing (PSH)	2,778	3,201	3,318	3,232	2,947	-285	-9%
Rapid Re-Housing (RRH)	521	698	700	622	1,115	493	79%
Other Permanent Housing (OPH)	--	--	68	31	50	19	61%

Award Summary

	2016	2017	2018	2019	2020	2019-20 Change	% Change
Continuum of Care (CoC)	\$15,762,359	\$15,862,842	\$16,460,020	\$16,190,343	\$17,834,762	\$1,644,419	10%
Emergency Solutions Grants (ESG)	\$1,791,286	\$1,796,655	\$1,819,444	\$1,906,214	\$1,963,431	\$57,217	3%