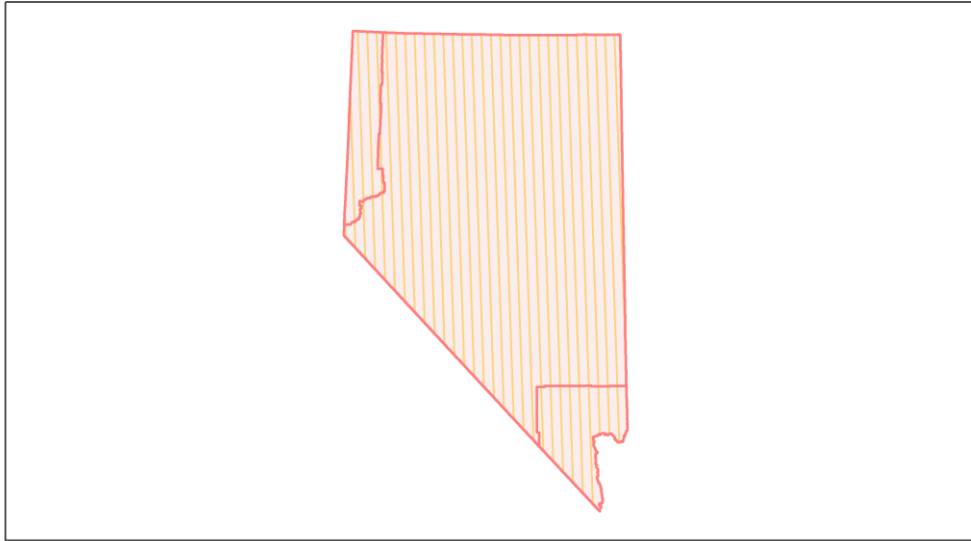
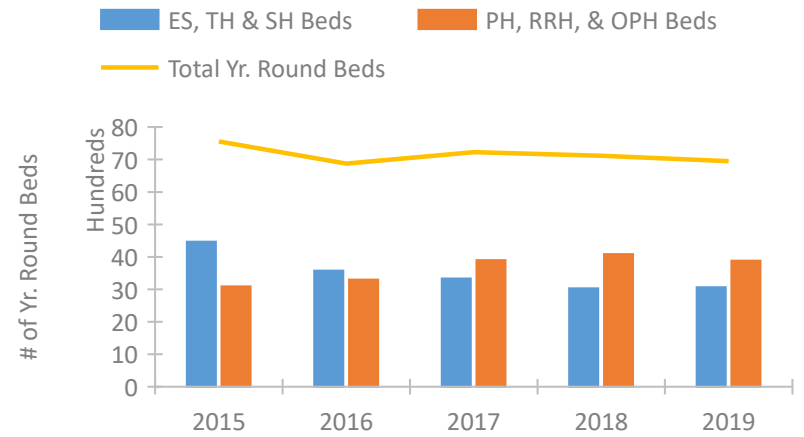


Nevada Continuum of Care Performance Profile

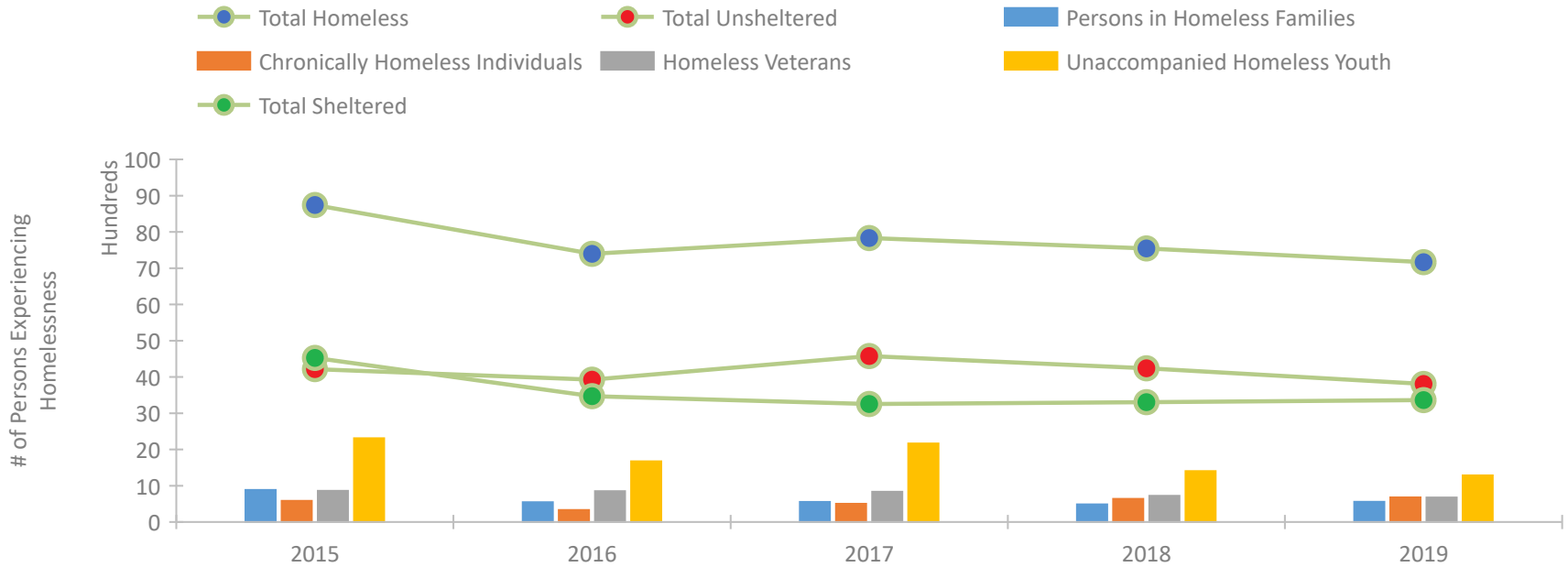


2019 CoC Boundaries 2018 CoC Boundaries

Housing Inventory Count by Program Type

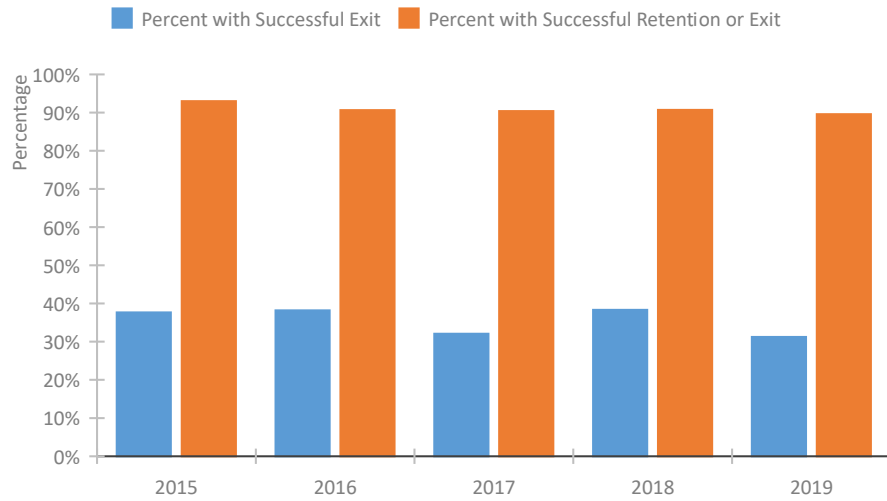


Homeless Population – Point-in-Time (PIT) Count

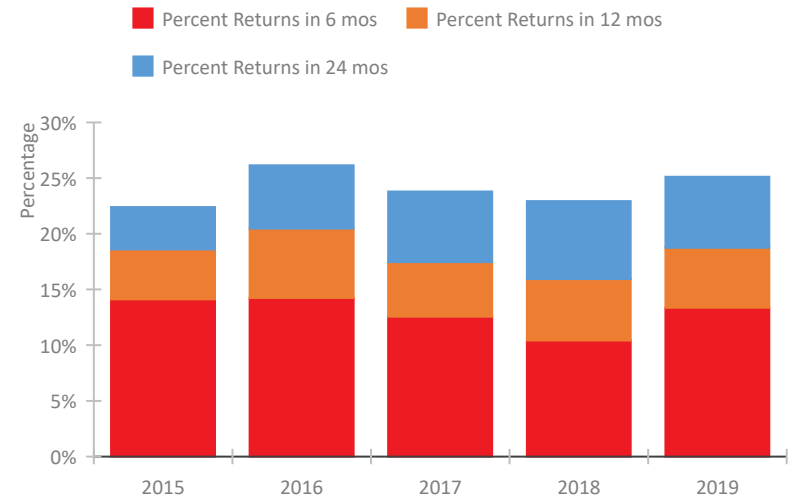


Nevada Continuum of Care Performance Profile

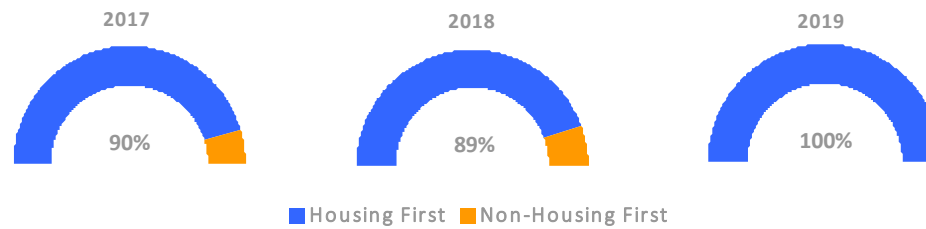
Exits to Permanent Housing by Program Type



Returns to Homelessness Over Time



Proportion of Housing First Projects by Year



Number of Projects by Year

	2017	2018	2019
Housing First Projects	38	41	42
Non-Housing First Projects	4	5	0

Data Summary: Nevada

Point-In-Time Count Summary

	2015	2016	2017	2018	2019	2018-19 Change	% Change
Number of Sheltered Persons in Families	882	534	534	432	505	73	17%
Number of Unsheltered Persons in Families	3	11	18	54	50	-4	-7%
Number of Sheltered Individuals	3,646	2,937	2,721	2,873	2,857	-16	-1%
Number of Unsheltered Individuals	4,212	3,916	4,560	4,185	3,757	-428	-10%
Total Homeless Persons	8,743	7,398	7,833	7,544	7,169	-375	-5%
Number of Sheltered Families	278	176	179	151	169	18	12%
Number of Unsheltered Families	1	4	7	16	14	-2	-12%
Number of Total Families	279	180	186	167	183	16	10%
Sheltered Chronically Homeless Individuals	108	45	121	264	516	252	95%
Unsheltered Chronically Homeless Individuals	477	285	381	373	163	-210	-56%
Total Chronically Homeless Individuals	585	330	502	637	679	42	7%
Sheltered Veterans	516	437	492	530	509	-21	-4%
Unsheltered Veterans	344	414	340	193	165	-28	-15%
Total Veterans	860	851	832	723	674	-49	-7%
Sheltered Unaccompanied Youth (up to 24)	288	309	235	227	273	46	20%
Unsheltered Unaccompanied Youth (up to 24)	2,022	1,363	1,931	1,177	1,012	-165	-14%
Total Unaccompanied Youth (up to 24)	2,310	1,672	2,166	1,404	1,285	-119	-8%

System Performance Measures Summary

	2015	2016	2017	2018	2019	2018-19 Change	% Change
Rate People Return to Homelessness in 6 Months	14.1%	14.2%	12.6%	10.4%	13.4%	2.9%	N/A
Number of People who are Homeless for the First Time	11,016	10,117	10,902	10,081	10,093	12	0.1%
Rate People Exit from ES, SH, TH, and RRH to PH	37.7%	38.2%	32.1%	38.3%	31.2%	-7.1%	N/A
Rate People in PSH and OPH Retain or Exit to PH	93.0%	90.6%	90.4%	90.7%	89.6%	-1.1%	N/A

Housing Inventory Count Summary

	2015	2016	2017	2018	2019	2018-19 Change	% Change
Emergency Shelter (ES)	2,904	2,198	1,994	1,736	1,938	202	12%
Safe Haven (SH)	25	25	25	215	25	-190	-88%
Transitional Housing (TH)	1,537	1,354	1,312	1,082	1,100	18	2%
Permanent Supportive Housing (PSH)	2,587	2,778	3,201	3,318	3,232	-86	-3%
Rapid Re-Housing (RRH)	447	521	698	700	622	-78	-11%
Other Permanent Housing (OPH)	56	--	--	68	31	-37	-54%

Award Summary

	2015	2016	2017	2018	2019	2018-19 Change	% Change
Continuum of Care (CoC)	\$15,654,838	\$15,762,359	\$15,862,842	\$16,460,020	\$16,190,343	(\$269,677)	-2%
Emergency Solutions Grants (ESG)	\$1,709,806	\$1,791,286	\$1,796,655	\$1,819,444	\$1,906,214	\$86,770	5%