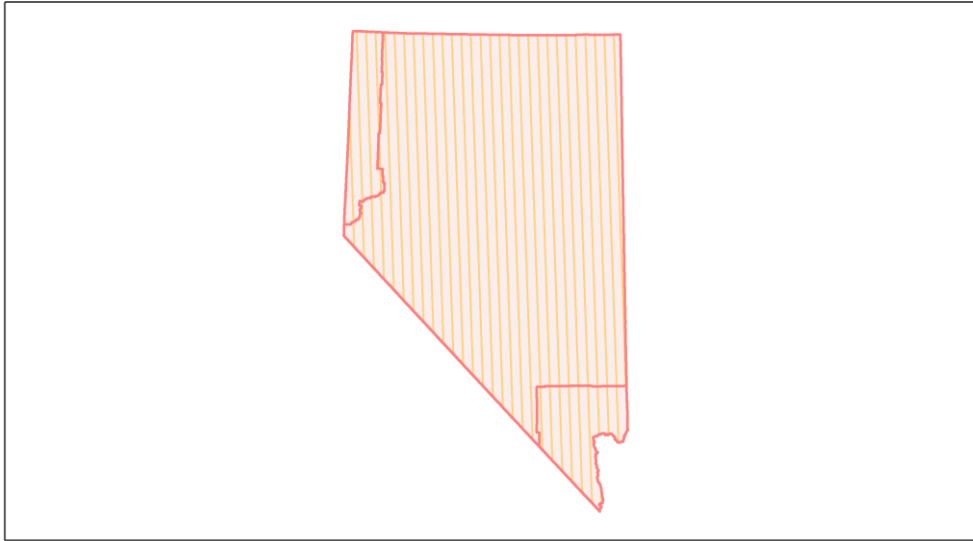
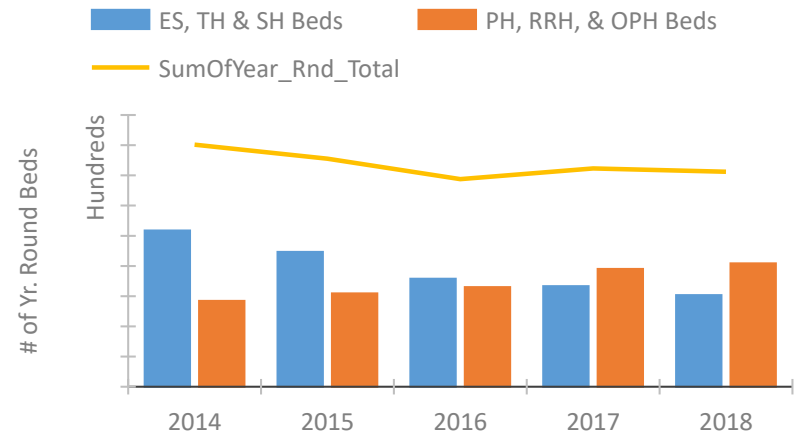


## Nevada Continuum of Care Performance Profile

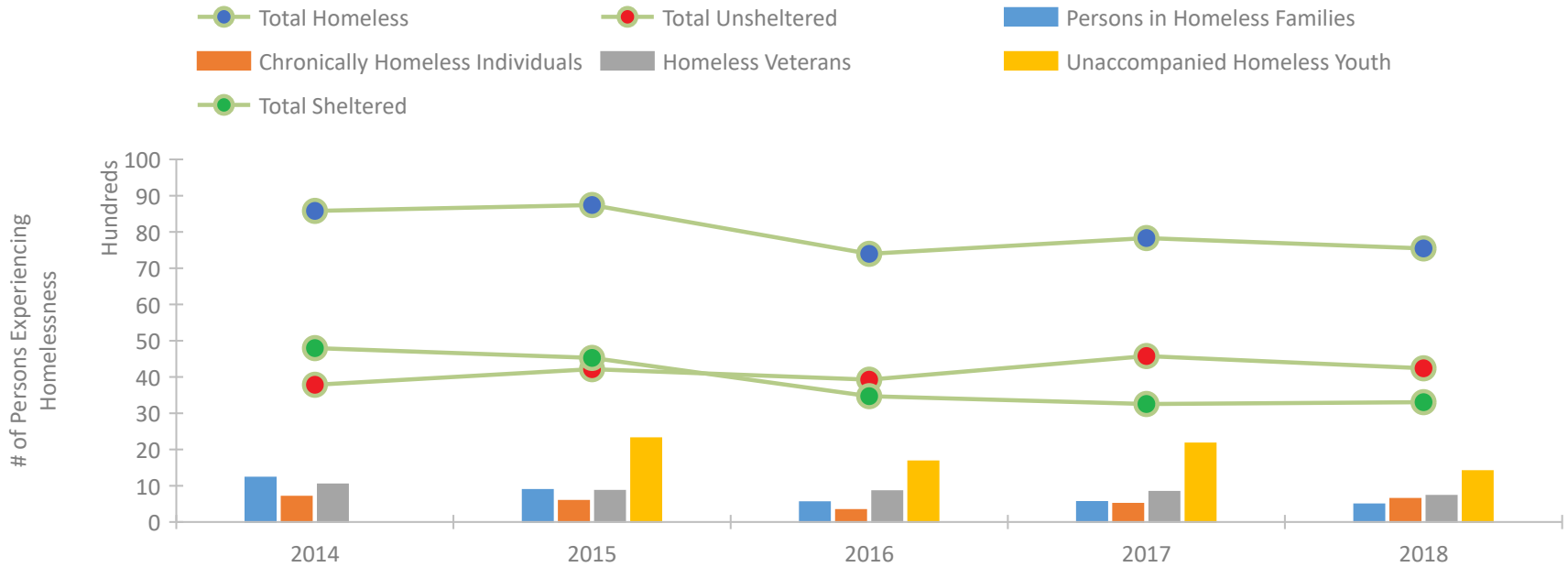


2018 CoC Boundaries 2017 CoC Boundaries

### Housing Inventory Count by Program Type

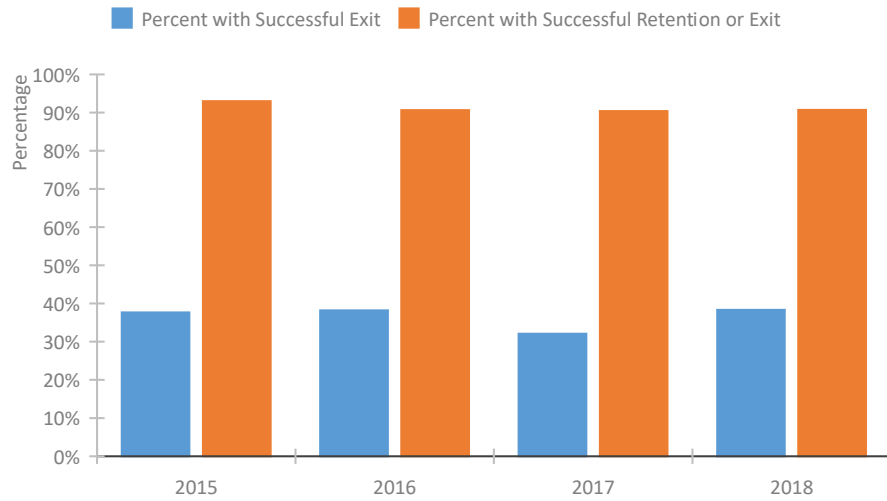


### Homeless Population – Point-in-Time (PIT) Count

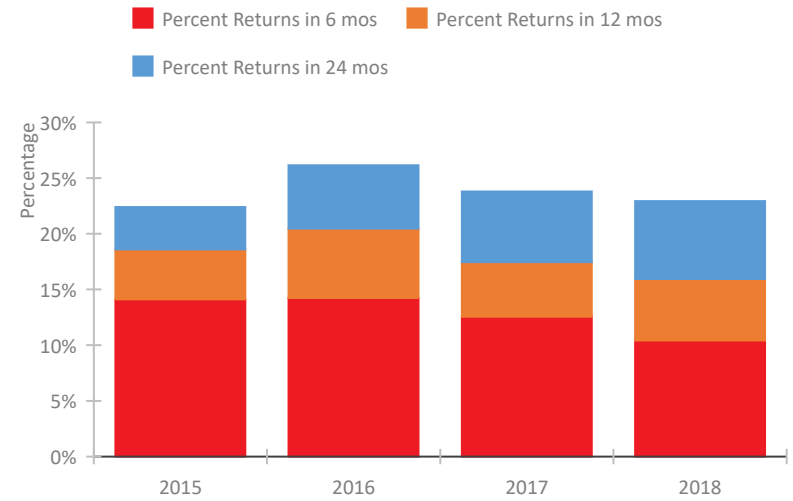


## Nevada Continuum of Care Performance Profile

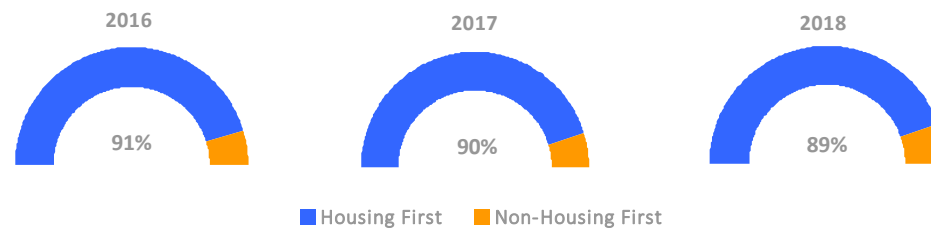
### Exits to Permanent Housing by Program Type



### Returns to Homelessness Over Time



### Proportion of Housing First Projects by Year



### Number of Projects by Year

|                            | 2016 | 2017 | 2018 |
|----------------------------|------|------|------|
| Housing First Projects     | 39   | 38   | 41   |
| Non-Housing First Projects | 4    | 4    | 5    |

## Data Summary: Nevada

### Point-In-Time Count Summary

|   | 2014         | 2015         | 2016         | 2017         | 2018         | 2017-18 Change | % Change    |
|---|--------------|--------------|--------------|--------------|--------------|----------------|-------------|
| Number of Sheltered Persons in Families       | 1,226        | 882          | 534          | 534          | 432          | -102           | -19%        |
| Number of Unsheltered Persons in Families     | 0            | 3            | 11           | 18           | 54           | 36             | 200%        |
| Number of Sheltered Individuals               | 3,533        | 3,629        | 2,907        | 2,696        | 2,836        | 140            | 5%          |
| Number of Unsheltered Individuals             | 3,041        | 3,396        | 3,652        | 4,321        | 3,988        | -333           | -8%         |
| <b>Total Homeless Persons</b>                 | <b>7,800</b> | <b>7,910</b> | <b>7,104</b> | <b>7,569</b> | <b>7,310</b> | <b>-259</b>    | <b>-3%</b>  |
| Number of Sheltered Families                  | 397          | 278          | 176          | 179          | 151          | -28            | -16%        |
| Number of Unsheltered Families                | 0            | 1            | 4            | 7            | 16           | 9              | 129%        |
| <b>Number of Total Families</b>               | <b>397</b>   | <b>279</b>   | <b>180</b>   | <b>186</b>   | <b>167</b>   | <b>-19</b>     | <b>-10%</b> |
| Sheltered Chronically Homeless Individuals    | 96           | 108          | 45           | 121          | 264          | 143            | 118%        |
| Unsheltered Chronically Homeless Individuals  | 601          | 477          | 285          | 381          | 373          | -8             | -2%         |
| <b>Total Chronically Homeless Individuals</b> | <b>697</b>   | <b>585</b>   | <b>330</b>   | <b>502</b>   | <b>637</b>   | <b>135</b>     | <b>27%</b>  |
| Sheltered Veterans                            | 546          | 516          | 437          | 492          | 530          | 38             | 8%          |
| Unsheltered Veterans                          | 490          | 344          | 414          | 340          | 193          | -147           | -43%        |
| <b>Total Veterans</b>                         | <b>1,036</b> | <b>860</b>   | <b>851</b>   | <b>832</b>   | <b>723</b>   | <b>-109</b>    | <b>-13%</b> |
| Sheltered Unaccompanied Youth (up to 24)      | --           | 288          | 309          | 235          | 227          | -8             | -3%         |
| Unsheltered Unaccompanied Youth (up to 24)    | --           | 2,022        | 1,363        | 1,931        | 1,177        | -754           | -39%        |
| <b>Total Unaccompanied Youth (up to 24)</b>   | <b>--</b>    | <b>2,310</b> | <b>1,672</b> | <b>2,166</b> | <b>1,404</b> | <b>-762</b>    | <b>-35%</b> |

### System Performance Measures Summary

|  | 2014 | 2015   | 2016   | 2017   | 2018   | 2017-18 Change | % Change |
|--|------|--------|--------|--------|--------|----------------|----------|
| Rate People Return to Homelessness in 6 Months       | N/A  | 14.1%  | 14.2%  | 12.6%  | 10.4%  | -2.1%          | N/A      |
| Number of People who are Homeless for the First Time | N/A  | 11,016 | 10,117 | 10,902 | 10,081 | -821           | -7.5%    |
| Rate People Exit from ES, SH, TH, and RRH to PH      | N/A  | 37.7%  | 38.2%  | 32.1%  | 38.3%  | 6.3%           | N/A      |
| Rate People in PSH and OPH Retain or Exit to PH      | N/A  | 93.0%  | 90.6%  | 90.4%  | 90.7%  | 0.3%           | N/A      |

### Housing Inventory Count Summary

|                                    | 2014  | 2015  | 2016  | 2017  | 2018  | 2017-18 Change | % Change |
|------------------------------------|-------|-------|-------|-------|-------|----------------|----------|
| Emergency Shelter (ES)             | 3,523 | 2,904 | 2,198 | 1,994 | 1,736 | -258           | -13%     |
| Safe Haven (SH)                    | 25    | 25    | 25    | 25    | 215   | 190            | 760%     |
| Transitional Housing (TH)          | 1,627 | 1,537 | 1,354 | 1,312 | 1,082 | -230           | -18%     |
| Permanent Supportive Housing (PSH) | 2,842 | 2,587 | 2,778 | 3,201 | 3,318 | 117            | 4%       |
| Rapid Re-Housing (RRH)             | --    | 447   | 521   | 698   | 700   | 2              | 0%       |
| Other Permanent Housing (OPH)      | --    | 56    | --    | --    | 68    | --             | --       |

### Award Summary

|   | 2014         | 2015         | 2016         | 2017         | 2018         | 2017-18 Change | % Change |
|---|--------------|--------------|--------------|--------------|--------------|----------------|----------|
| <b>Continuum of Care (CoC)</b>          | \$14,798,196 | \$15,654,838 | \$15,762,359 | \$15,862,842 | \$16,460,020 | \$597,178      | 4%       |
| <b>Emergency Solutions Grants (ESG)</b> | \$1,538,531  | \$1,709,806  | \$1,791,286  | \$1,796,655  | \$1,819,444  | \$22,789       | 1%       |