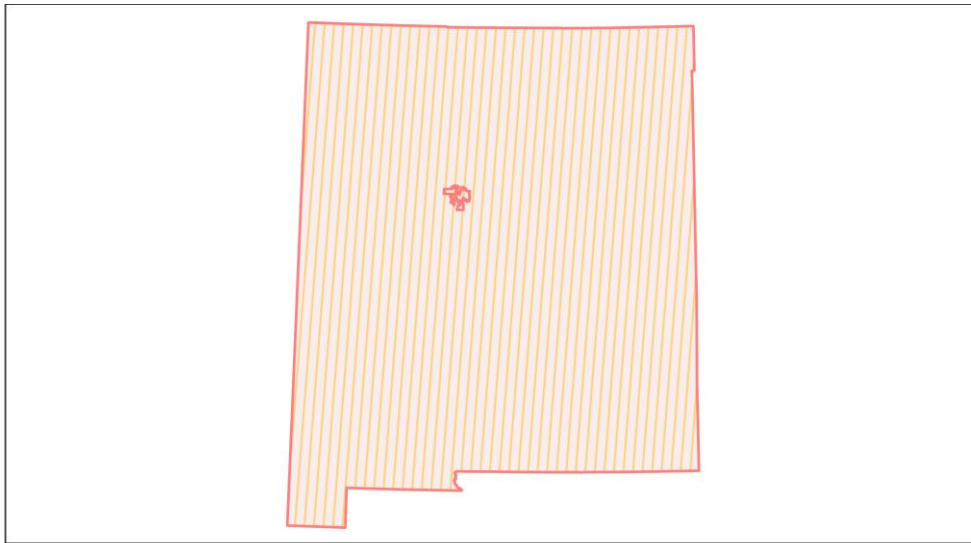
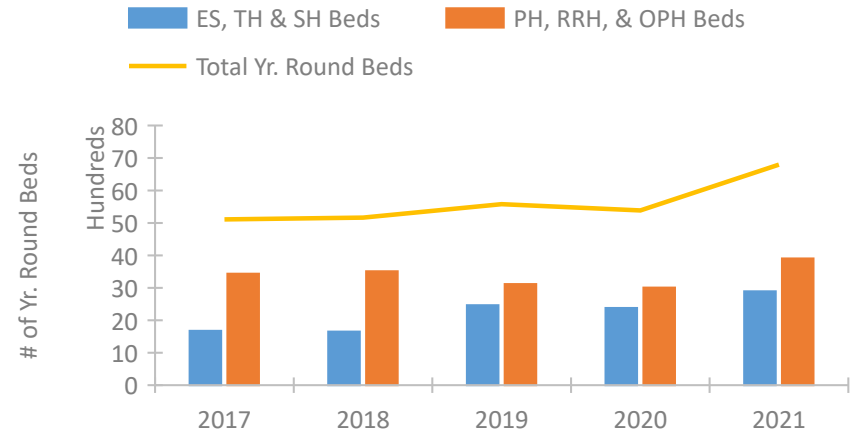


## New Mexico Continuum of Care Performance Profile

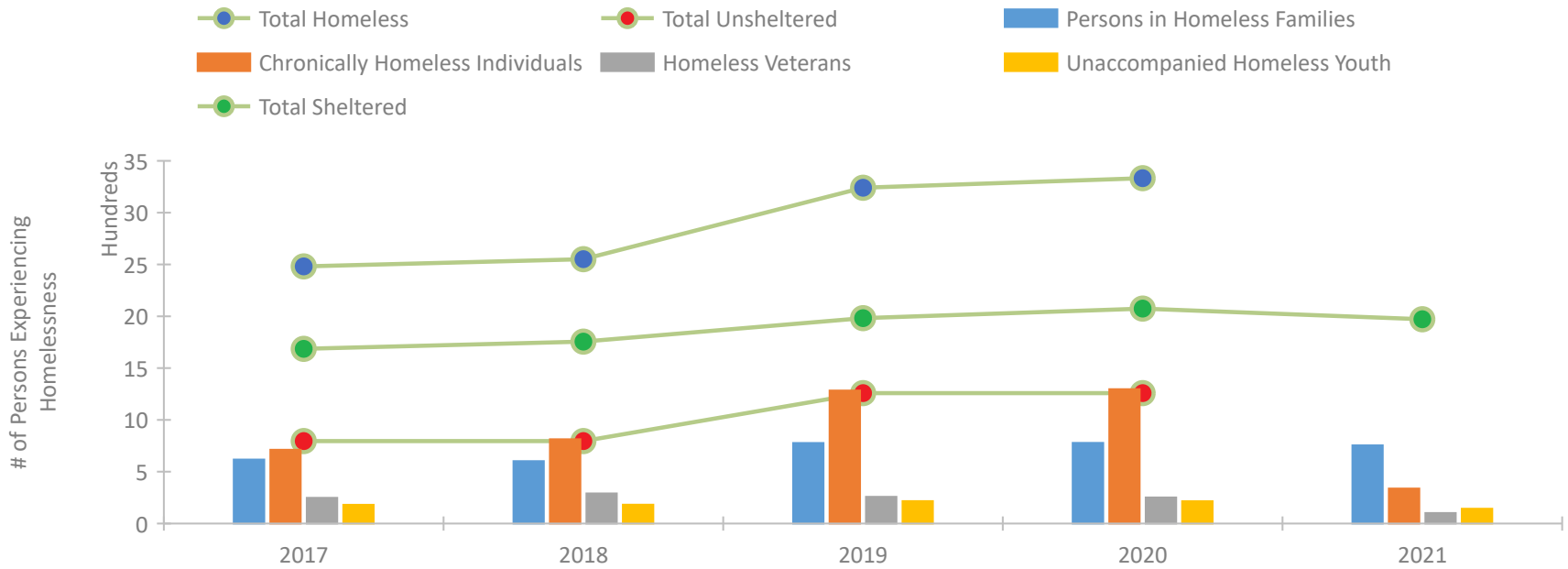


2021 CoC Boundaries 2020 CoC Boundaries

### Housing Inventory Count by Program Type



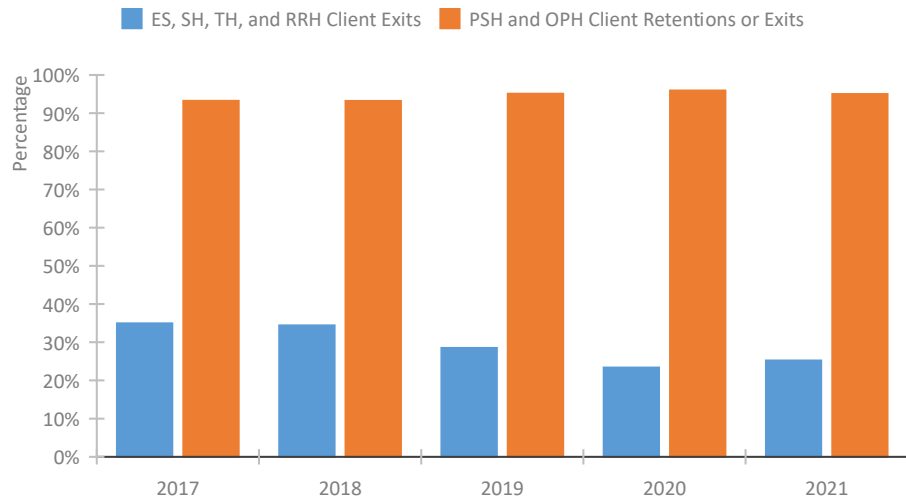
### Homeless Population – Point-in-Time (PIT) Count\*



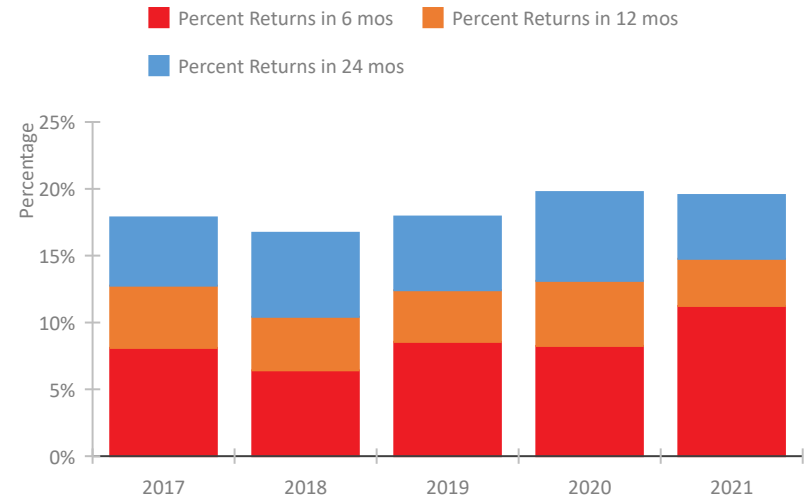
\*In 2021, HUD gave communities the option to cancel or modify the unsheltered survey portion of their counts based on the potential risk of COVID-19 transmission associated with conducting an in-person survey. As a result, HUD has excluded the unsheltered population sub-totals and all unsheltered sub-population data for this reporting period. The user is cautioned that the unsheltered and total homeless counts reported here may be missing data.

## New Mexico Continuum of Care Performance Profile

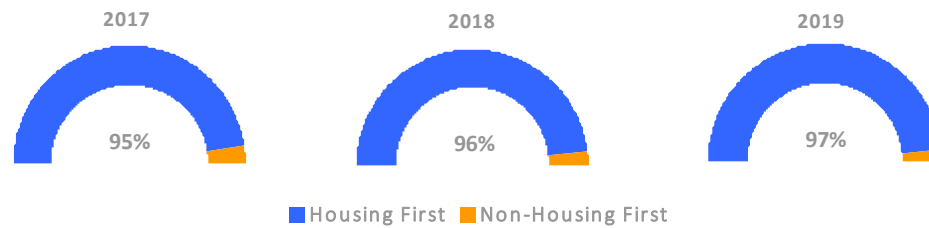
### Exits to Permanent Housing by Program Type



### Returns to Homelessness Over Time



### Proportion of Housing First Projects by Year†



Number of Projects by Year			
	2017	2018	2019
Housing First Projects	54	53	62
Non-Housing First Projects	3	2	2

†2021 Data unavailable at the time of report publication. In 2020 HUD awarded renewal projects noncompetitively, therefore no new data was collected and Housing First data remains the same from 2019 to 2020.

## Data Summary: New Mexico

### Point-In-Time Count Summary\*

	2017	2018	2019	2020	2021	2020-21 Change	% Change
Number of Sheltered Persons in Families	539	524	708	709	755	46	6%
Number of Unsheltered Persons in Families	78	78	69	69	0	-69	-100%
Number of Sheltered Individuals	1,147	1,231	1,274	1,365	1,217	-148	-11%
Number of Unsheltered Individuals	718	718	1,190	1,190	--	--	--
<b>Total Homeless Persons</b>	<b>2,482</b>	<b>2,551</b>	<b>3,241</b>	<b>3,333</b>	<b>1,972</b>	<b>-1,361</b>	<b>-41%</b>
Number of Sheltered Families	164	174	228	276	213	-63	-23%
Number of Unsheltered Families	27	27	18	18	--	--	--
<b>Number of Total Families</b>	<b>191</b>	<b>201</b>	<b>246</b>	<b>294</b>	<b>213</b>	<b>-81</b>	<b>-28%</b>
Sheltered Chronically Homeless Individuals	385	487	631	644	338	-306	-48%
Unsheltered Chronically Homeless Individuals	327	327	652	652	--	--	--
<b>Total Chronically Homeless Individuals</b>	<b>712</b>	<b>814</b>	<b>1,283</b>	<b>1,296</b>	<b>338</b>	<b>-958</b>	<b>-74%</b>
Sheltered Veterans	135	177	119	114	101	-13	-11%
Unsheltered Veterans	113	113	138	138	--	--	--
<b>Total Veterans</b>	<b>248</b>	<b>290</b>	<b>257</b>	<b>252</b>	<b>101</b>	<b>-151</b>	<b>-60%</b>
Sheltered Unaccompanied Youth (up to 24)	138	139	126	125	143	18	14%
Unsheltered Unaccompanied Youth (up to 24)	43	43	90	90	--	--	--
<b>Total Unaccompanied Youth (up to 24)</b>	<b>181</b>	<b>182</b>	<b>216</b>	<b>215</b>	<b>143</b>	<b>-72</b>	<b>-33%</b>

### System Performance Measures Summary

	2017	2018	2019	2020	2021	2020-21 Change	% Change
Rate People Return to Homelessness in 6 Months	8.1%	6.4%	8.6%	8.3%	11.2%	3%	N/A
Number of People who are Homeless for the First Time	4,632	4,107	5,329	4,390	4,632	242	5.5%
Rate People Exit from ES, SH, TH, and RRH to PH	35.0%	34.4%	28.5%	23.4%	25.2%	1.8%	N/A
Rate People in PSH and OPH Retain or Exit to PH	93.2%	93.2%	95.1%	95.9%	95.0%	-0.9%	N/A

### Housing Inventory Count Summary

	2017	2018	2019	2020	2021	2020-21 Change	% Change
Emergency Shelter (ES)	1,112	1,111	1,950	1,718	2,142	424	25%
Transitional Housing (TH)	562	540	515	661	749	88	13%
Permanent Supportive Housing (PSH)	2,634	2,545	2,209	2,070	2,598	528	26%
Rapid Re-Housing (RRH)	800	842	809	820	1,191	371	45%
Other Permanent Housing (OPH)	--	124	96	116	116	0	0%

### Award Summary

	2017	2018	2019	2020	2021	2020-21 Change	% Change
<b>Continuum of Care (CoC)</b>	\$10,728,359	\$11,187,659	\$11,025,488	\$13,153,200	\$14,189,136	\$1,035,936	8%
<b>Emergency Solutions Grants (ESG)</b>	\$1,472,891	\$1,479,745	\$1,527,450	\$1,596,362	\$1,592,581	(\$3,781)	0%
<b>Youth Homelessness Demonstration Program (YHDP)</b>	\$3,371,665	--	--	--	--	--	--

\*In 2021, HUD gave communities the option to cancel or modify the unsheltered survey portion of their counts based on the potential risk of COVID-19 transmission associated with conducting an in-person survey. As a result, HUD has excluded the unsheltered population sub-totals and all unsheltered sub-population data for this reporting period. The user is cautioned that the unsheltered and total homeless counts reported here may be missing data.