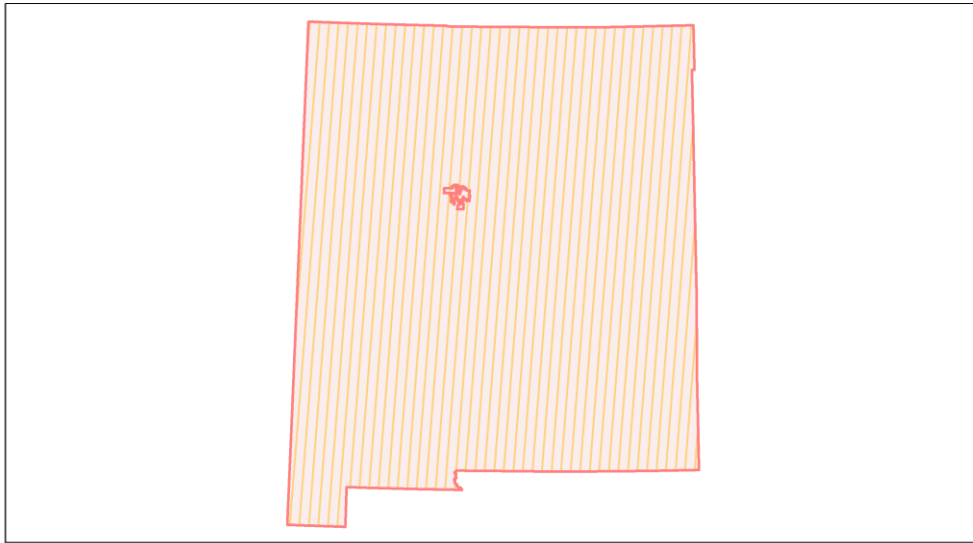
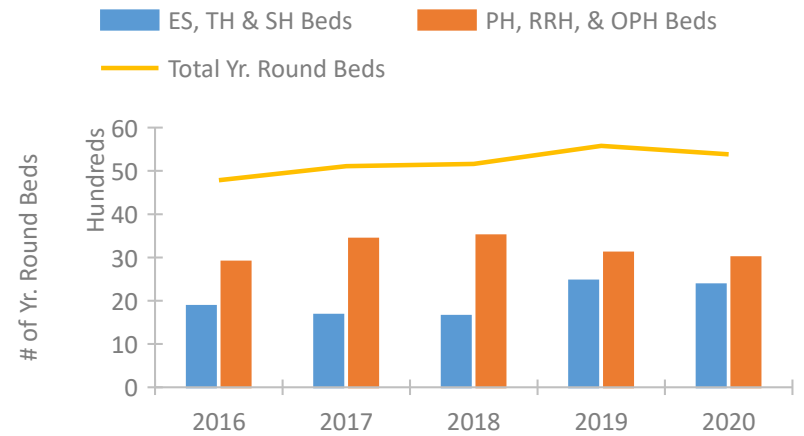


New Mexico Continuum of Care Performance Profile

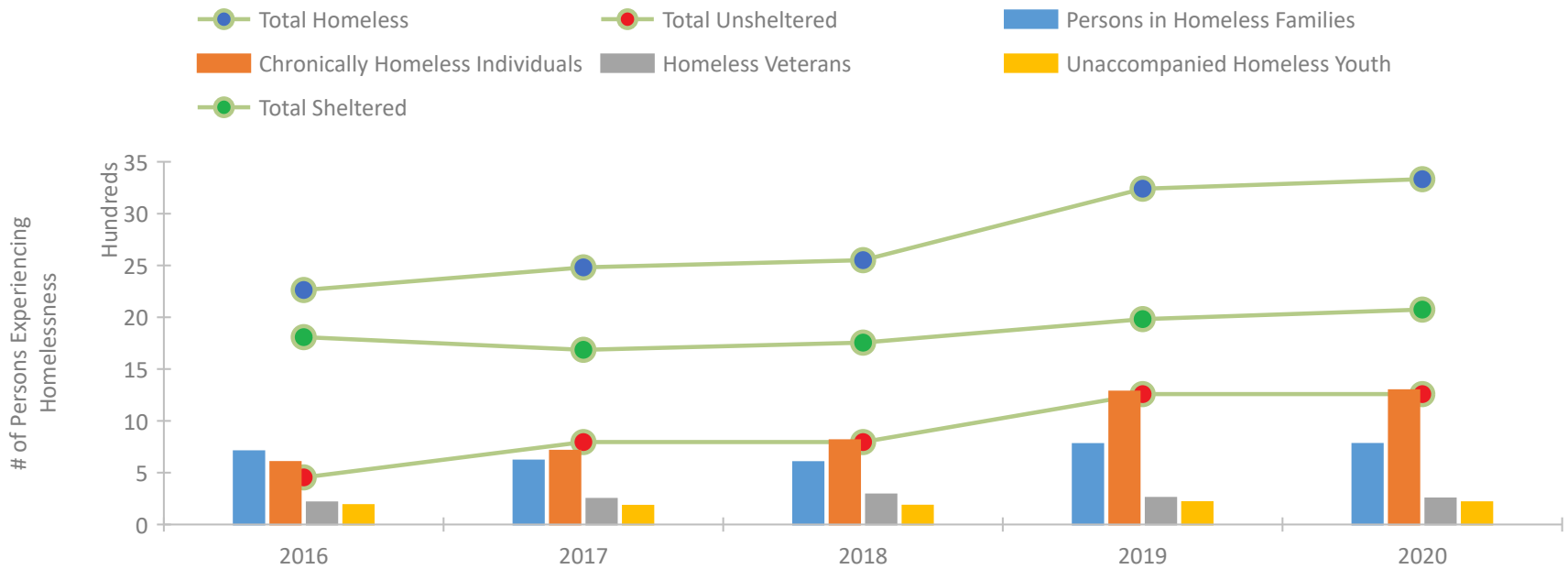


2020 CoC Boundaries 2019 CoC Boundaries

Housing Inventory Count by Program Type

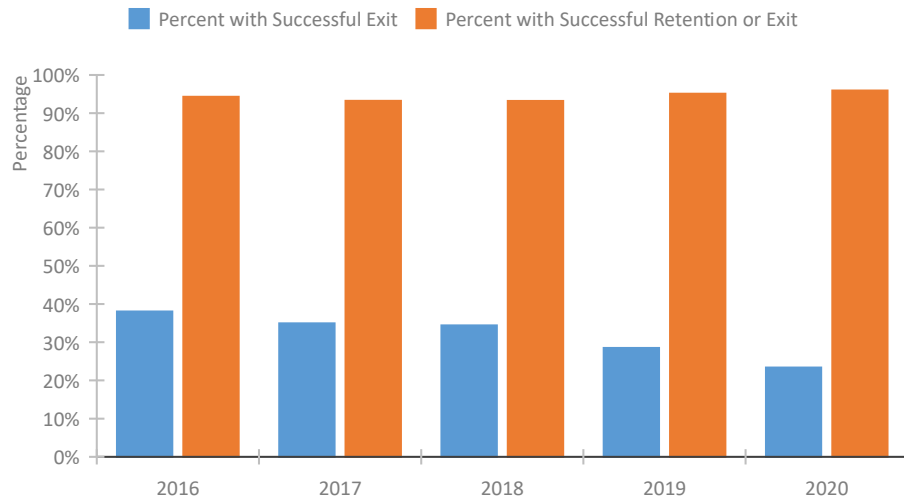


Homeless Population – Point-in-Time (PIT) Count

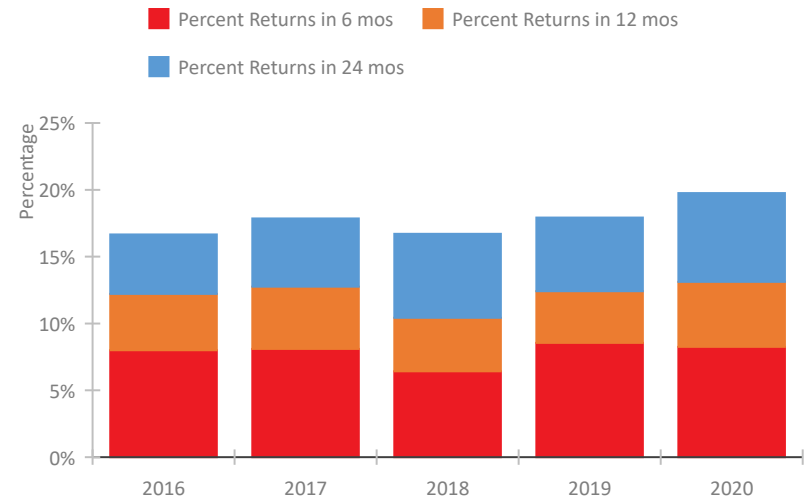


New Mexico Continuum of Care Performance Profile

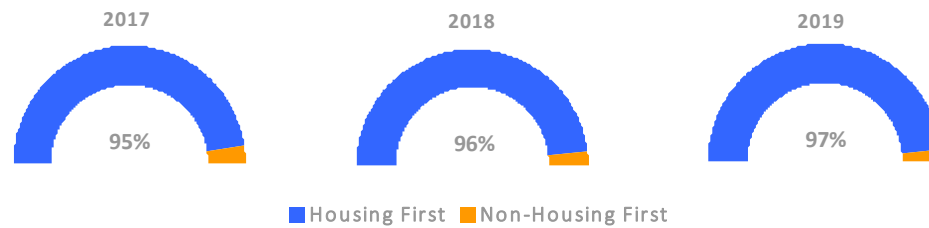
Exits to Permanent Housing by Program Type



Returns to Homelessness Over Time



Proportion of Housing First Projects by Year*



Number of Projects by Year			
	2017	2018	2019
Housing First Projects	54	53	62
Non-Housing First Projects	3	2	2

*In 2020 HUD awarded renewal projects noncompetitively, therefore no new data was collected and Housing First data remains the same from 2019 to 2020.

Data Summary: New Mexico

Point-In-Time Count Summary

	2016	2017	2018	2019	2020	2019-20 Change	% Change
Number of Sheltered Persons in Families	682	539	524	708	709	1	0%
Number of Unsheltered Persons in Families	25	78	78	69	69	0	-0%
Number of Sheltered Individuals	1,127	1,147	1,231	1,274	1,365	91	7%
Number of Unsheltered Individuals	429	718	718	1,190	1,190	0	-0%
Total Homeless Persons	2,263	2,482	2,551	3,241	3,333	92	3%
Number of Sheltered Families	223	164	174	228	276	48	21%
Number of Unsheltered Families	6	27	27	18	18	0	-0%
Number of Total Families	229	191	201	246	294	48	20%
Sheltered Chronically Homeless Individuals	342	385	487	631	644	13	2%
Unsheltered Chronically Homeless Individuals	261	327	327	652	652	0	-0%
Total Chronically Homeless Individuals	603	712	814	1,283	1,296	13	1%
Sheltered Veterans	150	135	177	119	114	-5	-4%
Unsheltered Veterans	64	113	113	138	138	0	-0%
Total Veterans	214	248	290	257	252	-5	-2%
Sheltered Unaccompanied Youth (up to 24)	163	138	139	126	125	-1	-1%
Unsheltered Unaccompanied Youth (up to 24)	25	43	43	90	90	0	-0%
Total Unaccompanied Youth (up to 24)	188	181	182	216	215	-1	-0%

System Performance Measures Summary

	2016	2017	2018	2019	2020	2019-20 Change	% Change
Rate People Return to Homelessness in 6 Months	8.0%	8.1%	6.4%	8.6%	8.3%	-0.3%	N/A
Number of People who are Homeless for the First Time	4,482	4,632	4,107	5,329	4,390	-939	-17.6%
Rate People Exit from ES, SH, TH, and RRH to PH	38.1%	35.0%	34.4%	28.5%	23.4%	-5.1%	N/A
Rate People in PSH and OPH Retain or Exit to PH	94.3%	93.2%	93.2%	95.1%	95.9%	0.8%	N/A

Housing Inventory Count Summary

	2016	2017	2018	2019	2020	2019-20 Change	% Change
Emergency Shelter (ES)	1,087	1,112	1,111	1,950	1,718	-232	-12%
Transitional Housing (TH)	793	562	540	515	661	146	28%
Permanent Supportive Housing (PSH)	2,388	2,634	2,545	2,209	2,070	-139	-6%
Rapid Re-Housing (RRH)	508	800	842	809	820	11	1%
Other Permanent Housing (OPH)	8	--	124	96	116	20	21%

Award Summary

	2016	2017	2018	2019	2020	2019-20 Change	% Change
Continuum of Care (CoC)	\$10,758,013	\$10,728,359	\$11,187,659	\$11,025,488	\$13,153,200	\$2,127,712	19%
Emergency Solutions Grants (ESG)	\$1,452,615	\$1,472,891	\$1,479,745	\$1,527,450	\$1,596,362	\$68,912	5%
Youth Homelessness Demonstration Program (YHDP)	--	\$3,371,665	--	--	--	--	--