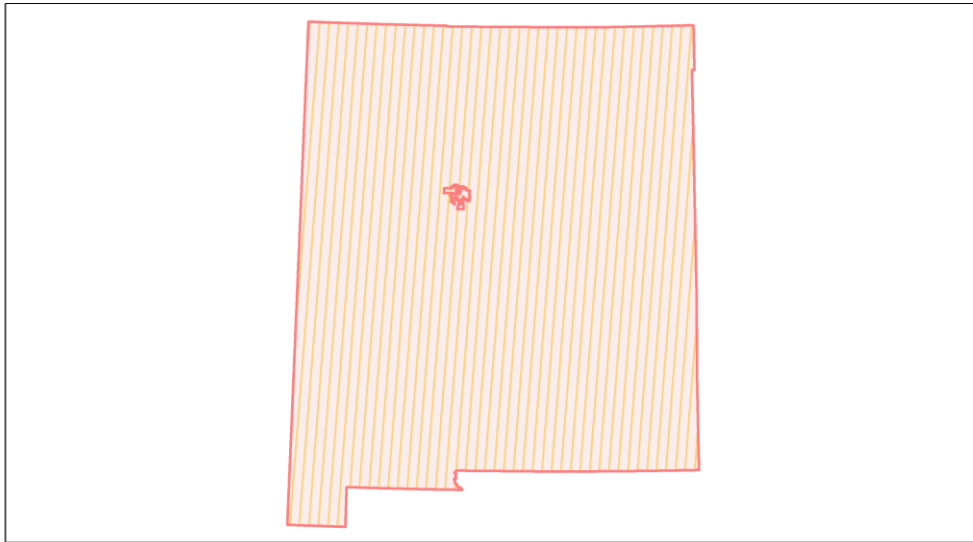
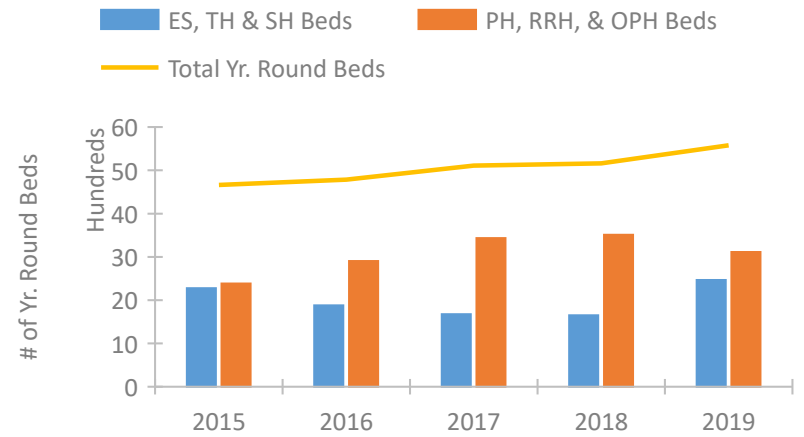


New Mexico Continuum of Care Performance Profile

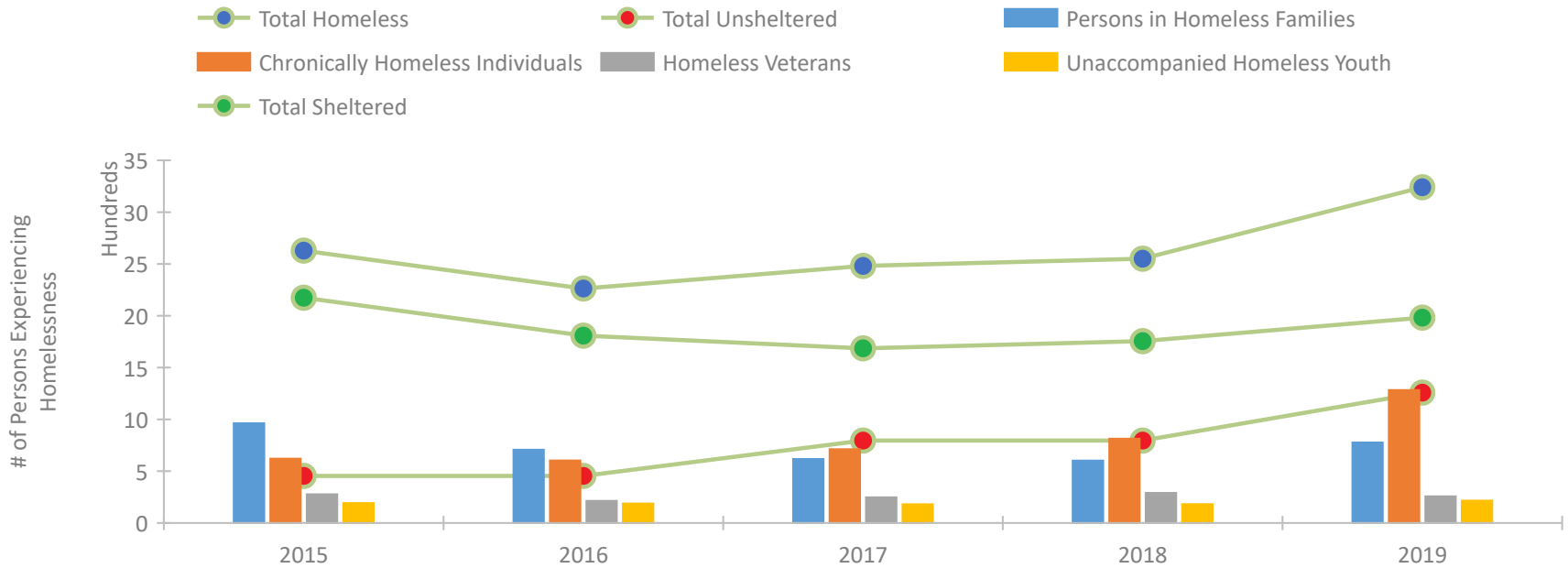


2019 CoC Boundaries 2018 CoC Boundaries

Housing Inventory Count by Program Type

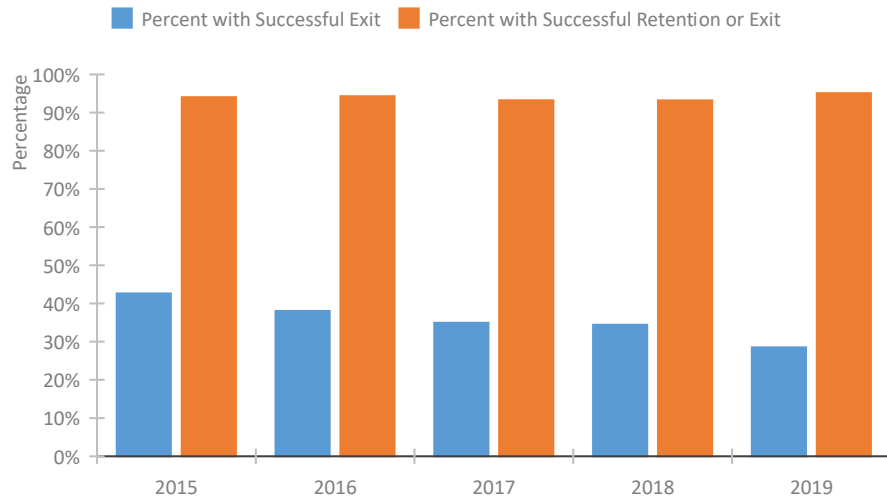


Homeless Population – Point-in-Time (PIT) Count

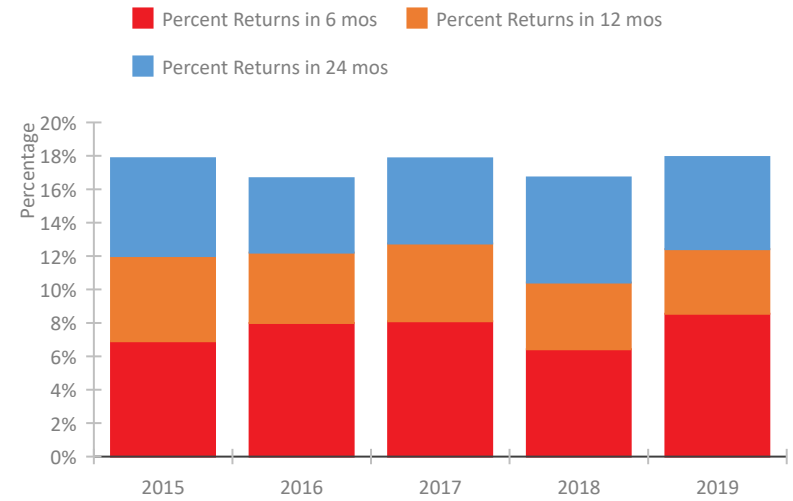


New Mexico Continuum of Care Performance Profile

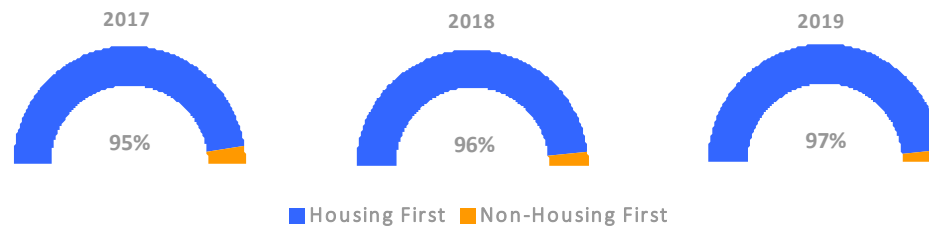
Exits to Permanent Housing by Program Type



Returns to Homelessness Over Time



Proportion of Housing First Projects by Year



Number of Projects by Year			
	2017	2018	2019
Housing First Projects	54	53	62
Non-Housing First Projects	3	2	2

Data Summary: New Mexico

Point-In-Time Count Summary

	2015	2016	2017	2018	2019	2018-19 Change	% Change
Number of Sheltered Persons in Families	938	682	539	524	708	184	35%
Number of Unsheltered Persons in Families	25	25	78	78	69	-9	-12%
Number of Sheltered Individuals	1,237	1,127	1,147	1,231	1,274	43	3%
Number of Unsheltered Individuals	429	429	718	718	1,190	472	66%
Total Homeless Persons	2,629	2,263	2,482	2,551	3,241	690	27%
Number of Sheltered Families	290	223	164	174	228	54	31%
Number of Unsheltered Families	6	6	27	27	18	-9	-33%
Number of Total Families	296	229	191	201	246	45	22%
Sheltered Chronically Homeless Individuals	360	342	385	487	631	144	30%
Unsheltered Chronically Homeless Individuals	261	261	327	327	652	325	99%
Total Chronically Homeless Individuals	621	603	712	814	1,283	469	58%
Sheltered Veterans	214	150	135	177	119	-58	-33%
Unsheltered Veterans	64	64	113	113	138	25	22%
Total Veterans	278	214	248	290	257	-33	-11%
Sheltered Unaccompanied Youth (up to 24)	168	163	138	139	126	-13	-9%
Unsheltered Unaccompanied Youth (up to 24)	25	25	43	43	90	47	109%
Total Unaccompanied Youth (up to 24)	193	188	181	182	216	34	19%

System Performance Measures Summary

	2015	2016	2017	2018	2019	2018-19 Change	% Change
Rate People Return to Homelessness in 6 Months	6.9%	8.0%	8.1%	6.4%	8.6%	2.1%	N/A
Number of People who are Homeless for the First Time	4,763	4,482	4,632	4,107	5,329	1,222	29.8%
Rate People Exit from ES, SH, TH, and RRH to PH	42.6%	38.1%	35.0%	34.4%	28.5%	-5.9%	N/A
Rate People in PSH and OPH Retain or Exit to PH	94.0%	94.3%	93.2%	93.2%	95.1%	1.9%	N/A

Housing Inventory Count Summary

	2015	2016	2017	2018	2019	2018-19 Change	% Change
Emergency Shelter (ES)	1,265	1,087	1,112	1,111	1,950	839	76%
Transitional Housing (TH)	1,012	793	562	540	515	-25	-5%
Permanent Supportive Housing (PSH)	2,049	2,388	2,634	2,545	2,209	-336	-13%
Rapid Re-Housing (RRH)	336	508	800	842	809	-33	-4%
Other Permanent Housing (OPH)	--	8	--	124	96	-28	-23%

Award Summary

	2015	2016	2017	2018	2019	2018-19 Change	% Change
Continuum of Care (CoC)	\$10,292,957	\$10,758,013	\$10,728,359	\$11,187,659	\$11,025,488	(\$162,171)	-1%
Emergency Solutions Grants (ESG)	\$1,338,804	\$1,452,615	\$1,472,891	\$1,479,745	\$1,527,450	\$47,705	3%
Youth Homelessness Demonstration Program (YHDP)	N/A	--	\$3,371,665	--	--	--	--