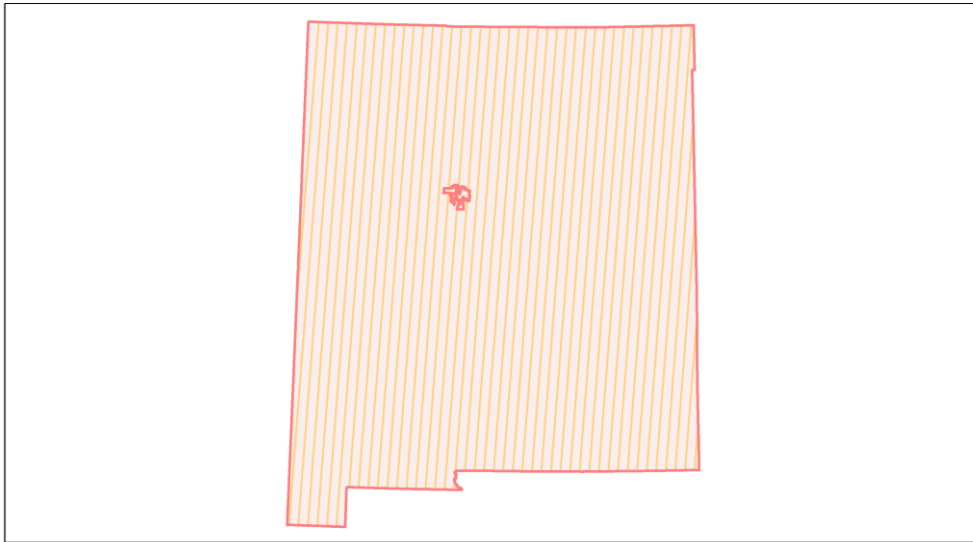
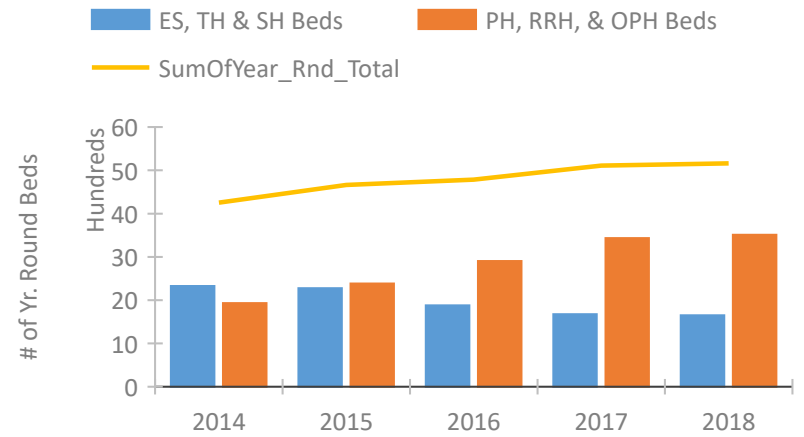


## New Mexico Continuum of Care Performance Profile

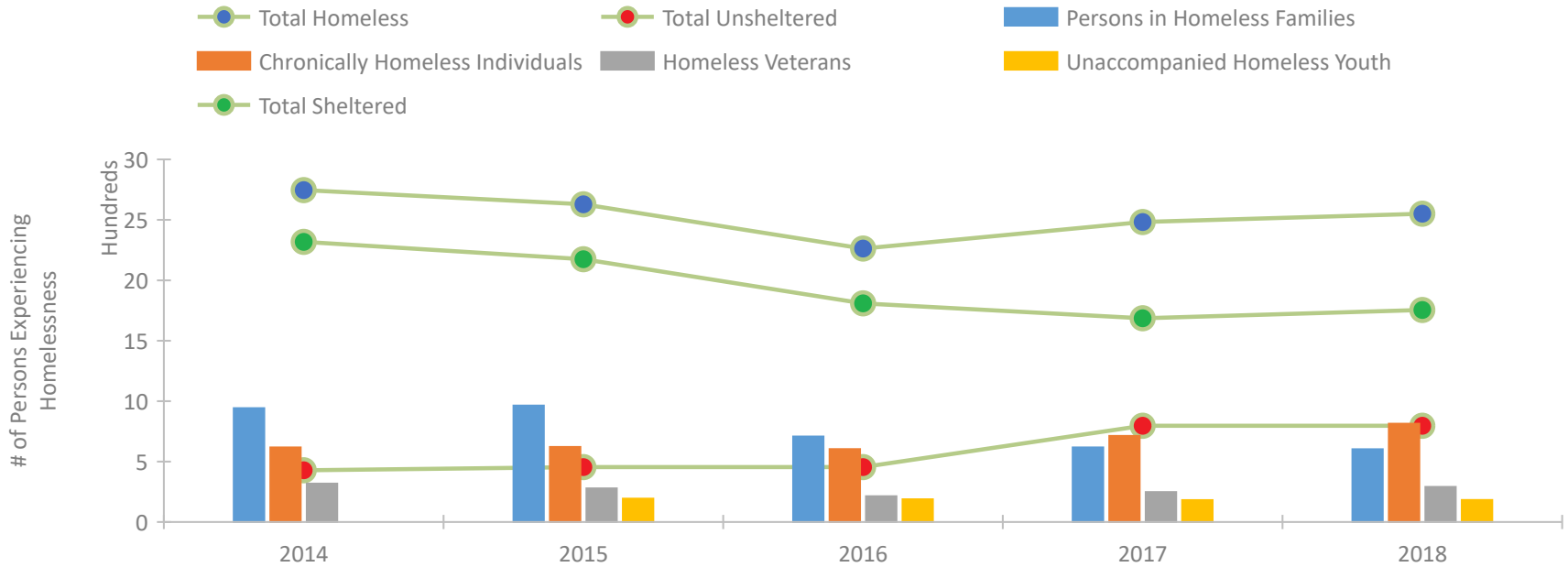


2018 CoC Boundaries 2017 CoC Boundaries

### Housing Inventory Count by Program Type

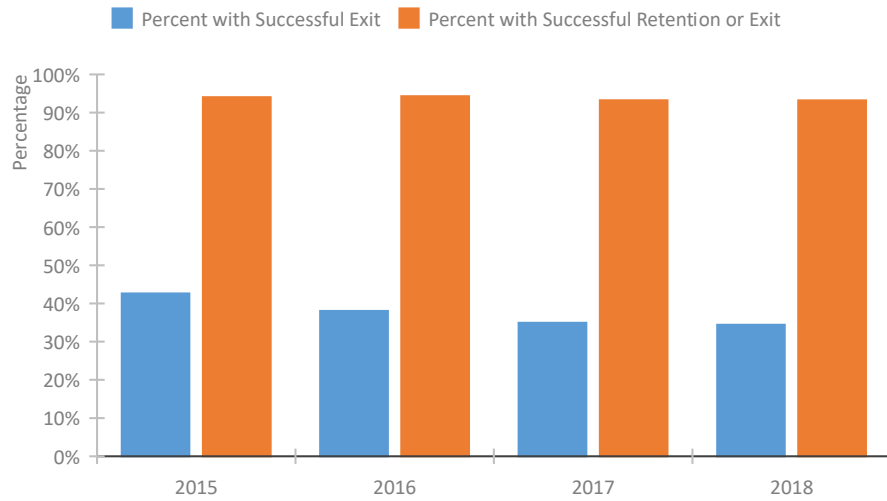


### Homeless Population – Point-in-Time (PIT) Count

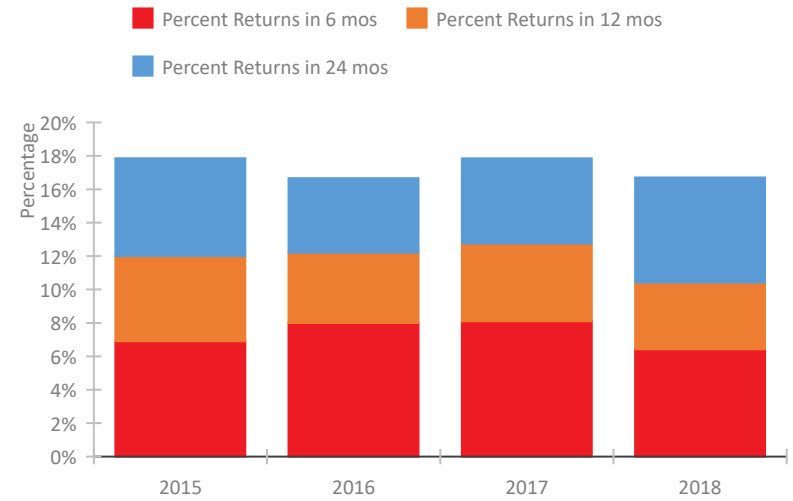


## New Mexico Continuum of Care Performance Profile

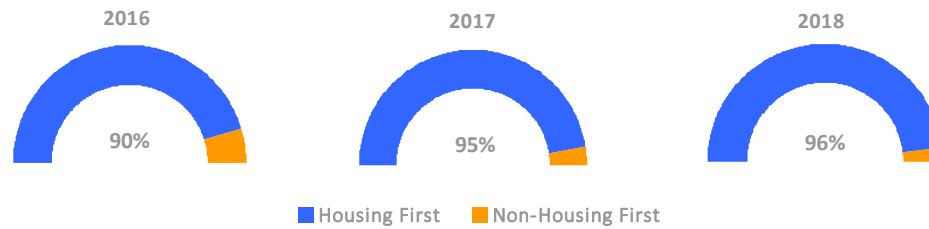
### Exits to Permanent Housing by Program Type



### Returns to Homelessness Over Time



### Proportion of Housing First Projects by Year



### Number of Projects by Year

	2016	2017	2018
Housing First Projects	56	54	53
Non-Housing First Projects	6	3	2

## Data Summary: New Mexico

### Point-In-Time Count Summary

	2014	2015	2016	2017	2018	2017-18 Change	% Change
Number of Sheltered Persons in Families	889	938	682	539	524	-15	-3%
Number of Unsheltered Persons in Families	53	25	25	78	78	0	0%
Number of Sheltered Individuals	1,298	1,165	1,050	1,062	1,159	97	9%
Number of Unsheltered Individuals	355	429	429	717	717	0	0%
<b>Total Homeless Persons</b>	<b>2,595</b>	<b>2,557</b>	<b>2,186</b>	<b>2,396</b>	<b>2,478</b>	<b>82</b>	<b>3%</b>
Number of Sheltered Families	287	290	223	164	174	10	6%
Number of Unsheltered Families	19	6	6	27	27	0	0%
<b>Number of Total Families</b>	<b>306</b>	<b>296</b>	<b>229</b>	<b>191</b>	<b>201</b>	<b>10</b>	<b>5%</b>
Sheltered Chronically Homeless Individuals	458	360	342	385	487	102	26%
Unsheltered Chronically Homeless Individuals	159	261	261	327	327	0	0%
<b>Total Chronically Homeless Individuals</b>	<b>617</b>	<b>621</b>	<b>603</b>	<b>712</b>	<b>814</b>	<b>102</b>	<b>14%</b>
Sheltered Veterans	258	214	150	135	177	42	31%
Unsheltered Veterans	60	64	64	113	113	0	0%
<b>Total Veterans</b>	<b>318</b>	<b>278</b>	<b>214</b>	<b>248</b>	<b>290</b>	<b>42</b>	<b>17%</b>
Sheltered Unaccompanied Youth (up to 24)	--	168	163	138	139	1	1%
Unsheltered Unaccompanied Youth (up to 24)	--	25	25	43	43	0	0%
<b>Total Unaccompanied Youth (up to 24)</b>	<b>--</b>	<b>193</b>	<b>188</b>	<b>181</b>	<b>182</b>	<b>1</b>	<b>1%</b>

### System Performance Measures Summary

	2014	2015	2016	2017	2018	2017-18 Change	% Change
Rate People Return to Homelessness in 6 Months	N/A	6.9%	8.0%	8.1%	6.4%	-1.7%	N/A
Number of People who are Homeless for the First Time	N/A	4,763	4,482	4,632	4,107	-525	-11.3%
Rate People Exit from ES, SH, TH, and RRH to PH	N/A	42.6%	38.1%	35.0%	34.4%	-0.5%	N/A
Rate People in PSH and OPH Retain or Exit to PH	N/A	94.0%	94.3%	93.2%	93.2%	0%	N/A

### Housing Inventory Count Summary

	2014	2015	2016	2017	2018	2017-18 Change	% Change
Emergency Shelter (ES)	1,375	1,265	1,087	1,112	1,111	-1	0%
Transitional Housing (TH)	950	1,012	793	562	540	-22	-4%
Permanent Supportive Housing (PSH)	1,771	2,049	2,388	2,634	2,545	-89	-3%
Rapid Re-Housing (RRH)	159	336	508	800	842	42	5%
Other Permanent Housing (OPH)	--	--	8	--	124	--	--

### Award Summary

	2014	2015	2016	2017	2018	2017-18 Change	% Change
<b>Continuum of Care (CoC)</b>	\$9,324,895	\$10,292,957	\$10,758,013	\$10,728,359	\$11,187,659	\$459,300	4%
<b>Emergency Solutions Grants (ESG)</b>	\$1,216,024	\$1,338,804	\$1,452,615	\$1,472,891	\$1,479,745	\$6,854	0%
<b>Youth Homelessness Demonstration Program (YHDP)</b>	N/A	N/A	--	\$3,371,665	--	--	--