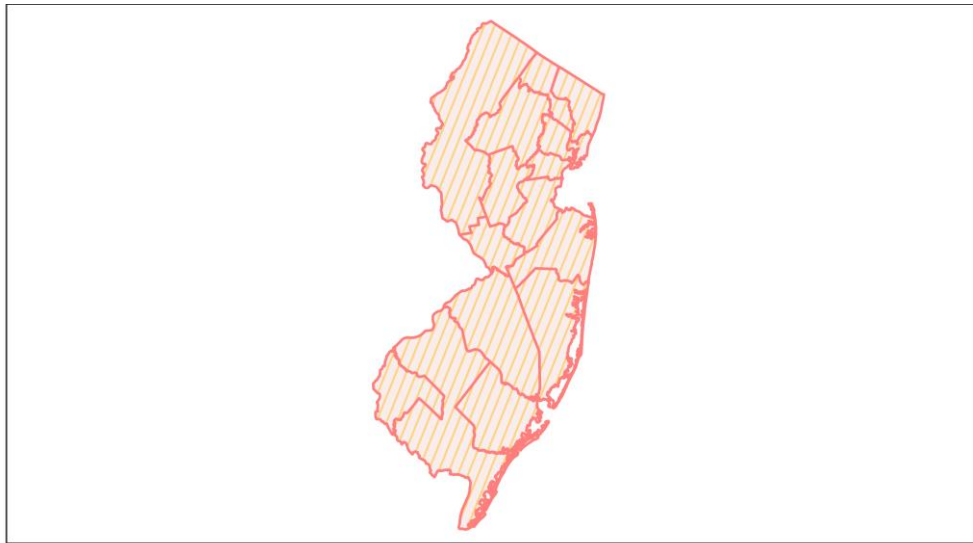
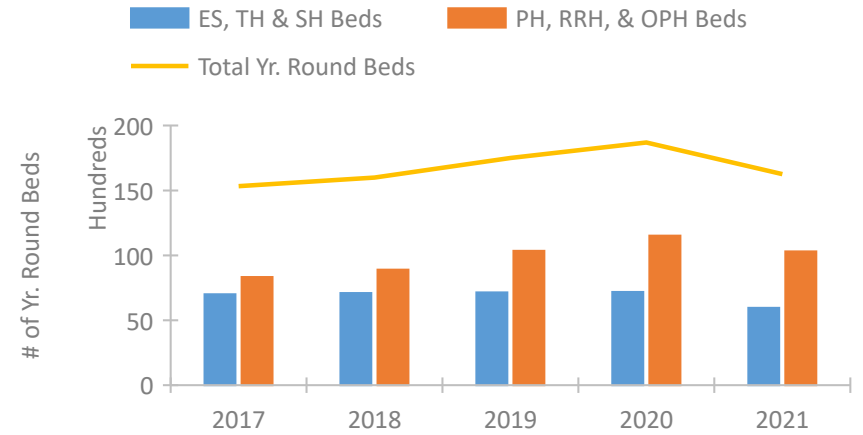


New Jersey Continuum of Care Performance Profile

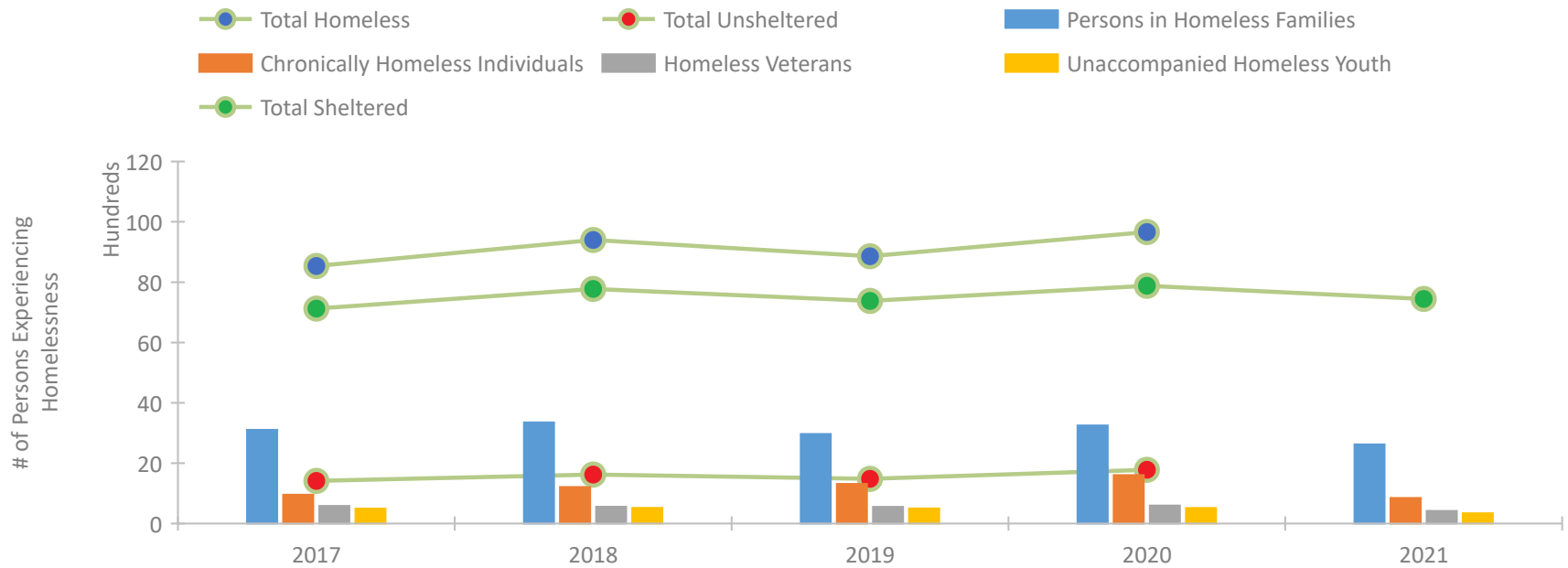


2021 CoC Boundaries / 2020 CoC Boundaries

Housing Inventory Count by Program Type



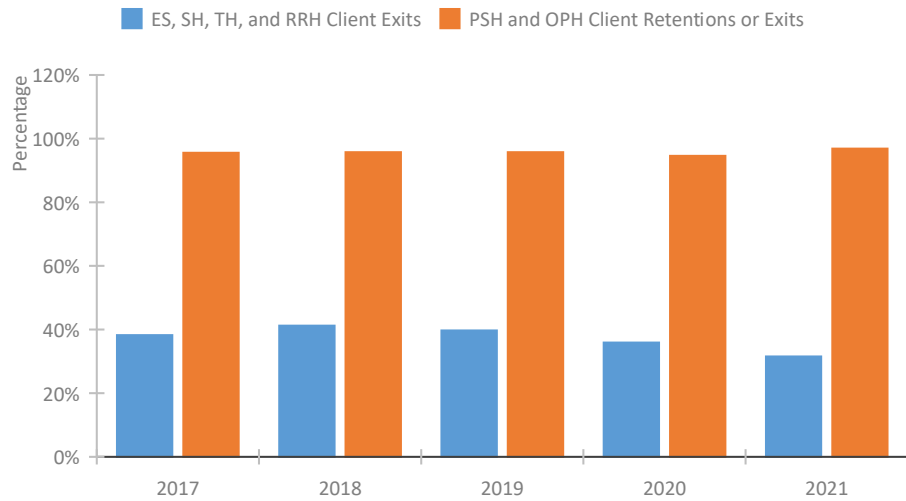
Homeless Population – Point-in-Time (PIT) Count*



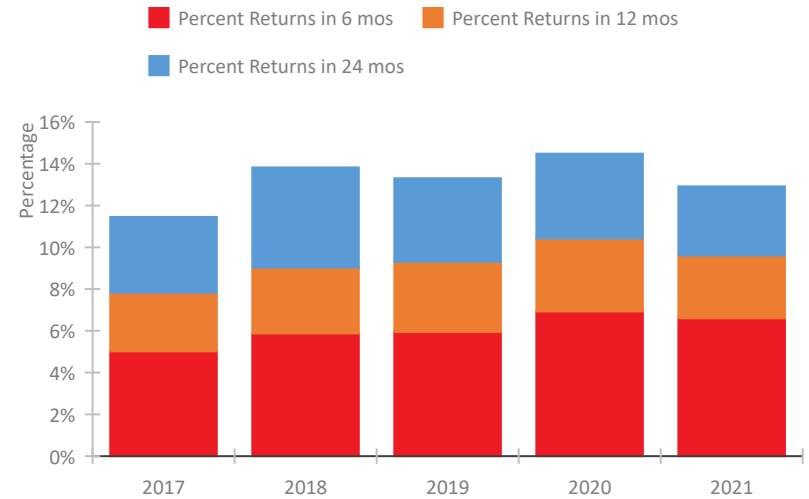
*In 2021, HUD gave communities the option to cancel or modify the unsheltered survey portion of their counts based on the potential risk of COVID-19 transmission associated with conducting an in-person survey. As a result, HUD has excluded the unsheltered population sub-totals and all unsheltered sub-population data for this reporting period. The user is cautioned that the unsheltered and total homeless counts reported here may be missing data.

New Jersey Continuum of Care Performance Profile

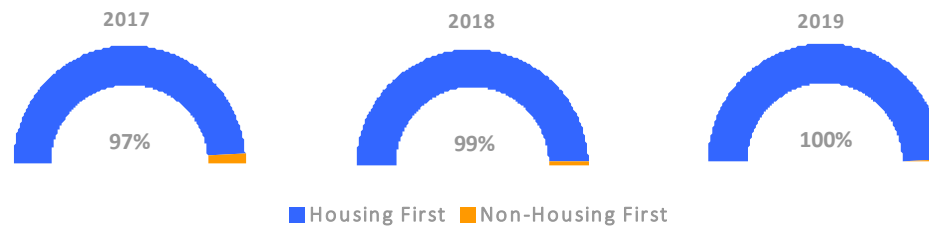
Exits to Permanent Housing by Program Type



Returns to Homelessness Over Time



Proportion of Housing First Projects by Year†



Number of Projects by Year

	2017	2018	2019
Housing First Projects	269	241	228
Non-Housing First Projects	7	3	1

†2021 Data unavailable at the time of report publication. In 2020 HUD awarded renewal projects noncompetitively, therefore no new data was collected and Housing First data remains the same from 2019 to 2020.

Data Summary: New Jersey

Point-In-Time Count Summary*

	2017	2018	2019	2020	2021	2020-21 Change	% Change
Number of Sheltered Persons in Families	3,084	3,305	2,942	3,189	2,622	-567	-18%
Number of Unsheltered Persons in Families	19	45	25	60	0	-60	-100%
Number of Sheltered Individuals	4,038	4,470	4,438	4,692	4,821	129	3%
Number of Unsheltered Individuals	1,395	1,578	1,457	1,721	--	--	--
Total Homeless Persons	8,536	9,398	8,862	9,662	7,443	-2,219	-23%
Number of Sheltered Families	1,011	1,080	984	1,057	893	-164	-16%
Number of Unsheltered Families	7	13	9	24	--	--	--
Number of Total Families	1,018	1,093	993	1,081	893	-188	-17%
Sheltered Chronically Homeless Individuals	542	464	624	705	848	143	20%
Unsheltered Chronically Homeless Individuals	413	748	687	898	--	--	--
Total Chronically Homeless Individuals	955	1,212	1,311	1,603	848	-755	-47%
Sheltered Veterans	494	470	485	511	419	-92	-18%
Unsheltered Veterans	89	85	66	84	--	--	--
Total Veterans	583	555	551	595	419	-176	-30%
Sheltered Unaccompanied Youth (up to 24)	432	439	436	439	340	-99	-23%
Unsheltered Unaccompanied Youth (up to 24)	60	79	60	75	--	--	--
Total Unaccompanied Youth (up to 24)	492	518	496	514	340	-174	-34%

System Performance Measures Summary

	2017	2018	2019	2020	2021	2020-21 Change	% Change
Rate People Return to Homelessness in 6 Months	5.0%	5.9%	5.9%	6.9%	6.6%	-0.3%	N/A
Number of People who are Homeless for the First Time	22,707	23,142	21,892	15,850	13,009	-2,841	-17.9%
Rate People Exit from ES, SH, TH, and RRH to PH	38.2%	41.2%	39.7%	35.9%	31.5%	-4.4%	N/A
Rate People in PSH and OPH Retain or Exit to PH	95.6%	95.7%	95.7%	94.6%	96.8%	2.3%	N/A

Housing Inventory Count Summary

	2017	2018	2019	2020	2021	2020-21 Change	% Change
Emergency Shelter (ES)	4,766	4,624	4,677	4,817	3,933	-884	-18%
Safe Haven (SH)	20	20	47	20	10	-10	-50%
Transitional Housing (TH)	2,215	2,455	2,427	2,341	2,007	-334	-14%
Permanent Supportive Housing (PSH)	6,600	6,759	6,838	7,564	7,291	-273	-4%
Rapid Re-Housing (RRH)	1,438	1,695	3,030	3,208	2,214	-994	-31%
Other Permanent Housing (OPH)	296	443	481	748	803	55	7%

Award Summary

	2017	2018	2019	2020	2021	2020-21 Change	% Change
Continuum of Care (CoC)	\$45,899,952	\$48,017,236	\$48,342,583	\$52,486,276	\$53,927,313	\$1,441,037	3%
Emergency Solutions Grants (ESG)	\$7,785,159	\$7,118,334	\$7,402,553	\$7,685,138	\$7,787,114	\$101,976	1%

*In 2021, HUD gave communities the option to cancel or modify the unsheltered survey portion of their counts based on the potential risk of COVID-19 transmission associated with conducting an in-person survey. As a result, HUD has excluded the unsheltered population sub-totals and all unsheltered sub-population data for this reporting period. The user is cautioned that the unsheltered and total homeless counts reported here may be missing data.