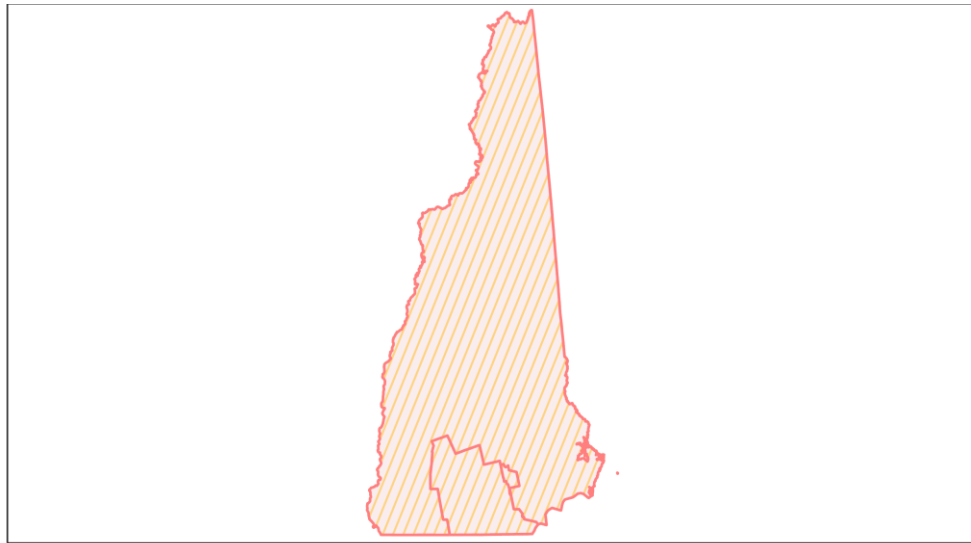
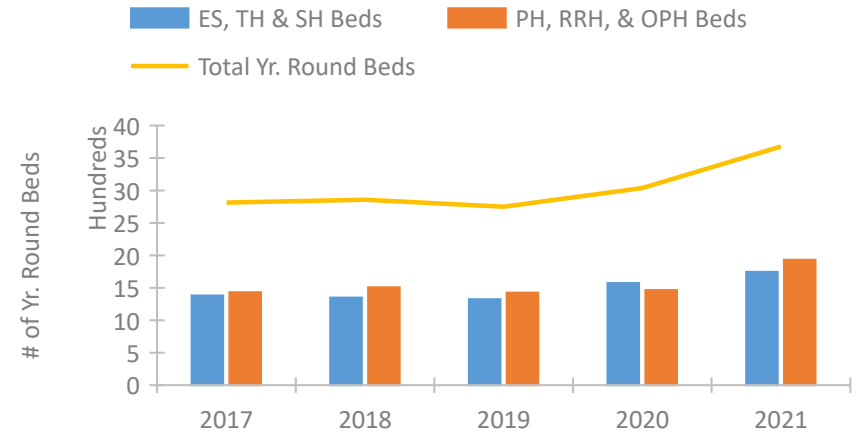


## New Hampshire Continuum of Care Performance Profile

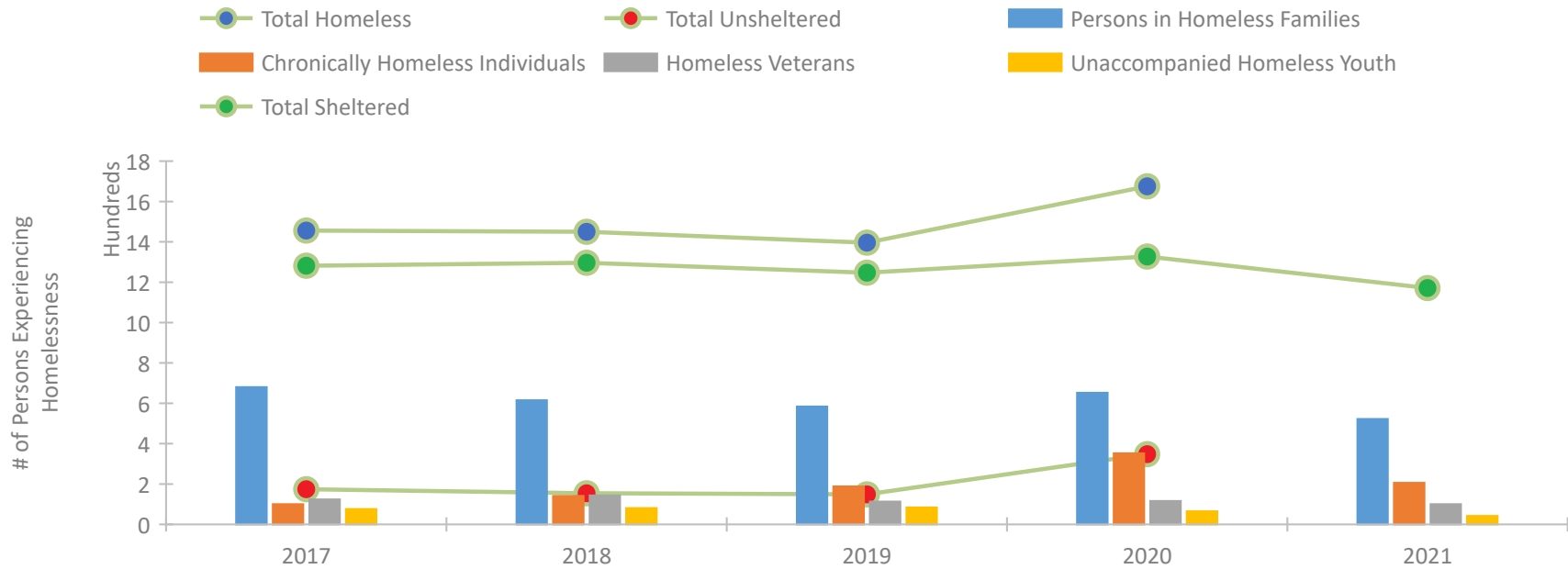


2021 CoC Boundaries 2020 CoC Boundaries

### Housing Inventory Count by Program Type



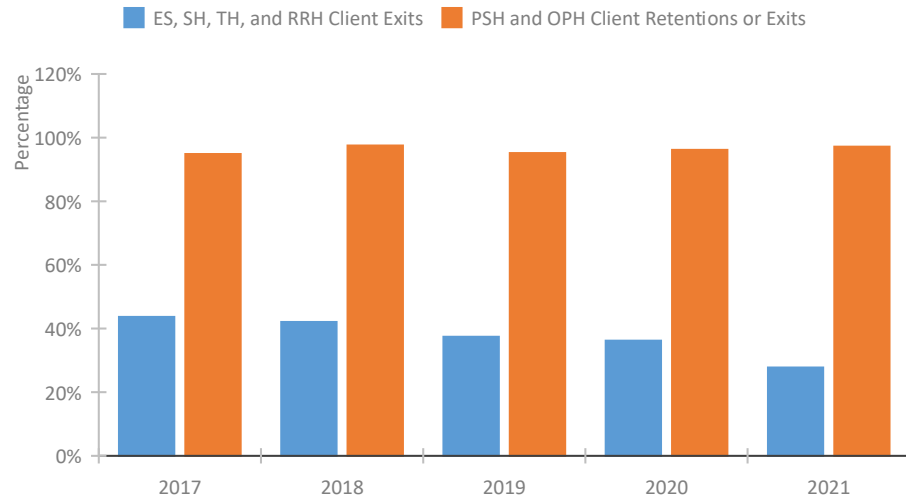
### Homeless Population – Point-in-Time (PIT) Count\*



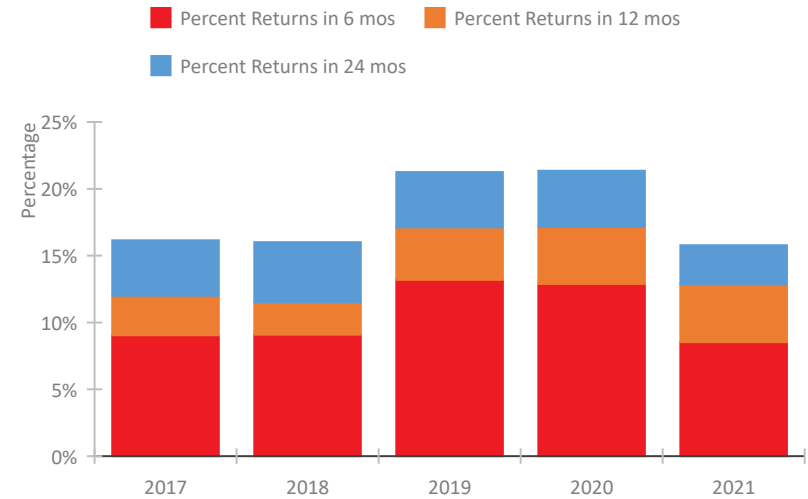
\*In 2021, HUD gave communities the option to cancel or modify the unsheltered survey portion of their counts based on the potential risk of COVID-19 transmission associated with conducting an in-person survey. As a result, HUD has excluded the unsheltered population sub-totals and all unsheltered sub-population data for this reporting period. The user is cautioned that the unsheltered and total homeless counts reported here may be missing data.

## New Hampshire Continuum of Care Performance Profile

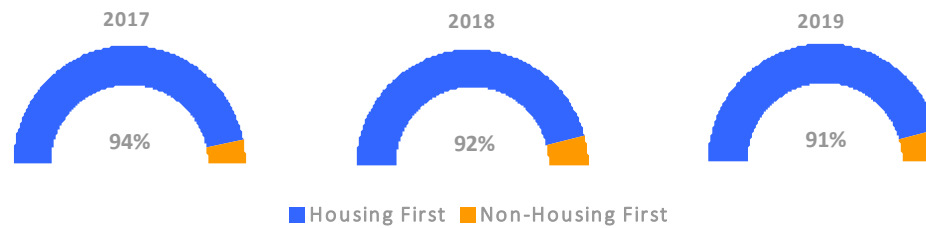
### Exits to Permanent Housing by Program Type



### Returns to Homelessness Over Time



### Proportion of Housing First Projects by Year†



### Number of Projects by Year

	2017	2018	2019
Housing First Projects	59	55	50
Non-Housing First Projects	4	5	5

†2021 Data unavailable at the time of report publication. In 2020 HUD awarded renewal projects noncompetitively, therefore no new data was collected and Housing First data remains the same from 2019 to 2020.

## Data Summary: New Hampshire

### Point-In-Time Count Summary\*

	2017	2018	2019	2020	2021	2020-21 Change	% Change
Number of Sheltered Persons in Families	644	603	580	624	522	-102	-16%
Number of Unsheltered Persons in Families	36	12	4	28	0	-28	-100%
Number of Sheltered Individuals	638	693	667	703	649	-54	-8%
Number of Unsheltered Individuals	138	142	145	320	--	--	--
<b>Total Homeless Persons</b>	<b>1,456</b>	<b>1,450</b>	<b>1,396</b>	<b>1,675</b>	<b>1,171</b>	<b>-504</b>	<b>-30%</b>
Number of Sheltered Families	221	210	204	209	181	-28	-13%
Number of Unsheltered Families	17	5	2	10	--	--	--
<b>Number of Total Families</b>	<b>238</b>	<b>215</b>	<b>206</b>	<b>219</b>	<b>181</b>	<b>-38</b>	<b>-17%</b>
Sheltered Chronically Homeless Individuals	38	85	126	178	206	28	16%
Unsheltered Chronically Homeless Individuals	62	56	62	174	--	--	--
<b>Total Chronically Homeless Individuals</b>	<b>100</b>	<b>141</b>	<b>188</b>	<b>352</b>	<b>206</b>	<b>-146</b>	<b>-41%</b>
Sheltered Veterans	113	136	106	101	100	-1	-1%
Unsheltered Veterans	11	7	7	15	--	--	--
<b>Total Veterans</b>	<b>124</b>	<b>143</b>	<b>113</b>	<b>116</b>	<b>100</b>	<b>-16</b>	<b>-14%</b>
Sheltered Unaccompanied Youth (up to 24)	62	60	62	45	42	-3	-7%
Unsheltered Unaccompanied Youth (up to 24)	14	21	22	20	--	--	--
<b>Total Unaccompanied Youth (up to 24)</b>	<b>76</b>	<b>81</b>	<b>84</b>	<b>65</b>	<b>42</b>	<b>-23</b>	<b>-35%</b>

### System Performance Measures Summary

	2017	2018	2019	2020	2021	2020-21 Change	% Change
Rate People Return to Homelessness in 6 Months	9.0%	9.1%	13.2%	12.9%	8.5%	-4.4%	N/A
Number of People who are Homeless for the First Time	4,060	3,408	3,422	2,269	2,645	376	16.6%
Rate People Exit from ES, SH, TH, and RRH to PH	43.6%	42.1%	37.4%	36.2%	27.8%	-8.4%	N/A
Rate People in PSH and OPH Retain or Exit to PH	94.8%	97.5%	95.1%	96.1%	97.1%	1%	N/A

### Housing Inventory Count Summary

	2017	2018	2019	2020	2021	2020-21 Change	% Change
Emergency Shelter (ES)	807	819	837	1,039	1,230	191	18%
Safe Haven (SH)	9	9	9	9	9	0	0%
Transitional Housing (TH)	567	521	479	526	508	-18	-3%
Permanent Supportive Housing (PSH)	1,125	1,114	1,131	1,105	1,260	155	14%
Rapid Re-Housing (RRH)	228	307	213	272	346	74	27%
Other Permanent Housing (OPH)	78	87	82	88	325	237	269%

### Award Summary

	2017	2018	2019	2020	2021	2020-21 Change	% Change
<b>Continuum of Care (CoC)</b>	\$7,253,904	\$7,674,344	\$8,074,105	\$8,427,680	\$9,467,458	\$1,039,778	12%
<b>Emergency Solutions Grants (ESG)</b>	\$1,016,342	\$1,020,856	\$1,056,854	\$1,087,489	\$1,085,512	(\$1,977)	0%
<b>Youth Homelessness Demonstration Program (YHDP)</b>	--	--	--	\$3,412,971	--	--	--

\*In 2021, HUD gave communities the option to cancel or modify the unsheltered survey portion of their counts based on the potential risk of COVID-19 transmission associated with conducting an in-person survey. As a result, HUD has excluded the unsheltered population sub-totals and all unsheltered sub-population data for this reporting period. The user is cautioned that the unsheltered and total homeless counts reported here may be missing data.