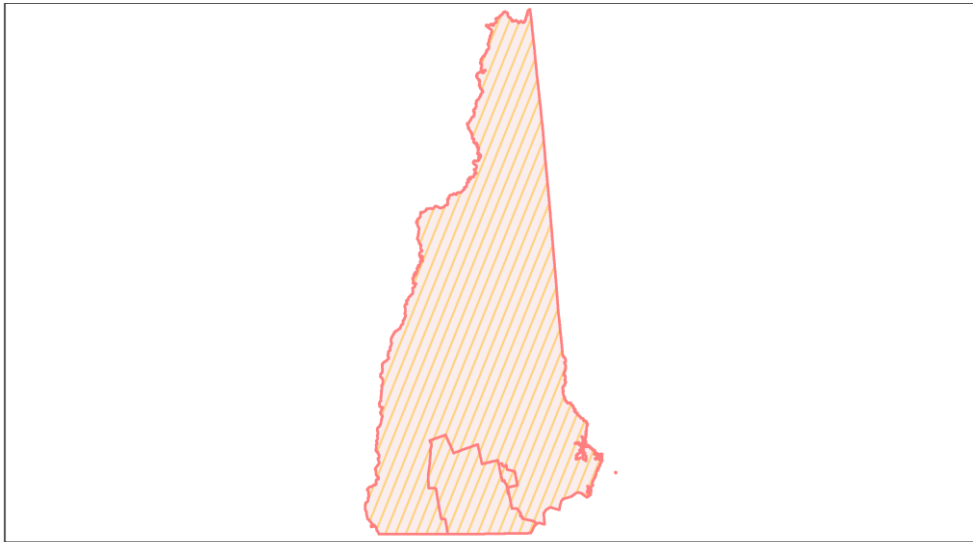
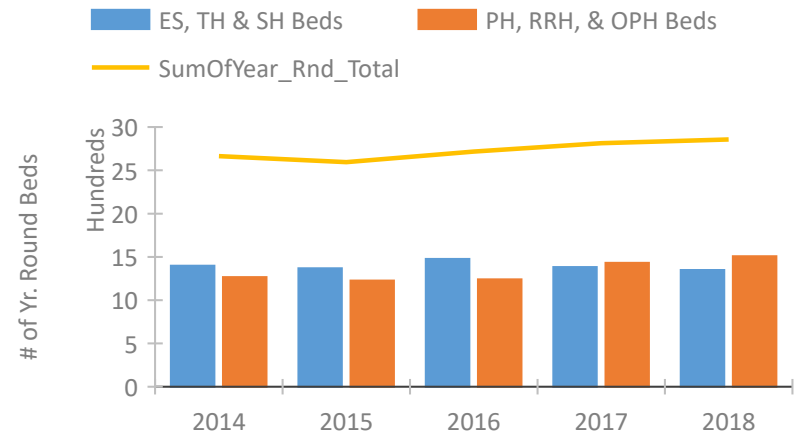


New Hampshire Continuum of Care Performance Profile

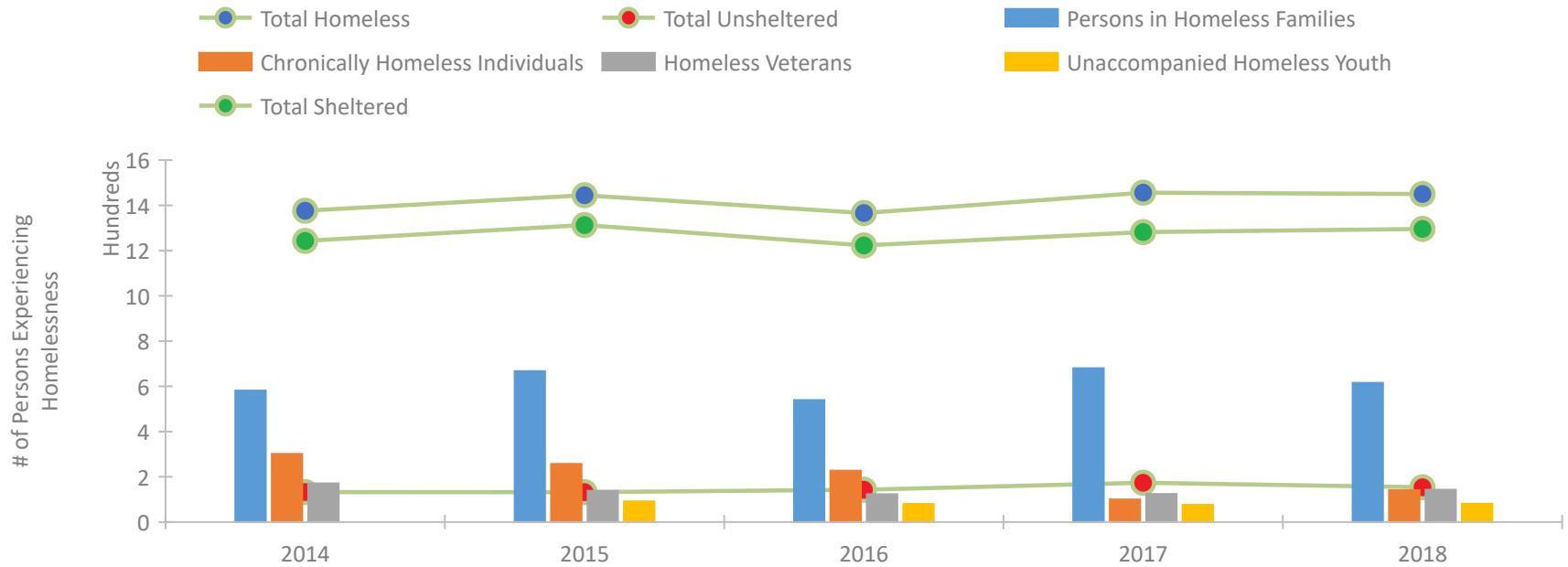


2018 CoC Boundaries 2017 CoC Boundaries

Housing Inventory Count by Program Type

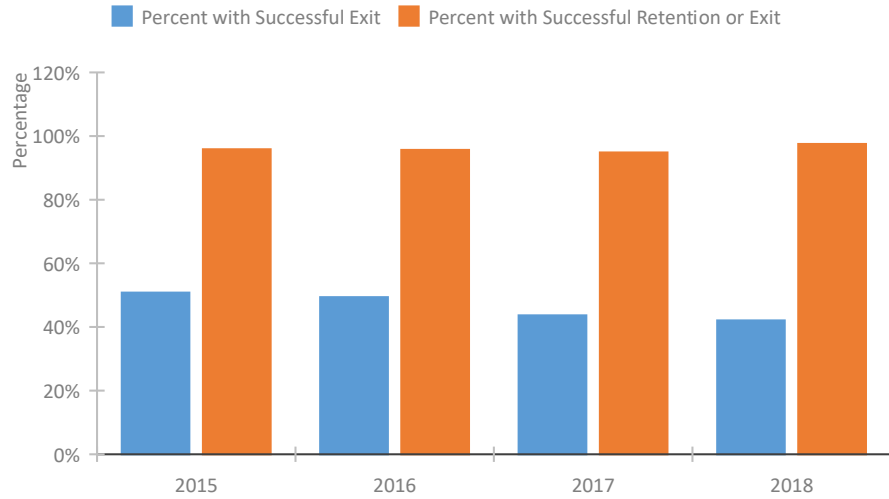


Homeless Population – Point-in-Time (PIT) Count

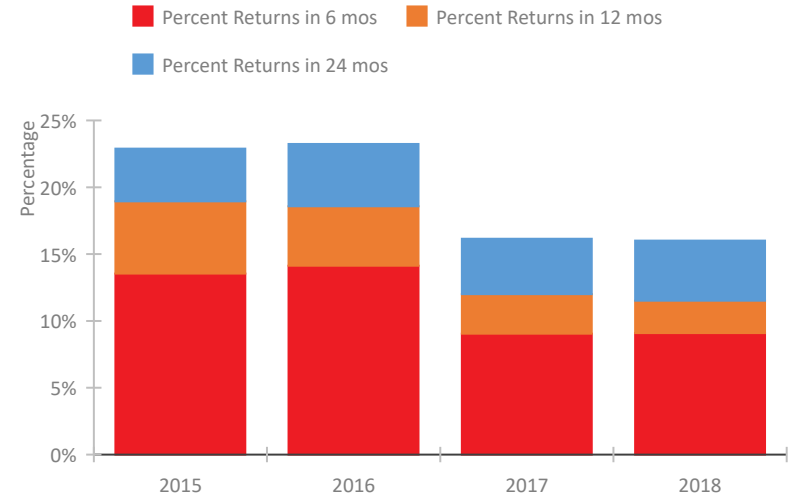


New Hampshire Continuum of Care Performance Profile

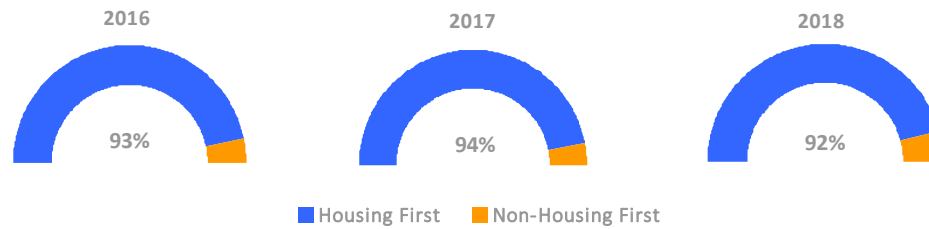
Exits to Permanent Housing by Program Type



Returns to Homelessness Over Time



Proportion of Housing First Projects by Year



Number of Projects by Year

	2016	2017	2018
Housing First Projects	54	59	55
Non-Housing First Projects	4	4	5

Data Summary: New Hampshire

Point-In-Time Count Summary

	2014	2015	2016	2017	2018	2017-18 Change	% Change
Number of Sheltered Persons in Families	567	647	528	644	603	-41	-6%
Number of Unsheltered Persons in Families	14	20	11	36	12	-24	-67%
Number of Sheltered Individuals	676	661	693	638	693	55	9%
Number of Unsheltered Individuals	118	111	131	138	142	4	3%
Total Homeless Persons	1,375	1,439	1,363	1,456	1,450	-6	0%
Number of Sheltered Families	207	238	181	221	210	-11	-5%
Number of Unsheltered Families	6	6	4	17	5	-12	-71%
Number of Total Families	213	244	185	238	215	-23	-10%
Sheltered Chronically Homeless Individuals	251	205	164	38	85	47	124%
Unsheltered Chronically Homeless Individuals	50	52	63	62	56	-6	-10%
Total Chronically Homeless Individuals	301	257	227	100	141	41	41%
Sheltered Veterans	162	124	119	113	136	23	20%
Unsheltered Veterans	9	14	4	11	7	-4	-36%
Total Veterans	171	138	123	124	143	19	15%
Sheltered Unaccompanied Youth (up to 24)	--	82	72	62	60	-2	-3%
Unsheltered Unaccompanied Youth (up to 24)	--	9	8	14	21	7	50%
Total Unaccompanied Youth (up to 24)	--	91	80	76	81	5	7%

System Performance Measures Summary

	2014	2015	2016	2017	2018	2017-18 Change	% Change
Rate People Return to Homelessness in 6 Months	N/A	13.5%	14.1%	9.0%	9.1%	0%	N/A
Number of People who are Homeless for the First Time	N/A	4,246	4,276	4,060	3,408	-652	-16.1%
Rate People Exit from ES, SH, TH, and RRH to PH	N/A	50.8%	49.4%	43.6%	42.1%	-1.6%	N/A
Rate People in PSH and OPH Retain or Exit to PH	N/A	95.9%	95.6%	94.8%	97.5%	2.7%	N/A

Housing Inventory Count Summary

	2014	2015	2016	2017	2018	2017-18 Change	% Change
Emergency Shelter (ES)	739	748	807	807	819	12	1%
Safe Haven (SH)	9	9	9	9	9	0	0%
Transitional Housing (TH)	650	612	660	567	521	-46	-8%
Permanent Supportive Housing (PSH)	1,083	1,110	1,097	1,125	1,114	-11	-1%
Rapid Re-Housing (RRH)	184	116	144	228	307	79	35%
Other Permanent Housing (OPH)	--	--	--	78	87	9	12%

Award Summary

	2014	2015	2016	2017	2018	2017-18 Change	% Change
Continuum of Care (CoC)	\$6,622,195	\$6,904,996	\$6,969,952	\$7,253,904	\$7,674,344	\$420,440	6%
Emergency Solutions Grants (ESG)	\$931,020	\$1,009,517	\$1,014,432	\$1,016,342	\$1,020,856	\$4,514	0%