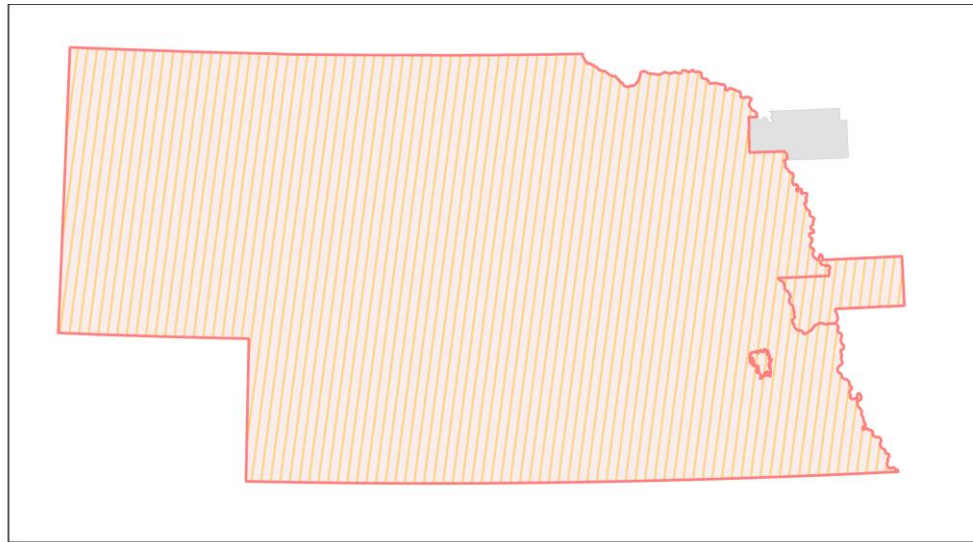
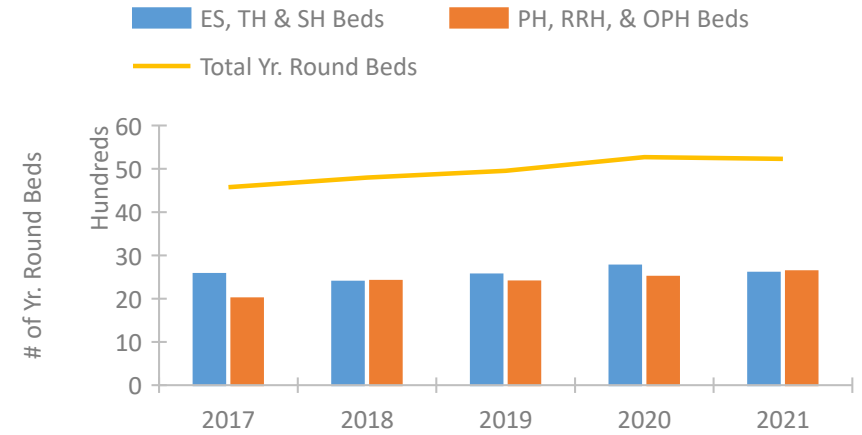


Nebraska Continuum of Care Performance Profile

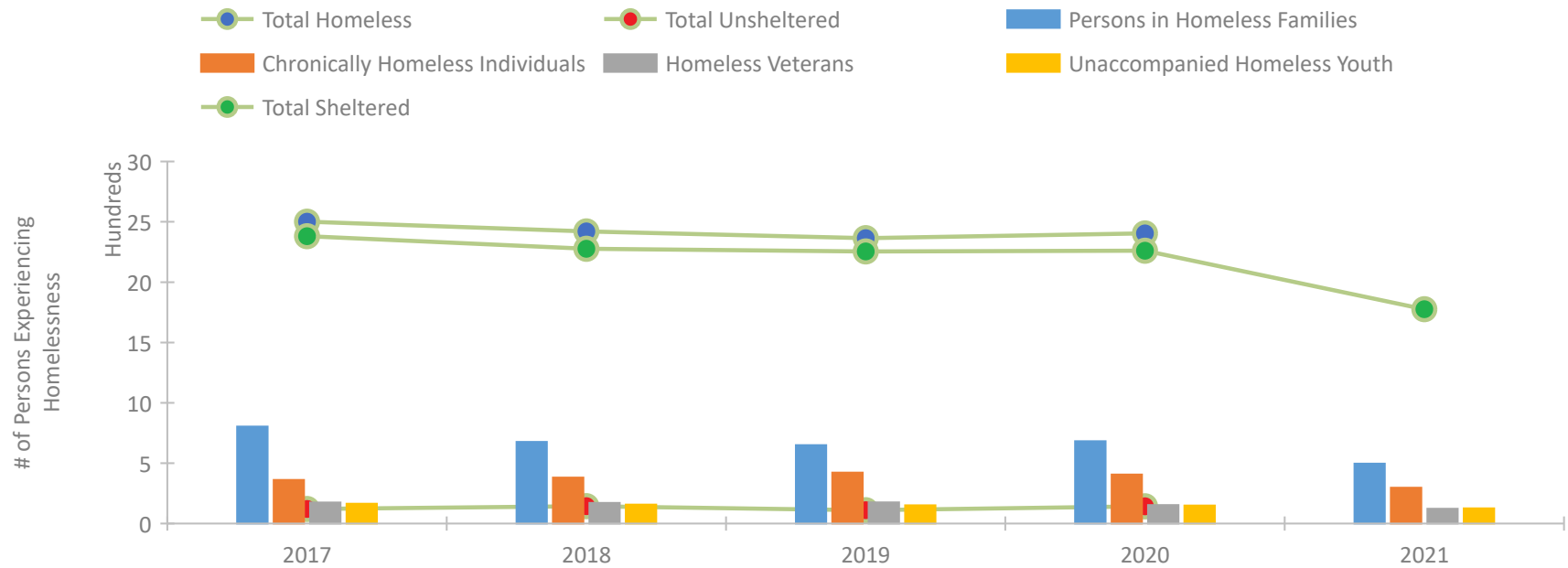


2021 CoC Boundaries 2020 CoC Boundaries

Housing Inventory Count by Program Type



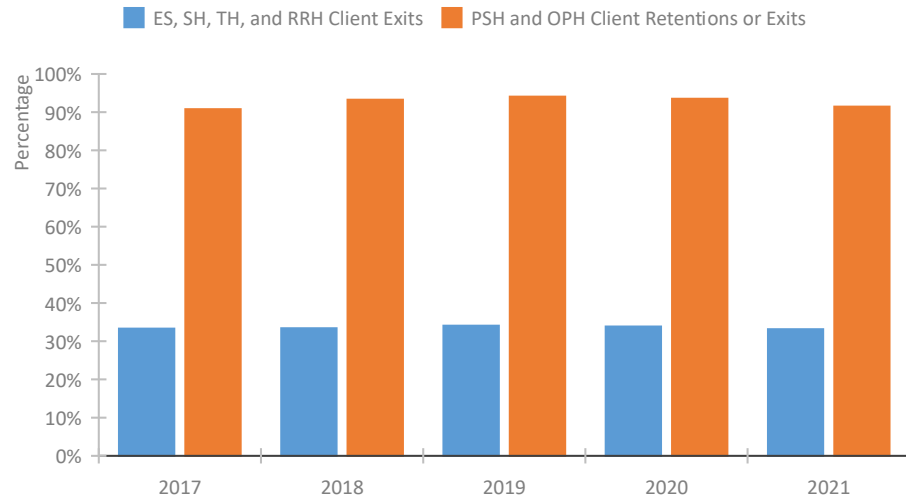
Homeless Population – Point-in-Time (PIT) Count*



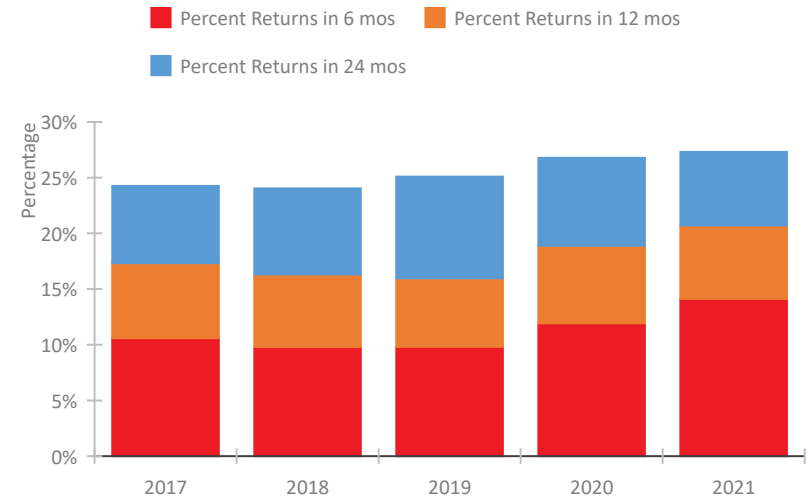
*In 2021, HUD gave communities the option to cancel or modify the unsheltered survey portion of their counts based on the potential risk of COVID-19 transmission associated with conducting an in-person survey. As a result, HUD has excluded the unsheltered population sub-totals and all unsheltered sub-population data for this reporting period. The user is cautioned that the unsheltered and total homeless counts reported here may be missing data.

Nebraska Continuum of Care Performance Profile

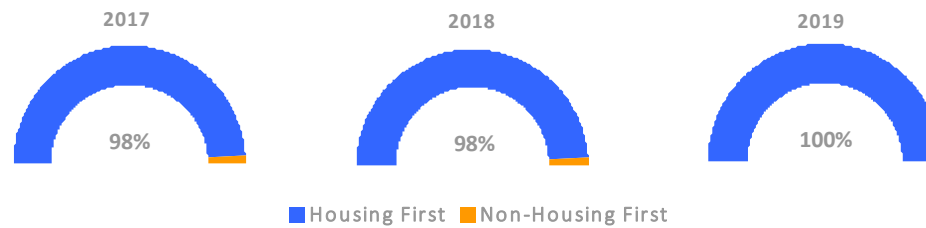
Exits to Permanent Housing by Program Type



Returns to Homelessness Over Time



Proportion of Housing First Projects by Year†



Number of Projects by Year

	2017	2018	2019
Housing First Projects	47	47	41
Non-Housing First Projects	1	1	0

†2021 Data unavailable at the time of report publication. In 2020 HUD awarded renewal projects noncompetitively, therefore no new data was collected and Housing First data remains the same from 2019 to 2020.

Data Summary: Nebraska

Point-In-Time Count Summary*

	2017	2018	2019	2020	2021	2020-21 Change	% Change
Number of Sheltered Persons in Families	803	669	647	673	496	-177	-26%
Number of Unsheltered Persons in Families	0	7	3	9	0	-9	-100%
Number of Sheltered Individuals	1,578	1,608	1,608	1,588	1,280	-308	-19%
Number of Unsheltered Individuals	120	137	107	134	--	--	--
Total Homeless Persons	2,501	2,421	2,365	2,404	1,776	-628	-26%
Number of Sheltered Families	266	234	200	200	161	-39	-20%
Number of Unsheltered Families	0	2	1	2	--	--	--
Number of Total Families	266	236	201	202	161	-41	-20%
Sheltered Chronically Homeless Individuals	285	325	381	343	297	-46	-13%
Unsheltered Chronically Homeless Individuals	76	55	41	63	--	--	--
Total Chronically Homeless Individuals	361	380	422	406	297	-109	-27%
Sheltered Veterans	172	168	164	146	122	-24	-16%
Unsheltered Veterans	2	3	11	7	--	--	--
Total Veterans	174	171	175	153	122	-31	-20%
Sheltered Unaccompanied Youth (up to 24)	151	144	138	140	125	-15	-11%
Unsheltered Unaccompanied Youth (up to 24)	13	13	13	9	--	--	--
Total Unaccompanied Youth (up to 24)	164	157	151	149	125	-24	-16%

System Performance Measures Summary

	2017	2018	2019	2020	2021	2020-21 Change	% Change
Rate People Return to Homelessness in 6 Months	10.6%	9.8%	9.8%	11.9%	14.1%	2.2%	N/A
Number of People who are Homeless for the First Time	7,667	7,156	7,338	5,136	6,309	1,173	22.8%
Rate People Exit from ES, SH, TH, and RRH to PH	33.3%	33.4%	34.1%	33.9%	33.1%	-0.7%	N/A
Rate People in PSH and OPH Retain or Exit to PH	90.8%	93.3%	94.1%	93.5%	91.4%	-2%	N/A

Housing Inventory Count Summary

	2017	2018	2019	2020	2021	2020-21 Change	% Change
Emergency Shelter (ES)	1,576	1,686	1,562	1,997	1,899	-98	-5%
Safe Haven (SH)	--	--	34	34	34	0	0%
Transitional Housing (TH)	993	704	962	733	666	-67	-9%
Permanent Supportive Housing (PSH)	1,105	1,240	1,285	1,260	1,224	-36	-3%
Rapid Re-Housing (RRH)	621	896	856	955	1,071	116	12%
Other Permanent Housing (OPH)	280	273	256	291	336	45	15%

Award Summary

	2017	2018	2019	2020	2021	2020-21 Change	% Change
Continuum of Care (CoC)	\$9,050,905	\$9,108,192	\$9,217,246	\$12,476,274	\$12,428,405	(\$47,869)	0%
Emergency Solutions Grants (ESG)	\$1,476,249	\$1,482,702	\$1,536,911	\$1,575,335	\$1,576,339	\$1,004	0%
Youth Homelessness Demonstration Program (YHDP)	\$3,278,017	--	\$2,200,222	--	--	--	--

*In 2021, HUD gave communities the option to cancel or modify the unsheltered survey portion of their counts based on the potential risk of COVID-19 transmission associated with conducting an in-person survey. As a result, HUD has excluded the unsheltered population sub-totals and all unsheltered sub-population data for this reporting period. The user is cautioned that the unsheltered and total homeless counts reported here may be missing data.