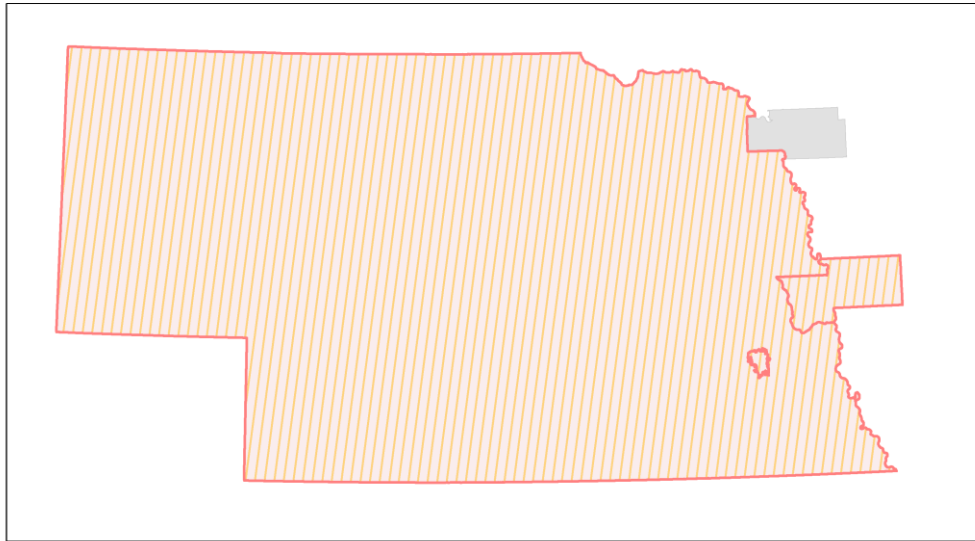
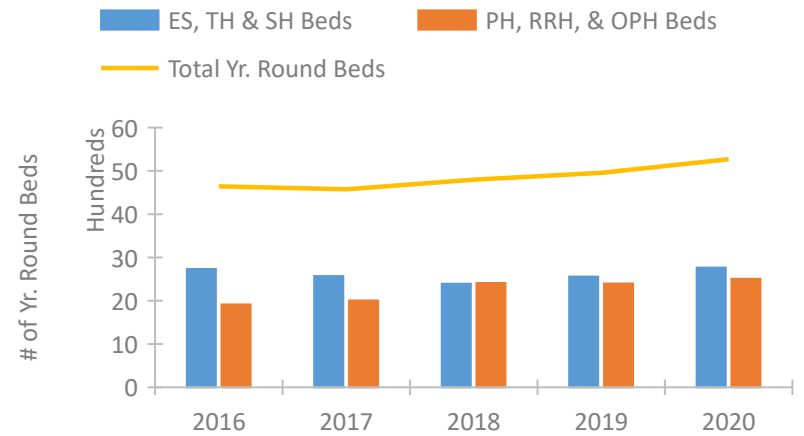


## Nebraska Continuum of Care Performance Profile

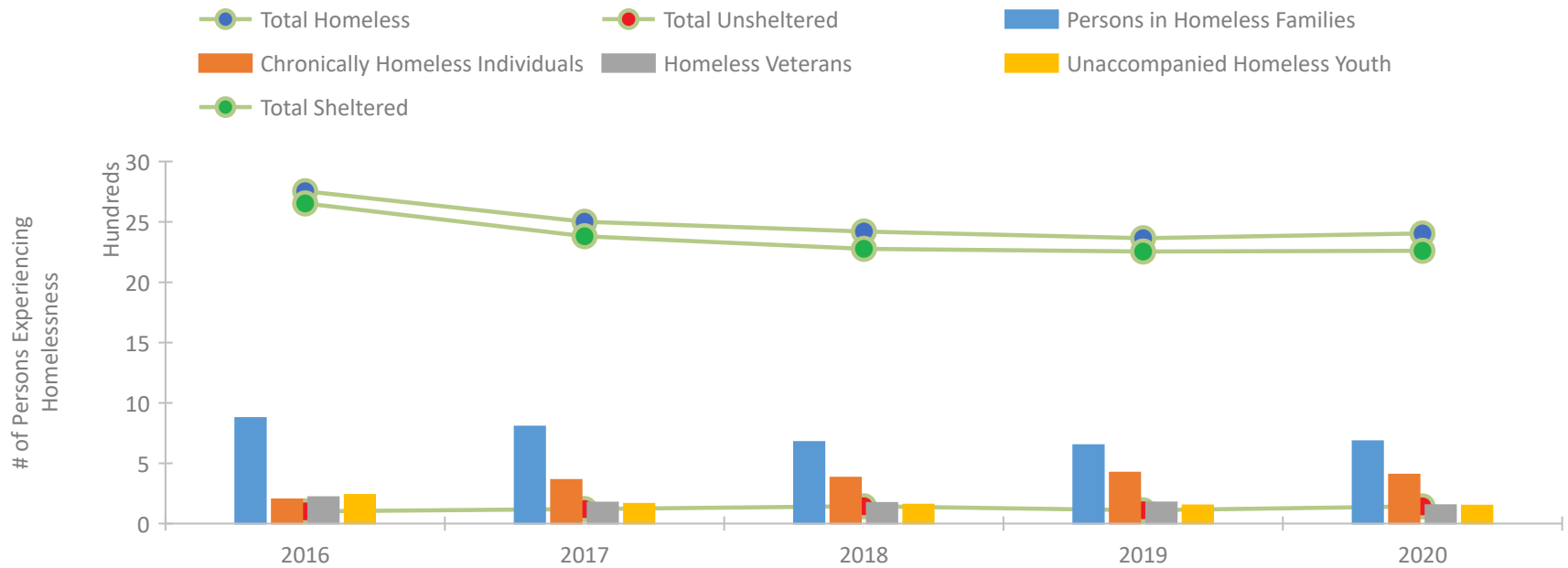


2020 CoC Boundaries 2019 CoC Boundaries

### Housing Inventory Count by Program Type

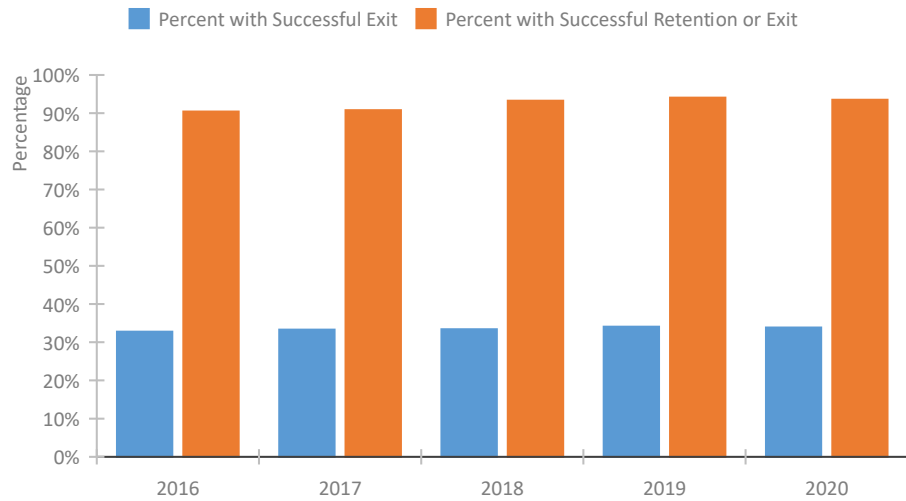


### Homeless Population – Point-in-Time (PIT) Count

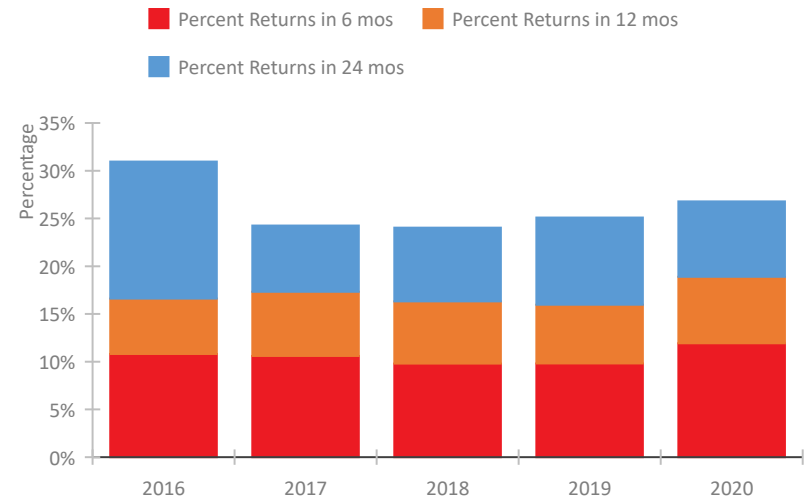


## Nebraska Continuum of Care Performance Profile

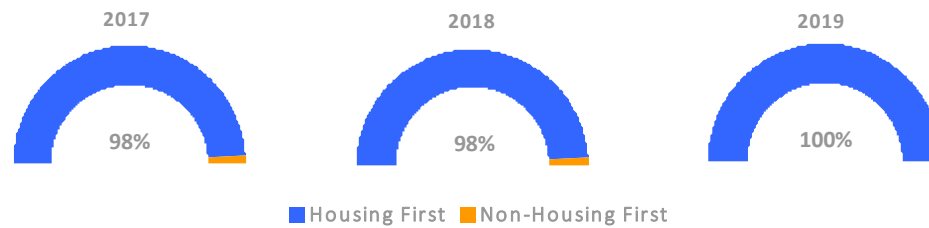
### Exits to Permanent Housing by Program Type



### Returns to Homelessness Over Time



### Proportion of Housing First Projects by Year\*



Number of Projects by Year			
	2017	2018	2019
Housing First Projects	47	47	41
Non-Housing First Projects	1	1	0

\*In 2020 HUD awarded renewal projects noncompetitively, therefore no new data was collected and Housing First data remains the same from 2019 to 2020.

## Data Summary: Nebraska

### Point-In-Time Count Summary

	2016	2017	2018	2019	2020	2019-20 Change	% Change
Number of Sheltered Persons in Families	874	803	669	647	673	26	4%
Number of Unsheltered Persons in Families	0	0	7	3	9	6	200%
Number of Sheltered Individuals	1,779	1,578	1,608	1,608	1,588	-20	-1%
Number of Unsheltered Individuals	101	120	137	107	134	27	25%
<b>Total Homeless Persons</b>	<b>2,754</b>	<b>2,501</b>	<b>2,421</b>	<b>2,365</b>	<b>2,404</b>	<b>39</b>	<b>2%</b>
Number of Sheltered Families	280	266	234	200	200	0	-0%
Number of Unsheltered Families	0	0	2	1	2	1	100%
<b>Number of Total Families</b>	<b>280</b>	<b>266</b>	<b>236</b>	<b>201</b>	<b>202</b>	<b>1</b>	<b>0%</b>
Sheltered Chronically Homeless Individuals	163	285	325	381	343	-38	-10%
Unsheltered Chronically Homeless Individuals	37	76	55	41	63	22	54%
<b>Total Chronically Homeless Individuals</b>	<b>200</b>	<b>361</b>	<b>380</b>	<b>422</b>	<b>406</b>	<b>-16</b>	<b>-4%</b>
Sheltered Veterans	211	172	168	164	146	-18	-11%
Unsheltered Veterans	8	2	3	11	7	-4	-36%
<b>Total Veterans</b>	<b>219</b>	<b>174</b>	<b>171</b>	<b>175</b>	<b>153</b>	<b>-22</b>	<b>-13%</b>
Sheltered Unaccompanied Youth (up to 24)	238	151	144	138	140	2	1%
Unsheltered Unaccompanied Youth (up to 24)	0	13	13	13	9	-4	-31%
<b>Total Unaccompanied Youth (up to 24)</b>	<b>238</b>	<b>164</b>	<b>157</b>	<b>151</b>	<b>149</b>	<b>-2</b>	<b>-1%</b>

### System Performance Measures Summary

	2016	2017	2018	2019	2020	2019-20 Change	% Change
Rate People Return to Homelessness in 6 Months	10.8%	10.6%	9.8%	9.8%	11.9%	2.1%	N/A
Number of People who are Homeless for the First Time	8,334	7,667	7,156	7,338	5,136	-2,202	-30%
Rate People Exit from ES, SH, TH, and RRH to PH	32.8%	33.3%	33.4%	34.1%	33.9%	-0.2%	N/A
Rate People in PSH and OPH Retain or Exit to PH	90.4%	90.8%	93.3%	94.1%	93.5%	-0.6%	N/A

### Housing Inventory Count Summary

	2016	2017	2018	2019	2020	2019-20 Change	% Change
Emergency Shelter (ES)	1,399	1,576	1,686	1,562	1,997	435	28%
Safe Haven (SH)	--	--	--	34	34	0	-0%
Transitional Housing (TH)	1,334	993	704	962	733	-229	-24%
Permanent Supportive Housing (PSH)	1,113	1,105	1,240	1,285	1,260	-25	-2%
Rapid Re-Housing (RRH)	600	621	896	856	955	99	12%
Other Permanent Housing (OPH)	199	280	273	256	291	35	14%

### Award Summary

	2016	2017	2018	2019	2020	2019-20 Change	% Change
<b>Continuum of Care (CoC)</b>	\$8,519,702	\$9,050,905	\$9,108,192	\$9,217,246	\$12,476,274	\$3,259,028	35%
<b>Emergency Solutions Grants (ESG)</b>	\$1,473,274	\$1,476,249	\$1,482,702	\$1,536,911	\$1,575,335	\$38,424	3%
<b>Youth Homelessness Demonstration Program (YHDP)</b>	--	\$3,278,017	--	\$2,200,222	--	--	--