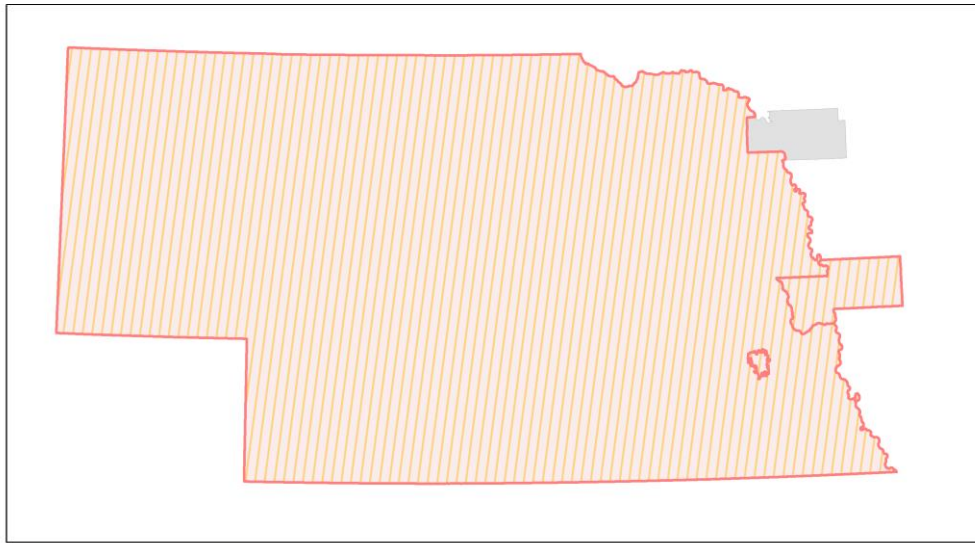
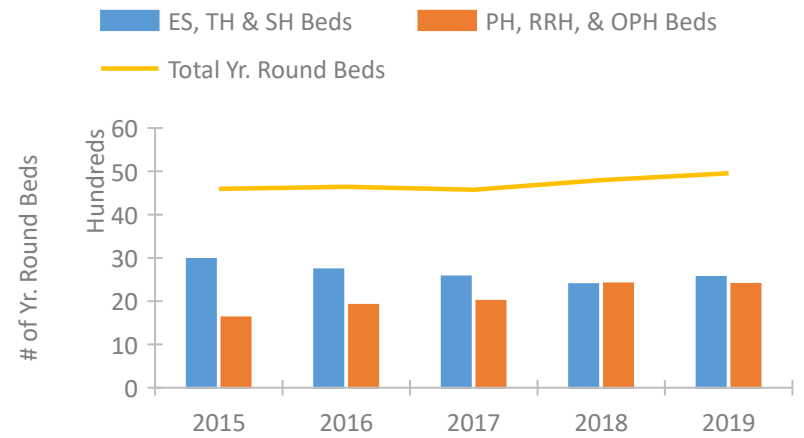


Nebraska Continuum of Care Performance Profile

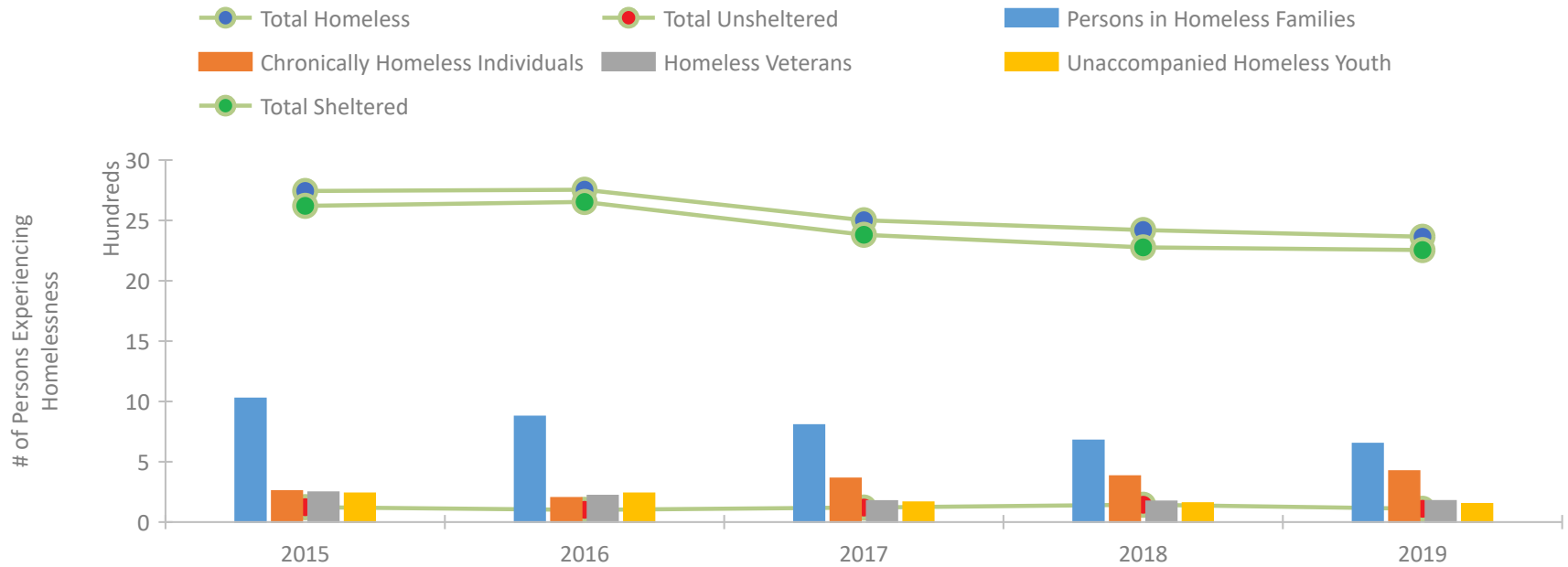


2019 CoC Boundaries 2018 CoC Boundaries

Housing Inventory Count by Program Type

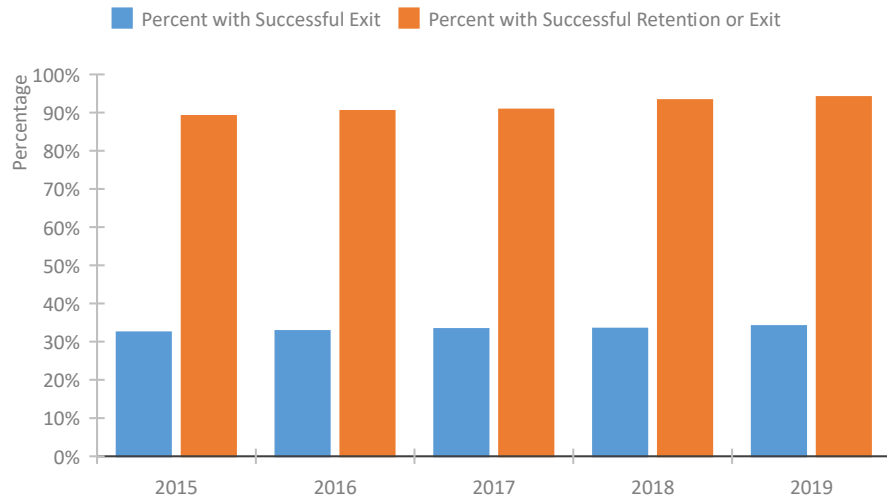


Homeless Population – Point-in-Time (PIT) Count

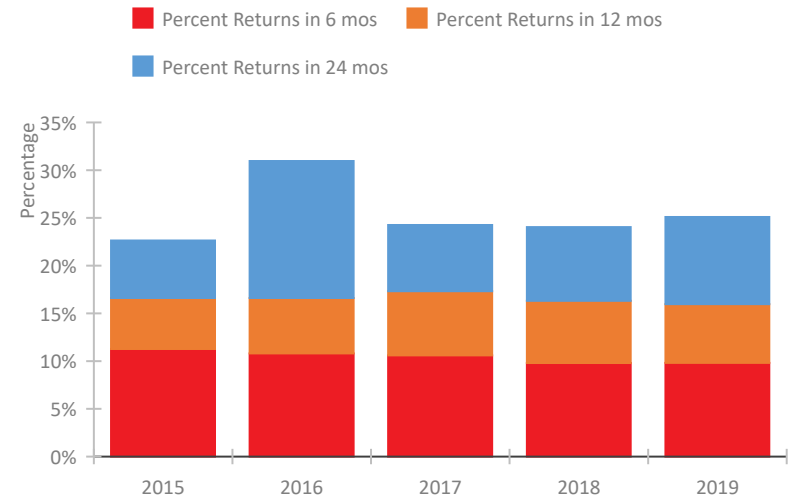


Nebraska Continuum of Care Performance Profile

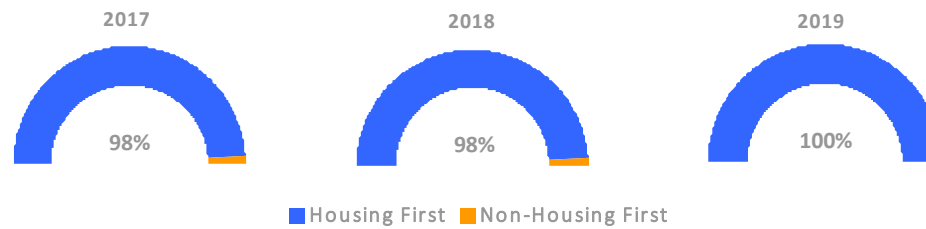
Exits to Permanent Housing by Program Type



Returns to Homelessness Over Time



Proportion of Housing First Projects by Year



Number of Projects by Year

	2017	2018	2019
Housing First Projects	47	47	41
Non-Housing First Projects	1	1	0

Data Summary: Nebraska

Point-In-Time Count Summary

	2015	2016	2017	2018	2019	2018-19 Change	% Change
Number of Sheltered Persons in Families	1,024	874	803	669	647	-22	-3%
Number of Unsheltered Persons in Families	0	0	0	7	3	-4	-57%
Number of Sheltered Individuals	1,597	1,779	1,578	1,608	1,608	0	0%
Number of Unsheltered Individuals	123	101	120	137	107	-30	-22%
Total Homeless Persons	2,744	2,754	2,501	2,421	2,365	-56	-2%
Number of Sheltered Families	327	280	266	234	200	-34	-15%
Number of Unsheltered Families	0	0	0	2	1	-1	-50%
Number of Total Families	327	280	266	236	201	-35	-15%
Sheltered Chronically Homeless Individuals	201	163	285	325	381	56	17%
Unsheltered Chronically Homeless Individuals	56	37	76	55	41	-14	-25%
Total Chronically Homeless Individuals	257	200	361	380	422	42	11%
Sheltered Veterans	231	211	172	168	164	-4	-2%
Unsheltered Veterans	16	8	2	3	11	8	267%
Total Veterans	247	219	174	171	175	4	2%
Sheltered Unaccompanied Youth (up to 24)	220	238	151	144	138	-6	-4%
Unsheltered Unaccompanied Youth (up to 24)	18	0	13	13	13	0	0%
Total Unaccompanied Youth (up to 24)	238	238	164	157	151	-6	-4%

System Performance Measures Summary

	2015	2016	2017	2018	2019	2018-19 Change	% Change
Rate People Return to Homelessness in 6 Months	11.3%	10.8%	10.6%	9.8%	9.8%	0%	N/A
Number of People who are Homeless for the First Time	7,585	8,334	7,667	7,156	7,338	182	2.5%
Rate People Exit from ES, SH, TH, and RRH to PH	32.4%	32.8%	33.3%	33.4%	34.1%	0.7%	N/A
Rate People in PSH and OPH Retain or Exit to PH	89.1%	90.4%	90.8%	93.3%	94.1%	0.8%	N/A

Housing Inventory Count Summary

	2015	2016	2017	2018	2019	2018-19 Change	% Change
Emergency Shelter (ES)	1,559	1,399	1,576	1,686	1,562	-124	-7%
Safe Haven (SH)	--	--	--	--	34	--	--
Transitional Housing (TH)	1,414	1,334	993	704	962	258	37%
Permanent Supportive Housing (PSH)	1,024	1,113	1,105	1,240	1,285	45	4%
Rapid Re-Housing (RRH)	417	600	621	896	856	-40	-4%
Other Permanent Housing (OPH)	181	199	280	273	256	-17	-6%

Award Summary

	2015	2016	2017	2018	2019	2018-19 Change	% Change
Continuum of Care (CoC)	\$8,478,519	\$8,519,702	\$9,050,905	\$9,108,192	\$9,217,246	\$109,054	1%
Emergency Solutions Grants (ESG)	\$1,489,779	\$1,473,274	\$1,476,249	\$1,482,702	\$1,536,911	\$54,209	4%
Youth Homelessness Demonstration Program (YHDP)	N/A	--	\$3,278,017	--	--	--	--