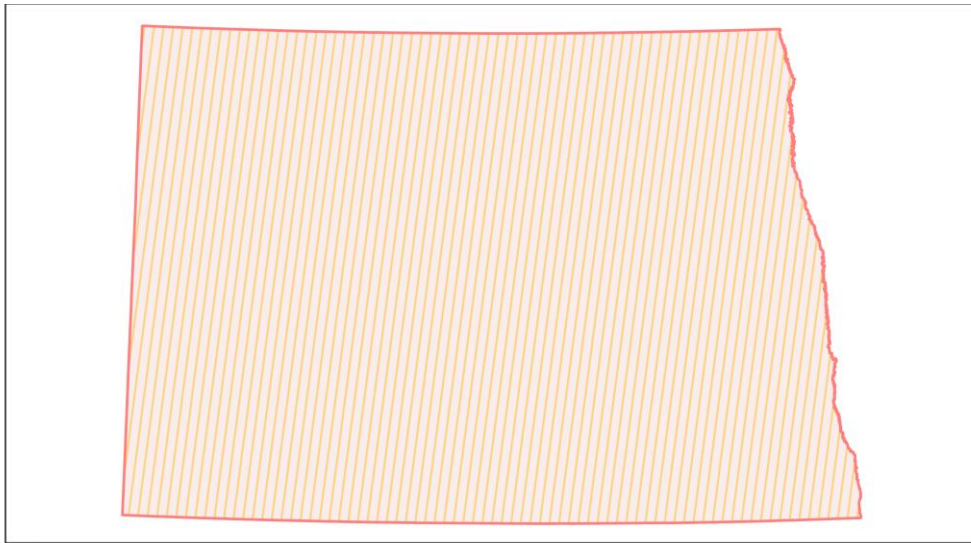
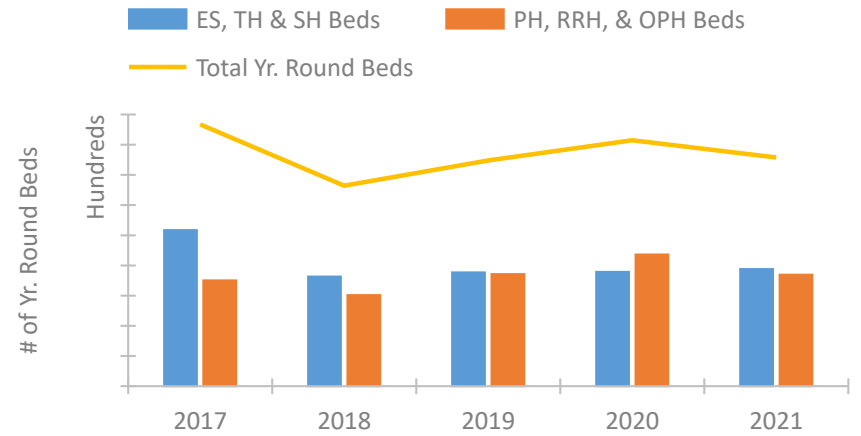


## North Dakota Continuum of Care Performance Profile

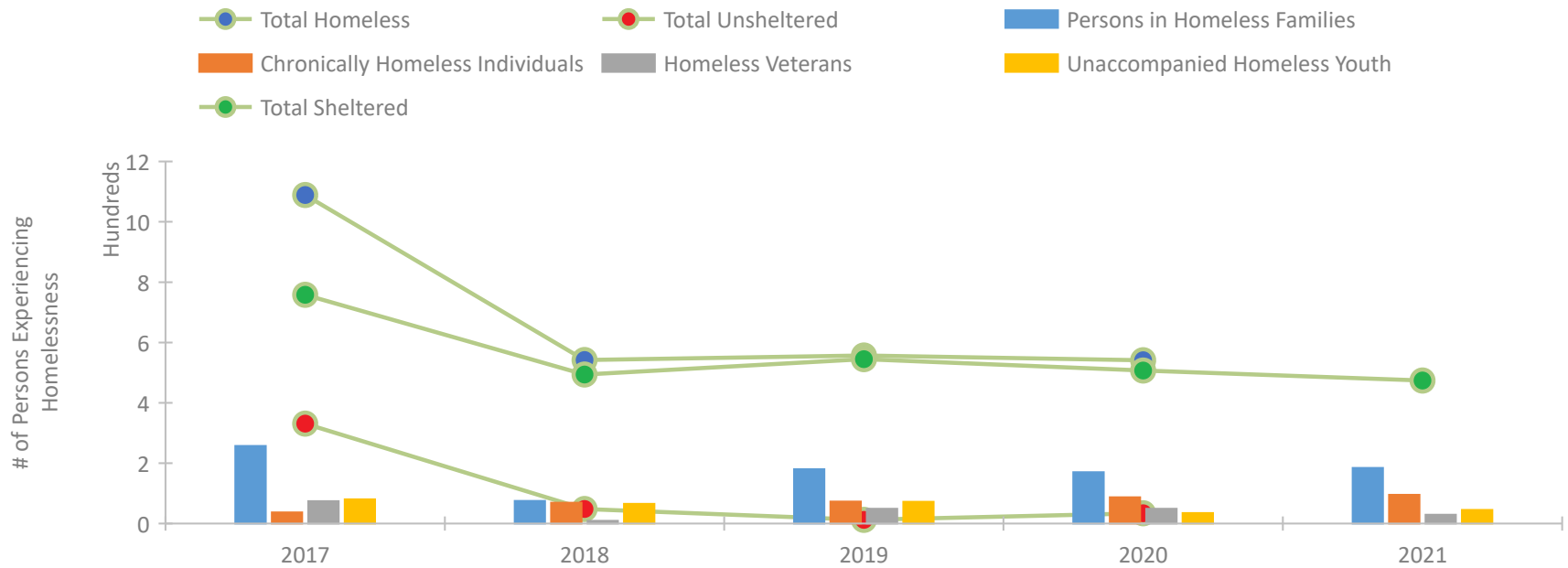


2021 CoC Boundaries 2020 CoC Boundaries

### Housing Inventory Count by Program Type



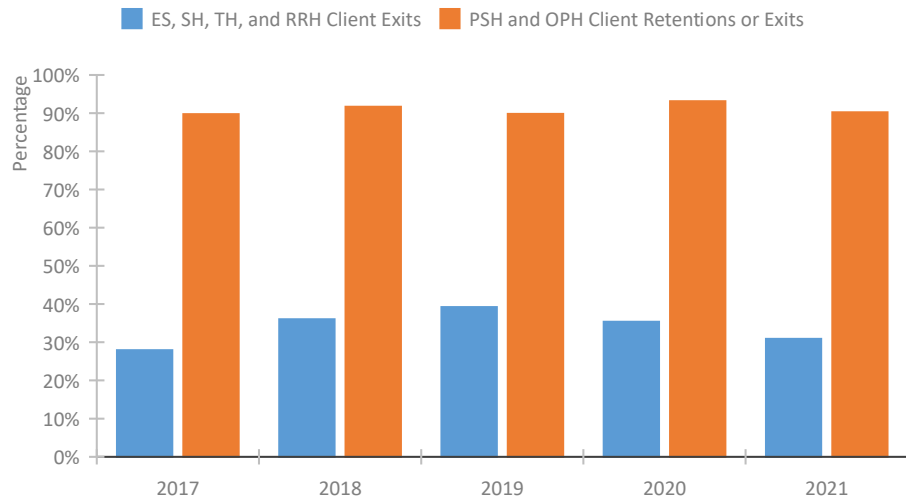
### Homeless Population – Point-in-Time (PIT) Count\*



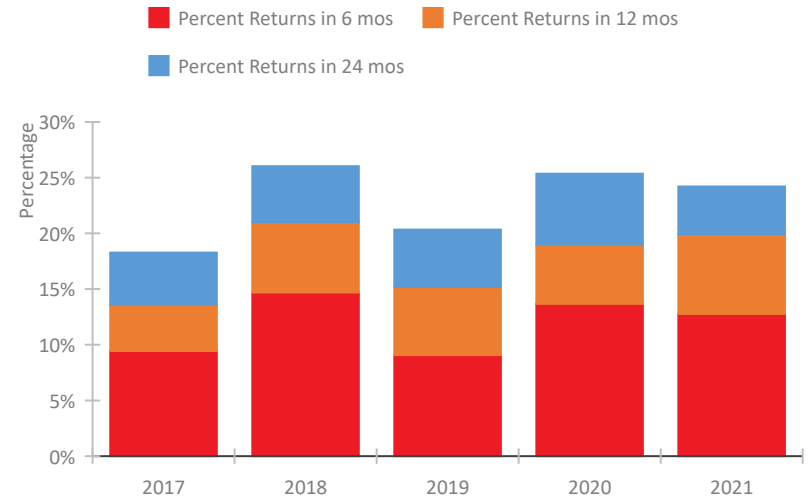
\*In 2021, HUD gave communities the option to cancel or modify the unsheltered survey portion of their counts based on the potential risk of COVID-19 transmission associated with conducting an in-person survey. As a result, HUD has excluded the unsheltered population sub-totals and all unsheltered sub-population data for this reporting period. The user is cautioned that the unsheltered and total homeless counts reported here may be missing data.

## North Dakota Continuum of Care Performance Profile

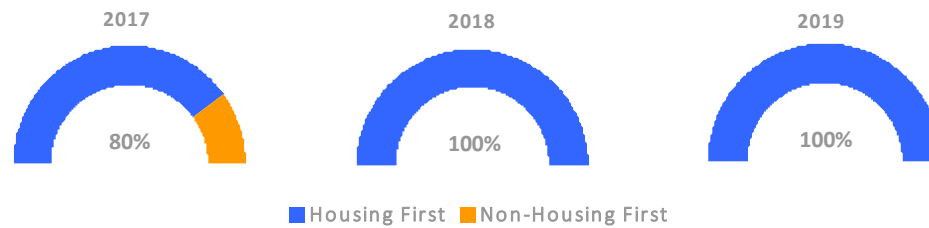
### Exits to Permanent Housing by Program Type



### Returns to Homelessness Over Time



### Proportion of Housing First Projects by Year†



Number of Projects by Year			
	2017	2018	2019
Housing First Projects	16	1	18
Non-Housing First Projects	4	-1	0

†2021 Data unavailable at the time of report publication. In 2020 HUD awarded renewal projects noncompetitively, therefore no new data was collected and Housing First data remains the same from 2019 to 2020.

## Data Summary: North Dakota

### Point-In-Time Count Summary\*

	2017	2018	2019	2020	2021	2020-21 Change	% Change
Number of Sheltered Persons in Families	108	75	171	170	184	14	8%
Number of Unsheltered Persons in Families	149	0	9	0	0	0	--
Number of Sheltered Individuals	650	419	374	337	290	-47	-14%
Number of Unsheltered Individuals	182	48	3	34	--	--	--
<b>Total Homeless Persons</b>	<b>1,089</b>	<b>542</b>	<b>557</b>	<b>541</b>	<b>474</b>	<b>-67</b>	<b>-12%</b>
Number of Sheltered Families	36	27	48	54	58	4	7%
Number of Unsheltered Families	41	0	3	0	--	--	--
<b>Number of Total Families</b>	<b>77</b>	<b>27</b>	<b>51</b>	<b>54</b>	<b>58</b>	<b>4</b>	<b>7%</b>
Sheltered Chronically Homeless Individuals	25	69	73	72	95	23	32%
Unsheltered Chronically Homeless Individuals	12	0	0	15	--	--	--
<b>Total Chronically Homeless Individuals</b>	<b>37</b>	<b>69</b>	<b>73</b>	<b>87</b>	<b>95</b>	<b>8</b>	<b>9%</b>
Sheltered Veterans	58	9	49	45	29	-16	-36%
Unsheltered Veterans	16	0	0	4	--	--	--
<b>Total Veterans</b>	<b>74</b>	<b>9</b>	<b>49</b>	<b>49</b>	<b>29</b>	<b>-20</b>	<b>-41%</b>
Sheltered Unaccompanied Youth (up to 24)	66	58	72	32	45	13	41%
Unsheltered Unaccompanied Youth (up to 24)	14	7	0	3	--	--	--
<b>Total Unaccompanied Youth (up to 24)</b>	<b>80</b>	<b>65</b>	<b>72</b>	<b>35</b>	<b>45</b>	<b>10</b>	<b>29%</b>

### System Performance Measures Summary

	2017	2018	2019	2020	2021	2020-21 Change	% Change
Rate People Return to Homelessness in 6 Months	9.4%	14.7%	9.1%	13.7%	12.8%	-0.9%	N/A
Number of People who are Homeless for the First Time	2,072	2,021	1,566	1,481	2,014	533	36%
Rate People Exit from ES, SH, TH, and RRH to PH	27.9%	36.0%	39.2%	35.4%	30.9%	-4.5%	N/A
Rate People in PSH and OPH Retain or Exit to PH	89.7%	91.7%	89.8%	93.1%	90.2%	-2.9%	N/A

### Housing Inventory Count Summary

	2017	2018	2019	2020	2021	2020-21 Change	% Change
Emergency Shelter (ES)	896	455	580	563	566	3	1%
Safe Haven (SH)	--	10	33	16	16	0	0%
Transitional Housing (TH)	138	261	141	178	194	16	9%
Permanent Supportive Housing (PSH)	630	517	516	743	594	-149	-20%
Rapid Re-Housing (RRH)	71	76	123	129	136	7	5%
Other Permanent Housing (OPH)	--	10	103	--	9	--	--

### Award Summary

	2017	2018	2019	2020	2021	2020-21 Change	% Change
<b>Continuum of Care (CoC)</b>	\$1,816,359	\$1,876,781	\$2,058,043	\$2,110,404	\$2,109,247	(\$1,157)	0%
<b>Emergency Solutions Grants (ESG)</b>	\$657,162	\$446,900	\$465,045	\$485,414	\$480,969	(\$4,445)	-1%
<b>Youth Homelessness Demonstration Program (YHDP)</b>	--	--	--	\$1,975,377	--	--	--

\*In 2021, HUD gave communities the option to cancel or modify the unsheltered survey portion of their counts based on the potential risk of COVID-19 transmission associated with conducting an in-person survey. As a result, HUD has excluded the unsheltered population sub-totals and all unsheltered sub-population data for this reporting period. The user is cautioned that the unsheltered and total homeless counts reported here may be missing data.