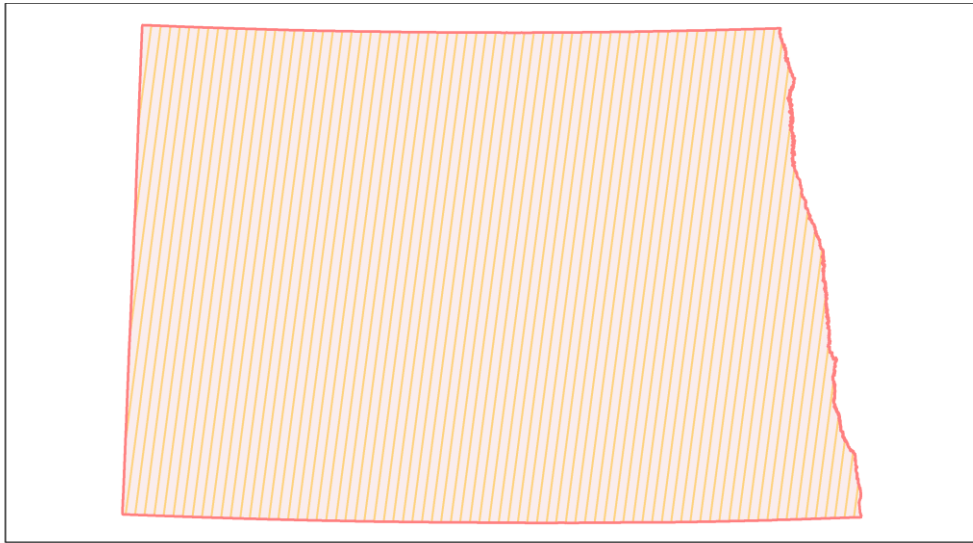
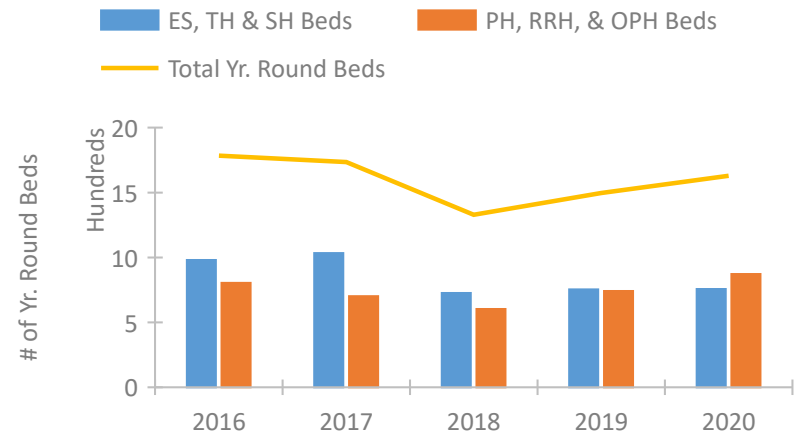


North Dakota Continuum of Care Performance Profile

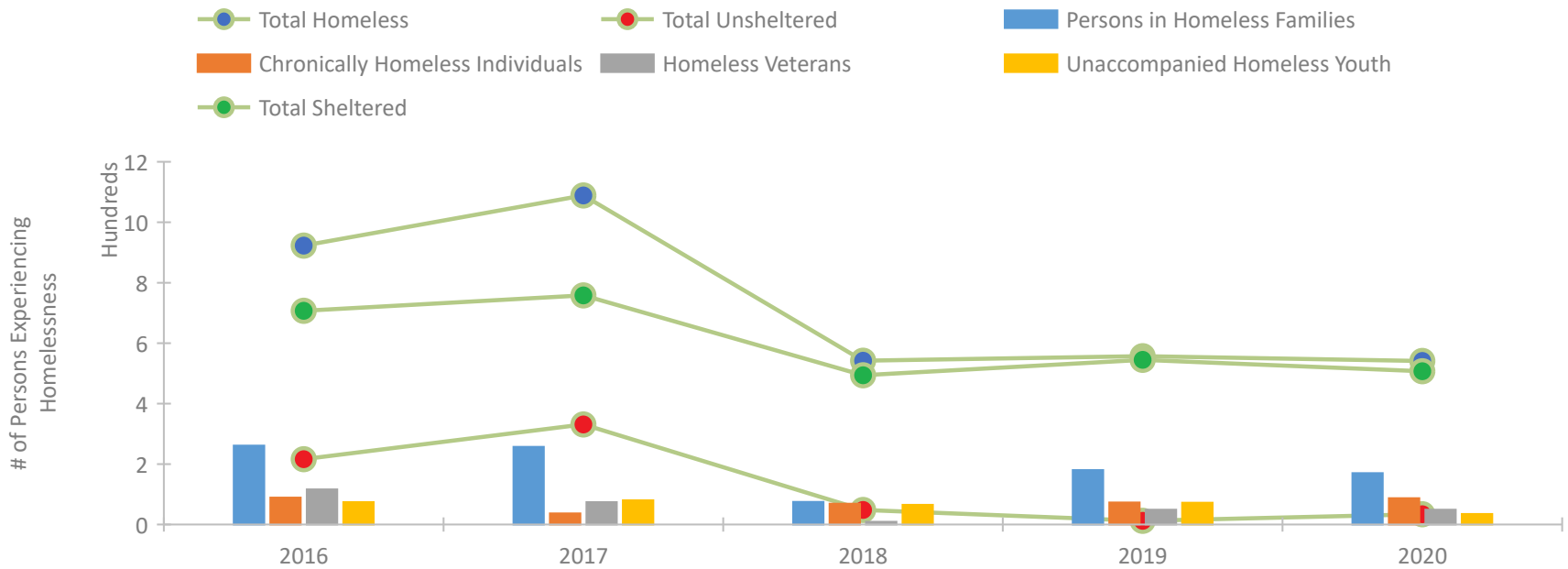


2020 CoC Boundaries 2019 CoC Boundaries

Housing Inventory Count by Program Type

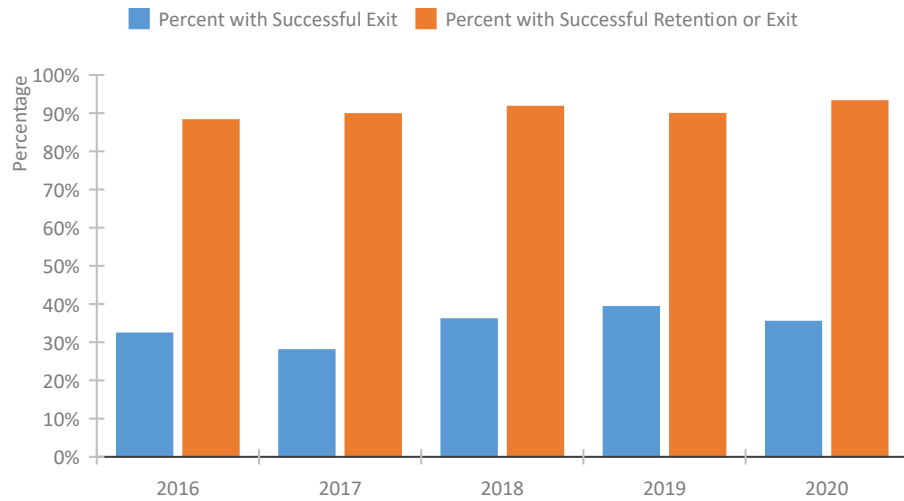


Homeless Population – Point-in-Time (PIT) Count

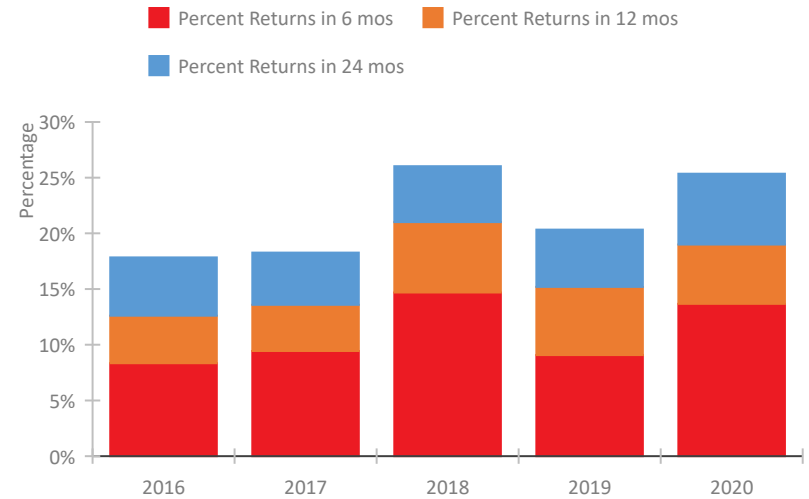


North Dakota Continuum of Care Performance Profile

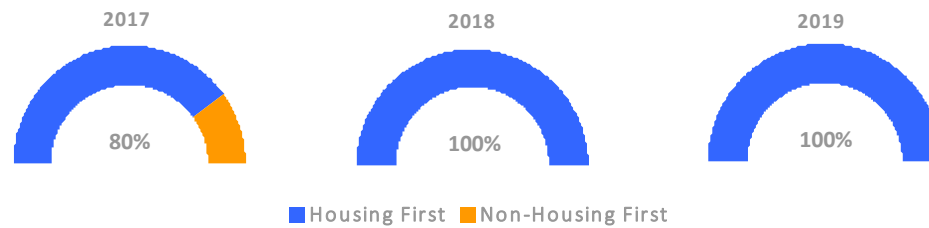
Exits to Permanent Housing by Program Type



Returns to Homelessness Over Time



Proportion of Housing First Projects by Year*



| Number of Projects by Year | | | |
|----------------------------|------|------|------|
| | 2017 | 2018 | 2019 |
| Housing First Projects | 16 | 1 | 18 |
| Non-Housing First Projects | 4 | -1 | 0 |

*In 2020 HUD awarded renewal projects noncompetitively, therefore no new data was collected and Housing First data remains the same from 2019 to 2020.

Data Summary: North Dakota

Point-In-Time Count Summary

| | 2016 | 2017 | 2018 | 2019 | 2020 | 2019-20 Change | % Change |
|---|------------|--------------|------------|------------|------------|----------------|-------------|
| Number of Sheltered Persons in Families | 198 | 108 | 75 | 171 | 170 | -1 | -1% |
| Number of Unsheltered Persons in Families | 63 | 149 | 0 | 9 | 0 | -9 | -100% |
| Number of Sheltered Individuals | 509 | 650 | 419 | 374 | 337 | -37 | -10% |
| Number of Unsheltered Individuals | 153 | 182 | 48 | 3 | 34 | 31 | 1033% |
| Total Homeless Persons | 923 | 1,089 | 542 | 557 | 541 | -16 | -3% |
| Number of Sheltered Families | 58 | 36 | 27 | 48 | 54 | 6 | 12% |
| Number of Unsheltered Families | 12 | 41 | 0 | 3 | 0 | -3 | -100% |
| Number of Total Families | 70 | 77 | 27 | 51 | 54 | 3 | 6% |
| Sheltered Chronically Homeless Individuals | 41 | 25 | 69 | 73 | 72 | -1 | -1% |
| Unsheltered Chronically Homeless Individuals | 48 | 12 | 0 | 0 | 15 | 15 | 100% |
| Total Chronically Homeless Individuals | 89 | 37 | 69 | 73 | 87 | 14 | 19% |
| Sheltered Veterans | 63 | 58 | 9 | 49 | 45 | -4 | -8% |
| Unsheltered Veterans | 53 | 16 | 0 | 0 | 4 | 4 | 100% |
| Total Veterans | 116 | 74 | 9 | 49 | 49 | 0 | -0% |
| Sheltered Unaccompanied Youth (up to 24) | 61 | 66 | 58 | 72 | 32 | -40 | -56% |
| Unsheltered Unaccompanied Youth (up to 24) | 13 | 14 | 7 | 0 | 3 | 3 | 100% |
| Total Unaccompanied Youth (up to 24) | 74 | 80 | 65 | 72 | 35 | -37 | -51% |

System Performance Measures Summary

| | 2016 | 2017 | 2018 | 2019 | 2020 | 2019-20 Change | % Change |
|--|-------|-------|-------|-------|-------|----------------|----------|
| Rate People Return to Homelessness in 6 Months | 8.3% | 9.4% | 14.7% | 9.1% | 13.7% | 4.6% | N/A |
| Number of People who are Homeless for the First Time | 2,184 | 2,072 | 2,021 | 1,566 | 1,481 | -85 | -5.4% |
| Rate People Exit from ES, SH, TH, and RRH to PH | 32.3% | 27.9% | 36.0% | 39.2% | 35.4% | -3.8% | N/A |
| Rate People in PSH and OPH Retain or Exit to PH | 88.1% | 89.7% | 91.7% | 89.8% | 93.1% | 3.3% | N/A |

Housing Inventory Count Summary

| | 2016 | 2017 | 2018 | 2019 | 2020 | 2019-20 Change | % Change |
|------------------------------------|------|------|------|------|------|----------------|----------|
| Emergency Shelter (ES) | 744 | 896 | 455 | 580 | 563 | -17 | -3% |
| Safe Haven (SH) | -- | -- | 10 | 33 | 16 | -17 | -52% |
| Transitional Housing (TH) | 236 | 138 | 261 | 141 | 178 | 37 | 26% |
| Permanent Supportive Housing (PSH) | 575 | 630 | 517 | 516 | 743 | 227 | 44% |
| Rapid Re-Housing (RRH) | 71 | 71 | 76 | 123 | 129 | 6 | 5% |

Award Summary

| | 2016 | 2017 | 2018 | 2019 | 2020 | 2019-20 Change | % Change |
|--|-------------|-------------|-------------|-------------|-------------|----------------|----------|
| Continuum of Care (CoC) | \$1,903,991 | \$1,816,359 | \$1,876,781 | \$2,058,043 | \$2,110,404 | \$52,361 | 3% |
| Emergency Solutions Grants (ESG) | \$442,064 | \$657,162 | \$446,900 | \$465,045 | \$485,414 | \$20,369 | 4% |
| Youth Homelessness Demonstration Program (YHDP) | -- | -- | -- | -- | \$1,975,377 | -- | -- |