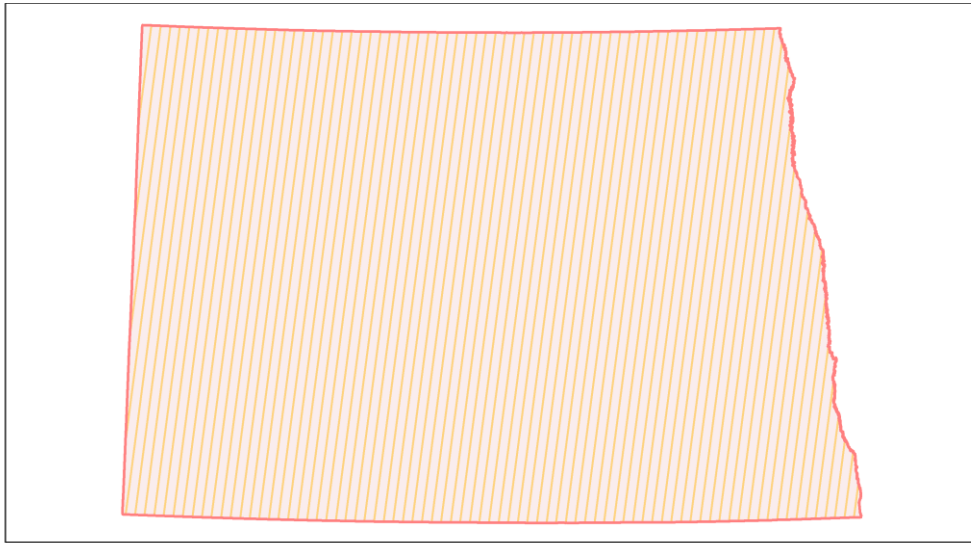
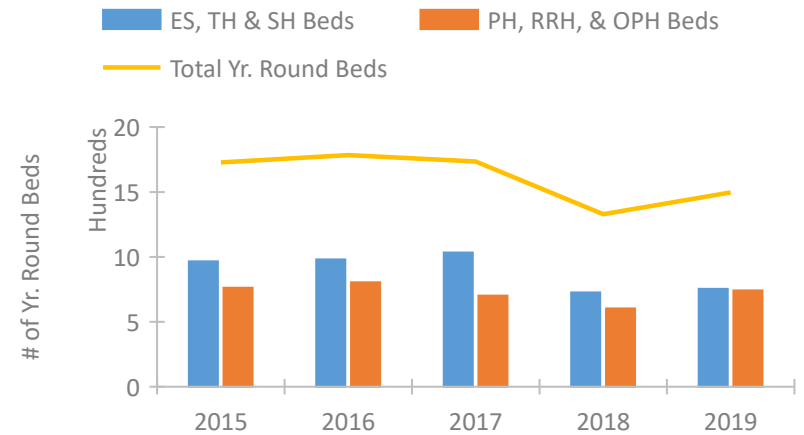


North Dakota Continuum of Care Performance Profile

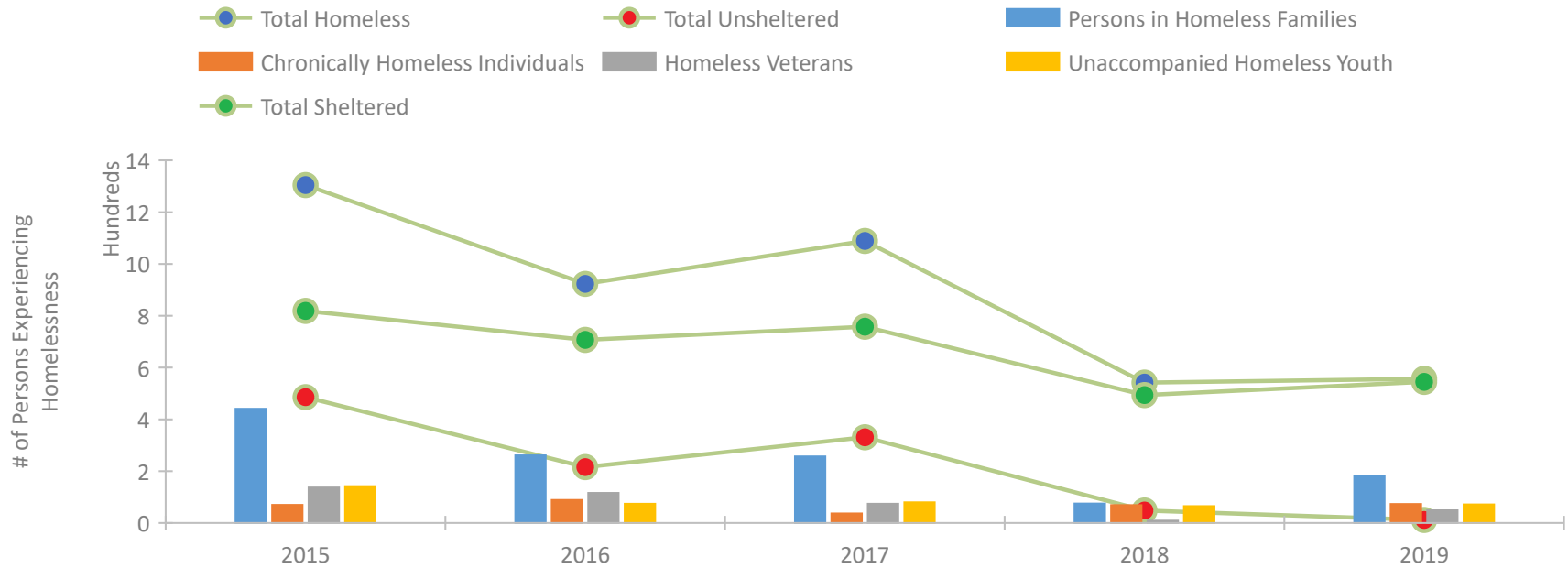


2019 CoC Boundaries 2018 CoC Boundaries

Housing Inventory Count by Program Type

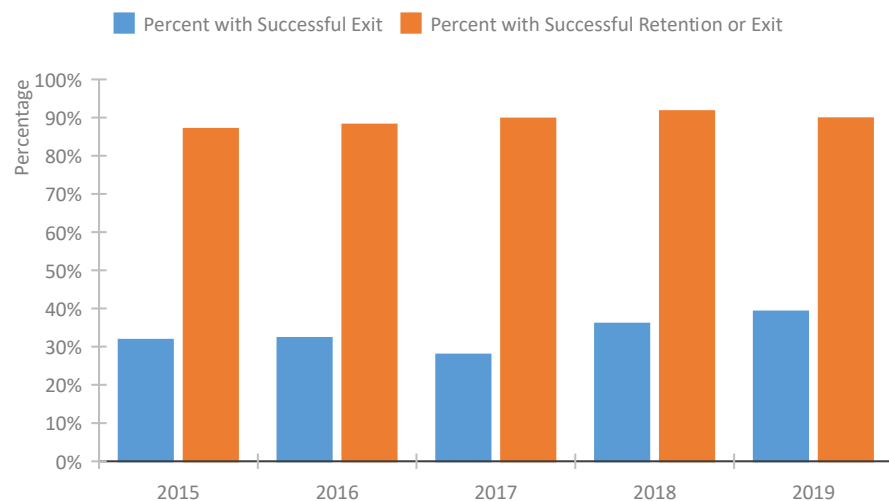


Homeless Population – Point-in-Time (PIT) Count

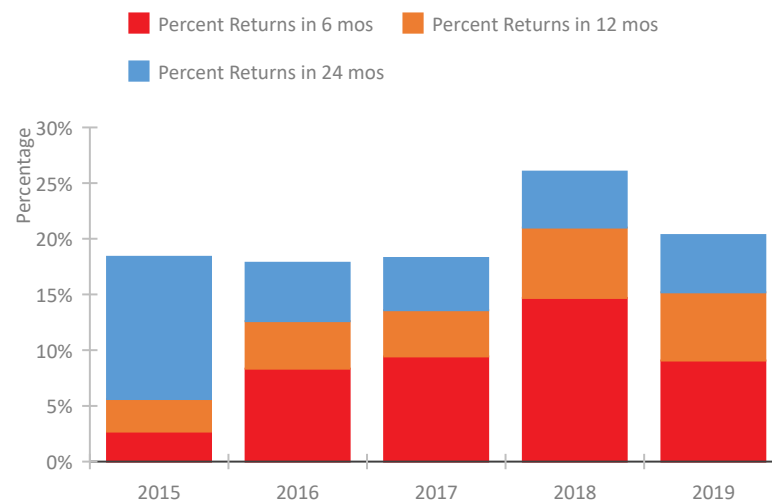


North Dakota Continuum of Care Performance Profile

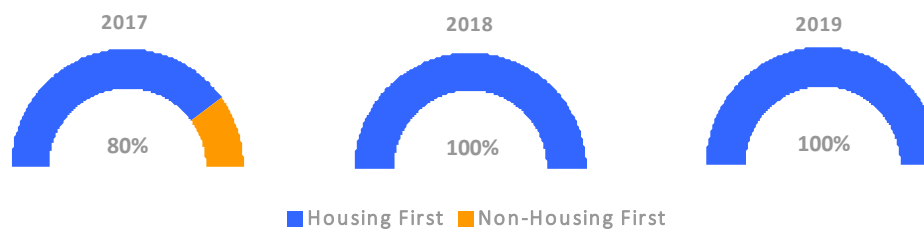
Exits to Permanent Housing by Program Type



Returns to Homelessness Over Time



Proportion of Housing First Projects by Year



Number of Projects by Year

	2017	2018	2019
Housing First Projects	16	1	18
Non-Housing First Projects	4	-1	0

Data Summary: North Dakota

Point-In-Time Count Summary

	2015	2016	2017	2018	2019	2018-19 Change	% Change
Number of Sheltered Persons in Families	228	198	108	75	171	96	128%
Number of Unsheltered Persons in Families	213	63	149	0	9	9	100%
Number of Sheltered Individuals	591	509	650	419	374	-45	-11%
Number of Unsheltered Individuals	273	153	182	48	3	-45	-94%
Total Homeless Persons	1,305	923	1,089	542	557	15	3%
Number of Sheltered Families	71	58	36	27	48	21	78%
Number of Unsheltered Families	52	12	41	0	3	3	100%
Number of Total Families	123	70	77	27	51	24	89%
Sheltered Chronically Homeless Individuals	52	41	25	69	73	4	6%
Unsheltered Chronically Homeless Individuals	18	48	12	0	0	0	--
Total Chronically Homeless Individuals	70	89	37	69	73	4	6%
Sheltered Veterans	90	63	58	9	49	40	444%
Unsheltered Veterans	47	53	16	0	0	0	--
Total Veterans	137	116	74	9	49	40	444%
Sheltered Unaccompanied Youth (up to 24)	113	61	66	58	72	14	24%
Unsheltered Unaccompanied Youth (up to 24)	29	13	14	7	0	-7	-100%
Total Unaccompanied Youth (up to 24)	142	74	80	65	72	7	11%

System Performance Measures Summary

	2015	2016	2017	2018	2019	2018-19 Change	% Change
Rate People Return to Homelessness in 6 Months	2.7%	8.3%	9.4%	14.7%	9.1%	-5.6%	N/A
Number of People who are Homeless for the First Time	2,790	2,184	2,072	2,021	1,566	-455	-22.5%
Rate People Exit from ES, SH, TH, and RRH to PH	31.8%	32.3%	27.9%	36.0%	39.2%	3.2%	N/A
Rate People in PSH and OPH Retain or Exit to PH	87.0%	88.1%	89.7%	91.7%	89.8%	-1.9%	N/A

Housing Inventory Count Summary

	2015	2016	2017	2018	2019	2018-19 Change	% Change
Emergency Shelter (ES)	770	744	896	455	580	125	27%
Safe Haven (SH)	--	--	--	10	33	23	230%
Transitional Housing (TH)	196	236	138	261	141	-120	-46%
Permanent Supportive Housing (PSH)	746	575	630	517	516	-1	0%
Rapid Re-Housing (RRH)	16	71	71	76	123	47	62%
Other Permanent Housing (OPH)	--	158	--	10	103	93	930%

Award Summary

	2015	2016	2017	2018	2019	2018-19 Change	% Change
Continuum of Care (CoC)	\$2,047,642	\$1,903,991	\$1,816,359	\$1,876,781	\$2,058,043	\$181,262	10%
Emergency Solutions Grants (ESG)	\$445,841	\$442,064	\$657,162	\$446,900	\$465,045	\$18,145	4%