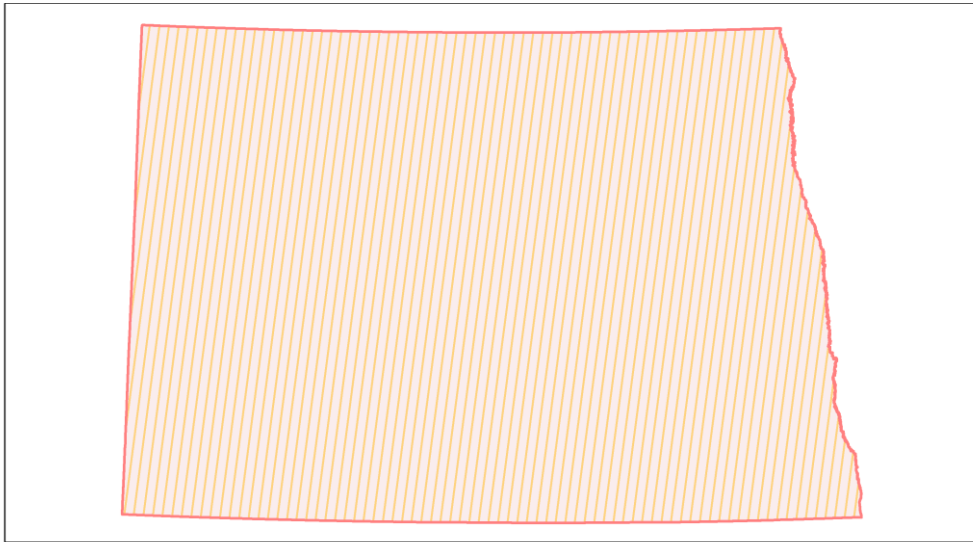
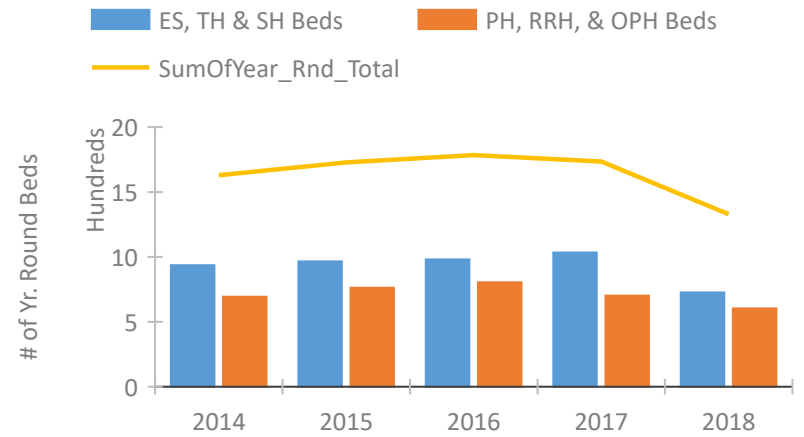


North Dakota Continuum of Care Performance Profile

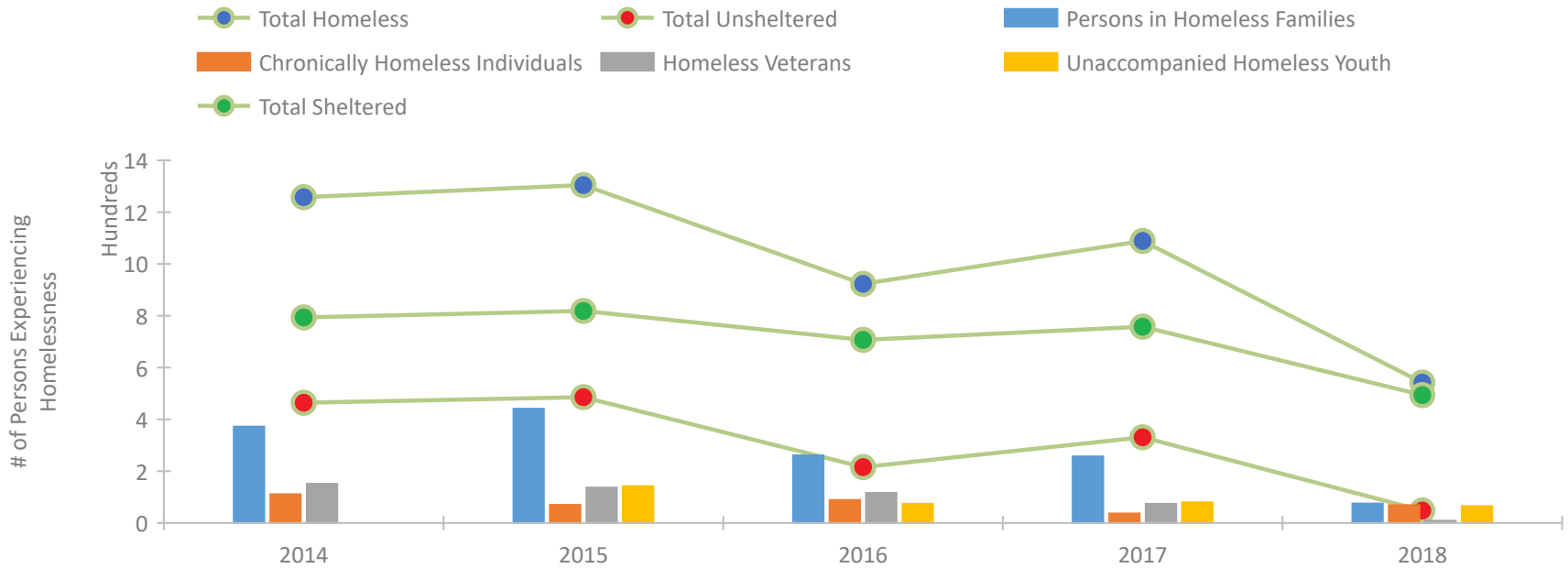


2018 CoC Boundaries 2017 CoC Boundaries

Housing Inventory Count by Program Type

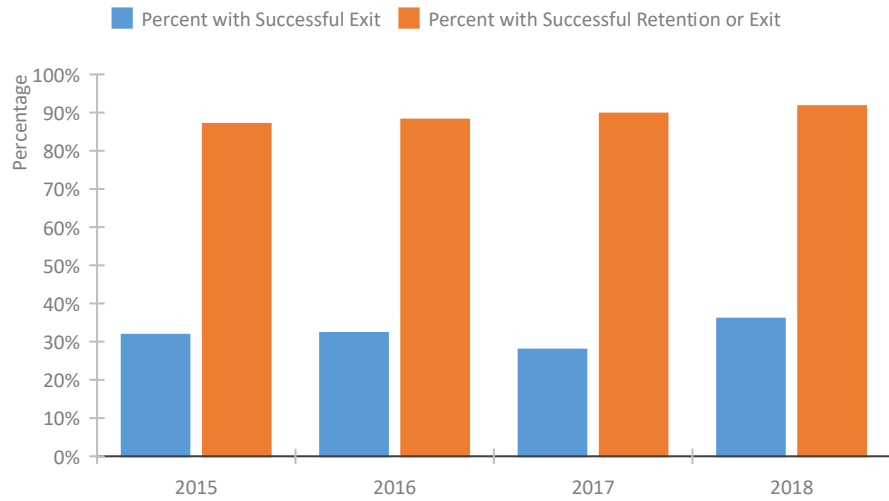


Homeless Population – Point-in-Time (PIT) Count

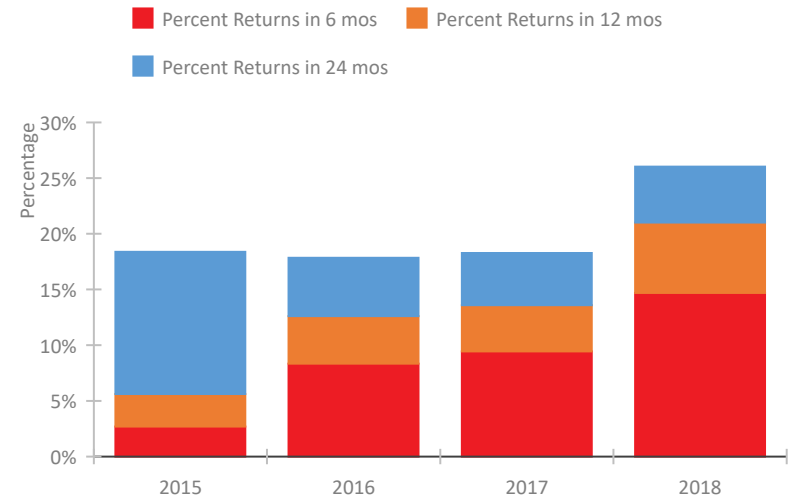


North Dakota Continuum of Care Performance Profile

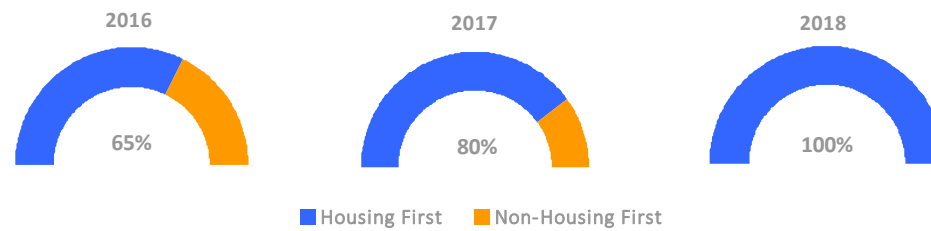
Exits to Permanent Housing by Program Type



Returns to Homelessness Over Time



Proportion of Housing First Projects by Year



Number of Projects by Year

	2016	2017	2018
Housing First Projects	11	16	1
Non-Housing First Projects	6	4	-1

Data Summary: North Dakota

Point-In-Time Count Summary

	2014	2015	2016	2017	2018	2017-18 Change	% Change
Number of Sheltered Persons in Families	268	228	198	108	75	-33	-31%
Number of Unsheltered Persons in Families	104	213	63	149	0	-149	-100%
Number of Sheltered Individuals	523	574	499	633	406	-227	-36%
Number of Unsheltered Individuals	360	269	153	182	48	-134	-74%
Total Homeless Persons	1,255	1,284	913	1,072	529	-543	-51%
Number of Sheltered Families	88	71	58	36	27	-9	-25%
Number of Unsheltered Families	32	52	12	41	0	-41	-100%
Number of Total Families	120	123	70	77	27	-50	-65%
Sheltered Chronically Homeless Individuals	97	52	41	25	69	44	176%
Unsheltered Chronically Homeless Individuals	14	18	48	12	0	-12	-100%
Total Chronically Homeless Individuals	111	70	89	37	69	32	86%
Sheltered Veterans	117	90	63	58	9	-49	-84%
Unsheltered Veterans	34	47	53	16	0	-16	-100%
Total Veterans	151	137	116	74	9	-65	-88%
Sheltered Unaccompanied Youth (up to 24)	--	113	61	66	58	-8	-12%
Unsheltered Unaccompanied Youth (up to 24)	--	29	13	14	7	-7	-50%
Total Unaccompanied Youth (up to 24)	--	142	74	80	65	-15	-19%

System Performance Measures Summary

	2014	2015	2016	2017	2018	2017-18 Change	% Change
Rate People Return to Homelessness in 6 Months	N/A	2.7%	8.3%	9.4%	14.7%	5.3%	N/A
Number of People who are Homeless for the First Time	N/A	2,790	2,184	2,072	2,021	-51	-2.5%
Rate People Exit from ES, SH, TH, and RRH to PH	N/A	31.8%	32.3%	27.9%	36.0%	8.1%	N/A
Rate People in PSH and OPH Retain or Exit to PH	N/A	87.0%	88.1%	89.7%	91.7%	2%	N/A

Housing Inventory Count Summary

	2014	2015	2016	2017	2018	2017-18 Change	% Change
Emergency Shelter (ES)	736	770	744	896	455	-441	-49%
Safe Haven (SH)	--	--	--	--	10	--	--
Transitional Housing (TH)	200	196	236	138	261	123	89%
Permanent Supportive Housing (PSH)	650	746	575	630	517	-113	-18%
Rapid Re-Housing (RRH)	43	16	71	71	76	5	7%
Other Permanent Housing (OPH)	--	--	158	--	10	--	--

Award Summary

	2014	2015	2016	2017	2018	2017-18 Change	% Change
Continuum of Care (CoC)	\$2,173,491	\$2,047,642	\$1,903,991	\$1,816,359	\$1,876,781	\$60,422	3%
Emergency Solutions Grants (ESG)	\$416,114	\$445,841	\$442,064	\$657,162	\$446,900	(\$210,262)	-32%