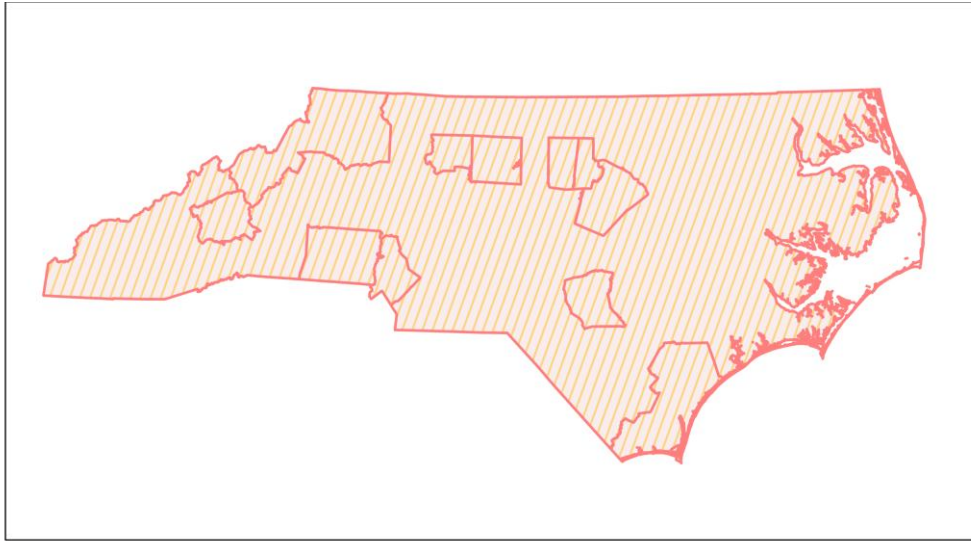
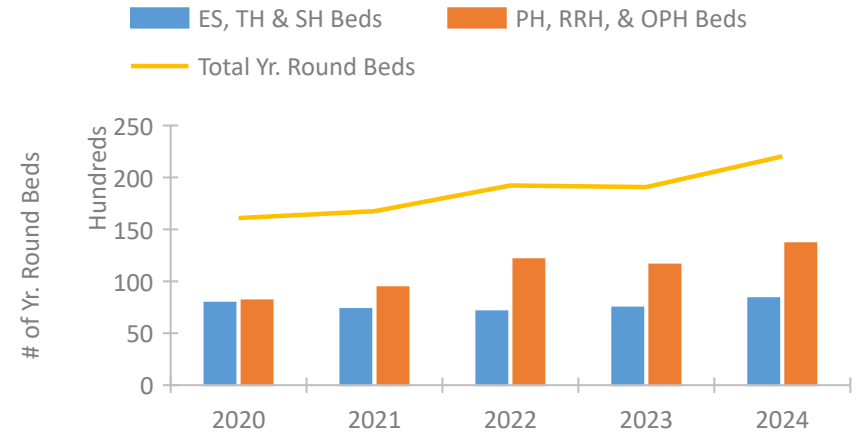


## North Carolina Continuum of Care Performance Profile

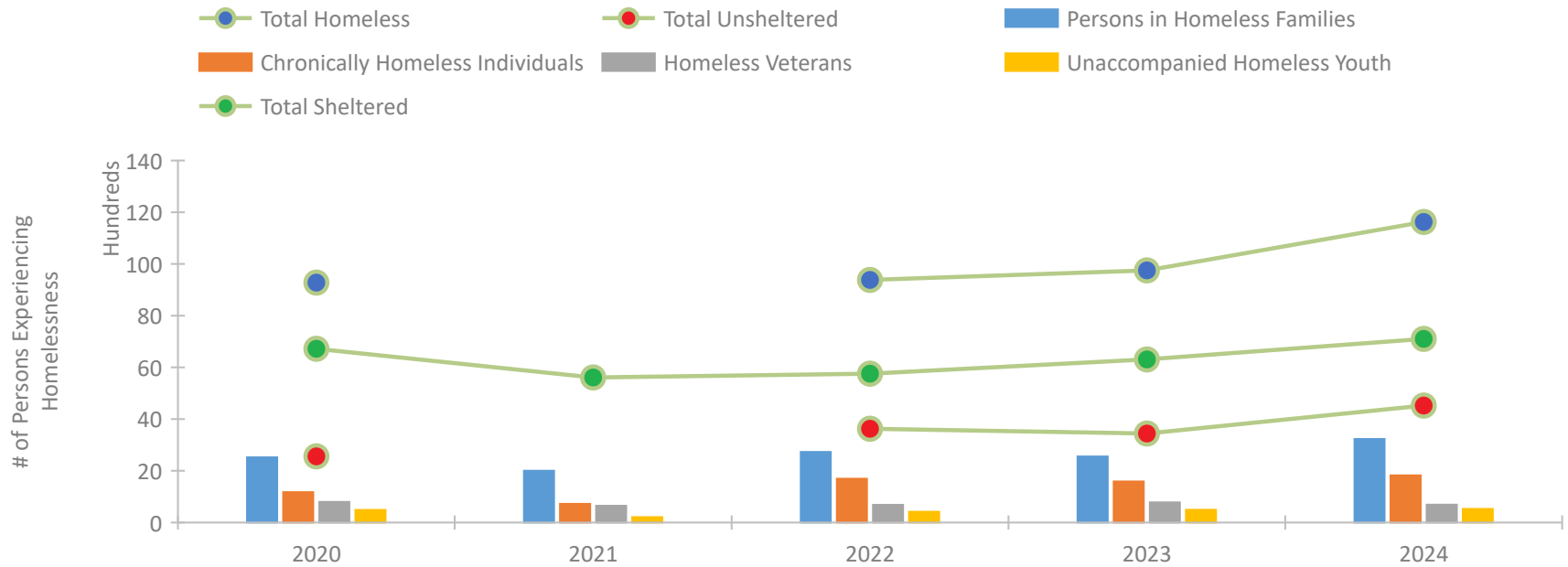


2024 CoC Boundaries / 2023 CoC Boundaries

### Housing Inventory Count by Program Type



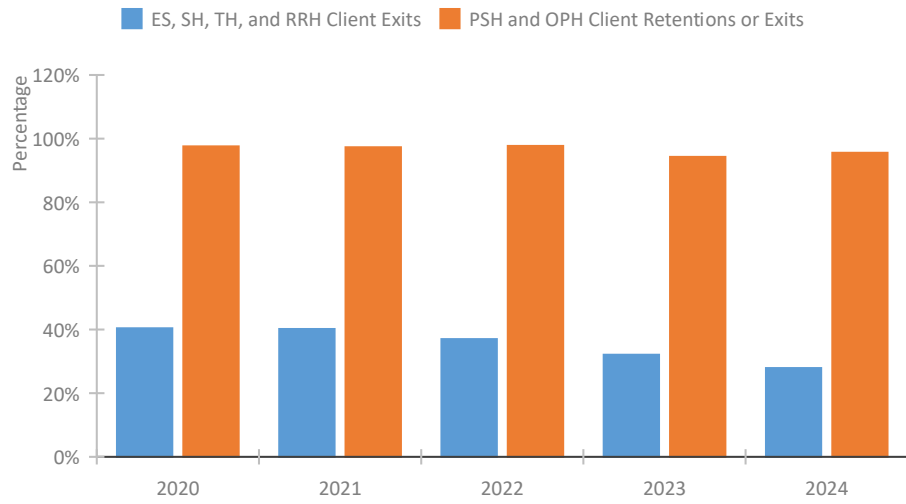
### Homeless Population – Point-in-Time (PIT) Count\*



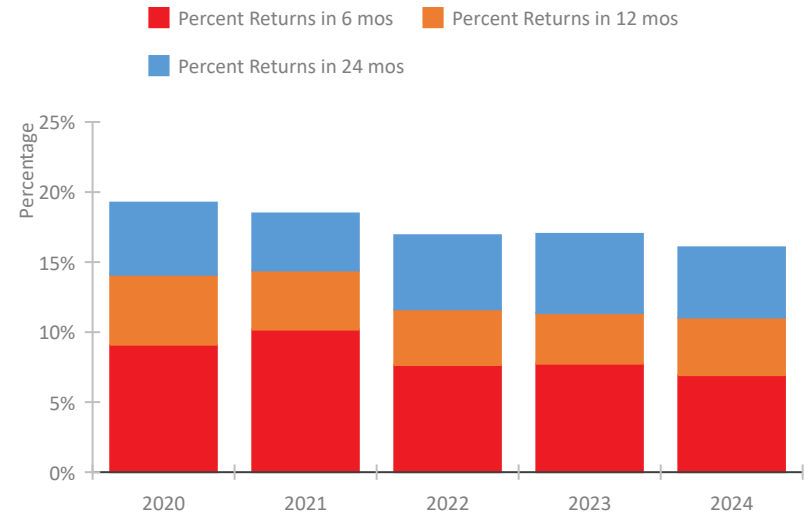
\*In 2021, HUD gave communities the option to cancel or modify the unsheltered survey portion of their counts based on the potential risk of COVID-19 transmission associated with conducting an in-person survey. As a result, HUD has excluded the unsheltered population sub-totals and all unsheltered sub-population data for this reporting period. The user is cautioned that the unsheltered and total homeless counts reported here may be missing data.

# North Carolina Continuum of Care Performance Profile

## Exits to Permanent Housing by Program Type



## Returns to Homelessness Over Time



## Data Summary: North Carolina

### Point-In-Time Count Summary\*

	2020	2021	2022	2023	2024	2023-24 Change	% Change
Number of Sheltered Persons in Families	2,310	2,003	1,936	2,241	2,614	373	17%
Number of Unsheltered Persons in Families	214	--	794	313	616	303	97%
Number of Sheltered Individuals	4,412	3,609	3,821	4,070	4,489	419	10%
Number of Unsheltered Individuals	2,344	--	2,831	3,130	3,907	777	25%
<b>Total Homeless Persons</b>	<b>9,280</b>	<b>5,612</b>	<b>9,382</b>	<b>9,754</b>	<b>11,626</b>	<b>1,872</b>	<b>19%</b>
Number of Sheltered Families	737	613	611	699	795	96	14%
Number of Unsheltered Families	72	--	244	94	169	75	80%
<b>Number of Total Families</b>	<b>809</b>	<b>613</b>	<b>855</b>	<b>793</b>	<b>964</b>	<b>171</b>	<b>22%</b>
Sheltered Chronically Homeless Individuals	652	723	820	755	790	35	5%
Unsheltered Chronically Homeless Individuals	522	--	877	831	1,034	203	24%
<b>Total Chronically Homeless Individuals</b>	<b>1,174</b>	<b>723</b>	<b>1,697</b>	<b>1,586</b>	<b>1,824</b>	<b>238</b>	<b>15%</b>
Sheltered Veterans	669	646	549	626	530	-96	-15%
Unsheltered Veterans	129	--	138	151	158	7	5%
<b>Total Veterans</b>	<b>798</b>	<b>646</b>	<b>687</b>	<b>777</b>	<b>688</b>	<b>-89</b>	<b>-11%</b>
Sheltered Unaccompanied Youth (up to 24)	325	207	234	297	327	30	10%
Unsheltered Unaccompanied Youth (up to 24)	160	--	181	194	197	3	2%
<b>Total Unaccompanied Youth (up to 24)</b>	<b>485</b>	<b>207</b>	<b>415</b>	<b>491</b>	<b>524</b>	<b>33</b>	<b>7%</b>

### System Performance Measures Summary

	2020	2021	2022	2023	2024	2023-24 Change	% Change
Rate People Return to Homelessness in 6 Months	9.1%	10.2%	7.7%	7.7%	6.9%	-0.8%	N/A
Number of People who are Homeless for the First Time	13,983	15,131	15,866	17,987	19,125	1,138	6.3%
Rate People Exit from ES, SH, TH, and RRH to PH	40.4%	40.2%	37.0%	32.1%	27.9%	-4.2%	N/A
Rate People in PSH and OPH Retain or Exit to PH	97.6%	97.3%	97.7%	94.2%	95.5%	1.3%	N/A

### Housing Inventory Count Summary

	2020	2021	2022	2023	2024	2023-24 Change	% Change
Emergency Shelter (ES)	5,932	5,655	5,358	5,850	6,539	689	12%
Safe Haven (SH)	20	36	36	16	26	10	62%
Transitional Housing (TH)	1,976	1,636	1,714	1,604	1,803	199	12%
Permanent Supportive Housing (PSH)	6,174	6,184	6,357	6,163	8,025	1,862	30%
Rapid Re-Housing (RRH)	1,606	2,875	3,885	2,468	2,703	235	10%
Other Permanent Housing (OPH)	387	361	1,885	2,981	2,943	-38	-1%

### Award Summary

	2020	2021	2022	2023	2024	2023-24 Change	% Change
<b>Continuum of Care (CoC)</b>	\$29,929,994	\$34,557,106	\$37,105,325	\$39,761,726	\$46,054,464	\$6,292,738	16%
<b>Emergency Solutions Grants (ESG)</b>	\$6,874,346	\$6,835,965	\$6,843,150	\$6,836,325	\$6,819,534	(\$16,791)	0%

\*In 2021, HUD gave communities the option to cancel or modify the unsheltered survey portion of their counts based on the potential risk of COVID-19 transmission associated with conducting an in-person survey. As a result, HUD has excluded the unsheltered population sub-totals and all unsheltered sub-population data for this reporting period. The user is cautioned that the unsheltered and total homeless counts reported here may be missing data.