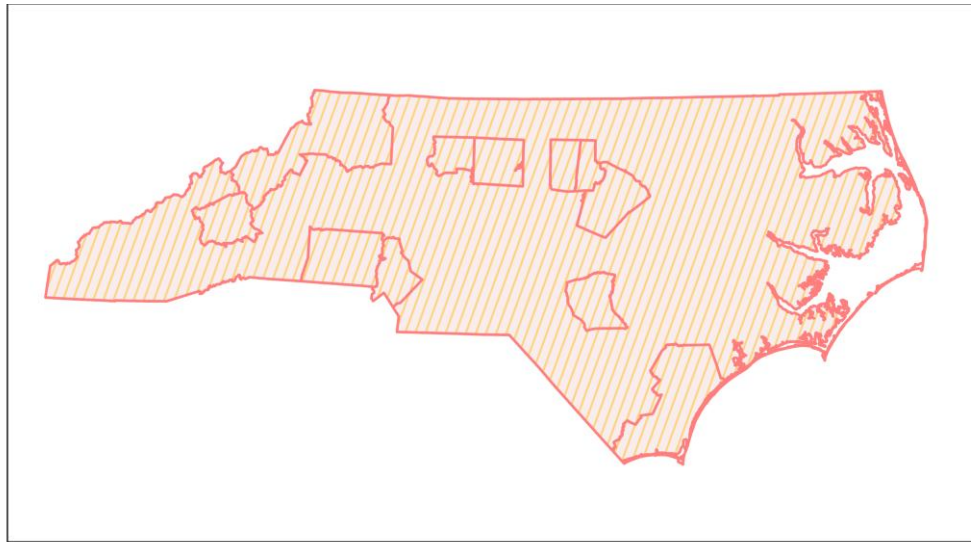
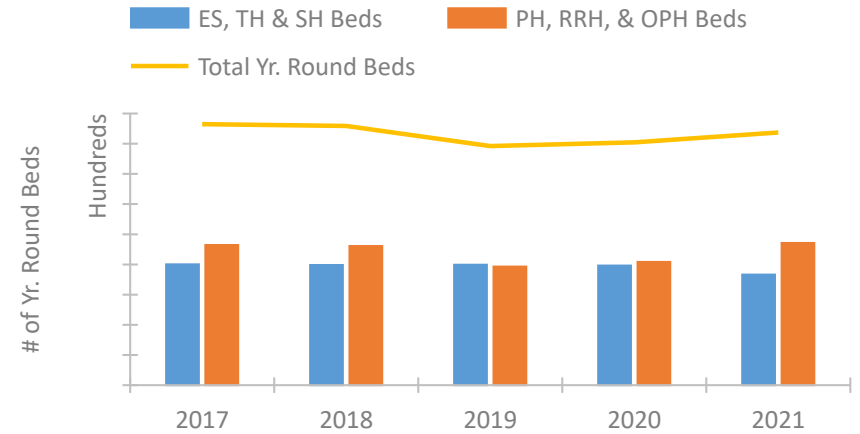


North Carolina Continuum of Care Performance Profile

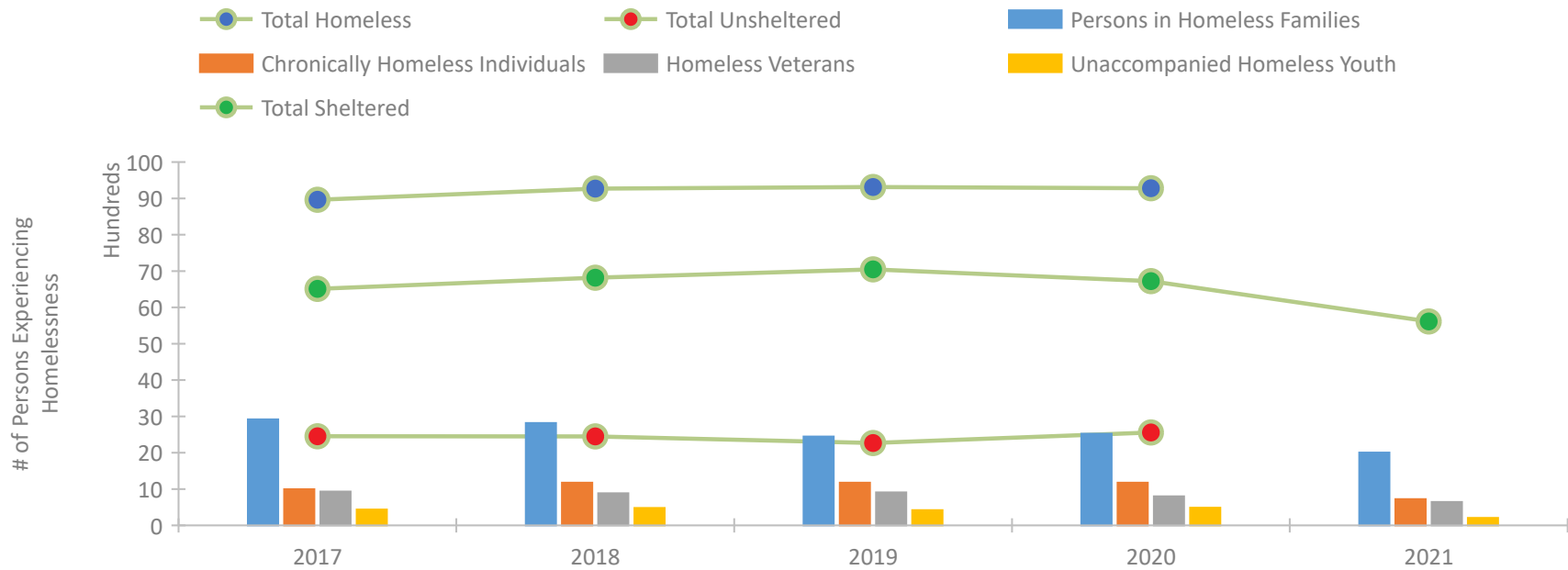


2021 CoC Boundaries 2020 CoC Boundaries

Housing Inventory Count by Program Type



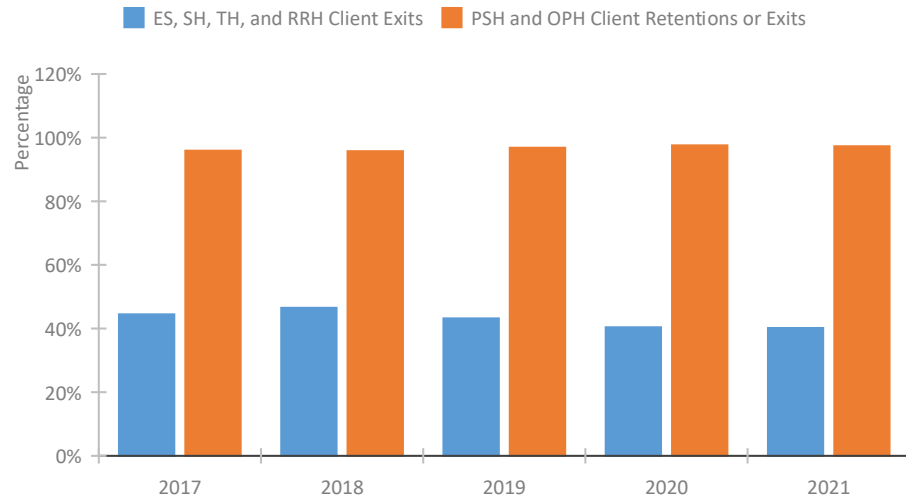
Homeless Population – Point-in-Time (PIT) Count*



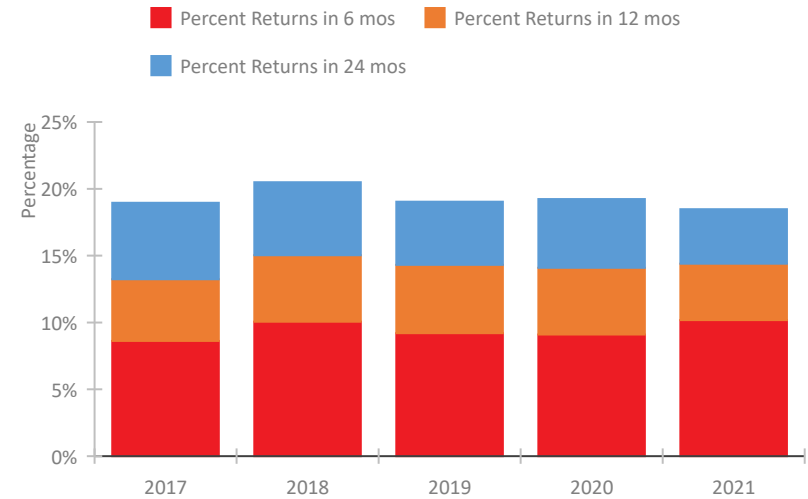
*In 2021, HUD gave communities the option to cancel or modify the unsheltered survey portion of their counts based on the potential risk of COVID-19 transmission associated with conducting an in-person survey. As a result, HUD has excluded the unsheltered population sub-totals and all unsheltered sub-population data for this reporting period. The user is cautioned that the unsheltered and total homeless counts reported here may be missing data.

North Carolina Continuum of Care Performance Profile

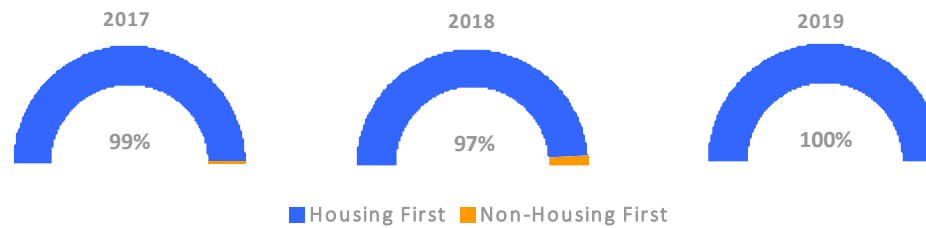
Exits to Permanent Housing by Program Type



Returns to Homelessness Over Time



Proportion of Housing First Projects by Year†



Number of Projects by Year

	2017	2018	2019
Housing First Projects	143	136	136
Non-Housing First Projects	1	4	0

†2021 Data unavailable at the time of report publication. In 2020 HUD awarded renewal projects noncompetitively, therefore no new data was collected and Housing First data remains the same from 2019 to 2020.

Data Summary: North Carolina

Point-In-Time Count Summary*

	2017	2018	2019	2020	2021	2020-21 Change	% Change
Number of Sheltered Persons in Families	2,382	2,297	2,157	2,310	2,003	-307	-13%
Number of Unsheltered Persons in Families	536	520	290	214	0	-214	-100%
Number of Sheltered Individuals	4,129	4,521	4,889	4,412	3,609	-803	-18%
Number of Unsheltered Individuals	1,915	1,930	1,978	2,344	--	--	--
Total Homeless Persons	8,962	9,268	9,314	9,280	5,612	-3,668	-40%
Number of Sheltered Families	748	725	682	737	613	-124	-17%
Number of Unsheltered Families	163	172	85	72	--	--	--
Number of Total Families	911	897	767	809	613	-196	-24%
Sheltered Chronically Homeless Individuals	359	674	647	652	723	71	11%
Unsheltered Chronically Homeless Individuals	635	501	526	522	--	--	--
Total Chronically Homeless Individuals	994	1,175	1,173	1,174	723	-451	-38%
Sheltered Veterans	732	735	763	669	646	-23	-3%
Unsheltered Veterans	199	149	144	129	--	--	--
Total Veterans	931	884	907	798	646	-152	-19%
Sheltered Unaccompanied Youth (up to 24)	320	334	317	325	207	-118	-36%
Unsheltered Unaccompanied Youth (up to 24)	114	144	100	160	--	--	--
Total Unaccompanied Youth (up to 24)	434	478	417	485	207	-278	-57%

System Performance Measures Summary

	2017	2018	2019	2020	2021	2020-21 Change	% Change
Rate People Return to Homelessness in 6 Months	8.6%	10.1%	9.2%	9.1%	10.2%	1.1%	N/A
Number of People who are Homeless for the First Time	19,254	18,821	16,831	13,983	15,131	1,148	8.2%
Rate People Exit from ES, SH, TH, and RRH to PH	44.5%	46.5%	43.2%	40.4%	40.2%	-0.2%	N/A
Rate People in PSH and OPH Retain or Exit to PH	95.9%	95.7%	96.8%	97.6%	97.3%	-0.3%	N/A

Housing Inventory Count Summary

	2017	2018	2019	2020	2021	2020-21 Change	% Change
Emergency Shelter (ES)	5,881	5,965	5,994	5,932	5,655	-277	-5%
Safe Haven (SH)	--	--	--	20	36	16	80%
Transitional Housing (TH)	2,121	1,998	1,989	1,976	1,636	-340	-17%
Permanent Supportive Housing (PSH)	6,624	6,439	5,798	6,174	6,184	10	0%
Rapid Re-Housing (RRH)	2,415	2,392	1,673	1,606	2,875	1,269	79%
Other Permanent Housing (OPH)	252	383	387	387	361	-26	-7%

Award Summary

	2017	2018	2019	2020	2021	2020-21 Change	% Change
Continuum of Care (CoC)	\$25,577,229	\$26,157,577	\$27,747,803	\$29,929,994	\$34,557,106	\$4,627,112	15%
Emergency Solutions Grants (ESG)	\$6,760,674	\$6,401,356	\$6,682,300	\$6,874,346	\$6,835,965	(\$38,381)	-1%

*In 2021, HUD gave communities the option to cancel or modify the unsheltered survey portion of their counts based on the potential risk of COVID-19 transmission associated with conducting an in-person survey. As a result, HUD has excluded the unsheltered population sub-totals and all unsheltered sub-population data for this reporting period. The user is cautioned that the unsheltered and total homeless counts reported here may be missing data.