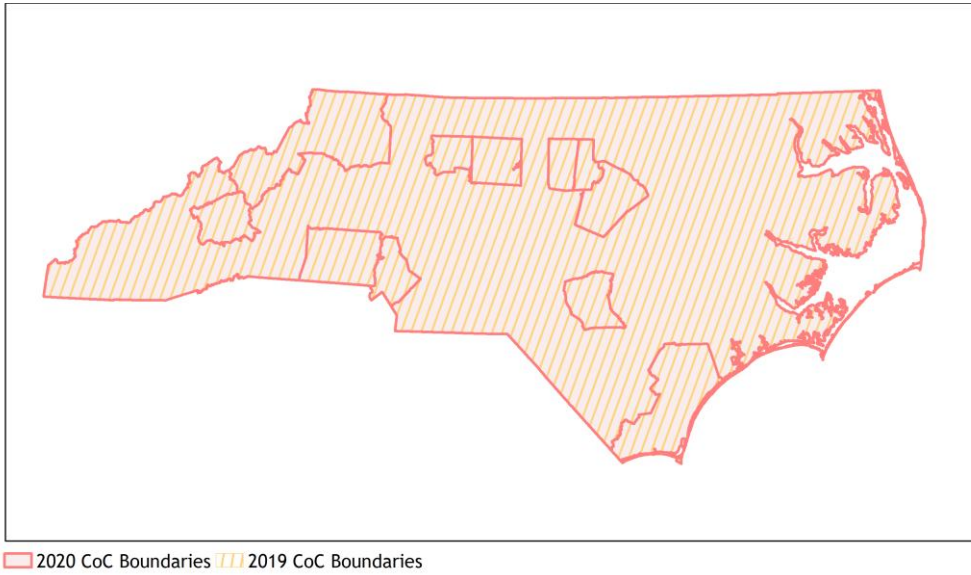
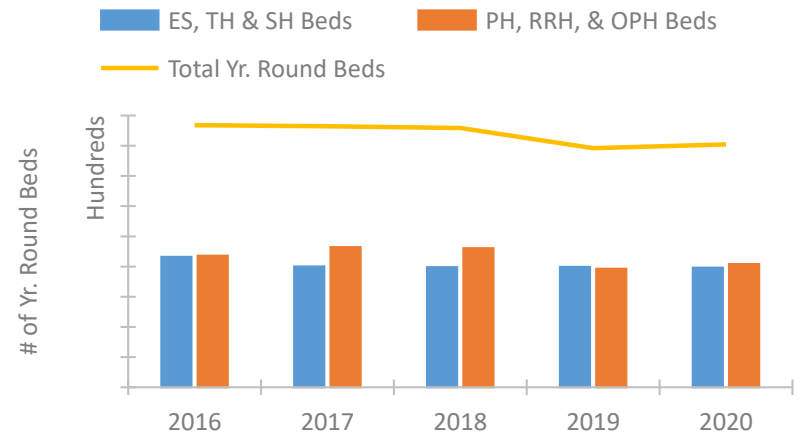


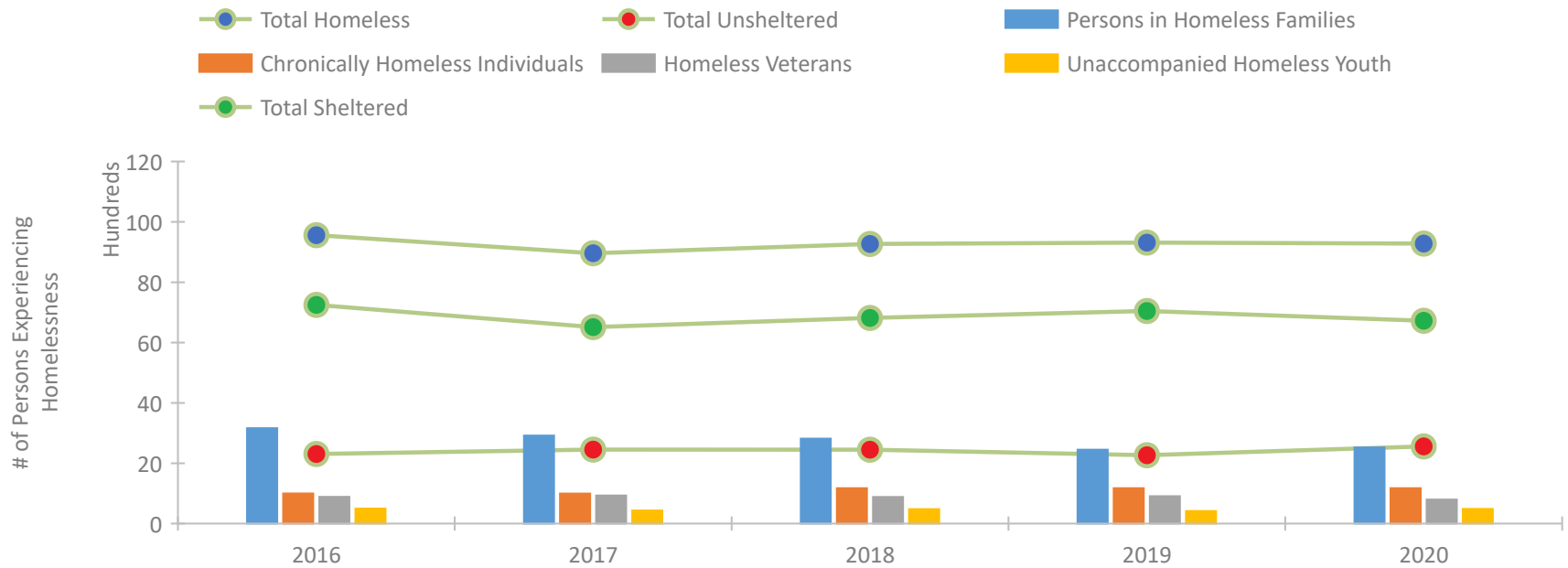
North Carolina Continuum of Care Performance Profile



Housing Inventory Count by Program Type



Homeless Population – Point-in-Time (PIT) Count

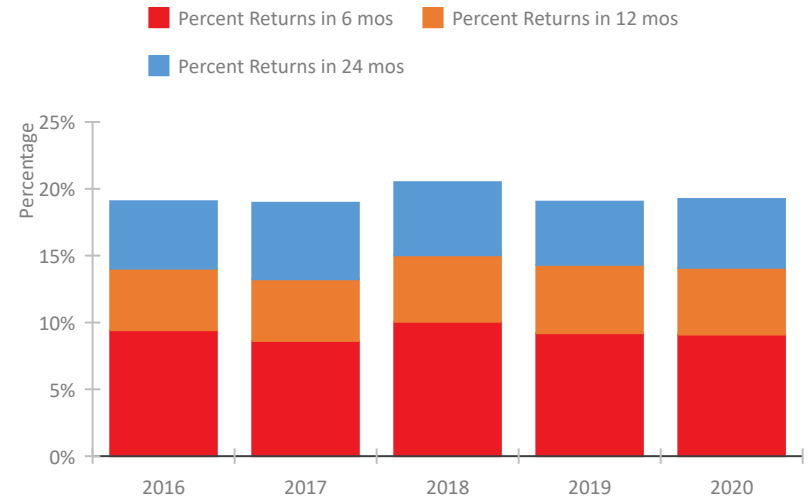


North Carolina Continuum of Care Performance Profile

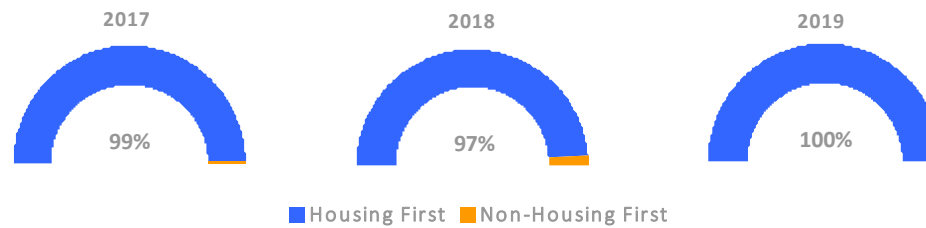
Exits to Permanent Housing by Program Type



Returns to Homelessness Over Time



Proportion of Housing First Projects by Year*



Number of Projects by Year			
	2017	2018	2019
Housing First Projects	143	136	136
Non-Housing First Projects	1	4	0

*In 2020 HUD awarded renewal projects noncompetitively, therefore no new data was collected and Housing First data remains the same from 2019 to 2020.

Data Summary: North Carolina

Point-In-Time Count Summary

	2016	2017	2018	2019	2020	2019-20 Change	% Change
Number of Sheltered Persons in Families	2,568	2,382	2,297	2,157	2,310	153	7%
Number of Unsheltered Persons in Families	595	536	520	290	214	-76	-26%
Number of Sheltered Individuals	4,682	4,129	4,521	4,889	4,412	-477	-10%
Number of Unsheltered Individuals	1,714	1,915	1,930	1,978	2,344	366	19%
Total Homeless Persons	9,559	8,962	9,268	9,314	9,280	-34	-0%
Number of Sheltered Families	845	748	725	682	737	55	8%
Number of Unsheltered Families	196	163	172	85	72	-13	-15%
Number of Total Families	1,041	911	897	767	809	42	5%
Sheltered Chronically Homeless Individuals	527	359	674	647	652	5	1%
Unsheltered Chronically Homeless Individuals	472	635	501	526	522	-4	-1%
Total Chronically Homeless Individuals	999	994	1,175	1,173	1,174	1	0%
Sheltered Veterans	730	732	735	763	669	-94	-12%
Unsheltered Veterans	158	199	149	144	129	-15	-10%
Total Veterans	888	931	884	907	798	-109	-12%
Sheltered Unaccompanied Youth (up to 24)	385	320	334	317	325	8	3%
Unsheltered Unaccompanied Youth (up to 24)	112	114	144	100	160	60	60%
Total Unaccompanied Youth (up to 24)	497	434	478	417	485	68	16%

System Performance Measures Summary

	2016	2017	2018	2019	2020	2019-20 Change	% Change
Rate People Return to Homelessness in 6 Months	9.4%	8.6%	10.1%	9.2%	9.1%	-0.1%	N/A
Number of People who are Homeless for the First Time	20,802	19,254	18,821	16,831	13,983	-2,848	-16.9%
Rate People Exit from ES, SH, TH, and RRH to PH	42.7%	44.5%	46.5%	43.2%	40.4%	-2.8%	N/A
Rate People in PSH and OPH Retain or Exit to PH	95.6%	95.9%	95.7%	96.8%	97.6%	0.8%	N/A

Housing Inventory Count Summary

	2016	2017	2018	2019	2020	2019-20 Change	% Change
Emergency Shelter (ES)	6,060	5,881	5,965	5,994	5,932	-62	-1%
Safe Haven (SH)	--	--	--	--	20	--	--
Transitional Housing (TH)	2,581	2,121	1,998	1,989	1,976	-13	-1%
Permanent Supportive Housing (PSH)	6,239	6,624	6,439	5,798	6,174	376	6%
Rapid Re-Housing (RRH)	2,223	2,415	2,392	1,673	1,606	-67	-4%
Other Permanent Housing (OPH)	259	252	383	387	387	0	-0%

Award Summary

	2016	2017	2018	2019	2020	2019-20 Change	% Change
Continuum of Care (CoC)	\$24,797,054	\$25,577,229	\$26,157,577	\$27,747,803	\$29,929,994	\$2,182,191	8%
Emergency Solutions Grants (ESG)	\$6,320,623	\$6,760,674	\$6,401,356	\$6,682,300	\$6,874,346	\$192,046	3%