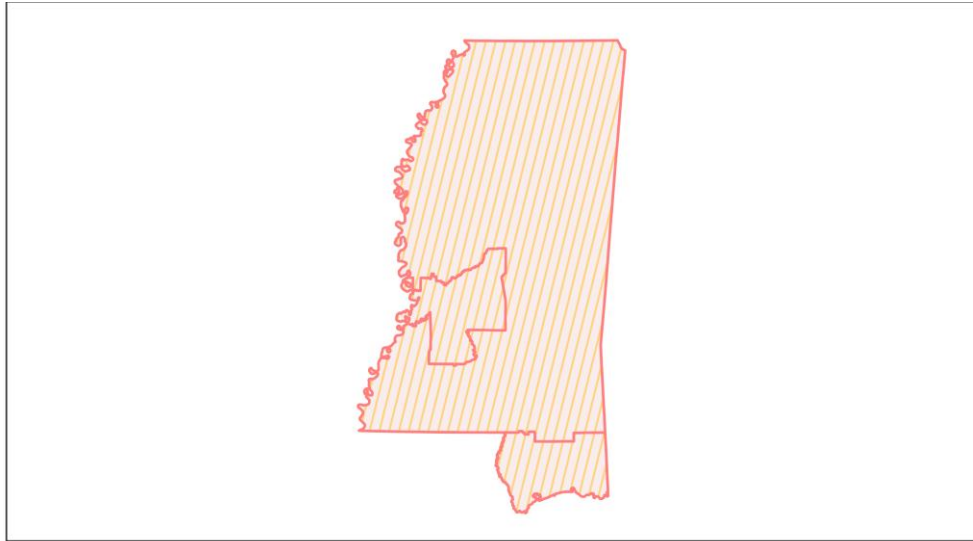
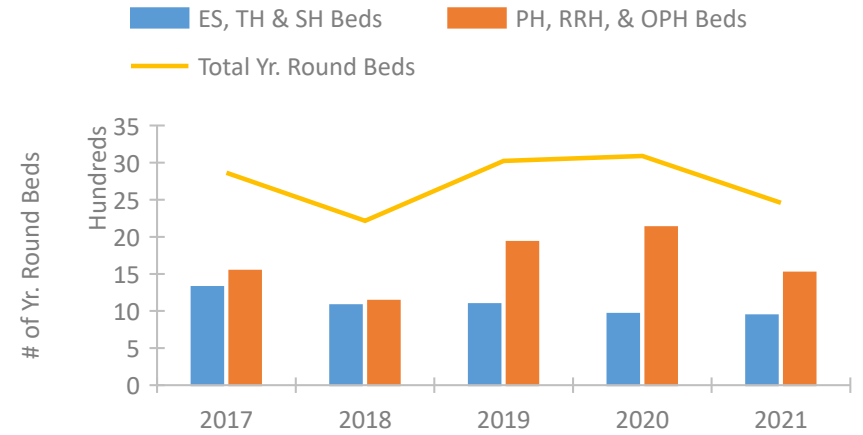


## Mississippi Continuum of Care Performance Profile

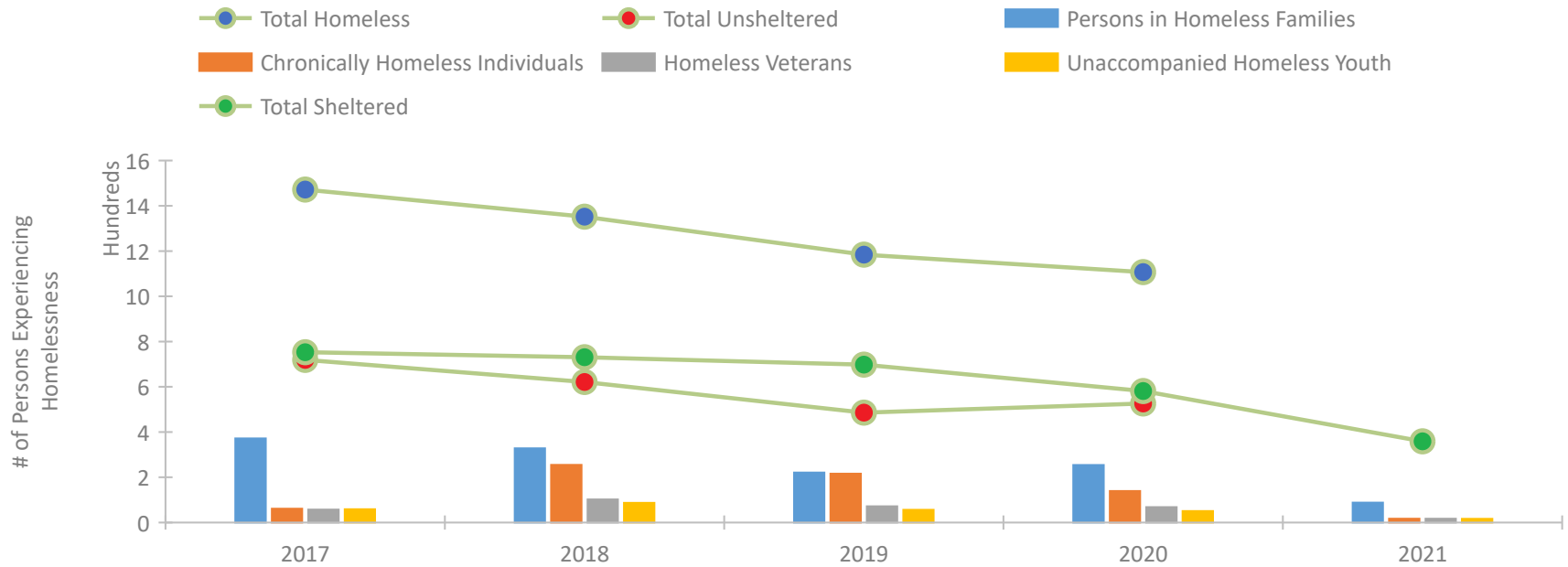


2021 CoC Boundaries 2020 CoC Boundaries

### Housing Inventory Count by Program Type



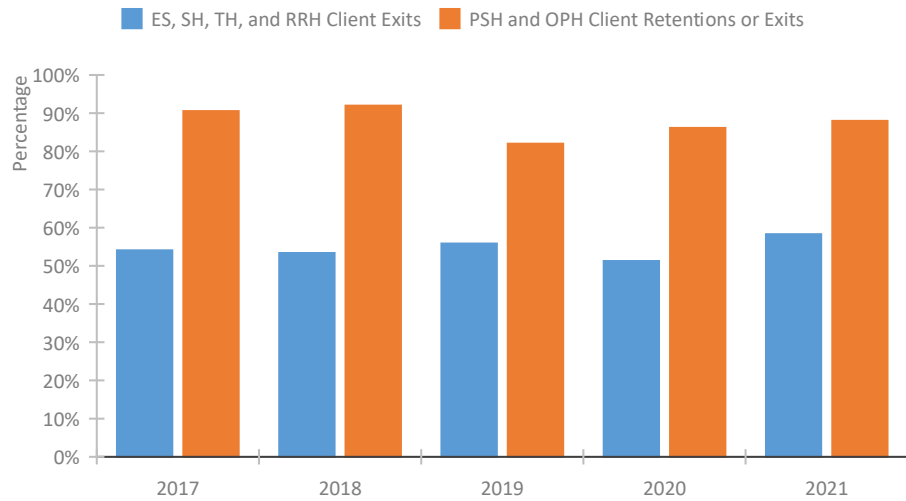
### Homeless Population – Point-in-Time (PIT) Count\*



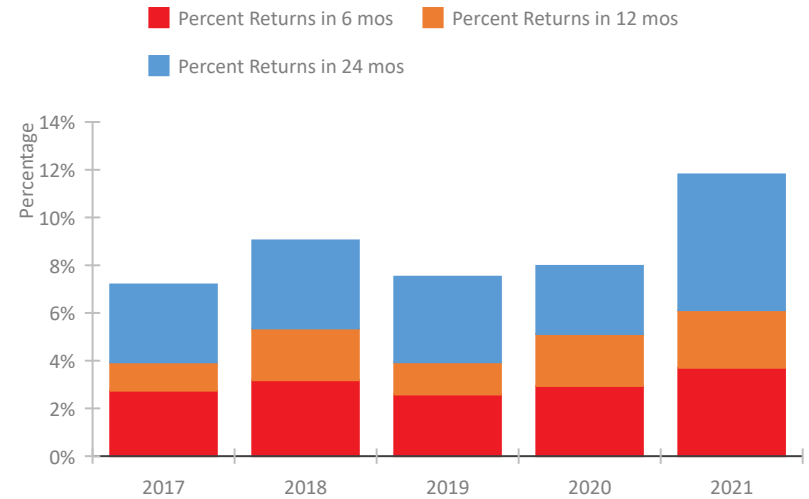
\*In 2021, HUD gave communities the option to cancel or modify the unsheltered survey portion of their counts based on the potential risk of COVID-19 transmission associated with conducting an in-person survey. As a result, HUD has excluded the unsheltered population sub-totals and all unsheltered sub-population data for this reporting period. The user is cautioned that the unsheltered and total homeless counts reported here may be missing data.

## Mississippi Continuum of Care Performance Profile

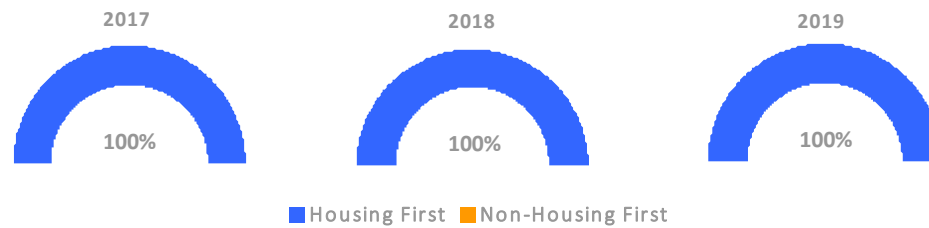
### Exits to Permanent Housing by Program Type



### Returns to Homelessness Over Time



### Proportion of Housing First Projects by Year†



#### Number of Projects by Year

	2017	2018	2019
Housing First Projects	26	25	21
Non-Housing First Projects	0	0	0

†2021 Data unavailable at the time of report publication. In 2020 HUD awarded renewal projects noncompetitively, therefore no new data was collected and Housing First data remains the same from 2019 to 2020.

## Data Summary: Mississippi

### Point-In-Time Count Summary\*

	2017	2018	2019	2020	2021	2020-21 Change	% Change
Number of Sheltered Persons in Families	301	270	219	250	88	-162	-65%
Number of Unsheltered Persons in Families	71	58	2	4	0	-4	-100%
Number of Sheltered Individuals	452	461	479	331	271	-60	-18%
Number of Unsheltered Individuals	648	563	484	522	--	--	--
<b>Total Homeless Persons</b>	<b>1,472</b>	<b>1,352</b>	<b>1,184</b>	<b>1,107</b>	<b>359</b>	<b>-748</b>	<b>-68%</b>
Number of Sheltered Families	90	95	68	75	31	-44	-59%
Number of Unsheltered Families	21	17	1	1	--	--	--
<b>Number of Total Families</b>	<b>111</b>	<b>112</b>	<b>69</b>	<b>76</b>	<b>31</b>	<b>-45</b>	<b>-59%</b>
Sheltered Chronically Homeless Individuals	13	40	64	35	17	-18	-51%
Unsheltered Chronically Homeless Individuals	48	215	152	104	--	--	--
<b>Total Chronically Homeless Individuals</b>	<b>61</b>	<b>255</b>	<b>216</b>	<b>139</b>	<b>17</b>	<b>-122</b>	<b>-88%</b>
Sheltered Veterans	39	37	49	37	17	-20	-54%
Unsheltered Veterans	18	65	23	31	--	--	--
<b>Total Veterans</b>	<b>57</b>	<b>102</b>	<b>72</b>	<b>68</b>	<b>17</b>	<b>-51</b>	<b>-75%</b>
Sheltered Unaccompanied Youth (up to 24)	40	35	36	31	16	-15	-48%
Unsheltered Unaccompanied Youth (up to 24)	19	52	20	20	--	--	--
<b>Total Unaccompanied Youth (up to 24)</b>	<b>59</b>	<b>87</b>	<b>56</b>	<b>51</b>	<b>16</b>	<b>-35</b>	<b>-69%</b>

### System Performance Measures Summary

	2017	2018	2019	2020	2021	2020-21 Change	% Change
Rate People Return to Homelessness in 6 Months	2.7%	3.2%	2.6%	2.9%	3.7%	0.8%	N/A
Number of People who are Homeless for the First Time	4,022	3,550	2,956	2,438	2,421	-17	-0.7%
Rate People Exit from ES, SH, TH, and RRH to PH	54.1%	53.4%	55.8%	51.3%	58.3%	7%	N/A
Rate People in PSH and OPH Retain or Exit to PH	90.5%	92.0%	82.0%	86.1%	88.0%	1.8%	N/A

### Housing Inventory Count Summary

	2017	2018	2019	2020	2021	2020-21 Change	% Change
Emergency Shelter (ES)	842	649	640	538	489	-49	-9%
Transitional Housing (TH)	480	430	453	424	453	29	7%
Permanent Supportive Housing (PSH)	361	343	662	910	474	-436	-48%
Rapid Re-Housing (RRH)	1,181	794	1,171	1,144	995	-149	-13%
Other Permanent Housing (OPH)	--	--	98	75	48	-27	-36%

### Award Summary

	2017	2018	2019	2020	2021	2020-21 Change	% Change
<b>Continuum of Care (CoC)</b>	\$5,026,381	\$5,049,204	\$5,425,404	\$5,553,899	\$6,774,811	\$1,220,912	22%
<b>Emergency Solutions Grants (ESG)</b>	\$2,558,114	\$2,362,844	\$2,440,522	\$2,536,470	\$2,514,716	(\$21,754)	-1%
<b>Youth Homelessness Demonstration Program (YHDP)</b>	--	\$2,054,747	--	--	--	--	--

\*In 2021, HUD gave communities the option to cancel or modify the unsheltered survey portion of their counts based on the potential risk of COVID-19 transmission associated with conducting an in-person survey. As a result, HUD has excluded the unsheltered population sub-totals and all unsheltered sub-population data for this reporting period. The user is cautioned that the unsheltered and total homeless counts reported here may be missing data.