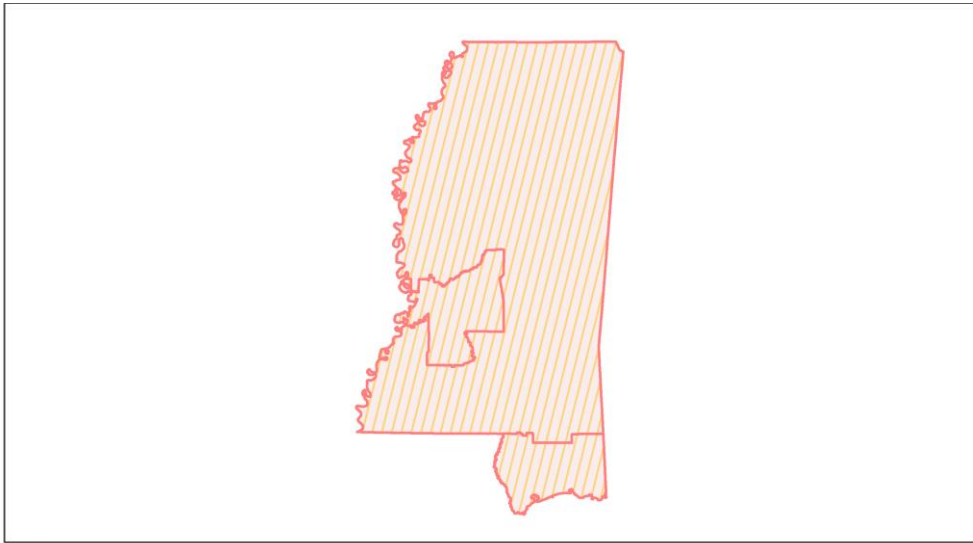
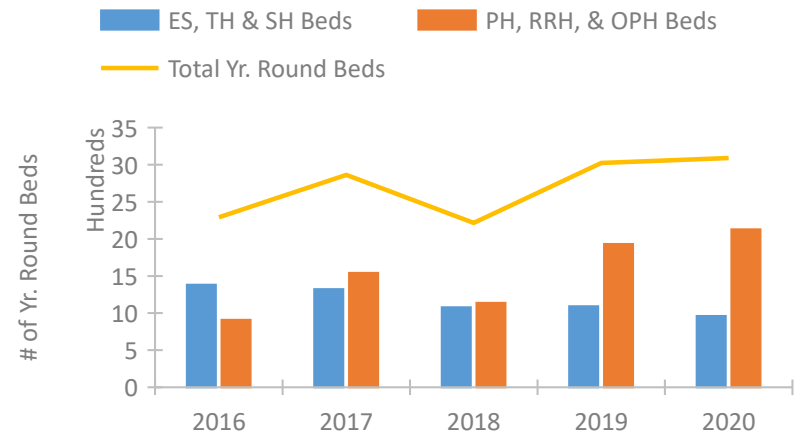


Mississippi Continuum of Care Performance Profile

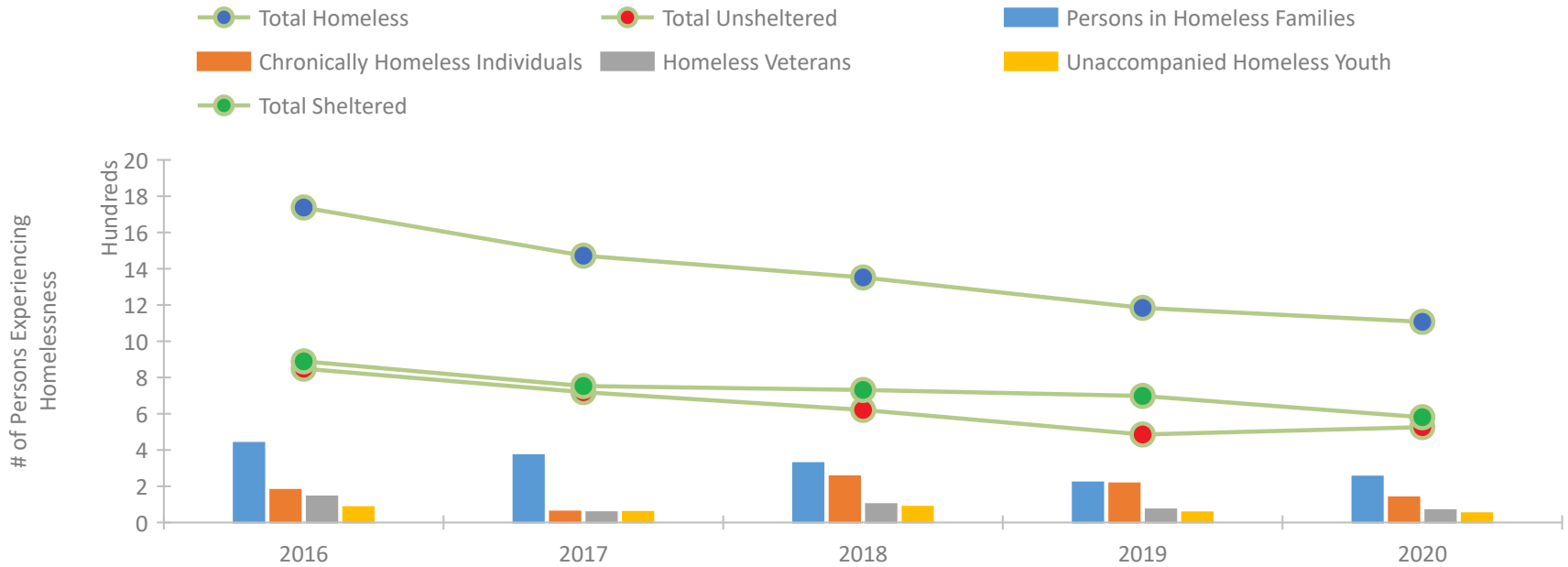


2020 CoC Boundaries 2019 CoC Boundaries

Housing Inventory Count by Program Type

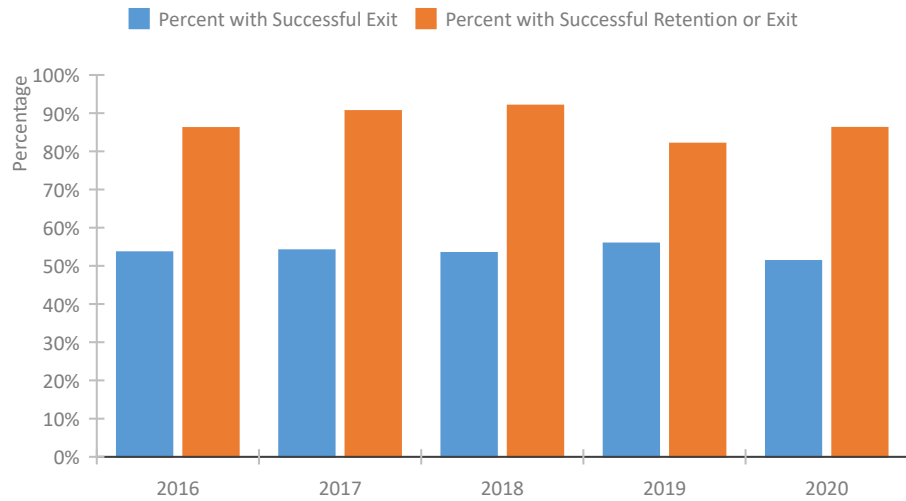


Homeless Population – Point-in-Time (PIT) Count

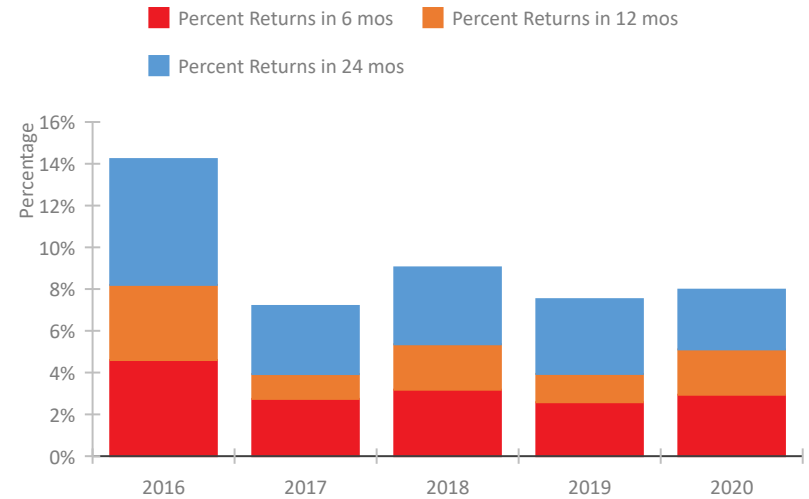


Mississippi Continuum of Care Performance Profile

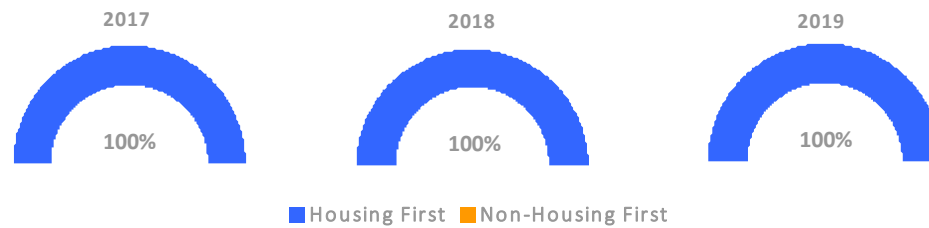
Exits to Permanent Housing by Program Type



Returns to Homelessness Over Time



Proportion of Housing First Projects by Year*



Number of Projects by Year			
	2017	2018	2019
Housing First Projects	26	25	21
Non-Housing First Projects	0	0	0

*In 2020 HUD awarded renewal projects noncompetitively, therefore no new data was collected and Housing First data remains the same from 2019 to 2020.

Data Summary: Mississippi

Point-In-Time Count Summary

	2016	2017	2018	2019	2020	2019-20 Change	% Change
Number of Sheltered Persons in Families	333	301	270	219	250	31	14%
Number of Unsheltered Persons in Families	106	71	58	2	4	2	100%
Number of Sheltered Individuals	556	452	461	479	331	-148	-31%
Number of Unsheltered Individuals	743	648	563	484	522	38	8%
Total Homeless Persons	1,738	1,472	1,352	1,184	1,107	-77	-7%
Number of Sheltered Families	101	90	95	68	75	7	10%
Number of Unsheltered Families	32	21	17	1	1	0	-0%
Number of Total Families	133	111	112	69	76	7	10%
Sheltered Chronically Homeless Individuals	28	13	40	64	35	-29	-45%
Unsheltered Chronically Homeless Individuals	152	48	215	152	104	-48	-32%
Total Chronically Homeless Individuals	180	61	255	216	139	-77	-36%
Sheltered Veterans	58	39	37	49	37	-12	-24%
Unsheltered Veterans	86	18	65	23	31	8	35%
Total Veterans	144	57	102	72	68	-4	-6%
Sheltered Unaccompanied Youth (up to 24)	45	40	35	36	31	-5	-14%
Unsheltered Unaccompanied Youth (up to 24)	40	19	52	20	20	0	-0%
Total Unaccompanied Youth (up to 24)	85	59	87	56	51	-5	-9%

System Performance Measures Summary

	2016	2017	2018	2019	2020	2019-20 Change	% Change
Rate People Return to Homelessness in 6 Months	4.6%	2.7%	3.2%	2.6%	2.9%	0.4%	N/A
Number of People who are Homeless for the First Time	4,093	4,022	3,550	2,956	2,438	-518	-17.5%
Rate People Exit from ES, SH, TH, and RRH to PH	53.5%	54.1%	53.4%	55.8%	51.3%	-4.6%	N/A
Rate People in PSH and OPH Retain or Exit to PH	86.1%	90.5%	92.0%	82.0%	86.1%	4.1%	N/A

Housing Inventory Count Summary

	2016	2017	2018	2019	2020	2019-20 Change	% Change
Emergency Shelter (ES)	723	842	649	640	538	-102	-16%
Transitional Housing (TH)	660	480	430	453	424	-29	-6%
Permanent Supportive Housing (PSH)	334	361	343	662	910	248	37%
Rapid Re-Housing (RRH)	575	1,181	794	1,171	1,144	-27	-2%
Other Permanent Housing (OPH)	--	--	--	98	75	-23	-23%

Award Summary

	2016	2017	2018	2019	2020	2019-20 Change	% Change
Continuum of Care (CoC)	\$5,367,903	\$5,026,381	\$5,049,204	\$5,425,404	\$5,553,899	\$128,495	2%
Emergency Solutions Grants (ESG)	\$2,386,052	\$2,558,114	\$2,362,844	\$2,440,522	\$2,536,470	\$95,948	4%
Youth Homelessness Demonstration Program (YHDP)	--	--	\$2,054,747	--	--	--	--