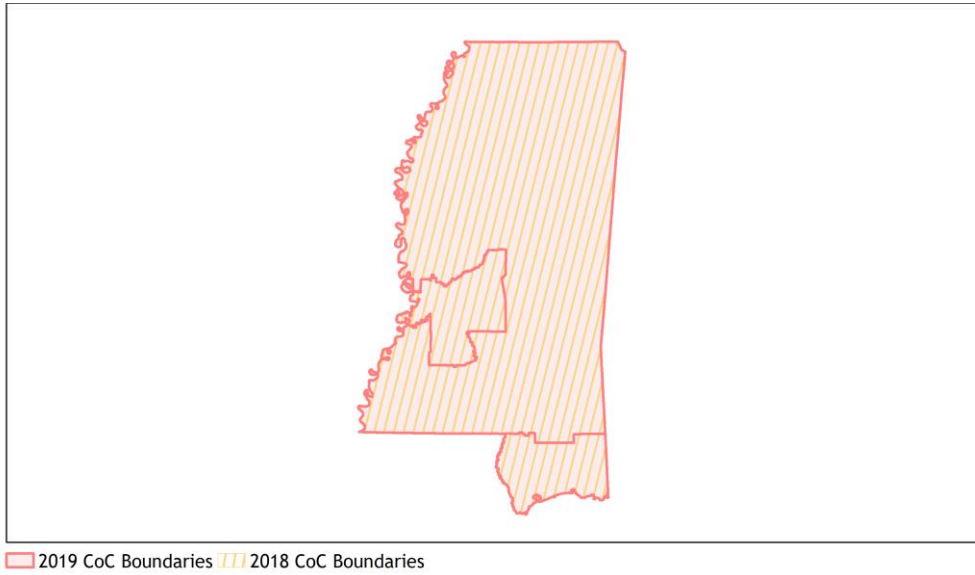
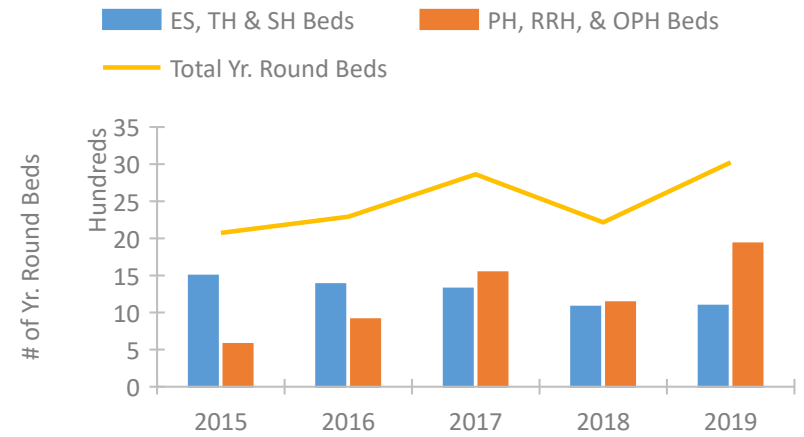


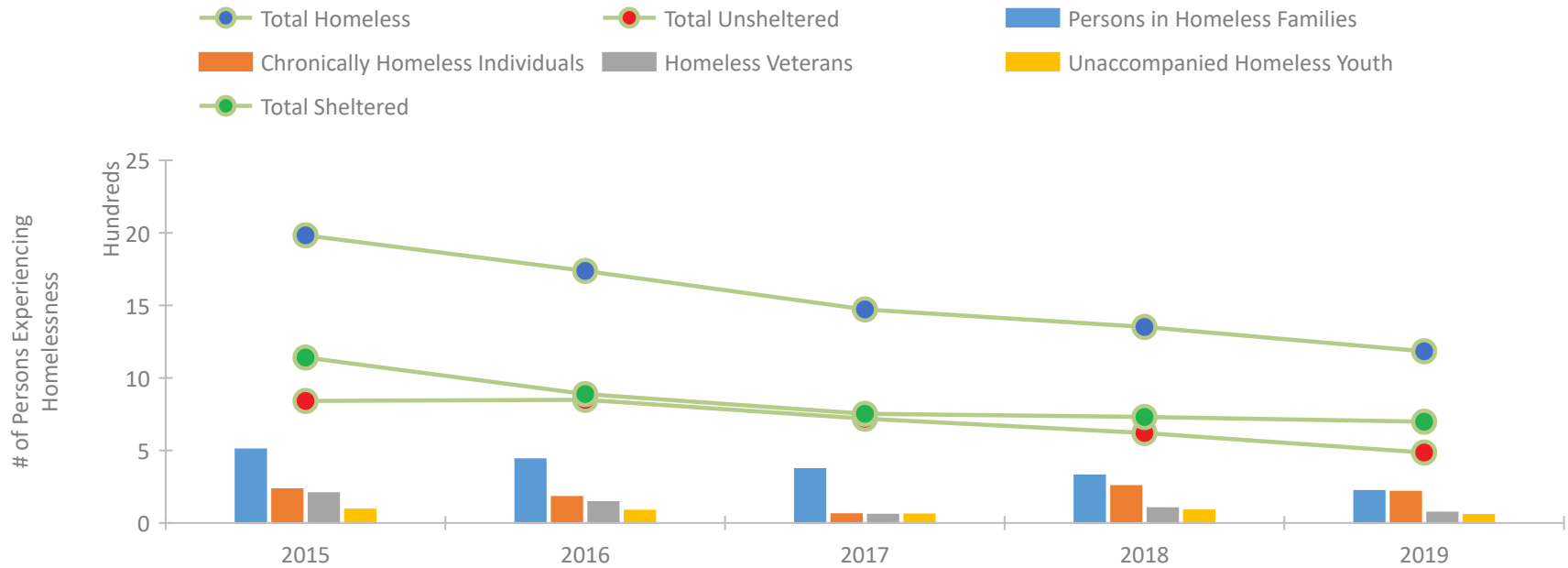
Mississippi Continuum of Care Performance Profile



Housing Inventory Count by Program Type

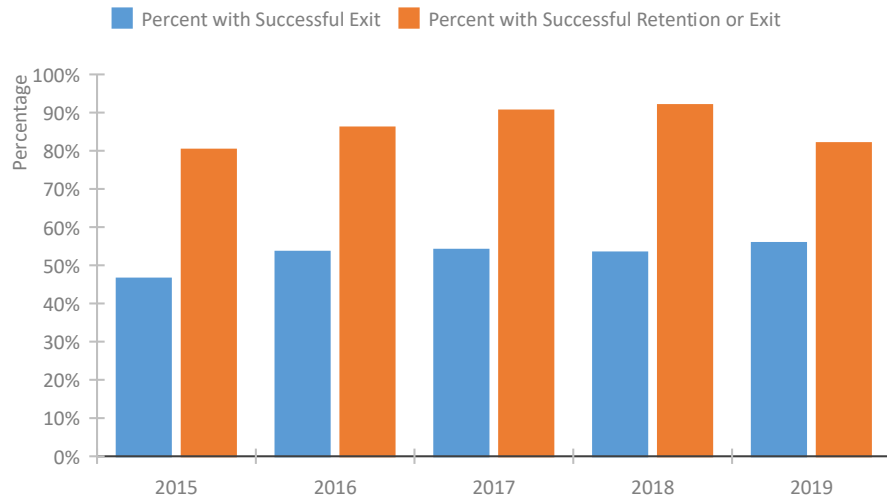


Homeless Population – Point-in-Time (PIT) Count

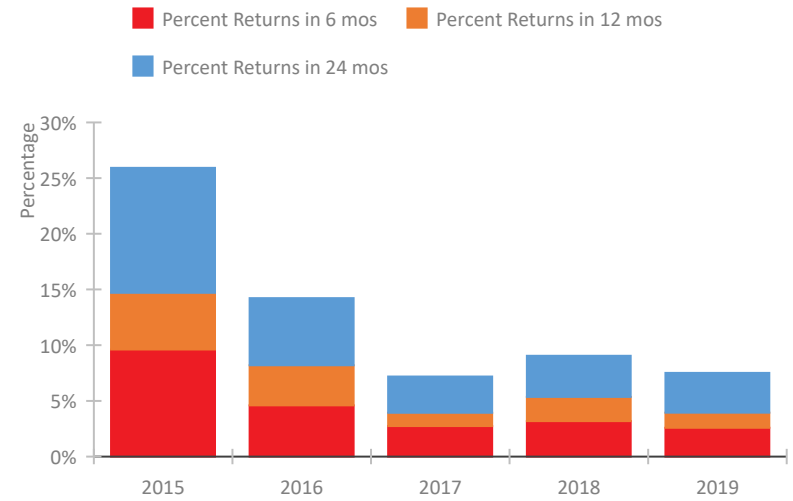


Mississippi Continuum of Care Performance Profile

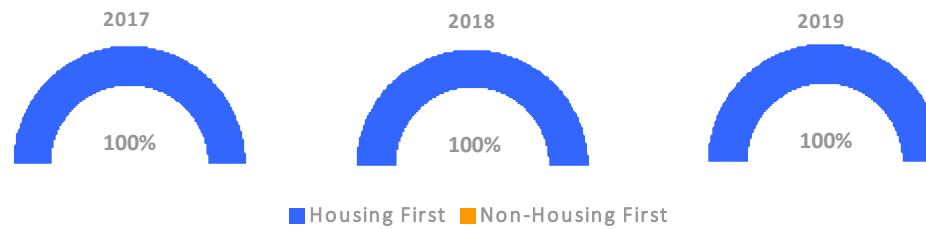
Exits to Permanent Housing by Program Type



Returns to Homelessness Over Time



Proportion of Housing First Projects by Year



Number of Projects by Year

	2017	2018	2019
Housing First Projects	26	25	21
Non-Housing First Projects	0	0	0

Data Summary: Mississippi

Point-In-Time Count Summary

	2015	2016	2017	2018	2019	2018-19 Change	% Change
Number of Sheltered Persons in Families	448	333	301	270	219	-51	-19%
Number of Unsheltered Persons in Families	60	106	71	58	2	-56	-97%
Number of Sheltered Individuals	693	556	452	461	479	18	4%
Number of Unsheltered Individuals	782	743	648	563	484	-79	-14%
Total Homeless Persons	1,983	1,738	1,472	1,352	1,184	-168	-12%
Number of Sheltered Families	138	101	90	95	68	-27	-28%
Number of Unsheltered Families	14	32	21	17	1	-16	-94%
Number of Total Families	152	133	111	112	69	-43	-38%
Sheltered Chronically Homeless Individuals	67	28	13	40	64	24	60%
Unsheltered Chronically Homeless Individuals	166	152	48	215	152	-63	-29%
Total Chronically Homeless Individuals	233	180	61	255	216	-39	-15%
Sheltered Veterans	87	58	39	37	49	12	32%
Unsheltered Veterans	119	86	18	65	23	-42	-65%
Total Veterans	206	144	57	102	72	-30	-29%
Sheltered Unaccompanied Youth (up to 24)	55	45	40	35	36	1	3%
Unsheltered Unaccompanied Youth (up to 24)	38	40	19	52	20	-32	-62%
Total Unaccompanied Youth (up to 24)	93	85	59	87	56	-31	-36%

System Performance Measures Summary

	2015	2016	2017	2018	2019	2018-19 Change	% Change
Rate People Return to Homelessness in 6 Months	9.6%	4.6%	2.7%	3.2%	2.6%	-0.6%	N/A
Number of People who are Homeless for the First Time	4,726	4,093	4,022	3,550	2,956	-594	-16.7%
Rate People Exit from ES, SH, TH, and RRH to PH	46.5%	53.5%	54.1%	53.4%	55.8%	2.5%	N/A
Rate People in PSH and OPH Retain or Exit to PH	80.3%	86.1%	90.5%	92.0%	82.0%	-9.9%	N/A

Housing Inventory Count Summary

	2015	2016	2017	2018	2019	2018-19 Change	% Change
Emergency Shelter (ES)	729	723	842	649	640	-9	-1%
Transitional Housing (TH)	769	660	480	430	453	23	5%
Permanent Supportive Housing (PSH)	314	334	361	343	662	319	93%
Rapid Re-Housing (RRH)	262	575	1,181	794	1,171	377	47%
Other Permanent Housing (OPH)	--	--	--	--	98	--	--

Award Summary

	2015	2016	2017	2018	2019	2018-19 Change	% Change
Continuum of Care (CoC)	\$5,444,246	\$5,367,903	\$5,026,381	\$5,049,204	\$5,425,404	\$376,200	7%
Emergency Solutions Grants (ESG)	\$2,403,801	\$2,386,052	\$2,558,114	\$2,362,844	\$2,440,522	\$77,678	3%
Youth Homelessness Demonstration Program (YHDP)	N/A	--	--	\$2,054,747	--	--	--