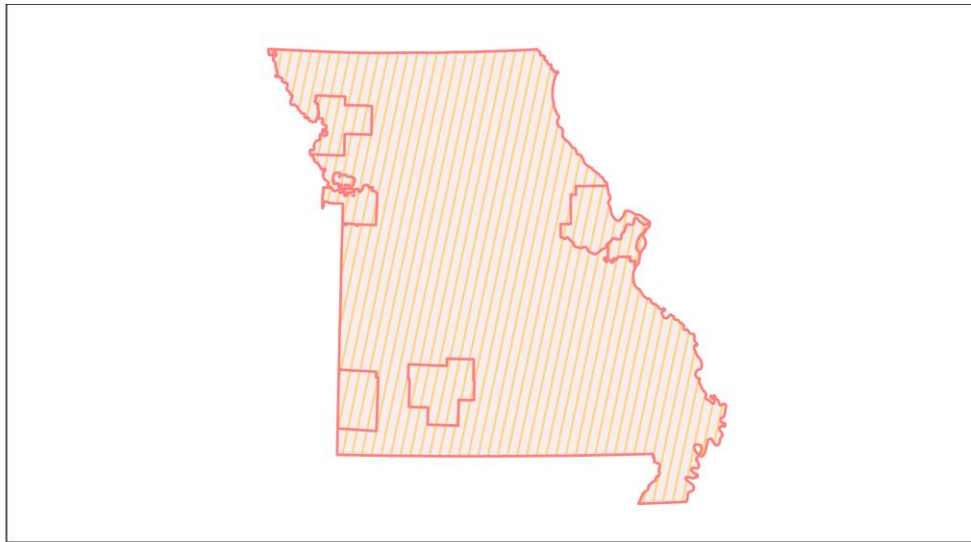
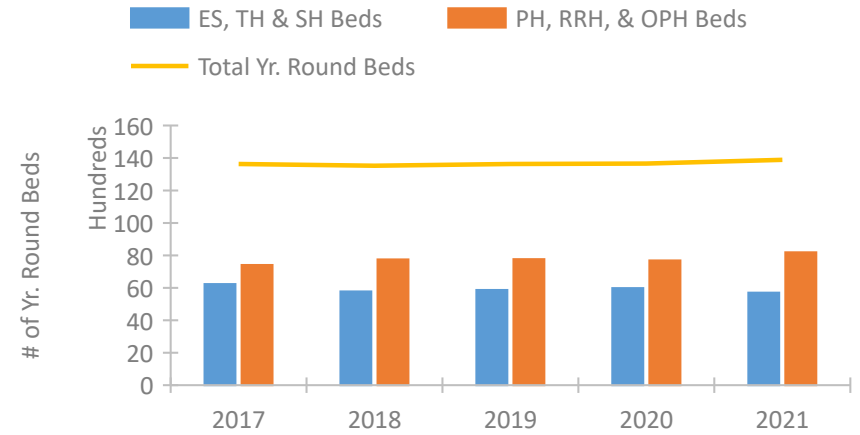


Missouri Continuum of Care Performance Profile

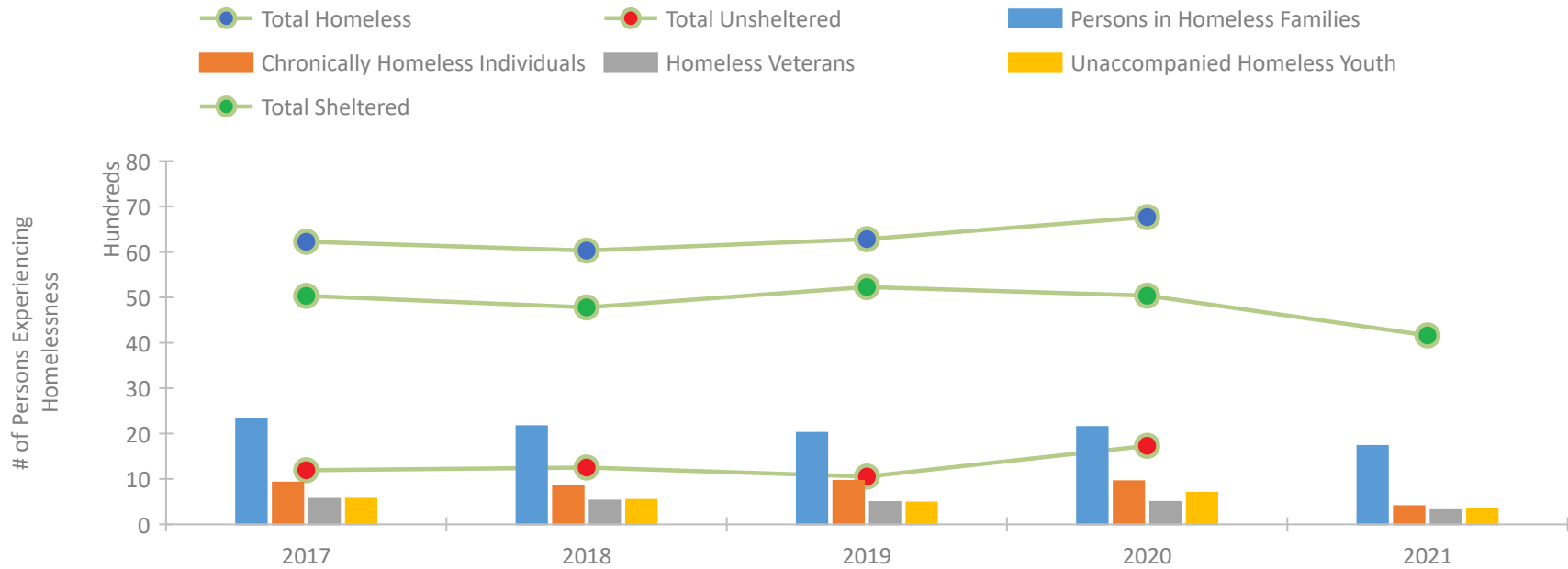


2021 CoC Boundaries 2020 CoC Boundaries

Housing Inventory Count by Program Type



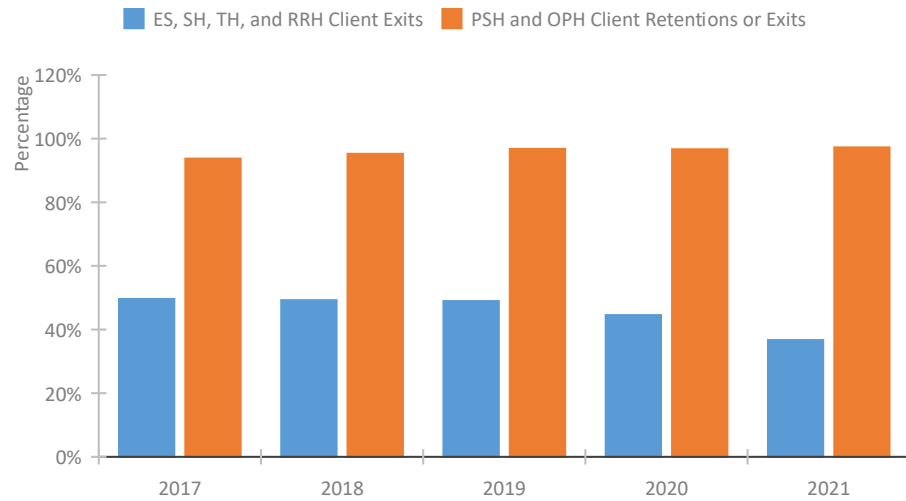
Homeless Population – Point-in-Time (PIT) Count*



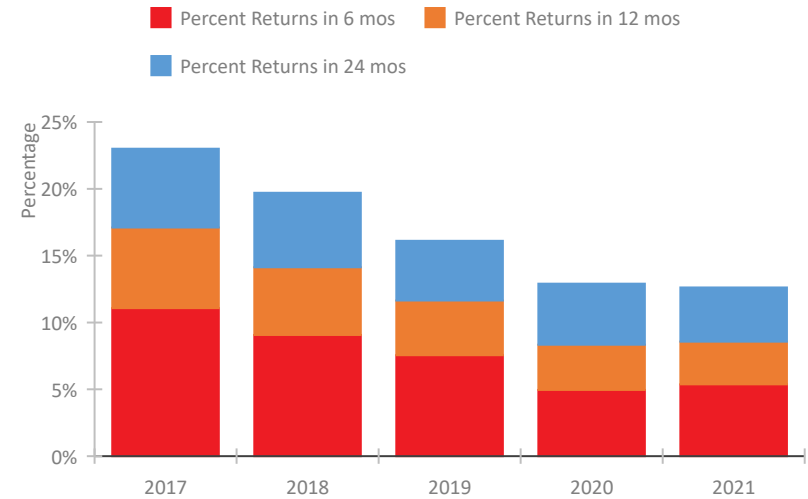
*In 2021, HUD gave communities the option to cancel or modify the unsheltered survey portion of their counts based on the potential risk of COVID-19 transmission associated with conducting an in-person survey. As a result, HUD has excluded the unsheltered population sub-totals and all unsheltered sub-population data for this reporting period. The user is cautioned that the unsheltered and total homeless counts reported here may be missing data.

Missouri Continuum of Care Performance Profile

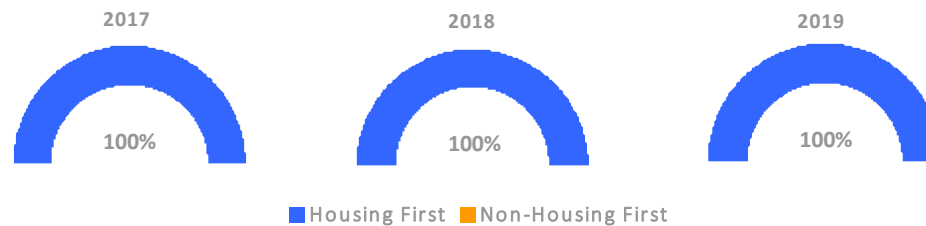
Exits to Permanent Housing by Program Type



Returns to Homelessness Over Time



Proportion of Housing First Projects by Year†



Number of Projects by Year

	2017	2018	2019
Housing First Projects	142	145	146
Non-Housing First Projects	0	0	0

†2021 Data unavailable at the time of report publication. In 2020 HUD awarded renewal projects noncompetitively, therefore no new data was collected and Housing First data remains the same from 2019 to 2020.

Data Summary: Missouri

Point-In-Time Count Summary*

	2017	2018	2019	2020	2021	2020-21 Change	% Change
Number of Sheltered Persons in Families	2,160	2,080	1,917	2,003	1,728	-275	-14%
Number of Unsheltered Persons in Families	159	81	100	142	0	-142	-100%
Number of Sheltered Individuals	2,873	2,699	3,311	3,034	2,433	-601	-20%
Number of Unsheltered Individuals	1,034	1,172	953	1,588	--	--	--
Total Homeless Persons	6,226	6,032	6,281	6,767	4,161	-2,606	-39%
Number of Sheltered Families	720	696	676	683	546	-137	-20%
Number of Unsheltered Families	45	23	34	35	--	--	--
Number of Total Families	765	719	710	718	546	-172	-24%
Sheltered Chronically Homeless Individuals	545	466	599	505	401	-104	-21%
Unsheltered Chronically Homeless Individuals	376	378	359	445	--	--	--
Total Chronically Homeless Individuals	921	844	958	950	401	-549	-58%
Sheltered Veterans	470	426	395	402	312	-90	-22%
Unsheltered Veterans	92	97	97	93	--	--	--
Total Veterans	562	523	492	495	312	-183	-37%
Sheltered Unaccompanied Youth (up to 24)	471	436	423	425	340	-85	-20%
Unsheltered Unaccompanied Youth (up to 24)	94	105	60	272	--	--	--
Total Unaccompanied Youth (up to 24)	565	541	483	697	340	-357	-51%

System Performance Measures Summary

	2017	2018	2019	2020	2021	2020-21 Change	% Change
Rate People Return to Homelessness in 6 Months	11.1%	9.1%	7.5%	5.0%	5.4%	0.4%	N/A
Number of People who are Homeless for the First Time	10,324	9,706	9,638	9,127	9,574	447	4.9%
Rate People Exit from ES, SH, TH, and RRH to PH	49.6%	49.3%	48.9%	44.5%	36.7%	-7.8%	N/A
Rate People in PSH and OPH Retain or Exit to PH	93.7%	95.2%	96.8%	96.7%	97.2%	0.6%	N/A

Housing Inventory Count Summary

	2017	2018	2019	2020	2021	2020-21 Change	% Change
Emergency Shelter (ES)	3,917	3,773	4,031	3,947	3,860	-87	-2%
Safe Haven (SH)	40	51	51	51	51	0	0%
Transitional Housing (TH)	2,271	1,949	1,784	1,980	1,787	-193	-10%
Permanent Supportive Housing (PSH)	6,196	5,973	5,979	6,021	5,672	-349	-6%
Rapid Re-Housing (RRH)	1,132	1,629	1,599	1,406	2,196	790	56%
Other Permanent Housing (OPH)	80	148	192	254	321	67	26%

Award Summary

	2017	2018	2019	2020	2021	2020-21 Change	% Change
Continuum of Care (CoC)	\$35,730,419	\$36,369,089	\$38,085,611	\$39,717,852	\$42,391,573	\$2,673,721	7%
Emergency Solutions Grants (ESG)	\$5,809,121	\$5,286,959	\$5,314,911	\$5,514,661	\$5,508,251	(\$6,410)	0%
Youth Homelessness Demonstration Program (YHDP)	--	--	--	--	\$6,857,269	--	--

*In 2021, HUD gave communities the option to cancel or modify the unsheltered survey portion of their counts based on the potential risk of COVID-19 transmission associated with conducting an in-person survey. As a result, HUD has excluded the unsheltered population sub-totals and all unsheltered sub-population data for this reporting period. The user is cautioned that the unsheltered and total homeless counts reported here may be missing data.