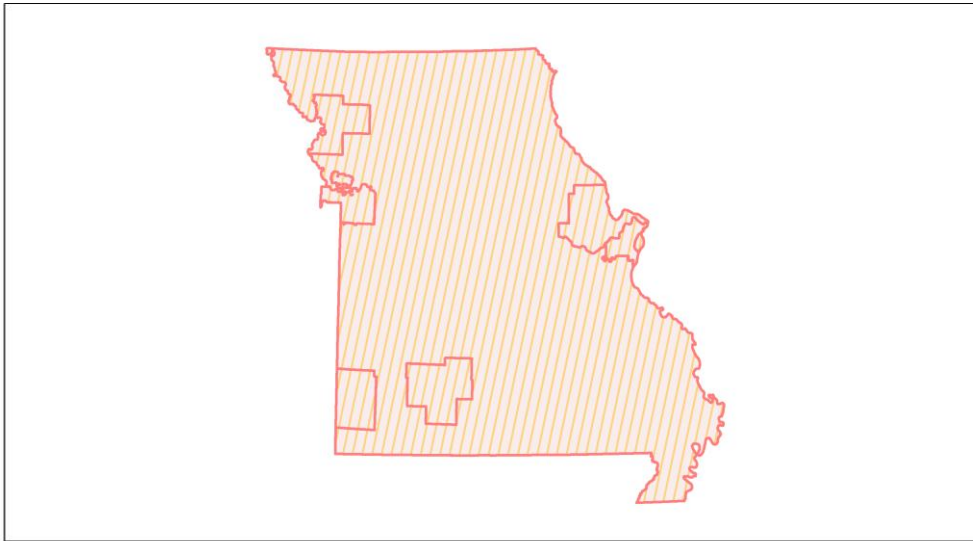
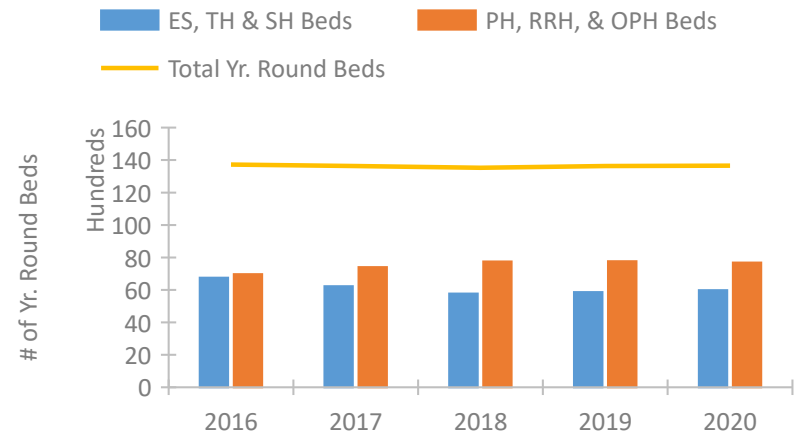


Missouri Continuum of Care Performance Profile

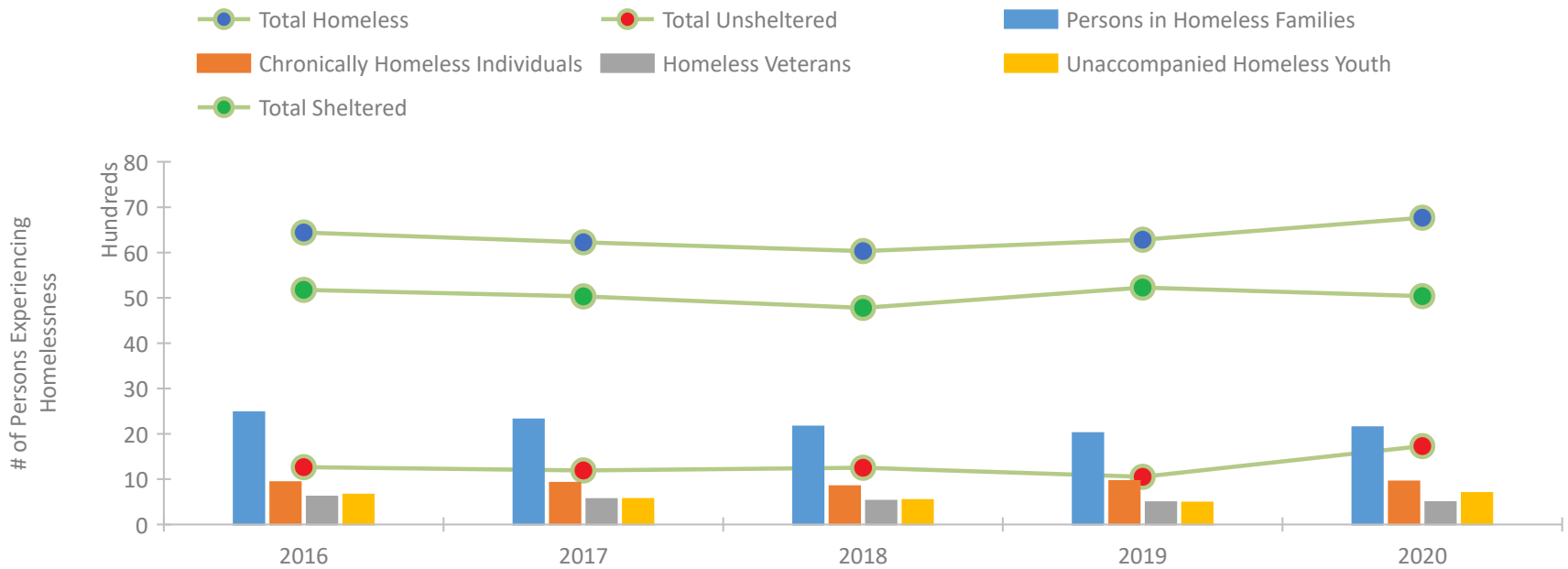


2020 CoC Boundaries 2019 CoC Boundaries

Housing Inventory Count by Program Type

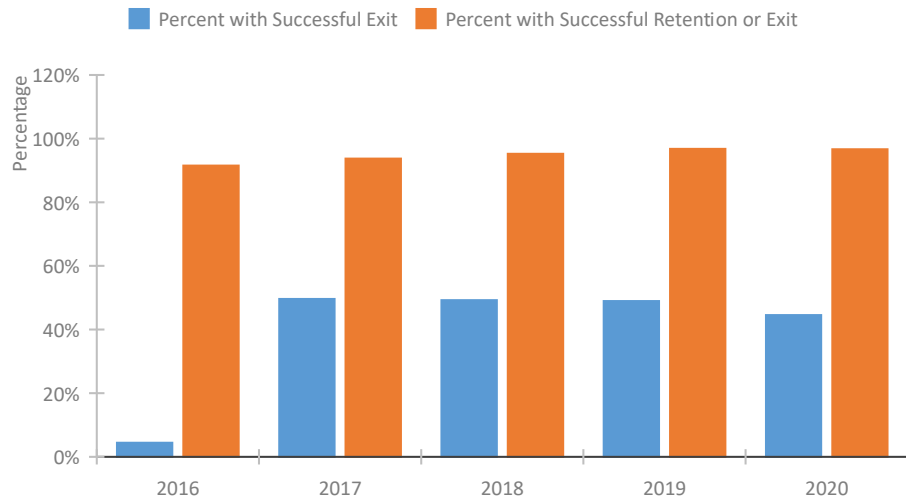


Homeless Population – Point-in-Time (PIT) Count

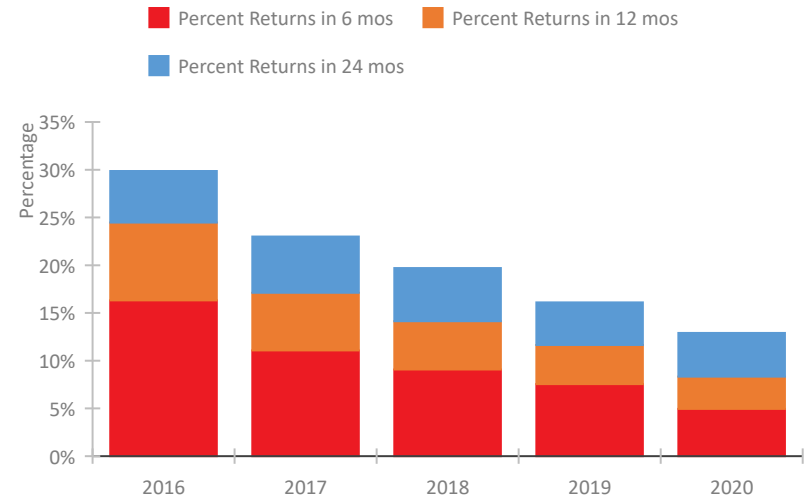


Missouri Continuum of Care Performance Profile

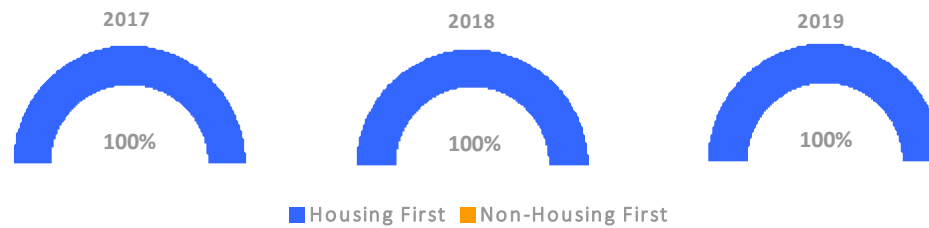
Exits to Permanent Housing by Program Type



Returns to Homelessness Over Time



Proportion of Housing First Projects by Year*



Number of Projects by Year			
	2017	2018	2019
Housing First Projects	142	145	146
Non-Housing First Projects	0	0	0

*In 2020 HUD awarded renewal projects noncompetitively, therefore no new data was collected and Housing First data remains the same from 2019 to 2020.

Data Summary: Missouri

Point-In-Time Count Summary

	2016	2017	2018	2019	2020	2019-20 Change	% Change
Number of Sheltered Persons in Families	2,242	2,160	2,080	1,917	2,003	86	4%
Number of Unsheltered Persons in Families	236	159	81	100	142	42	42%
Number of Sheltered Individuals	2,933	2,873	2,699	3,311	3,034	-277	-8%
Number of Unsheltered Individuals	1,030	1,034	1,172	953	1,588	635	67%
Total Homeless Persons	6,441	6,226	6,032	6,281	6,767	486	8%
Number of Sheltered Families	731	720	696	676	683	7	1%
Number of Unsheltered Families	64	45	23	34	35	1	3%
Number of Total Families	795	765	719	710	718	8	1%
Sheltered Chronically Homeless Individuals	578	545	466	599	505	-94	-16%
Unsheltered Chronically Homeless Individuals	357	376	378	359	445	86	24%
Total Chronically Homeless Individuals	935	921	844	958	950	-8	-1%
Sheltered Veterans	528	470	426	395	402	7	2%
Unsheltered Veterans	87	92	97	97	93	-4	-4%
Total Veterans	615	562	523	492	495	3	1%
Sheltered Unaccompanied Youth (up to 24)	502	471	436	423	425	2	0%
Unsheltered Unaccompanied Youth (up to 24)	156	94	105	60	272	212	353%
Total Unaccompanied Youth (up to 24)	658	565	541	483	697	214	44%

System Performance Measures Summary

	2016	2017	2018	2019	2020	2019-20 Change	% Change
Rate People Return to Homelessness in 6 Months	16.3%	11.1%	9.1%	7.5%	5.0%	-2.6%	N/A
Number of People who are Homeless for the First Time	15,528	10,324	9,706	9,638	9,127	-511	-5.3%
Rate People Exit from ES, SH, TH, and RRH to PH	4.4%	49.6%	49.3%	48.9%	44.5%	-4.4%	N/A
Rate People in PSH and OPH Retain or Exit to PH	91.5%	93.7%	95.2%	96.8%	96.7%	-0.1%	N/A

Housing Inventory Count Summary

	2016	2017	2018	2019	2020	2019-20 Change	% Change
Emergency Shelter (ES)	4,171	3,917	3,773	4,031	3,947	-84	-2%
Safe Haven (SH)	40	40	51	51	51	0	-0%
Transitional Housing (TH)	2,544	2,271	1,949	1,784	1,980	196	11%
Permanent Supportive Housing (PSH)	5,522	6,196	5,973	5,979	6,021	42	1%
Rapid Re-Housing (RRH)	1,333	1,132	1,629	1,599	1,406	-193	-12%
Other Permanent Housing (OPH)	108	80	148	192	254	62	32%

Award Summary

	2016	2017	2018	2019	2020	2019-20 Change	% Change
Continuum of Care (CoC)	\$34,048,619	\$35,730,419	\$36,369,089	\$38,085,611	\$39,717,852	\$1,632,241	4%
Emergency Solutions Grants (ESG)	\$5,328,110	\$5,809,121	\$5,286,959	\$5,314,911	\$5,514,661	\$199,750	4%