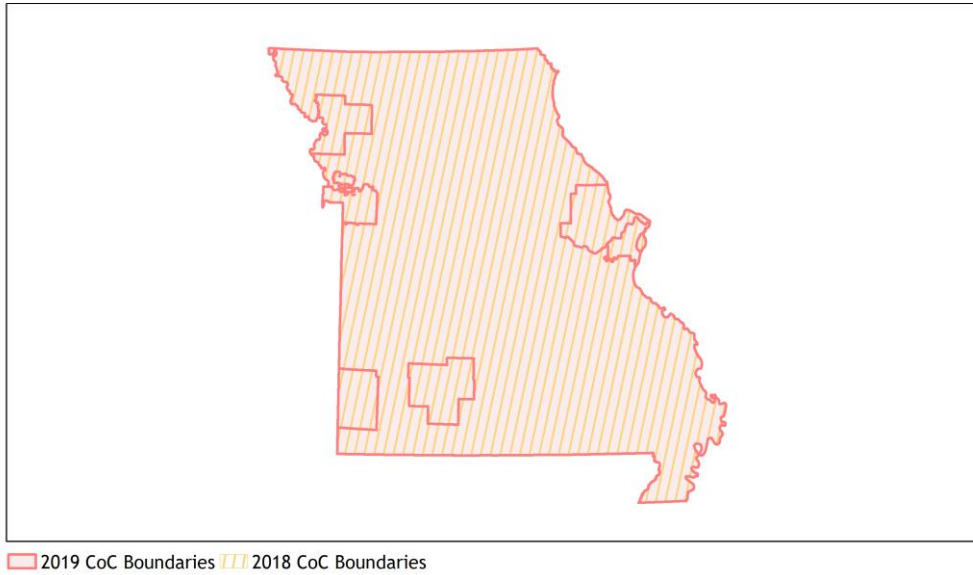
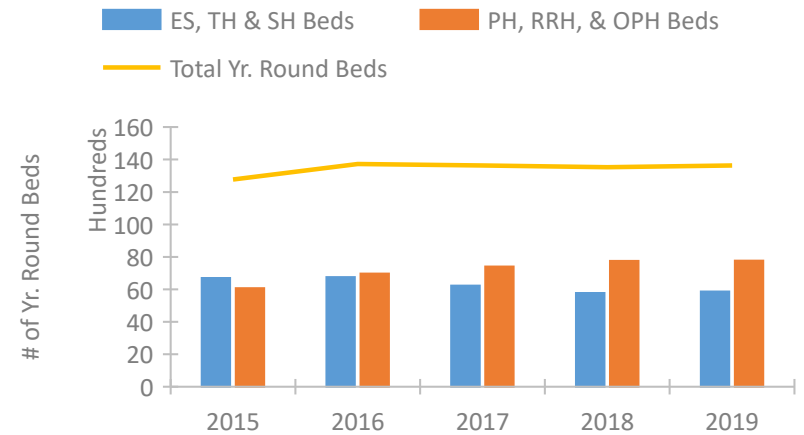


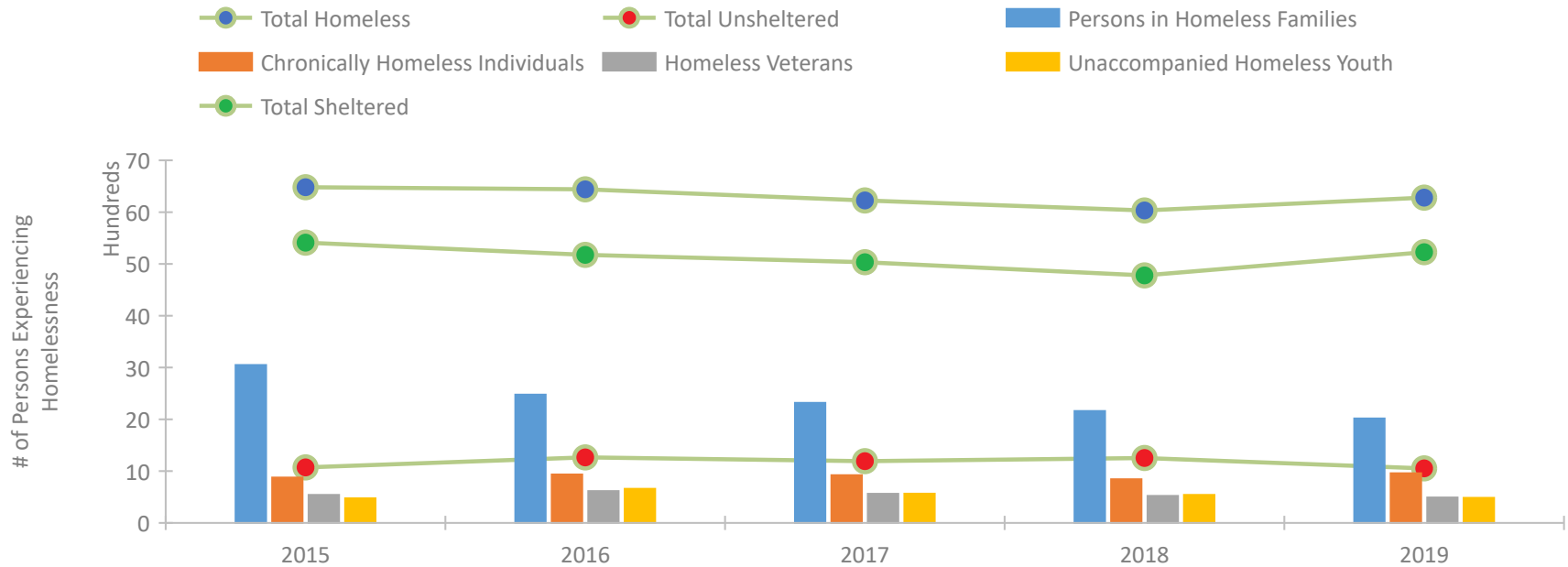
## Missouri Continuum of Care Performance Profile



### Housing Inventory Count by Program Type

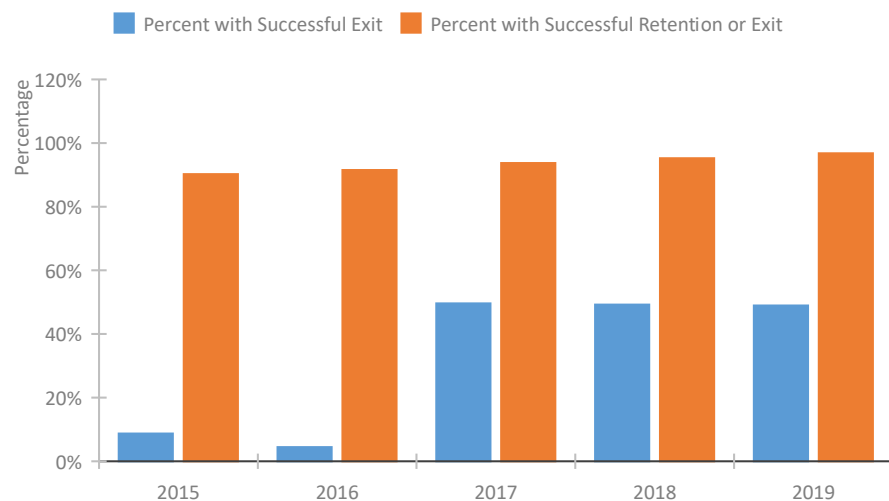


### Homeless Population – Point-in-Time (PIT) Count

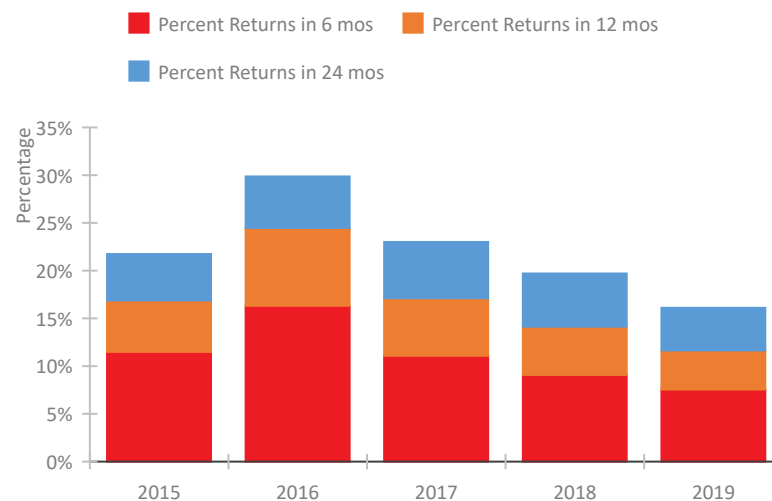


## Missouri Continuum of Care Performance Profile

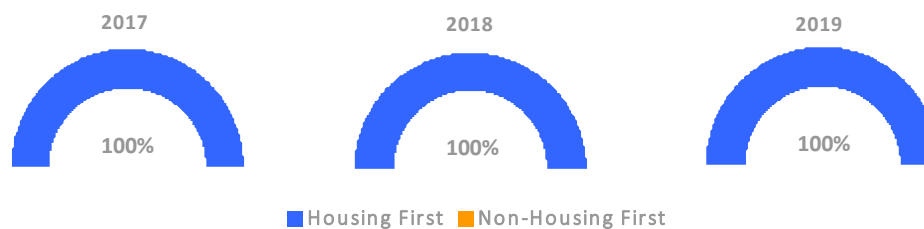
### Exits to Permanent Housing by Program Type



### Returns to Homelessness Over Time



### Proportion of Housing First Projects by Year



### Number of Projects by Year

	2017	2018	2019
Housing First Projects	142	145	146
Non-Housing First Projects	0	0	0

## Data Summary: Missouri

### Point-In-Time Count Summary

	2015	2016	2017	2018	2019	2018-19 Change	% Change
Number of Sheltered Persons in Families	2,771	2,242	2,160	2,080	1,917	-163	-8%
Number of Unsheltered Persons in Families	277	236	159	81	100	19	23%
Number of Sheltered Individuals	2,640	2,933	2,873	2,699	3,311	612	23%
Number of Unsheltered Individuals	794	1,030	1,034	1,172	953	-219	-19%
<b>Total Homeless Persons</b>	<b>6,482</b>	<b>6,441</b>	<b>6,226</b>	<b>6,032</b>	<b>6,281</b>	<b>249</b>	<b>4%</b>
Number of Sheltered Families	845	731	720	696	676	-20	-3%
Number of Unsheltered Families	81	64	45	23	34	11	48%
<b>Number of Total Families</b>	<b>926</b>	<b>795</b>	<b>765</b>	<b>719</b>	<b>710</b>	<b>-9</b>	<b>-1%</b>
Sheltered Chronically Homeless Individuals	536	578	545	466	599	133	29%
Unsheltered Chronically Homeless Individuals	339	357	376	378	359	-19	-5%
<b>Total Chronically Homeless Individuals</b>	<b>875</b>	<b>935</b>	<b>921</b>	<b>844</b>	<b>958</b>	<b>114</b>	<b>14%</b>
Sheltered Veterans	430	528	470	426	395	-31	-7%
Unsheltered Veterans	110	87	92	97	97	0	0%
<b>Total Veterans</b>	<b>540</b>	<b>615</b>	<b>562</b>	<b>523</b>	<b>492</b>	<b>-31</b>	<b>-6%</b>
Sheltered Unaccompanied Youth (up to 24)	393	502	471	436	423	-13	-3%
Unsheltered Unaccompanied Youth (up to 24)	81	156	94	105	60	-45	-43%
<b>Total Unaccompanied Youth (up to 24)</b>	<b>474</b>	<b>658</b>	<b>565</b>	<b>541</b>	<b>483</b>	<b>-58</b>	<b>-11%</b>

### System Performance Measures Summary

	2015	2016	2017	2018	2019	2018-19 Change	% Change
Rate People Return to Homelessness in 6 Months	11.5%	16.3%	11.1%	9.1%	7.5%	-1.5%	N/A
Number of People who are Homeless for the First Time	13,802	15,528	10,324	9,706	9,638	-68	-0.7%
Rate People Exit from ES, SH, TH, and RRH to PH	8.7%	4.4%	49.6%	49.3%	48.9%	-0.3%	N/A
Rate People in PSH and OPH Retain or Exit to PH	90.2%	91.5%	93.7%	95.2%	96.8%	1.6%	N/A

### Housing Inventory Count Summary

	2015	2016	2017	2018	2019	2018-19 Change	% Change
Emergency Shelter (ES)	4,128	4,171	3,917	3,773	4,031	258	7%
Safe Haven (SH)	58	40	40	51	51	0	0%
Transitional Housing (TH)	2,514	2,544	2,271	1,949	1,784	-165	-8%
Permanent Supportive Housing (PSH)	5,016	5,522	6,196	5,973	5,979	6	0%
Rapid Re-Housing (RRH)	907	1,333	1,132	1,629	1,599	-30	-2%
Other Permanent Housing (OPH)	148	108	80	148	192	44	30%

### Award Summary

	2015	2016	2017	2018	2019	2018-19 Change	% Change
<b>Continuum of Care (CoC)</b>	\$31,381,154	\$34,048,619	\$35,730,419	\$36,369,089	\$38,085,611	\$1,716,522	5%
<b>Emergency Solutions Grants (ESG)</b>	\$5,338,778	\$5,328,110	\$5,809,121	\$5,286,959	\$5,314,911	\$27,952	1%