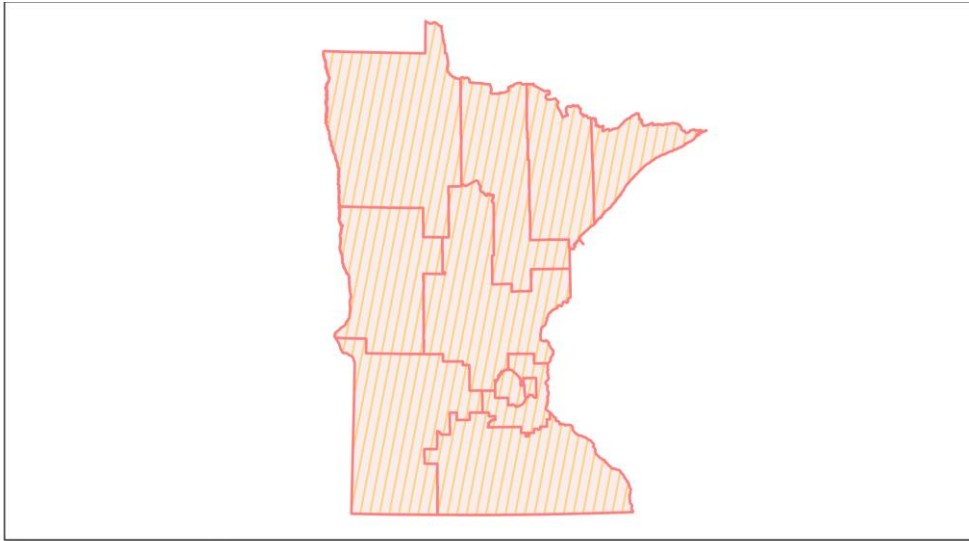
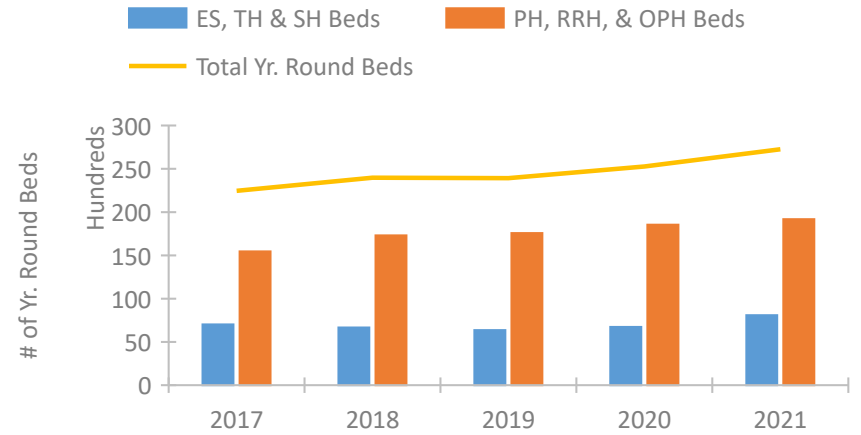


## Minnesota Continuum of Care Performance Profile

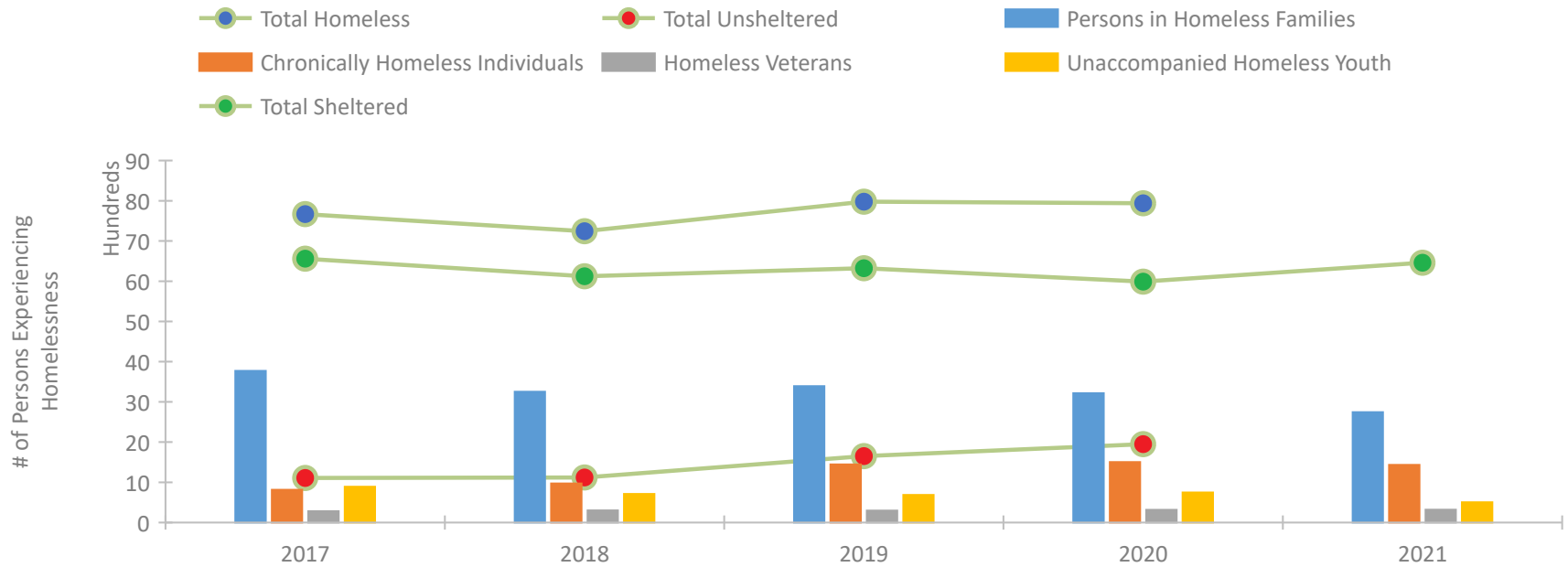


2021 CoC Boundaries 2020 CoC Boundaries

### Housing Inventory Count by Program Type



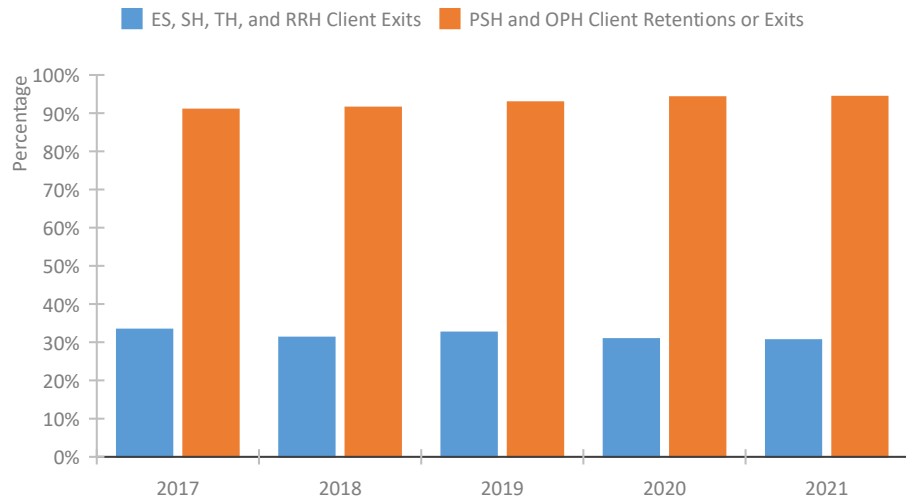
### Homeless Population – Point-in-Time (PIT) Count\*



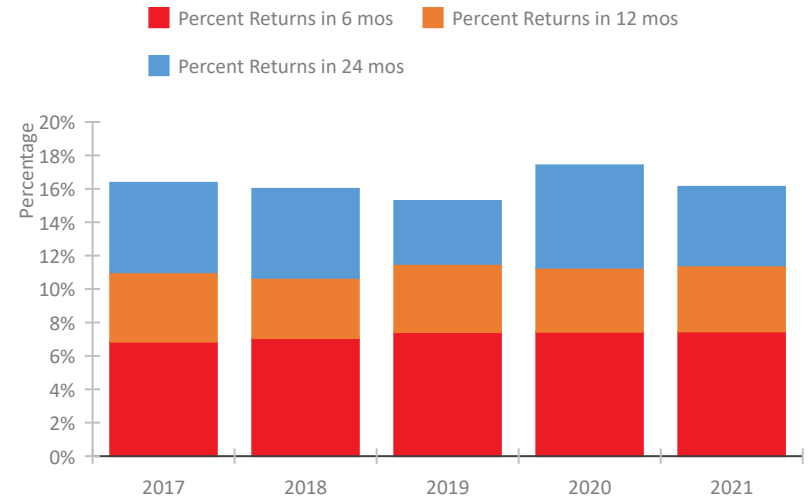
\*In 2021, HUD gave communities the option to cancel or modify the unsheltered survey portion of their counts based on the potential risk of COVID-19 transmission associated with conducting an in-person survey. As a result, HUD has excluded the unsheltered population sub-totals and all unsheltered sub-population data for this reporting period. The user is cautioned that the unsheltered and total homeless counts reported here may be missing data.

## Minnesota Continuum of Care Performance Profile

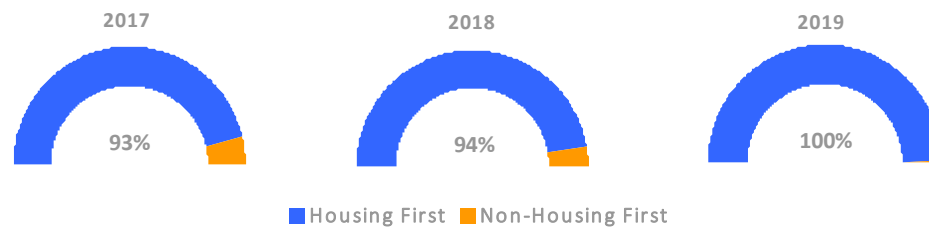
### Exits to Permanent Housing by Program Type



### Returns to Homelessness Over Time



### Proportion of Housing First Projects by Year†



Number of Projects by Year			
	2017	2018	2019
Housing First Projects	194	185	599
Non-Housing First Projects	15	11	3

†2021 Data unavailable at the time of report publication. In 2020 HUD awarded renewal projects noncompetitively, therefore no new data was collected and Housing First data remains the same from 2019 to 2020.

## Data Summary: Minnesota

### Point-In-Time Count Summary\*

	2017	2018	2019	2020	2021	2020-21 Change	% Change
Number of Sheltered Persons in Families	3,668	3,103	3,187	2,970	2,745	-225	-8%
Number of Unsheltered Persons in Families	101	147	204	244	0	-244	-100%
Number of Sheltered Individuals	2,892	3,019	3,137	3,021	3,716	695	23%
Number of Unsheltered Individuals	1,007	974	1,449	1,705	--	--	--
<b>Total Homeless Persons</b>	<b>7,668</b>	<b>7,243</b>	<b>7,977</b>	<b>7,940</b>	<b>6,461</b>	<b>-1,479</b>	<b>-19%</b>
Number of Sheltered Families	1,110	935	968	893	826	-67	-8%
Number of Unsheltered Families	30	44	60	74	--	--	--
<b>Number of Total Families</b>	<b>1,140</b>	<b>979</b>	<b>1,028</b>	<b>967</b>	<b>826</b>	<b>-141</b>	<b>-15%</b>
Sheltered Chronically Homeless Individuals	472	631	859	746	1,433	687	92%
Unsheltered Chronically Homeless Individuals	341	339	585	758	--	--	--
<b>Total Chronically Homeless Individuals</b>	<b>813</b>	<b>970</b>	<b>1,444</b>	<b>1,504</b>	<b>1,433</b>	<b>-71</b>	<b>-5%</b>
Sheltered Veterans	244	250	234	268	318	50	19%
Unsheltered Veterans	37	51	63	47	--	--	--
<b>Total Veterans</b>	<b>281</b>	<b>301</b>	<b>297</b>	<b>315</b>	<b>318</b>	<b>3</b>	<b>1%</b>
Sheltered Unaccompanied Youth (up to 24)	739	561	548	500	505	5	1%
Unsheltered Unaccompanied Youth (up to 24)	150	148	137	246	--	--	--
<b>Total Unaccompanied Youth (up to 24)</b>	<b>889</b>	<b>709</b>	<b>685</b>	<b>746</b>	<b>505</b>	<b>-241</b>	<b>-32%</b>

### System Performance Measures Summary

	2017	2018	2019	2020	2021	2020-21 Change	% Change
Rate People Return to Homelessness in 6 Months	6.9%	7.1%	7.4%	7.4%	7.5%	0%	N/A
Number of People who are Homeless for the First Time	19,241	18,838	14,730	13,913	13,855	-58	-0.4%
Rate People Exit from ES, SH, TH, and RRH to PH	33.3%	31.2%	32.6%	30.8%	30.5%	-0.3%	N/A
Rate People in PSH and OPH Retain or Exit to PH	90.9%	91.4%	92.8%	94.2%	94.3%	0.1%	N/A

### Housing Inventory Count Summary

	2017	2018	2019	2020	2021	2020-21 Change	% Change
Emergency Shelter (ES)	3,766	4,002	3,948	4,263	5,716	1,453	34%
Transitional Housing (TH)	3,247	2,640	2,390	2,467	2,374	-93	-4%
Permanent Supportive Housing (PSH)	10,877	10,464	10,973	11,029	10,809	-220	-2%
Rapid Re-Housing (RRH)	2,396	2,560	2,085	2,553	2,630	77	3%
Other Permanent Housing (OPH)	2,180	4,287	4,521	4,960	5,731	771	16%

### Award Summary

	2017	2018	2019	2020	2021	2020-21 Change	% Change
<b>Continuum of Care (CoC)</b>	\$33,094,266	\$34,078,630	\$34,799,267	\$36,842,041	\$38,003,219	\$1,161,178	3%
<b>Emergency Solutions Grants (ESG)</b>	\$4,296,472	\$4,294,809	\$4,435,112	\$4,563,896	\$4,544,171	(\$19,725)	0%
<b>Youth Homelessness Demonstration Program (YHDP)</b>	\$1,405,047	--	--	\$3,464,687	--	--	--

\*In 2021, HUD gave communities the option to cancel or modify the unsheltered survey portion of their counts based on the potential risk of COVID-19 transmission associated with conducting an in-person survey. As a result, HUD has excluded the unsheltered population sub-totals and all unsheltered sub-population data for this reporting period. The user is cautioned that the unsheltered and total homeless counts reported here may be missing data.