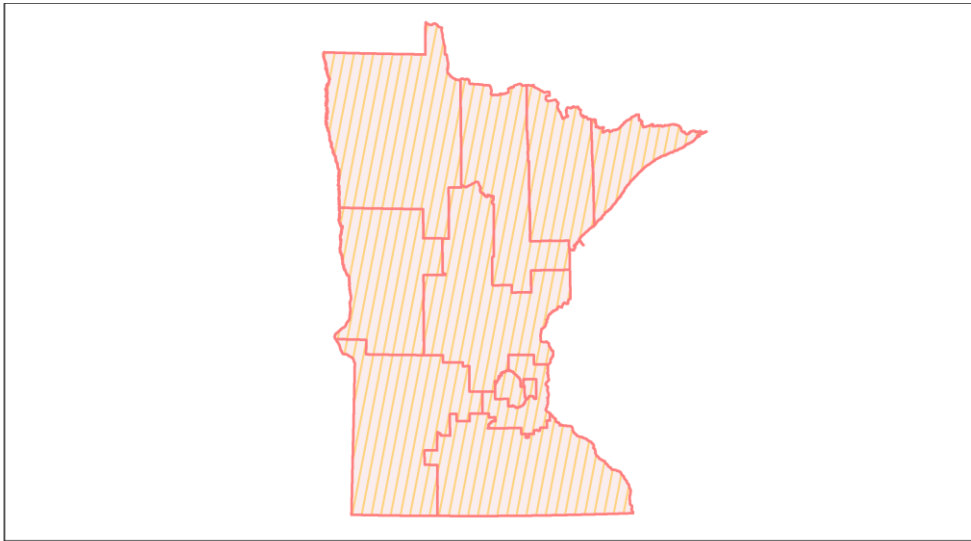
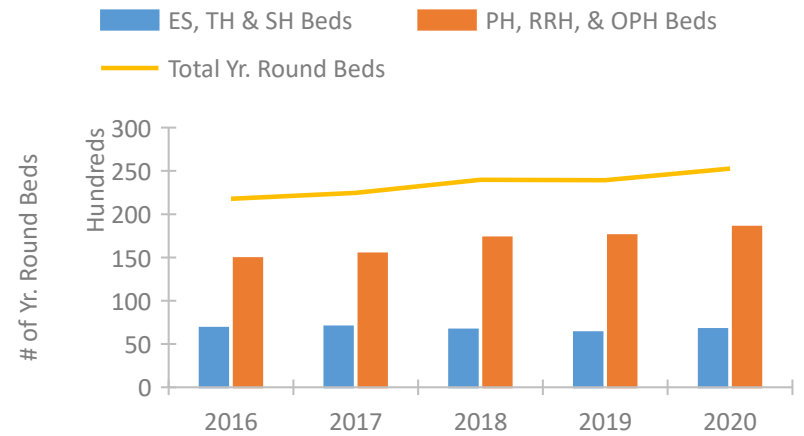


Minnesota Continuum of Care Performance Profile

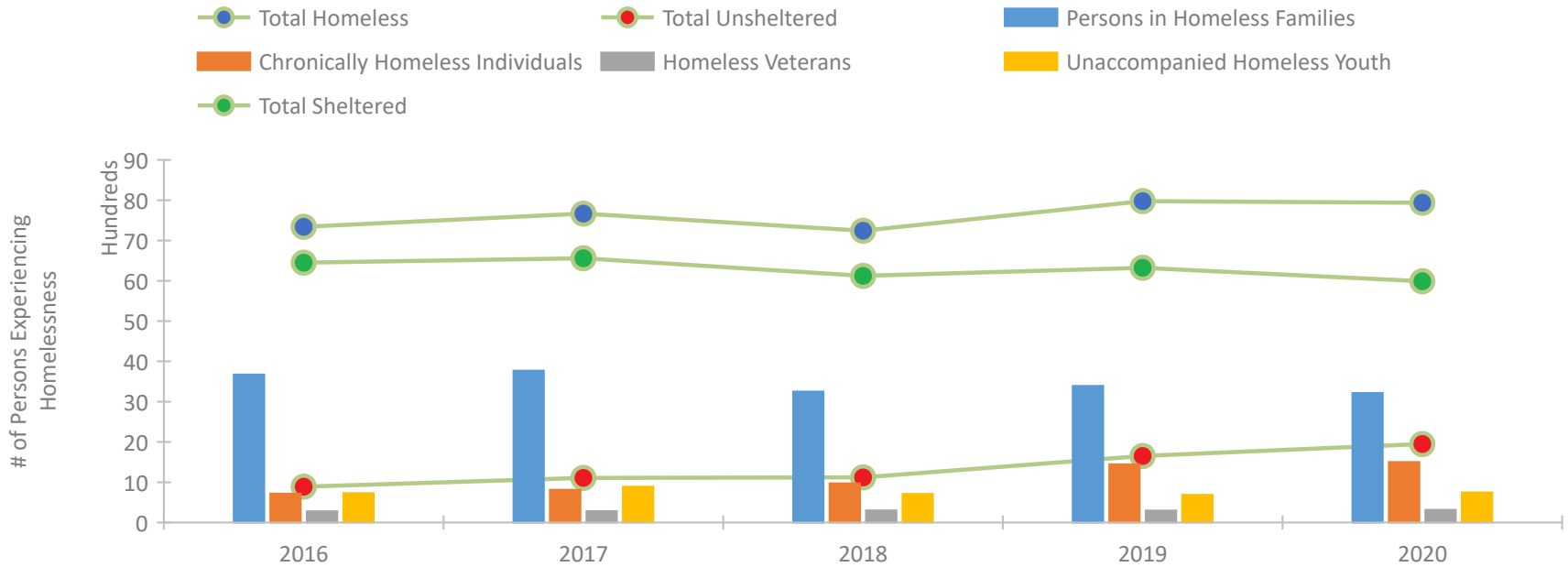


2020 CoC Boundaries 2019 CoC Boundaries

Housing Inventory Count by Program Type

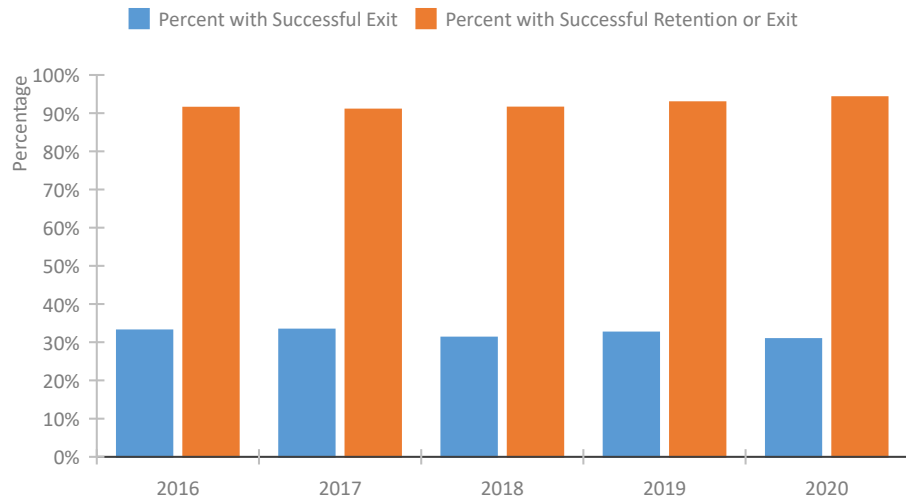


Homeless Population – Point-in-Time (PIT) Count

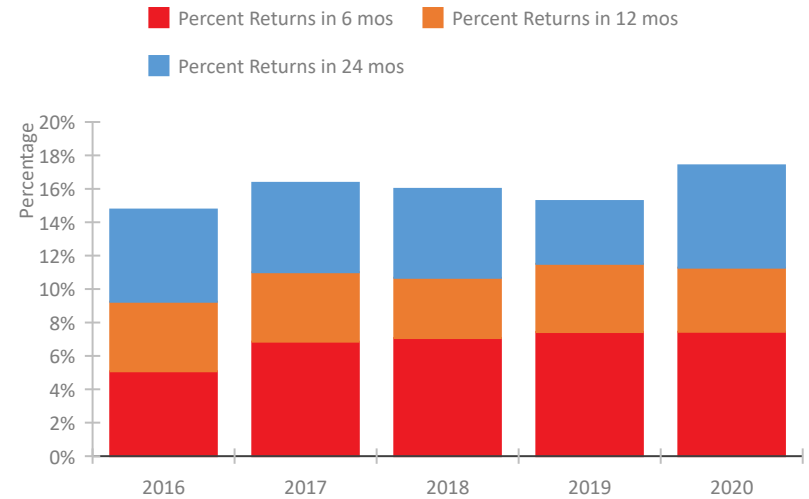


Minnesota Continuum of Care Performance Profile

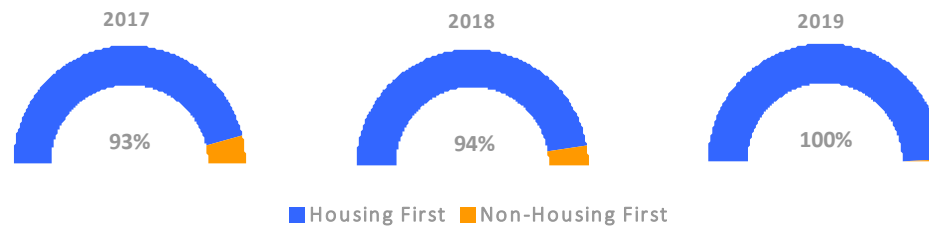
Exits to Permanent Housing by Program Type



Returns to Homelessness Over Time



Proportion of Housing First Projects by Year*



Number of Projects by Year			
	2017	2018	2019
Housing First Projects	194	185	599
Non-Housing First Projects	15	11	3

*In 2020 HUD awarded renewal projects noncompetitively, therefore no new data was collected and Housing First data remains the same from 2019 to 2020.

Data Summary: Minnesota

Point-In-Time Count Summary

	2016	2017	2018	2019	2020	2019-20 Change	% Change
Number of Sheltered Persons in Families	3,550	3,668	3,103	3,187	2,970	-217	-7%
Number of Unsheltered Persons in Families	122	101	147	204	244	40	20%
Number of Sheltered Individuals	2,902	2,892	3,019	3,137	3,021	-116	-4%
Number of Unsheltered Individuals	767	1,007	974	1,449	1,705	256	18%
Total Homeless Persons	7,341	7,668	7,243	7,977	7,940	-37	-0%
Number of Sheltered Families	1,034	1,110	935	968	893	-75	-8%
Number of Unsheltered Families	31	30	44	60	74	14	23%
Number of Total Families	1,065	1,140	979	1,028	967	-61	-6%
Sheltered Chronically Homeless Individuals	570	472	631	859	746	-113	-13%
Unsheltered Chronically Homeless Individuals	145	341	339	585	758	173	30%
Total Chronically Homeless Individuals	715	813	970	1,444	1,504	60	4%
Sheltered Veterans	248	244	250	234	268	34	15%
Unsheltered Veterans	31	37	51	63	47	-16	-25%
Total Veterans	279	281	301	297	315	18	6%
Sheltered Unaccompanied Youth (up to 24)	613	739	561	548	500	-48	-9%
Unsheltered Unaccompanied Youth (up to 24)	117	150	148	137	246	109	80%
Total Unaccompanied Youth (up to 24)	730	889	709	685	746	61	9%

System Performance Measures Summary

	2016	2017	2018	2019	2020	2019-20 Change	% Change
Rate People Return to Homelessness in 6 Months	5.1%	6.9%	7.1%	7.4%	7.4%	0%	N/A
Number of People who are Homeless for the First Time	20,208	19,241	18,838	14,730	13,913	-817	-5.5%
Rate People Exit from ES, SH, TH, and RRH to PH	33.1%	33.3%	31.2%	32.6%	30.8%	-1.7%	N/A
Rate People in PSH and OPH Retain or Exit to PH	91.4%	90.9%	91.4%	92.8%	94.2%	1.3%	N/A

Housing Inventory Count Summary

	2016	2017	2018	2019	2020	2019-20 Change	% Change
Emergency Shelter (ES)	3,737	3,766	4,002	3,948	4,263	315	8%
Transitional Housing (TH)	3,134	3,247	2,640	2,390	2,467	77	3%
Permanent Supportive Housing (PSH)	12,256	10,877	10,464	10,973	11,029	56	1%
Rapid Re-Housing (RRH)	2,095	2,396	2,560	2,085	2,553	468	22%
Other Permanent Housing (OPH)	561	2,180	4,287	4,521	4,960	439	10%

Award Summary

	2016	2017	2018	2019	2020	2019-20 Change	% Change
Continuum of Care (CoC)	\$31,972,913	\$33,094,266	\$34,078,630	\$34,799,267	\$36,842,041	\$2,042,774	6%
Emergency Solutions Grants (ESG)	\$4,318,401	\$4,296,472	\$4,294,809	\$4,435,112	\$4,563,896	\$128,784	3%
Youth Homelessness Demonstration Program (YHDP)	--	\$1,405,047	--	--	\$3,464,687	--	--