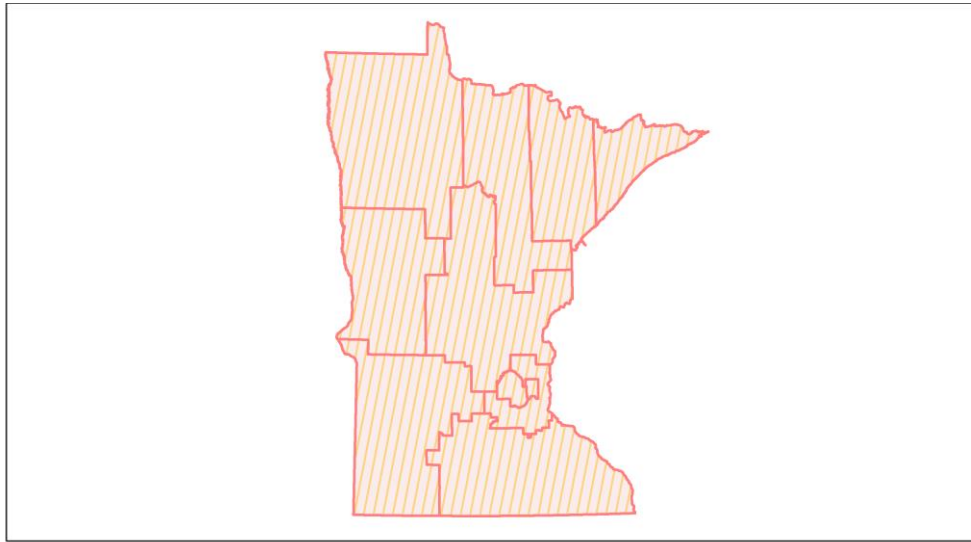
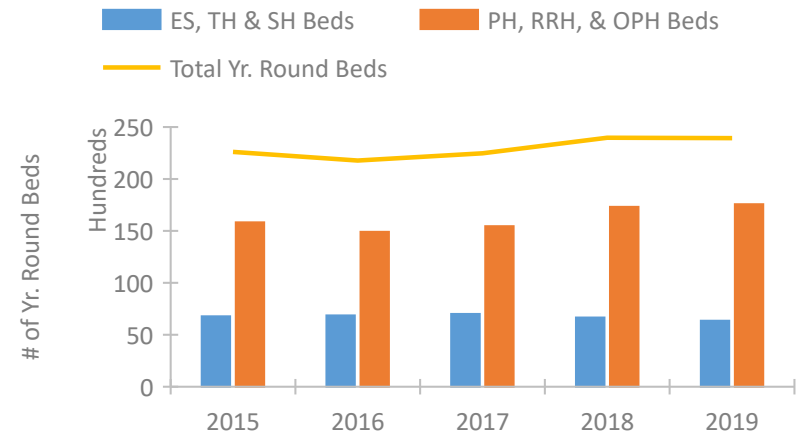


Minnesota Continuum of Care Performance Profile

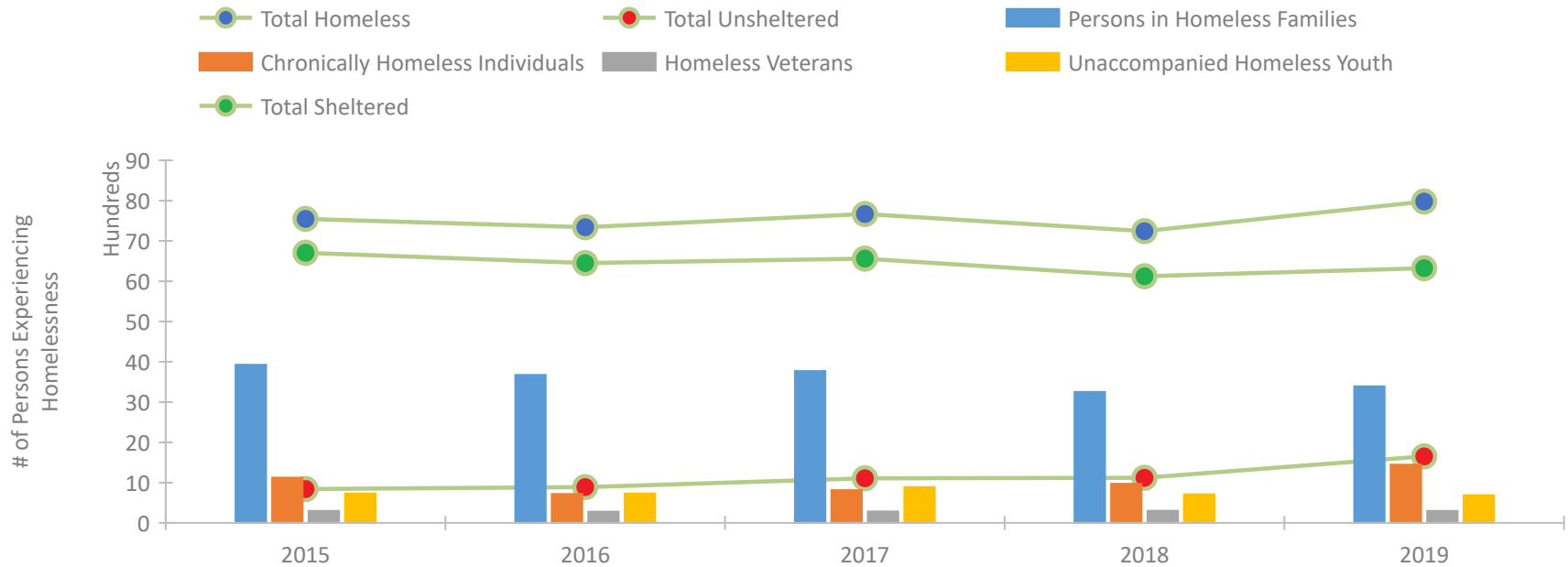


2019 CoC Boundaries 2018 CoC Boundaries

Housing Inventory Count by Program Type

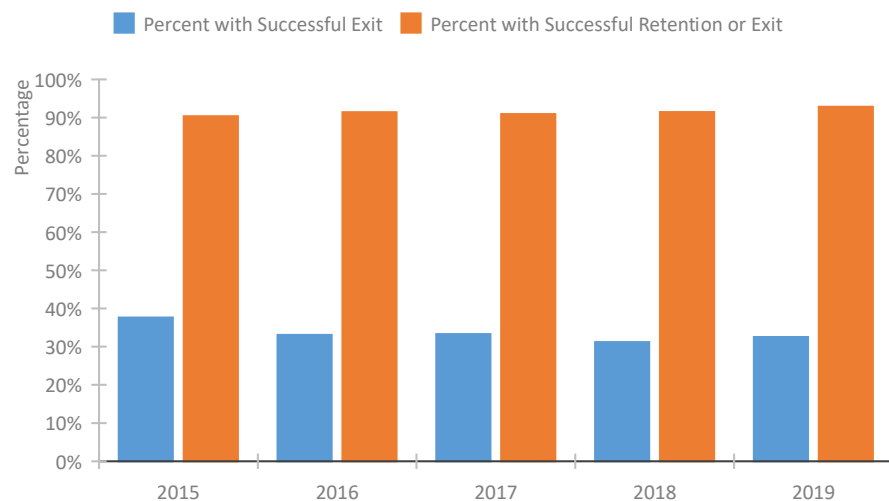


Homeless Population – Point-in-Time (PIT) Count

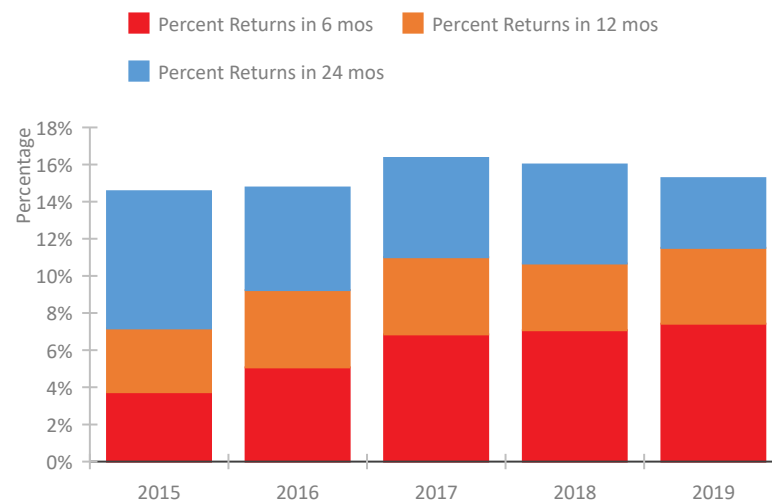


Minnesota Continuum of Care Performance Profile

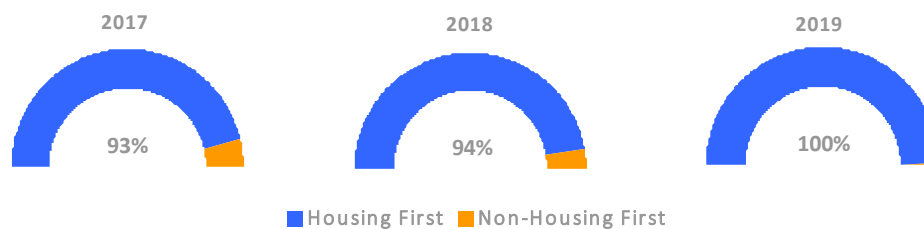
Exits to Permanent Housing by Program Type



Returns to Homelessness Over Time



Proportion of Housing First Projects by Year



Number of Projects by Year

	2017	2018	2019
Housing First Projects	194	185	599
Non-Housing First Projects	15	11	3

Data Summary: Minnesota

Point-In-Time Count Summary

	2015	2016	2017	2018	2019	2018-19 Change	% Change
Number of Sheltered Persons in Families	3,718	3,550	3,668	3,103	3,187	84	3%
Number of Unsheltered Persons in Families	206	122	101	147	204	57	39%
Number of Sheltered Individuals	2,987	2,902	2,892	3,019	3,137	118	4%
Number of Unsheltered Individuals	635	767	1,007	974	1,449	475	49%
Total Homeless Persons	7,546	7,341	7,668	7,243	7,977	734	10%
Number of Sheltered Families	1,121	1,034	1,110	935	968	33	4%
Number of Unsheltered Families	71	31	30	44	60	16	36%
Number of Total Families	1,192	1,065	1,140	979	1,028	49	5%
Sheltered Chronically Homeless Individuals	833	570	472	631	859	228	36%
Unsheltered Chronically Homeless Individuals	291	145	341	339	585	246	73%
Total Chronically Homeless Individuals	1,124	715	813	970	1,444	474	49%
Sheltered Veterans	253	248	244	250	234	-16	-6%
Unsheltered Veterans	44	31	37	51	63	12	24%
Total Veterans	297	279	281	301	297	-4	-1%
Sheltered Unaccompanied Youth (up to 24)	639	613	739	561	548	-13	-2%
Unsheltered Unaccompanied Youth (up to 24)	94	117	150	148	137	-11	-7%
Total Unaccompanied Youth (up to 24)	733	730	889	709	685	-24	-3%

System Performance Measures Summary

	2015	2016	2017	2018	2019	2018-19 Change	% Change
Rate People Return to Homelessness in 6 Months	3.7%	5.1%	6.9%	7.1%	7.4%	0.4%	N/A
Number of People who are Homeless for the First Time	20,652	20,208	19,241	18,838	14,730	-4,108	-21.8%
Rate People Exit from ES, SH, TH, and RRH to PH	37.7%	33.1%	33.3%	31.2%	32.6%	1.4%	N/A
Rate People in PSH and OPH Retain or Exit to PH	90.4%	91.4%	90.9%	91.4%	92.8%	1.4%	N/A

Housing Inventory Count Summary

	2015	2016	2017	2018	2019	2018-19 Change	% Change
Emergency Shelter (ES)	3,639	3,737	3,766	4,002	3,948	-54	-1%
Safe Haven (SH)	--	--	--	18	18	0	0%
Transitional Housing (TH)	3,140	3,134	3,247	2,640	2,390	-250	-9%
Permanent Supportive Housing (PSH)	12,372	12,256	10,877	10,464	10,973	509	5%
Rapid Re-Housing (RRH)	3,229	2,095	2,396	2,560	2,085	-475	-19%
Other Permanent Housing (OPH)	228	561	2,180	4,287	4,521	234	5%

Award Summary

	2015	2016	2017	2018	2019	2018-19 Change	% Change
Continuum of Care (CoC)	\$32,076,052	\$31,972,913	\$33,094,266	\$34,078,630	\$34,799,267	\$720,637	2%
Emergency Solutions Grants (ESG)	\$4,351,701	\$4,318,401	\$4,296,472	\$4,294,809	\$4,435,112	\$140,303	3%
Youth Homelessness Demonstration Program (YHDP)	N/A	--	\$1,405,047	--	--	--	--