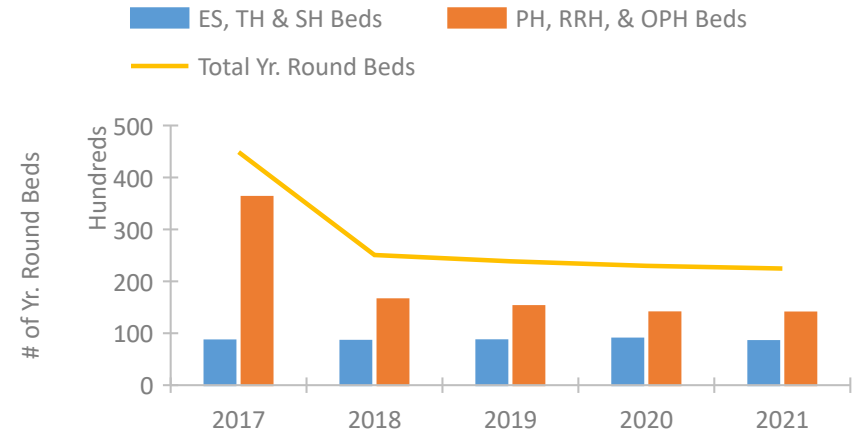


Michigan Continuum of Care Performance Profile

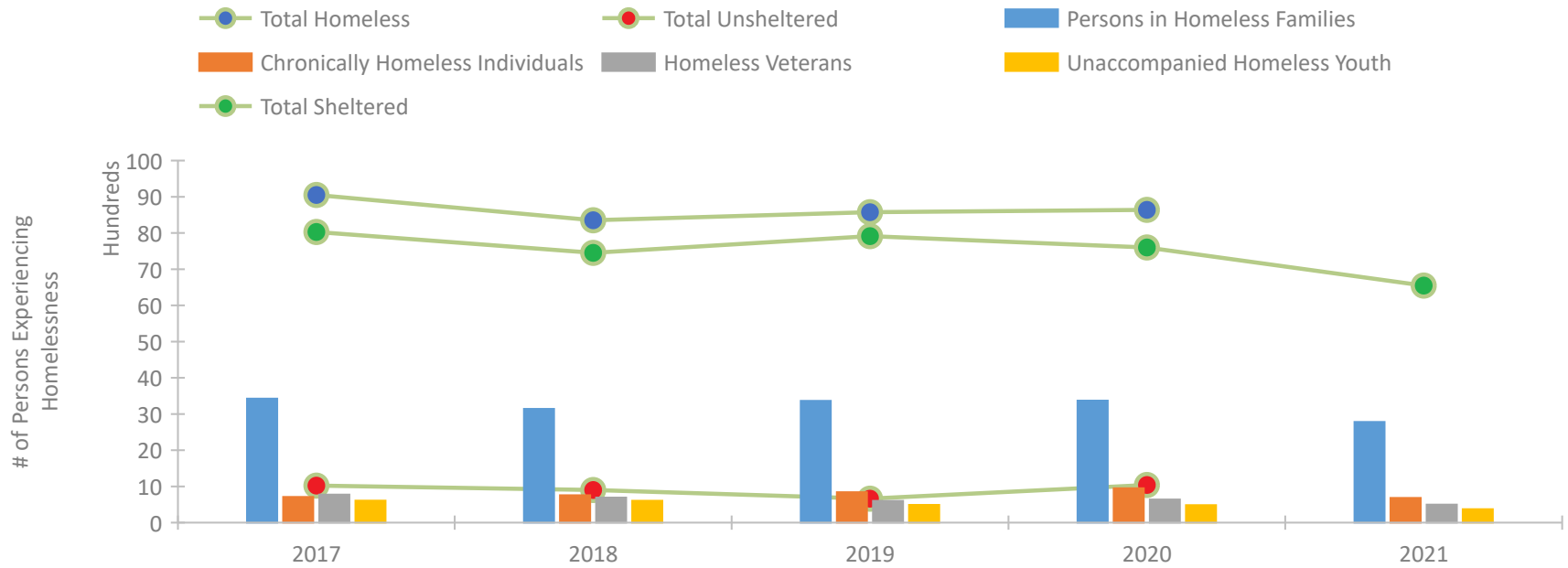


2021 CoC Boundaries 2020 CoC Boundaries

Housing Inventory Count by Program Type



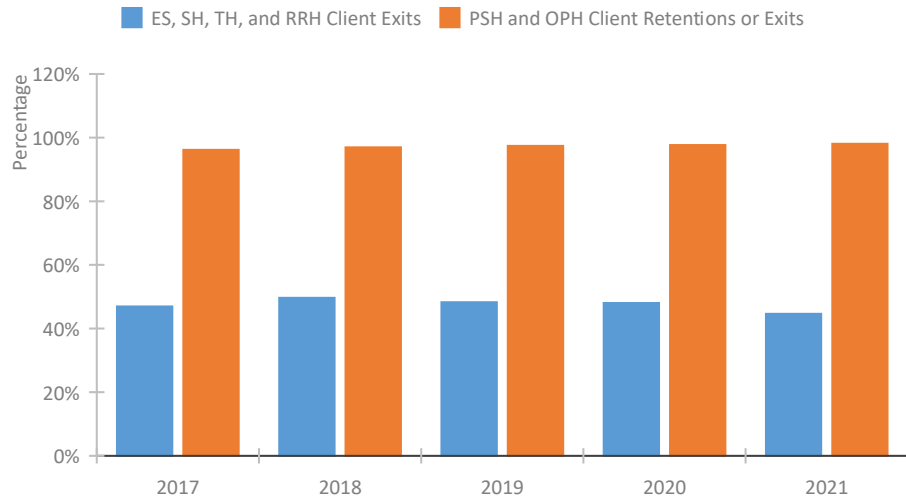
Homeless Population – Point-in-Time (PIT) Count*



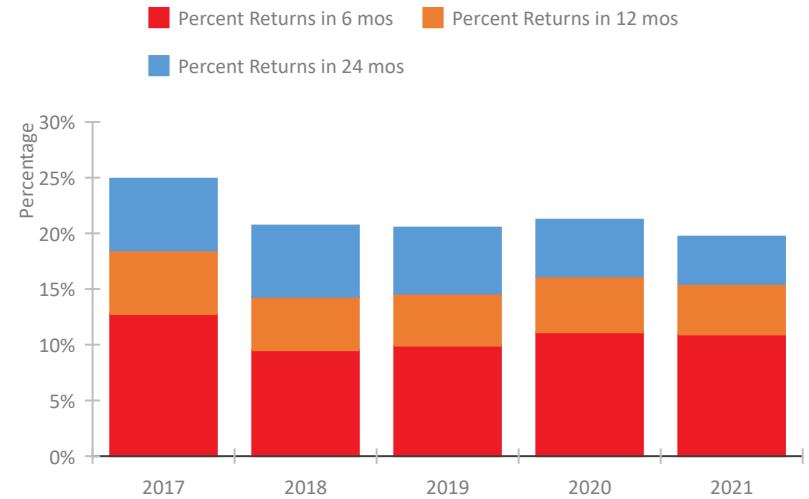
*In 2021, HUD gave communities the option to cancel or modify the unsheltered survey portion of their counts based on the potential risk of COVID-19 transmission associated with conducting an in-person survey. As a result, HUD has excluded the unsheltered population sub-totals and all unsheltered sub-population data for this reporting period. The user is cautioned that the unsheltered and total homeless counts reported here may be missing data.

Michigan Continuum of Care Performance Profile

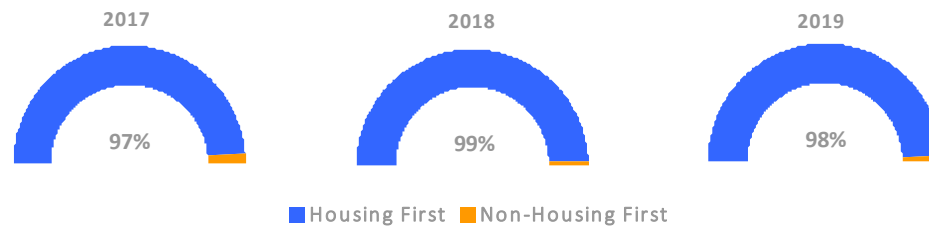
Exits to Permanent Housing by Program Type



Returns to Homelessness Over Time



Proportion of Housing First Projects by Year†



Number of Projects by Year			
	2017	2018	2019
Housing First Projects	437	360	253
Non-Housing First Projects	12	5	4

†2021 Data unavailable at the time of report publication. In 2020 HUD awarded renewal projects noncompetitively, therefore no new data was collected and Housing First data remains the same from 2019 to 2020.

Data Summary: Michigan

Point-In-Time Count Summary*

	2017	2018	2019	2020	2021	2020-21 Change	% Change
Number of Sheltered Persons in Families	3,313	3,062	3,297	3,240	2,778	-462	-14%
Number of Unsheltered Persons in Families	110	80	66	131	0	-131	-100%
Number of Sheltered Individuals	4,715	4,390	4,616	4,359	3,768	-591	-14%
Number of Unsheltered Individuals	913	819	596	908	--	--	--
Total Homeless Persons	9,051	8,351	8,575	8,638	6,546	-2,092	-24%
Number of Sheltered Families	1,026	938	1,000	989	852	-137	-14%
Number of Unsheltered Families	34	27	22	37	--	--	--
Number of Total Families	1,060	965	1,022	1,026	852	-174	-17%
Sheltered Chronically Homeless Individuals	482	583	689	676	683	7	1%
Unsheltered Chronically Homeless Individuals	227	173	150	271	--	--	--
Total Chronically Homeless Individuals	709	756	839	947	683	-264	-28%
Sheltered Veterans	713	646	574	594	495	-99	-17%
Unsheltered Veterans	60	47	25	45	--	--	--
Total Veterans	773	693	599	639	495	-144	-23%
Sheltered Unaccompanied Youth (up to 24)	539	534	461	433	370	-63	-15%
Unsheltered Unaccompanied Youth (up to 24)	69	70	28	51	--	--	--
Total Unaccompanied Youth (up to 24)	608	604	489	484	370	-114	-24%

System Performance Measures Summary

	2017	2018	2019	2020	2021	2020-21 Change	% Change
Rate People Return to Homelessness in 6 Months	12.8%	9.5%	9.9%	11.1%	10.9%	-0.2%	N/A
Number of People who are Homeless for the First Time	31,434	28,591	29,437	21,656	19,869	-1,787	-8.3%
Rate People Exit from ES, SH, TH, and RRH to PH	46.9%	49.6%	48.2%	48.0%	44.6%	-3.4%	N/A
Rate People in PSH and OPH Retain or Exit to PH	96.1%	97.0%	97.4%	97.6%	98.1%	0.4%	N/A

Housing Inventory Count Summary

	2017	2018	2019	2020	2021	2020-21 Change	% Change
Emergency Shelter (ES)	5,710	6,012	6,264	6,588	6,481	-107	-2%
Safe Haven (SH)	63	78	59	59	74	15	25%
Transitional Housing (TH)	2,851	2,441	2,307	2,317	1,929	-388	-17%
Permanent Supportive Housing (PSH)	10,913	9,662	11,032	9,031	9,183	152	2%
Rapid Re-Housing (RRH)	3,126	4,099	3,254	4,052	3,614	-438	-11%
Other Permanent Housing (OPH)	22,218	2,777	939	939	1,187	248	26%

Award Summary

	2017	2018	2019	2020	2021	2020-21 Change	% Change
Continuum of Care (CoC)	\$70,300,799	\$73,654,969	\$77,653,172	\$81,841,586	\$86,593,383	\$4,751,797	6%
Emergency Solutions Grants (ESG)	\$10,565,135	\$10,004,007	\$10,361,343	\$10,723,633	\$10,657,936	(\$65,697)	-1%
Youth Homelessness Demonstration Program (YHDP)	--	--	\$5,596,021	--	\$2,477,852	--	--

*In 2021, HUD gave communities the option to cancel or modify the unsheltered survey portion of their counts based on the potential risk of COVID-19 transmission associated with conducting an in-person survey. As a result, HUD has excluded the unsheltered population sub-totals and all unsheltered sub-population data for this reporting period. The user is cautioned that the unsheltered and total homeless counts reported here may be missing data.