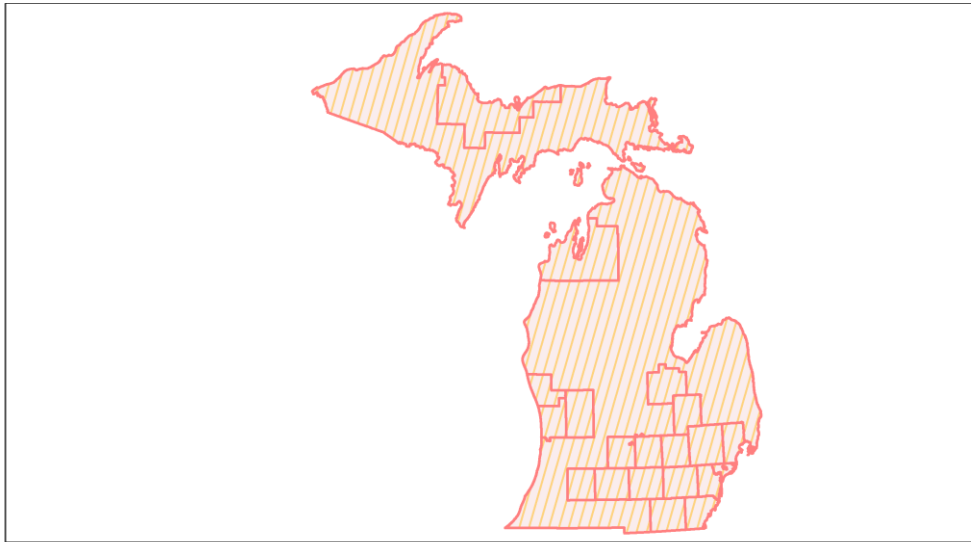
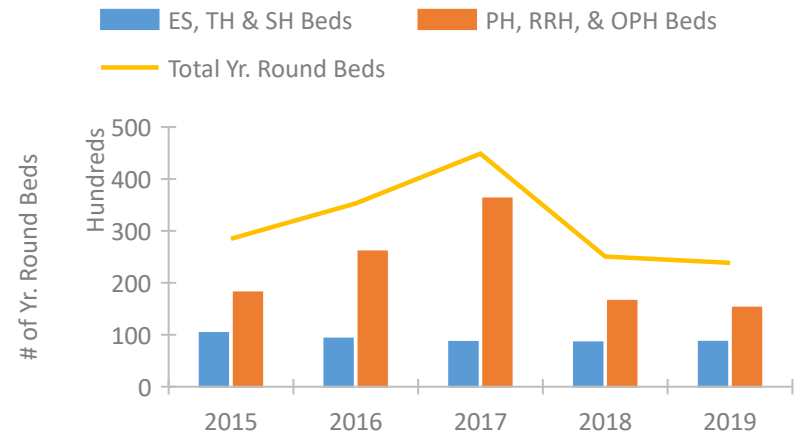


Michigan Continuum of Care Performance Profile

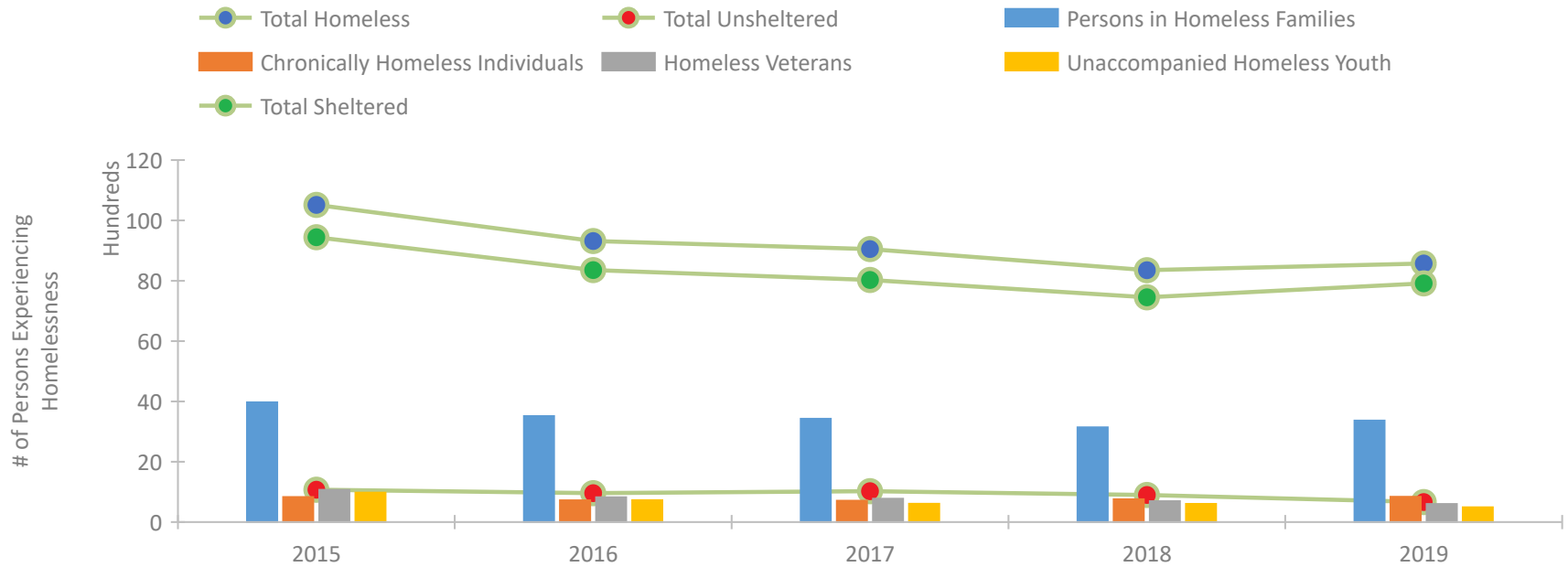


2019 CoC Boundaries 2018 CoC Boundaries

Housing Inventory Count by Program Type

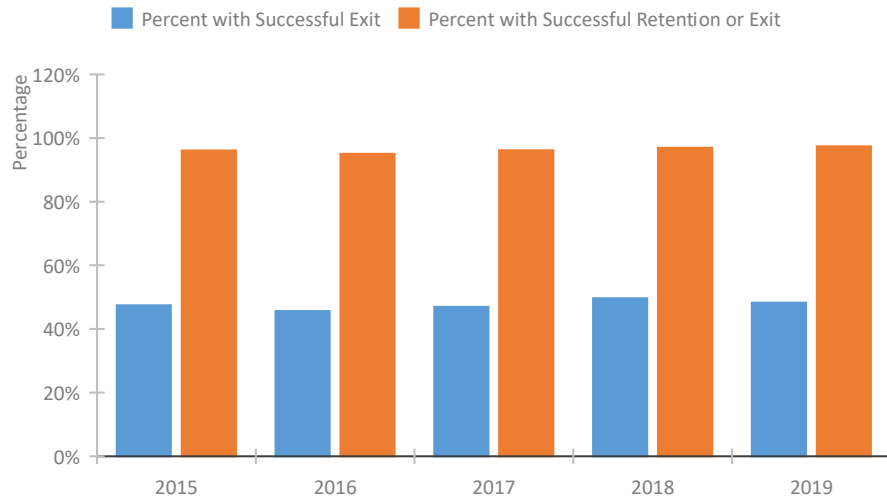


Homeless Population – Point-in-Time (PIT) Count

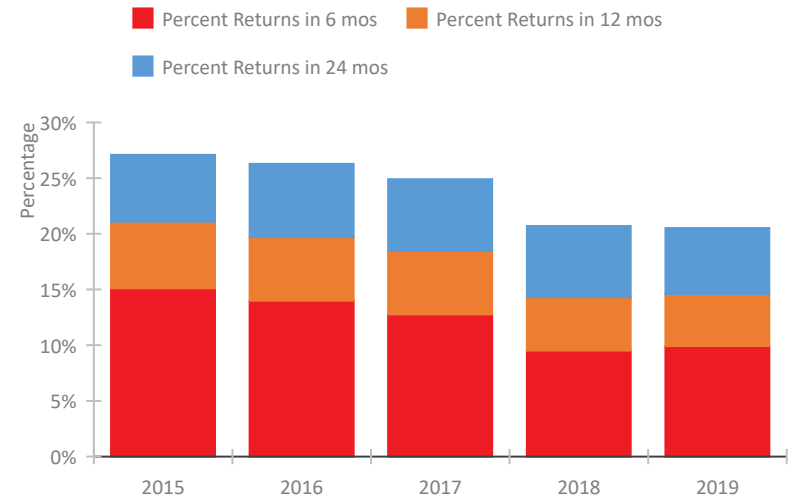


Michigan Continuum of Care Performance Profile

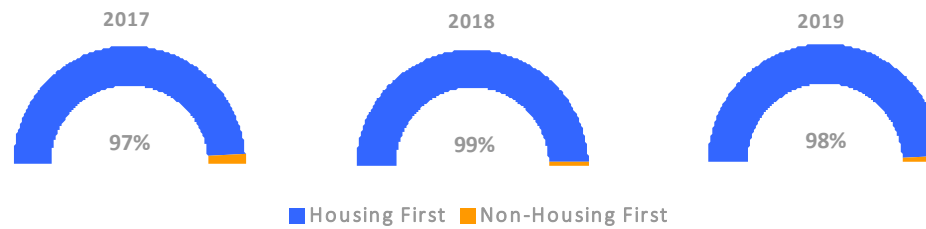
Exits to Permanent Housing by Program Type



Returns to Homelessness Over Time



Proportion of Housing First Projects by Year



Number of Projects by Year

	2017	2018	2019
Housing First Projects	437	360	253
Non-Housing First Projects	12	5	4

Data Summary: Michigan

Point-In-Time Count Summary

	2015	2016	2017	2018	2019	2018-19 Change	% Change
Number of Sheltered Persons in Families	3,891	3,383	3,313	3,062	3,297	235	8%
Number of Unsheltered Persons in Families	79	130	110	80	66	-14	-18%
Number of Sheltered Individuals	5,553	4,973	4,715	4,390	4,616	226	5%
Number of Unsheltered Individuals	993	830	913	819	596	-223	-27%
Total Homeless Persons	10,516	9,316	9,051	8,351	8,575	224	3%
Number of Sheltered Families	1,261	1,073	1,026	938	1,000	62	7%
Number of Unsheltered Families	24	36	34	27	22	-5	-19%
Number of Total Families	1,285	1,109	1,060	965	1,022	57	6%
Sheltered Chronically Homeless Individuals	519	525	482	583	689	106	18%
Unsheltered Chronically Homeless Individuals	311	194	227	173	150	-23	-13%
Total Chronically Homeless Individuals	830	719	709	756	839	83	11%
Sheltered Veterans	991	758	713	646	574	-72	-11%
Unsheltered Veterans	76	64	60	47	25	-22	-47%
Total Veterans	1,067	822	773	693	599	-94	-14%
Sheltered Unaccompanied Youth (up to 24)	880	624	539	534	461	-73	-14%
Unsheltered Unaccompanied Youth (up to 24)	95	101	69	70	28	-42	-60%
Total Unaccompanied Youth (up to 24)	975	725	608	604	489	-115	-19%

System Performance Measures Summary

	2015	2016	2017	2018	2019	2018-19 Change	% Change
Rate People Return to Homelessness in 6 Months	15.1%	14.0%	12.8%	9.5%	9.9%	0.4%	N/A
Number of People who are Homeless for the First Time	32,443	32,053	31,434	28,591	29,437	846	3%
Rate People Exit from ES, SH, TH, and RRH to PH	47.4%	45.6%	46.9%	49.6%	48.2%	-1.4%	N/A
Rate People in PSH and OPH Retain or Exit to PH	96.1%	95.0%	96.1%	97.0%	97.4%	0.5%	N/A

Housing Inventory Count Summary

	2015	2016	2017	2018	2019	2018-19 Change	% Change
Emergency Shelter (ES)	5,634	5,549	5,710	6,012	6,264	252	4%
Safe Haven (SH)	81	82	63	78	59	-19	-24%
Transitional Housing (TH)	4,622	3,630	2,851	2,441	2,307	-134	-5%
Permanent Supportive Housing (PSH)	8,026	9,997	10,913	9,662	11,032	1,370	14%
Rapid Re-Housing (RRH)	1,729	2,124	3,126	4,099	3,254	-845	-21%
Other Permanent Housing (OPH)	8,395	13,763	22,218	2,777	939	-1,838	-66%

Award Summary

	2015	2016	2017	2018	2019	2018-19 Change	% Change
Continuum of Care (CoC)	\$70,004,211	\$66,900,360	\$70,300,799	\$73,654,969	\$77,653,172	\$3,998,203	5%
Emergency Solutions Grants (ESG)	\$10,097,444	\$10,068,382	\$10,565,135	\$10,004,007	\$10,361,343	\$357,336	4%
Youth Homelessness Demonstration Program (YHDP)	N/A	\$1,306,943	--	--	--	--	--