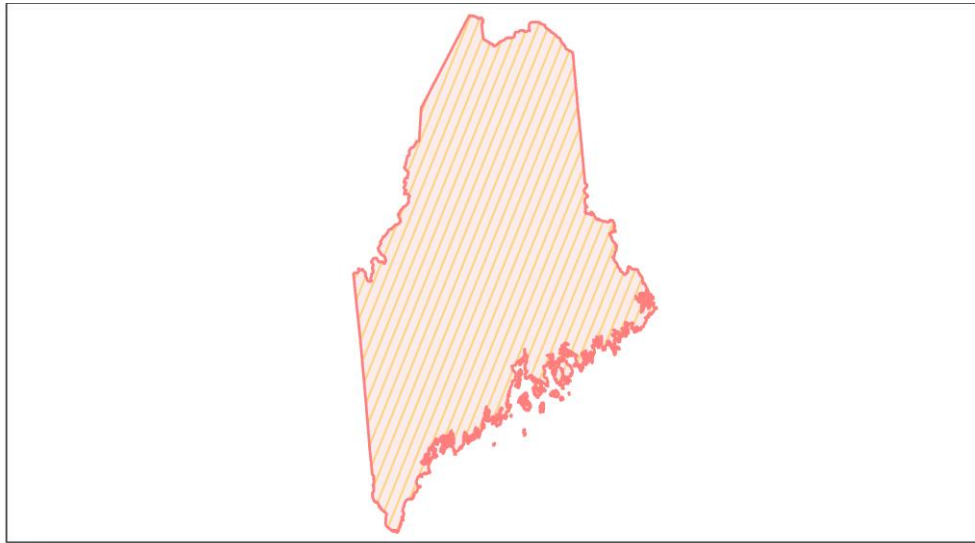
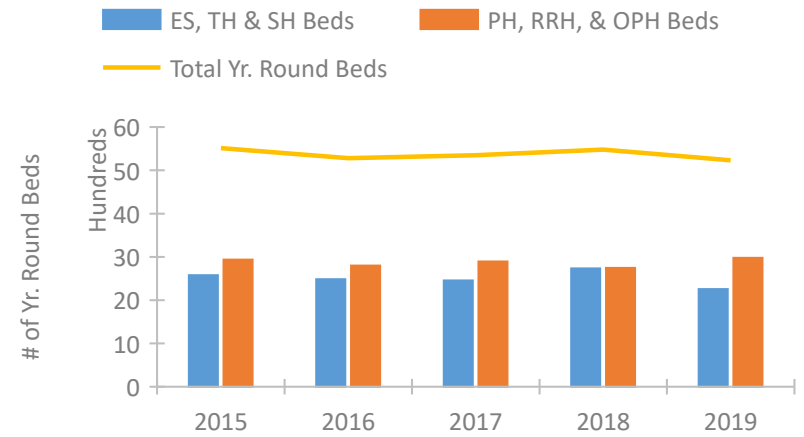


## Maine Continuum of Care Performance Profile

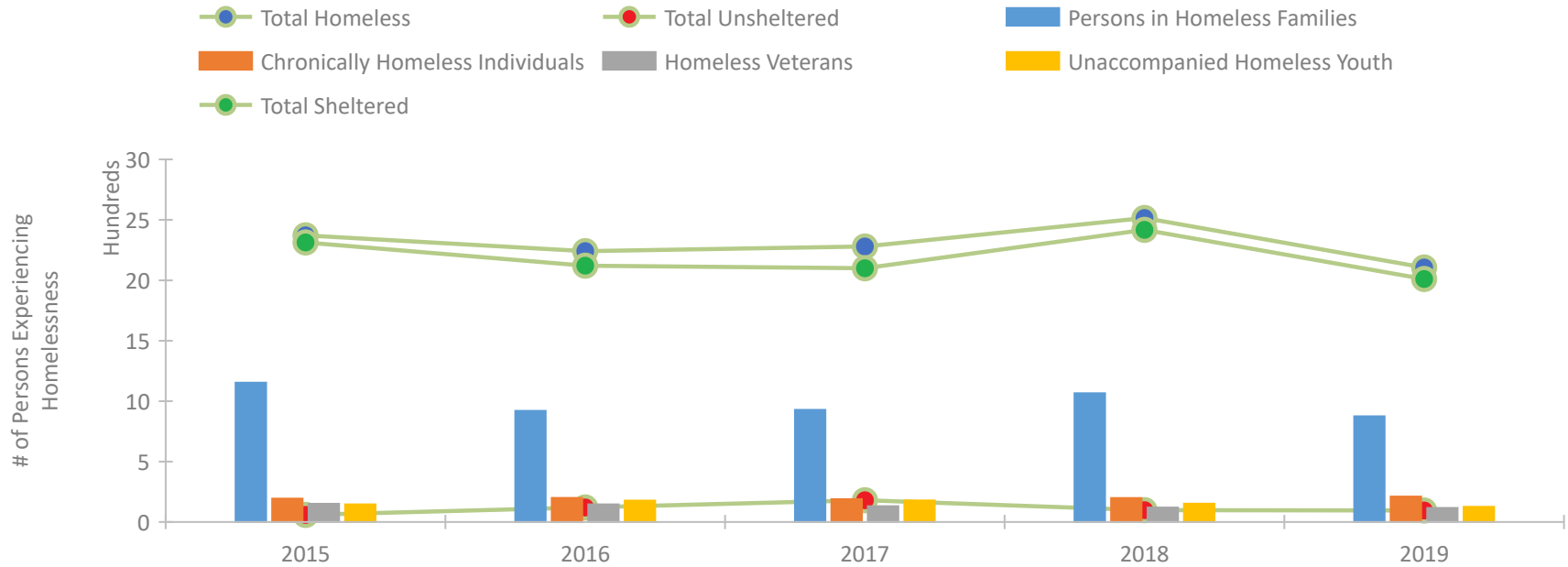


2019 CoC Boundaries 2018 CoC Boundaries

### Housing Inventory Count by Program Type

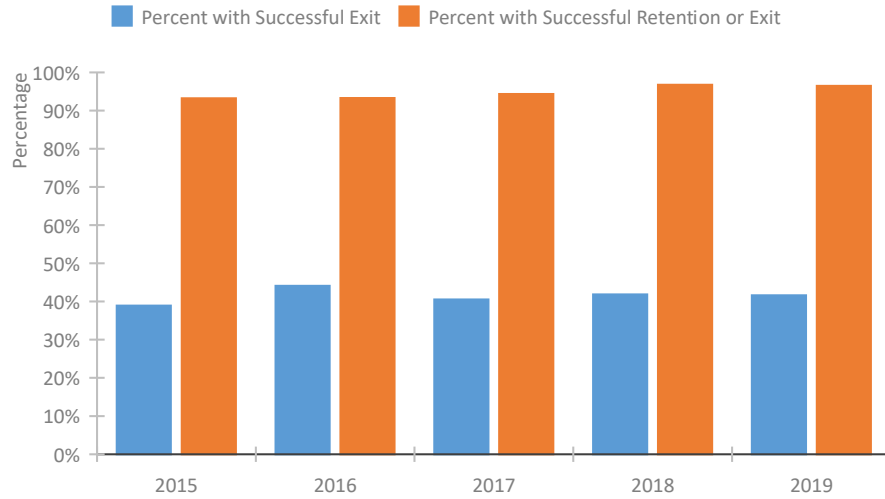


### Homeless Population – Point-in-Time (PIT) Count

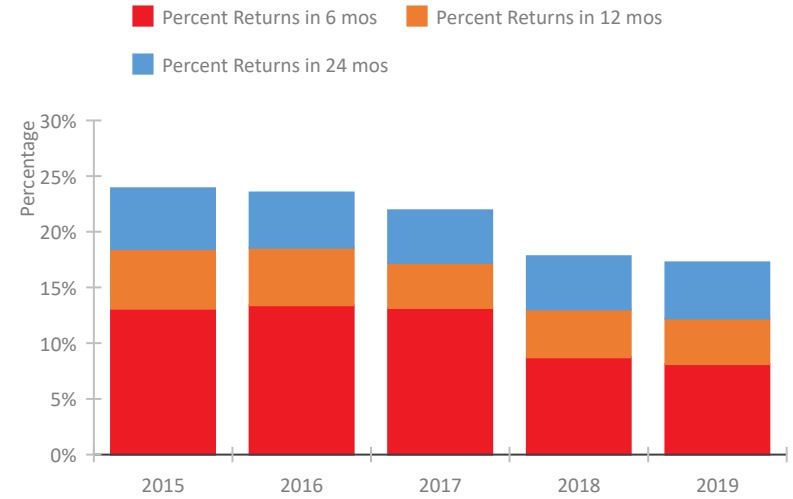


## Maine Continuum of Care Performance Profile

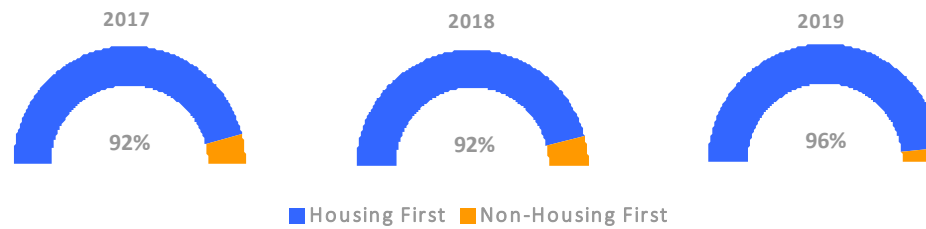
### Exits to Permanent Housing by Program Type



### Returns to Homelessness Over Time



### Proportion of Housing First Projects by Year



### Number of Projects by Year

	2017	2018	2019
Housing First Projects	36	34	25
Non-Housing First Projects	3	3	1

## Data Summary: Maine

### Point-In-Time Count Summary

	2015	2016	2017	2018	2019	2018-19 Change	% Change
Number of Sheltered Persons in Families	1,143	906	856	1,059	871	-188	-18%
Number of Unsheltered Persons in Families	10	14	72	7	3	-4	-57%
Number of Sheltered Individuals	1,170	1,215	1,244	1,359	1,140	-219	-16%
Number of Unsheltered Individuals	49	106	108	91	92	1	1%
<b>Total Homeless Persons</b>	<b>2,372</b>	<b>2,241</b>	<b>2,280</b>	<b>2,516</b>	<b>2,106</b>	<b>-410</b>	<b>-16%</b>
Number of Sheltered Families	355	292	286	339	282	-57	-17%
Number of Unsheltered Families	3	5	21	2	1	-1	-50%
<b>Number of Total Families</b>	<b>358</b>	<b>297</b>	<b>307</b>	<b>341</b>	<b>283</b>	<b>-58</b>	<b>-17%</b>
Sheltered Chronically Homeless Individuals	179	156	189	197	178	-19	-10%
Unsheltered Chronically Homeless Individuals	14	43	0	1	33	32	3200%
<b>Total Chronically Homeless Individuals</b>	<b>193</b>	<b>199</b>	<b>189</b>	<b>198</b>	<b>211</b>	<b>13</b>	<b>7%</b>
Sheltered Veterans	142	125	120	106	108	2	2%
Unsheltered Veterans	9	21	11	13	8	-5	-38%
<b>Total Veterans</b>	<b>151</b>	<b>146</b>	<b>131</b>	<b>119</b>	<b>116</b>	<b>-3</b>	<b>-3%</b>
Sheltered Unaccompanied Youth (up to 24)	145	161	143	143	112	-31	-22%
Unsheltered Unaccompanied Youth (up to 24)	1	16	35	9	13	4	44%
<b>Total Unaccompanied Youth (up to 24)</b>	<b>146</b>	<b>177</b>	<b>178</b>	<b>152</b>	<b>125</b>	<b>-27</b>	<b>-18%</b>

### System Performance Measures Summary

	2015	2016	2017	2018	2019	2018-19 Change	% Change
Rate People Return to Homelessness in 6 Months	13.1%	13.4%	13.2%	8.7%	8.1%	-0.6%	N/A
Number of People who are Homeless for the First Time	4,759	4,015	4,450	4,346	3,912	-434	-10%
Rate People Exit from ES, SH, TH, and RRH to PH	38.9%	44.1%	40.5%	41.9%	41.6%	-0.3%	N/A
Rate People in PSH and OPH Retain or Exit to PH	93.2%	93.3%	94.3%	96.8%	96.5%	-0.3%	N/A

### Housing Inventory Count Summary

	2015	2016	2017	2018	2019	2018-19 Change	% Change
Emergency Shelter (ES)	1,204	1,274	1,217	1,225	1,222	-3	0%
Safe Haven (SH)	15	15	15	15	15	0	0%
Transitional Housing (TH)	1,357	1,195	1,225	1,494	1,017	-477	-32%
Permanent Supportive Housing (PSH)	2,764	2,561	2,500	2,360	2,532	172	7%
Rapid Re-Housing (RRH)	173	79	369	298	331	33	11%
Other Permanent Housing (OPH)	--	157	24	89	115	26	29%

### Award Summary

	2015	2016	2017	2018	2019	2018-19 Change	% Change
<b>Continuum of Care (CoC)</b>	\$11,977,853	\$11,810,751	\$12,932,975	\$13,091,730	\$13,792,998	\$701,268	5%
<b>Emergency Solutions Grants (ESG)</b>	\$1,491,234	\$1,483,975	\$1,472,565	\$1,460,637	\$1,513,327	\$52,690	4%
<b>Youth Homelessness Demonstration Program (YHDP)</b>	N/A	--	--	\$3,354,677	--	--	--