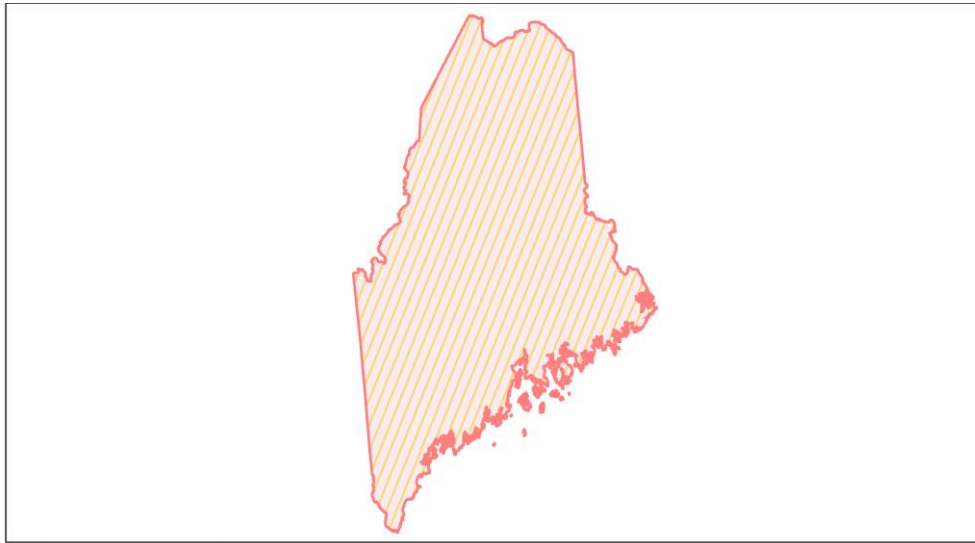
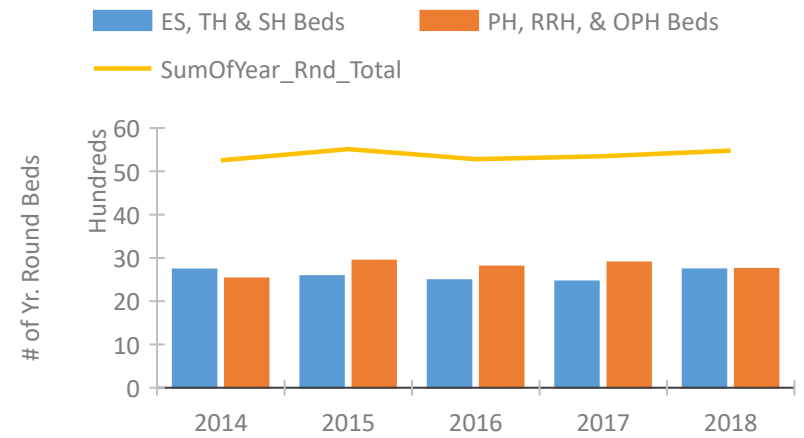


Maine Continuum of Care Performance Profile

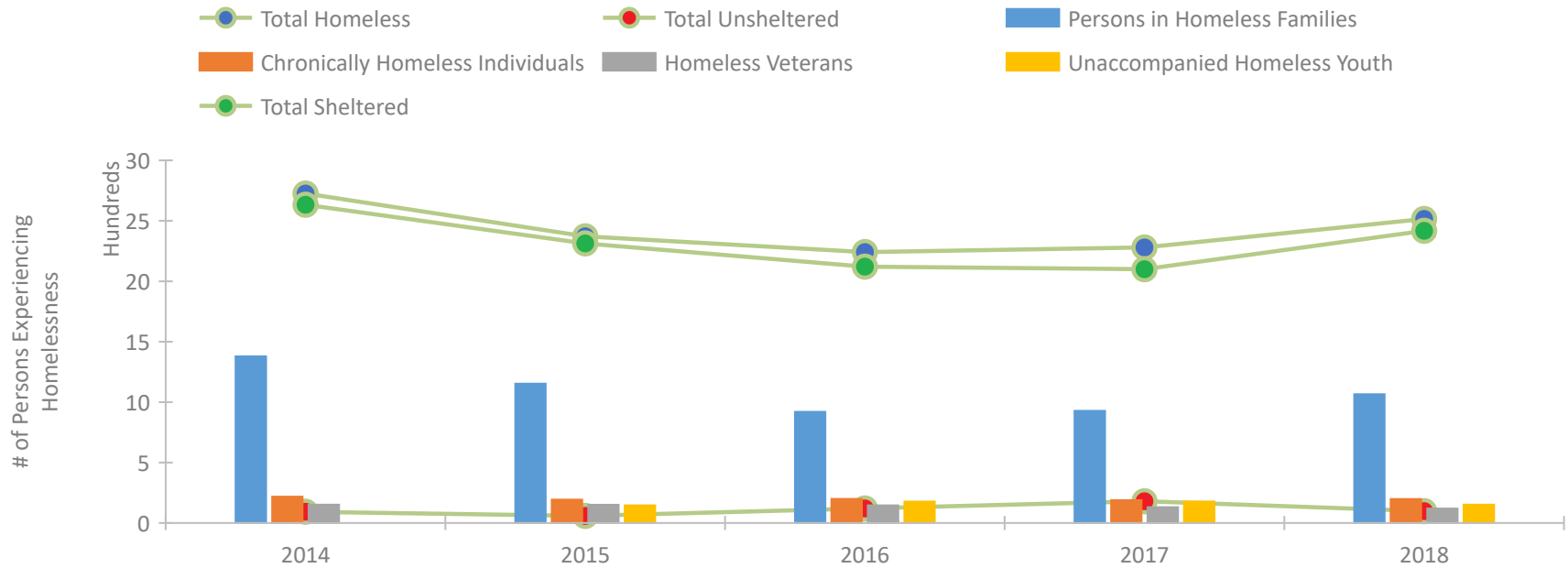


2018 CoC Boundaries 2017 CoC Boundaries

Housing Inventory Count by Program Type



Homeless Population – Point-in-Time (PIT) Count

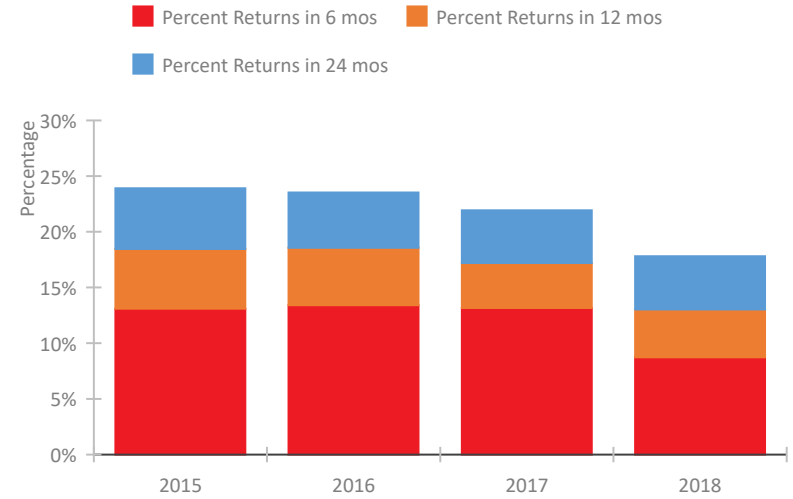


Maine Continuum of Care Performance Profile

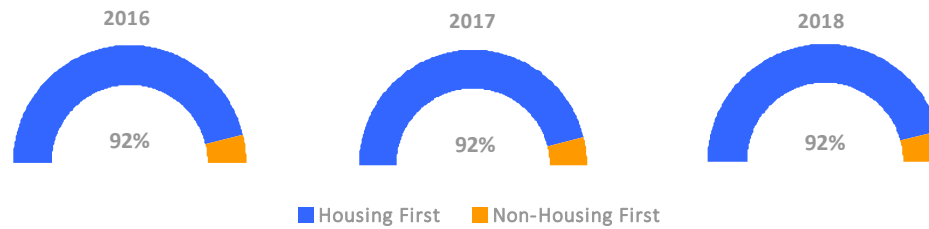
Exits to Permanent Housing by Program Type



Returns to Homelessness Over Time



Proportion of Housing First Projects by Year



Number of Projects by Year

	2016	2017	2018
Housing First Projects	35	36	34
Non-Housing First Projects	3	3	3

Data Summary: Maine

Point-In-Time Count Summary

	2014	2015	2016	2017	2018	2017-18 Change	% Change
Number of Sheltered Persons in Families	1,351	1,143	906	856	1,059	203	24%
Number of Unsheltered Persons in Families	27	10	14	72	7	-65	-90%
Number of Sheltered Individuals	1,254	1,152	1,181	1,226	1,344	118	10%
Number of Unsheltered Individuals	66	49	104	94	91	-3	-3%
Total Homeless Persons	2,698	2,354	2,205	2,248	2,501	253	11%
Number of Sheltered Families	376	355	292	286	339	53	19%
Number of Unsheltered Families	12	3	5	21	2	-19	-90%
Number of Total Families	388	358	297	307	341	34	11%
Sheltered Chronically Homeless Individuals	200	179	156	189	197	8	4%
Unsheltered Chronically Homeless Individuals	18	14	43	0	1	1	100%
Total Chronically Homeless Individuals	218	193	199	189	198	9	5%
Sheltered Veterans	138	142	125	120	106	-14	-12%
Unsheltered Veterans	14	9	21	11	13	2	18%
Total Veterans	152	151	146	131	119	-12	-9%
Sheltered Unaccompanied Youth (up to 24)	--	145	161	143	143	0	0%
Unsheltered Unaccompanied Youth (up to 24)	--	1	16	35	9	-26	-74%
Total Unaccompanied Youth (up to 24)	--	146	177	178	152	-26	-15%

System Performance Measures Summary

	2014	2015	2016	2017	2018	2017-18 Change	% Change
Rate People Return to Homelessness in 6 Months	N/A	13.1%	13.4%	13.2%	8.7%	-4.4%	N/A
Number of People who are Homeless for the First Time	N/A	4,759	4,015	4,450	4,346	-104	-2.3%
Rate People Exit from ES, SH, TH, and RRH to PH	N/A	38.9%	44.1%	40.5%	41.9%	1.3%	N/A
Rate People in PSH and OPH Retain or Exit to PH	N/A	93.2%	93.3%	94.3%	96.8%	2.4%	N/A

Housing Inventory Count Summary

	2014	2015	2016	2017	2018	2017-18 Change	% Change
Emergency Shelter (ES)	1,184	1,204	1,274	1,217	1,225	8	1%
Safe Haven (SH)	15	15	15	15	15	0	0%
Transitional Housing (TH)	1,531	1,357	1,195	1,225	1,494	269	22%
Permanent Supportive Housing (PSH)	2,464	2,764	2,561	2,500	2,360	-140	-6%
Rapid Re-Housing (RRH)	60	173	79	369	298	-71	-19%
Other Permanent Housing (OPH)	--	--	157	24	89	65	271%

Award Summary

	2014	2015	2016	2017	2018	2017-18 Change	% Change
Continuum of Care (CoC)	\$10,408,035	\$11,977,853	\$11,810,751	\$12,932,975	\$13,091,730	\$158,755	1%
Emergency Solutions Grants (ESG)	\$1,235,790	\$1,329,400	\$1,483,975	\$1,472,565	\$1,460,637	(\$11,928)	-1%
Youth Homelessness Demonstration Program (YHDP)	N/A	N/A	--	--	\$3,354,677	--	--