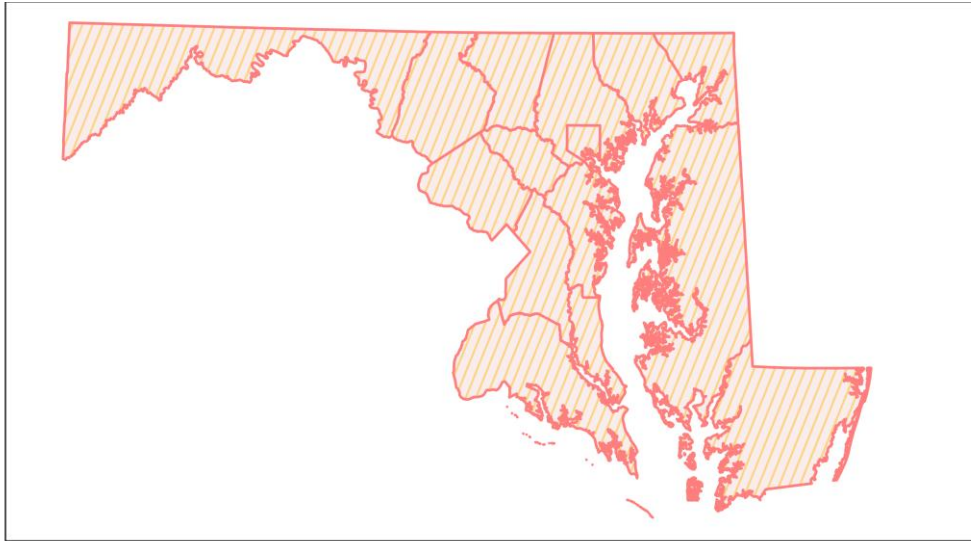
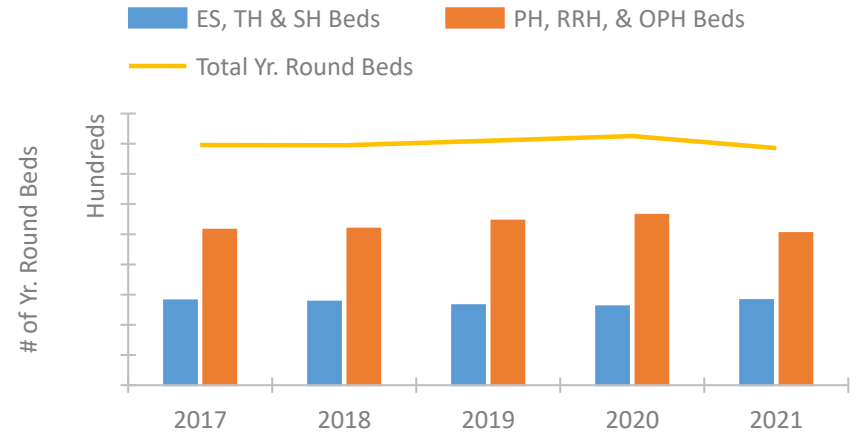


Maryland Continuum of Care Performance Profile

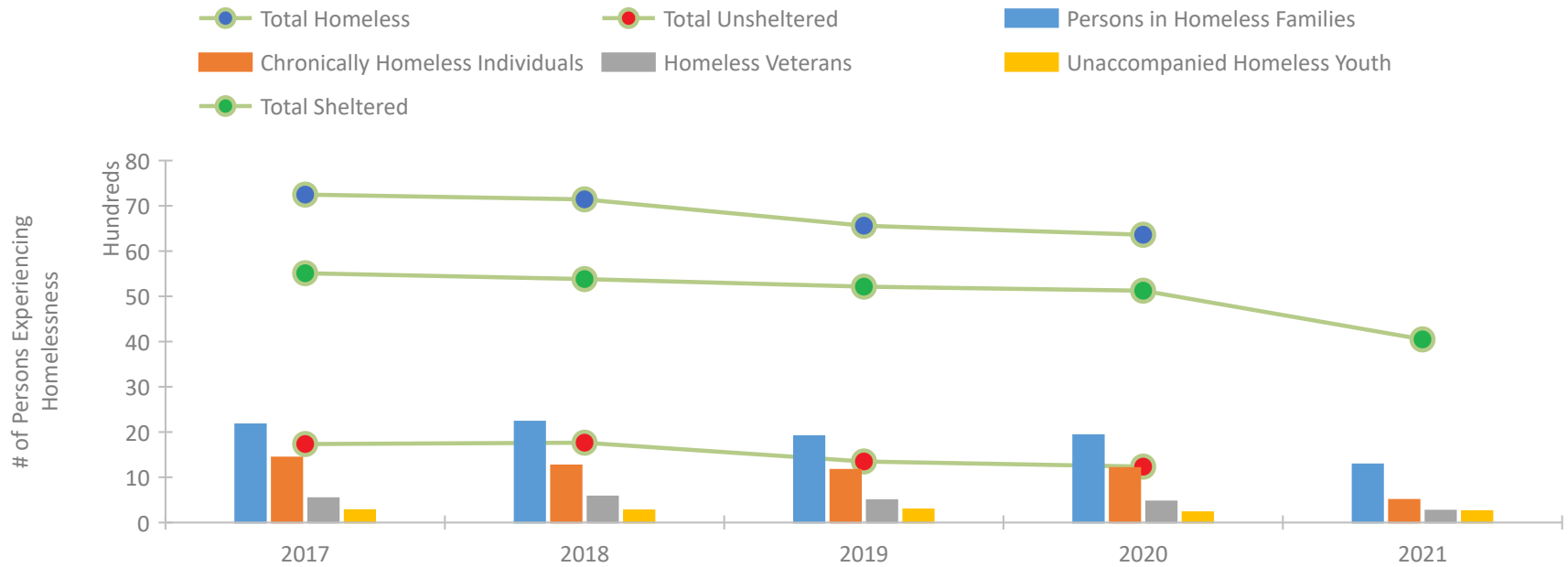


2021 CoC Boundaries 2020 CoC Boundaries

Housing Inventory Count by Program Type



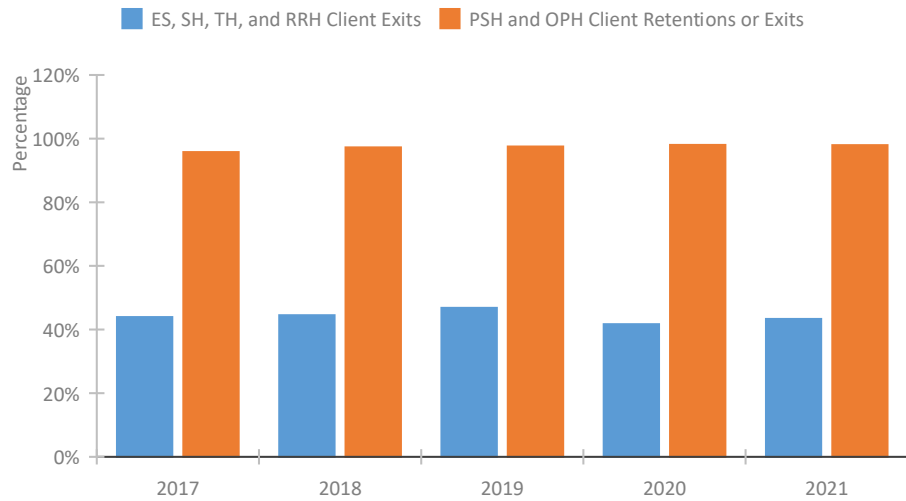
Homeless Population – Point-in-Time (PIT) Count*



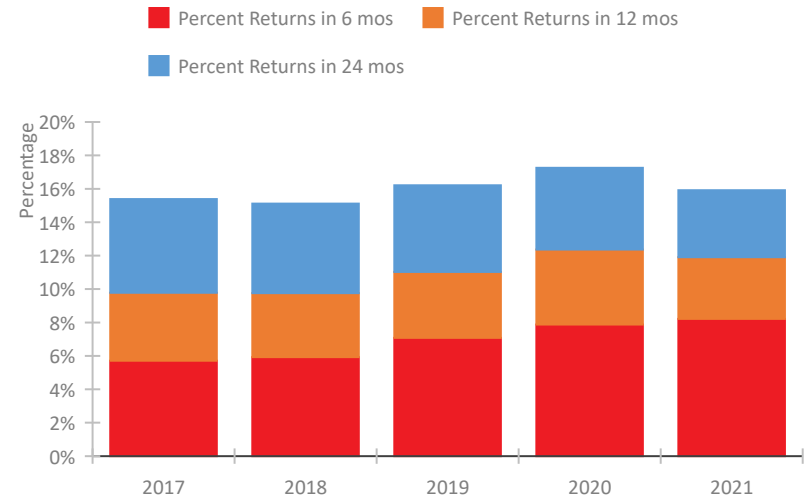
*In 2021, HUD gave communities the option to cancel or modify the unsheltered survey portion of their counts based on the potential risk of COVID-19 transmission associated with conducting an in-person survey. As a result, HUD has excluded the unsheltered population sub-totals and all unsheltered sub-population data for this reporting period. The user is cautioned that the unsheltered and total homeless counts reported here may be missing data.

Maryland Continuum of Care Performance Profile

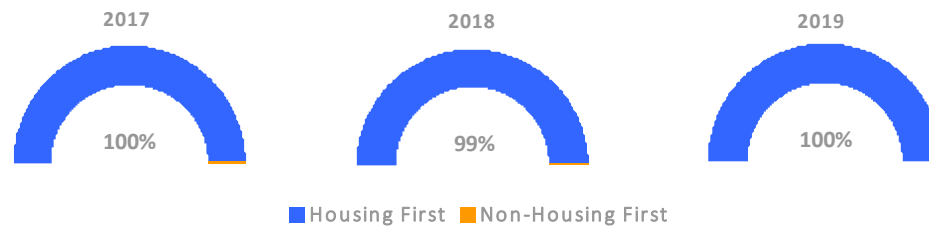
Exits to Permanent Housing by Program Type



Returns to Homelessness Over Time



Proportion of Housing First Projects by Year†



Number of Projects by Year

	2017	2018	2019
Housing First Projects	261	174	159
Non-Housing First Projects	1	1	0

†2021 Data unavailable at the time of report publication. In 2020 HUD awarded renewal projects noncompetitively, therefore no new data was collected and Housing First data remains the same from 2019 to 2020.

Data Summary: Maryland

Point-In-Time Count Summary*

	2017	2018	2019	2020	2021	2020-21 Change	% Change
Number of Sheltered Persons in Families	2,002	1,998	1,776	1,774	1,284	-490	-28%
Number of Unsheltered Persons in Families	168	232	133	156	0	-156	-100%
Number of Sheltered Individuals	3,509	3,382	3,437	3,350	2,764	-586	-17%
Number of Unsheltered Individuals	1,568	1,532	1,215	1,080	--	--	--
Total Homeless Persons	7,247	7,144	6,561	6,360	4,048	-2,312	-36%
Number of Sheltered Families	635	640	564	570	393	-177	-31%
Number of Unsheltered Families	46	59	39	46	--	--	--
Number of Total Families	681	699	603	616	393	-223	-36%
Sheltered Chronically Homeless Individuals	746	608	617	717	500	-217	-30%
Unsheltered Chronically Homeless Individuals	690	651	547	486	--	--	--
Total Chronically Homeless Individuals	1,436	1,259	1,164	1,203	500	-703	-58%
Sheltered Veterans	440	470	411	392	261	-131	-33%
Unsheltered Veterans	96	104	79	72	--	--	--
Total Veterans	536	574	490	464	261	-203	-44%
Sheltered Unaccompanied Youth (up to 24)	179	175	179	186	252	66	35%
Unsheltered Unaccompanied Youth (up to 24)	93	92	111	41	--	--	--
Total Unaccompanied Youth (up to 24)	272	267	290	227	252	25	11%

System Performance Measures Summary

	2017	2018	2019	2020	2021	2020-21 Change	% Change
Rate People Return to Homelessness in 6 Months	5.7%	5.9%	7.1%	7.9%	8.2%	0.3%	N/A
Number of People who are Homeless for the First Time	13,060	12,854	12,650	9,320	9,017	-303	-3.3%
Rate People Exit from ES, SH, TH, and RRH to PH	43.9%	44.5%	46.8%	41.7%	43.3%	1.6%	N/A
Rate People in PSH and OPH Retain or Exit to PH	95.8%	97.2%	97.5%	98.0%	98.0%	-0.1%	N/A

Housing Inventory Count Summary

	2017	2018	2019	2020	2021	2020-21 Change	% Change
Emergency Shelter (ES)	3,334	3,470	3,444	3,450	3,966	516	15%
Safe Haven (SH)	85	89	89	59	35	-24	-41%
Transitional Housing (TH)	2,197	1,970	1,770	1,712	1,633	-79	-5%
Permanent Supportive Housing (PSH)	8,458	7,194	7,368	7,924	7,947	23	0%
Rapid Re-Housing (RRH)	1,412	1,262	1,542	1,439	1,575	136	9%
Other Permanent Housing (OPH)	427	1,911	1,986	1,926	554	-1,372	-71%

Award Summary

	2017	2018	2019	2020	2021	2020-21 Change	% Change
Continuum of Care (CoC)	\$50,221,552	\$53,385,248	\$52,440,084	\$53,840,535	\$57,746,881	\$3,906,346	7%
Emergency Solutions Grants (ESG)	\$6,616,093	\$4,082,519	\$4,266,548	\$4,468,328	\$4,475,657	\$7,329	0%
Youth Homelessness Demonstration Program (YHDP)	--	\$7,182,272	--	--	--	--	--

*In 2021, HUD gave communities the option to cancel or modify the unsheltered survey portion of their counts based on the potential risk of COVID-19 transmission associated with conducting an in-person survey. As a result, HUD has excluded the unsheltered population sub-totals and all unsheltered sub-population data for this reporting period. The user is cautioned that the unsheltered and total homeless counts reported here may be missing data.