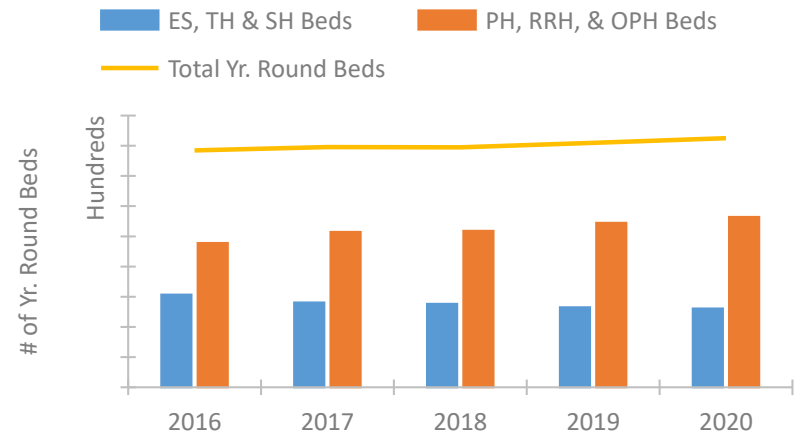


## Maryland Continuum of Care Performance Profile

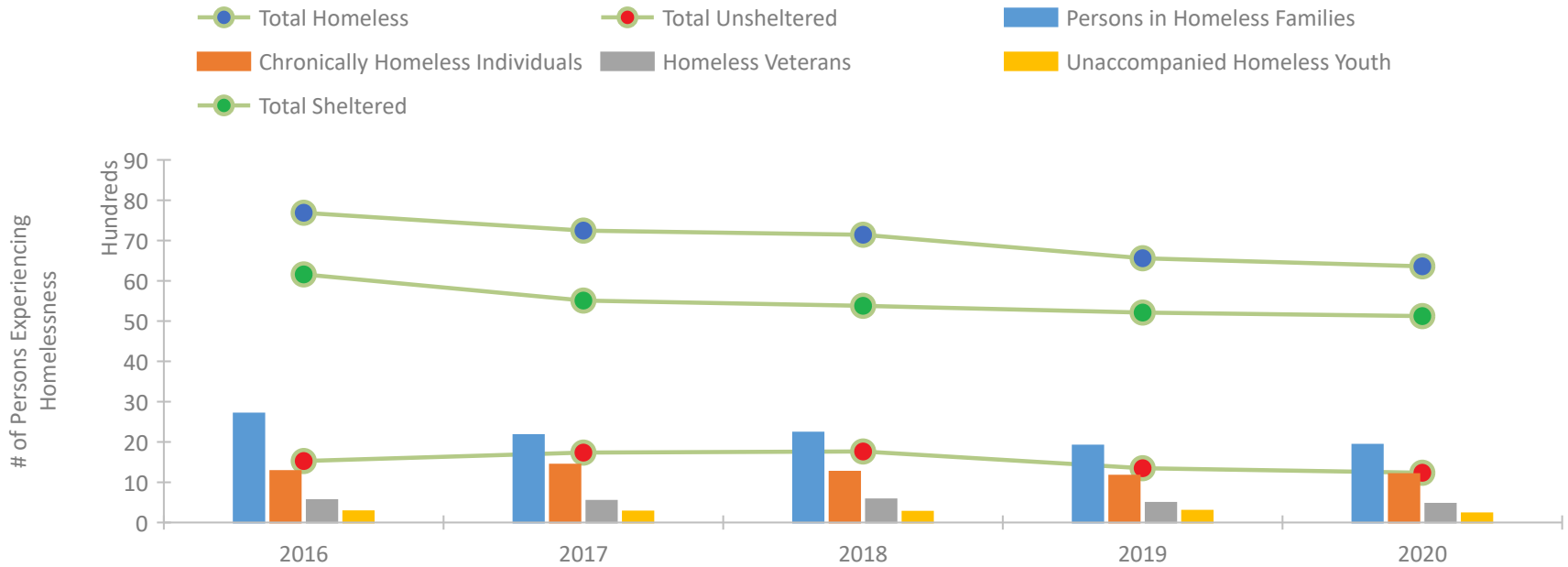


2020 CoC Boundaries 2019 CoC Boundaries

### Housing Inventory Count by Program Type

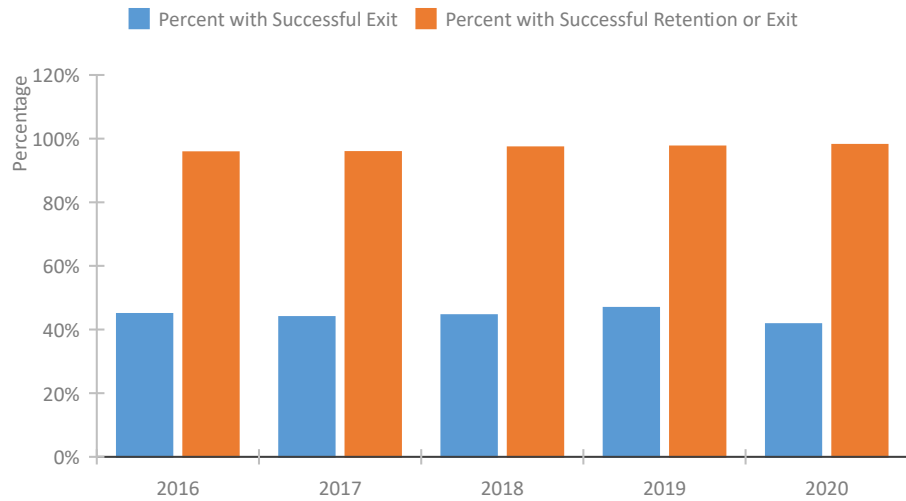


### Homeless Population – Point-in-Time (PIT) Count

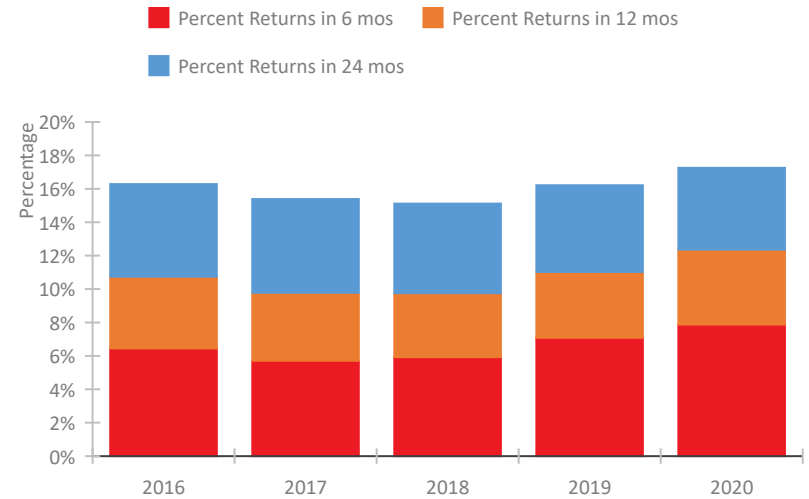


## Maryland Continuum of Care Performance Profile

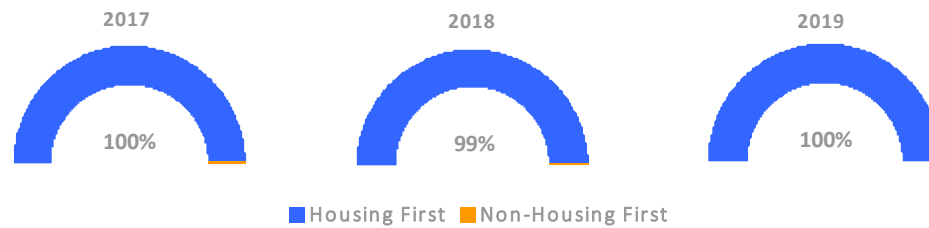
### Exits to Permanent Housing by Program Type



### Returns to Homelessness Over Time



### Proportion of Housing First Projects by Year\*



Number of Projects by Year			
	2017	2018	2019
Housing First Projects	261	174	159
Non-Housing First Projects	1	1	0

\*In 2020 HUD awarded renewal projects noncompetitively, therefore no new data was collected and Housing First data remains the same from 2019 to 2020.

## Data Summary: Maryland

### Point-In-Time Count Summary

	2016	2017	2018	2019	2020	2019-20 Change	% Change
Number of Sheltered Persons in Families	2,410	2,002	1,998	1,776	1,774	-2	-0%
Number of Unsheltered Persons in Families	296	168	232	133	156	23	17%
Number of Sheltered Individuals	3,751	3,509	3,382	3,437	3,350	-87	-3%
Number of Unsheltered Individuals	1,232	1,568	1,532	1,215	1,080	-135	-11%
<b>Total Homeless Persons</b>	<b>7,689</b>	<b>7,247</b>	<b>7,144</b>	<b>6,561</b>	<b>6,360</b>	<b>-201</b>	<b>-3%</b>
Number of Sheltered Families	777	635	640	564	570	6	1%
Number of Unsheltered Families	89	46	59	39	46	7	18%
<b>Number of Total Families</b>	<b>866</b>	<b>681</b>	<b>699</b>	<b>603</b>	<b>616</b>	<b>13</b>	<b>2%</b>
Sheltered Chronically Homeless Individuals	782	746	608	617	717	100	16%
Unsheltered Chronically Homeless Individuals	495	690	651	547	486	-61	-11%
<b>Total Chronically Homeless Individuals</b>	<b>1,277</b>	<b>1,436</b>	<b>1,259</b>	<b>1,164</b>	<b>1,203</b>	<b>39</b>	<b>3%</b>
Sheltered Veterans	436	440	470	411	392	-19	-5%
Unsheltered Veterans	119	96	104	79	72	-7	-9%
<b>Total Veterans</b>	<b>555</b>	<b>536</b>	<b>574</b>	<b>490</b>	<b>464</b>	<b>-26</b>	<b>-5%</b>
Sheltered Unaccompanied Youth (up to 24)	185	179	175	179	186	7	4%
Unsheltered Unaccompanied Youth (up to 24)	94	93	92	111	41	-70	-63%
<b>Total Unaccompanied Youth (up to 24)</b>	<b>279</b>	<b>272</b>	<b>267</b>	<b>290</b>	<b>227</b>	<b>-63</b>	<b>-22%</b>

### System Performance Measures Summary

	2016	2017	2018	2019	2020	2019-20 Change	% Change
Rate People Return to Homelessness in 6 Months	6.4%	5.7%	5.9%	7.1%	7.9%	0.8%	N/A
Number of People who are Homeless for the First Time	12,326	13,060	12,854	12,650	9,320	-3,330	-26.3%
Rate People Exit from ES, SH, TH, and RRH to PH	44.9%	43.9%	44.5%	46.8%	41.7%	-5.1%	N/A
Rate People in PSH and OPH Retain or Exit to PH	95.7%	95.8%	97.2%	97.5%	98.0%	0.5%	N/A

### Housing Inventory Count Summary

	2016	2017	2018	2019	2020	2019-20 Change	% Change
Emergency Shelter (ES)	3,188	3,334	3,470	3,444	3,450	6	0%
Safe Haven (SH)	85	85	89	89	59	-30	-34%
Transitional Housing (TH)	2,865	2,197	1,970	1,770	1,712	-58	-3%
Permanent Supportive Housing (PSH)	8,146	8,458	7,194	7,368	7,924	556	8%
Rapid Re-Housing (RRH)	1,044	1,412	1,262	1,542	1,439	-103	-7%
Other Permanent Housing (OPH)	332	427	1,911	1,986	1,926	-60	-3%

### Award Summary

	2016	2017	2018	2019	2020	2019-20 Change	% Change
<b>Continuum of Care (CoC)</b>	\$48,235,071	\$50,221,552	\$53,385,248	\$52,440,084	\$53,840,535	\$1,400,451	3%
<b>Emergency Solutions Grants (ESG)</b>	\$3,988,674	\$6,616,093	\$4,082,519	\$4,266,548	\$4,468,328	\$201,780	5%
<b>Youth Homelessness Demonstration Program (YHDP)</b>	--	--	\$7,182,272	--	--	--	--