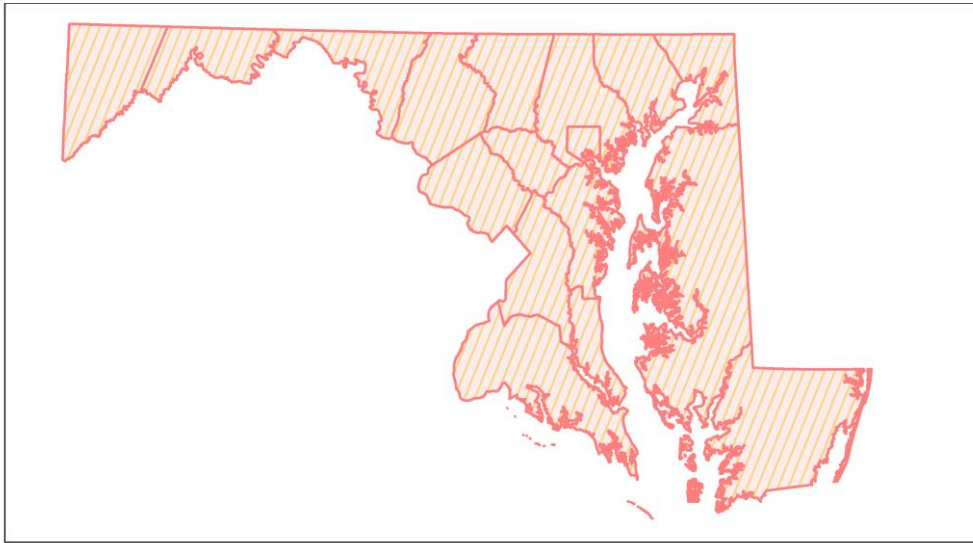
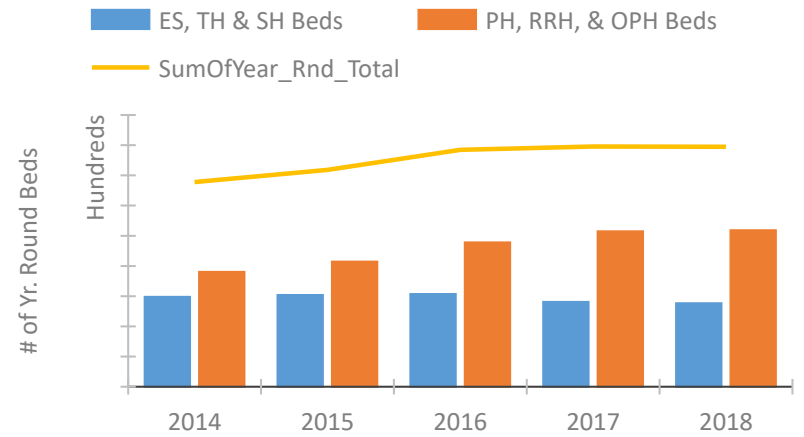


Maryland Continuum of Care Performance Profile

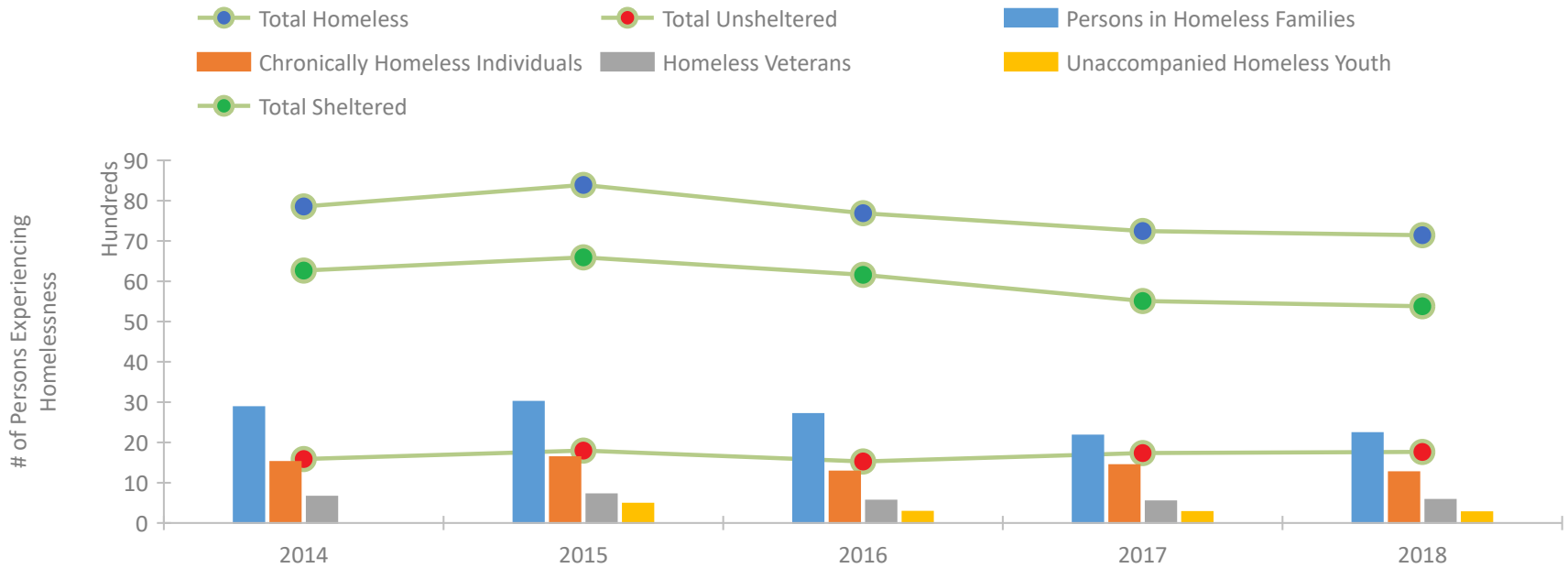


2018 CoC Boundaries 2017 CoC Boundaries

Housing Inventory Count by Program Type

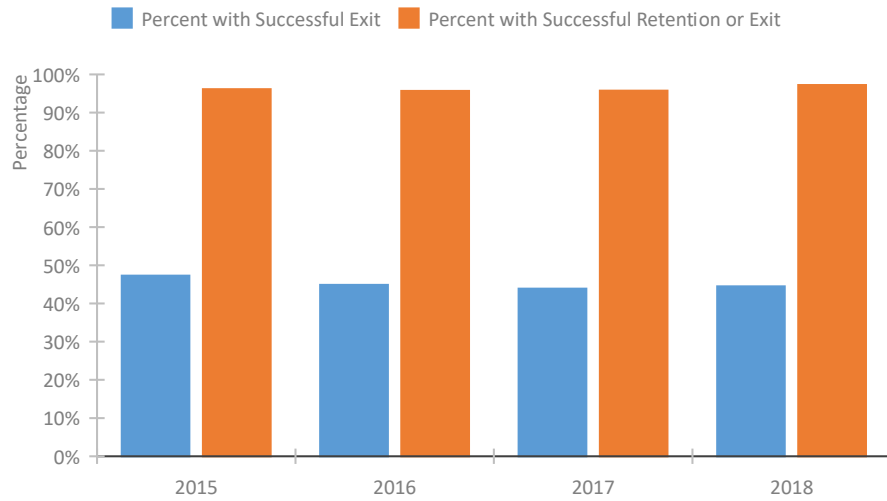


Homeless Population – Point-in-Time (PIT) Count

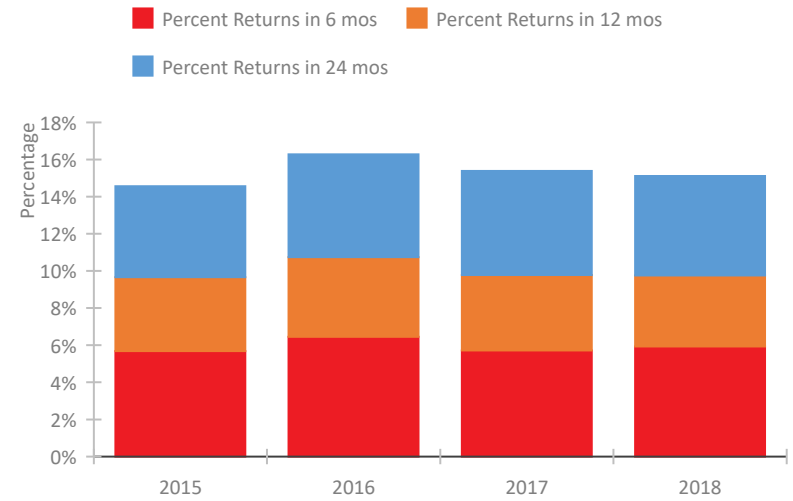


Maryland Continuum of Care Performance Profile

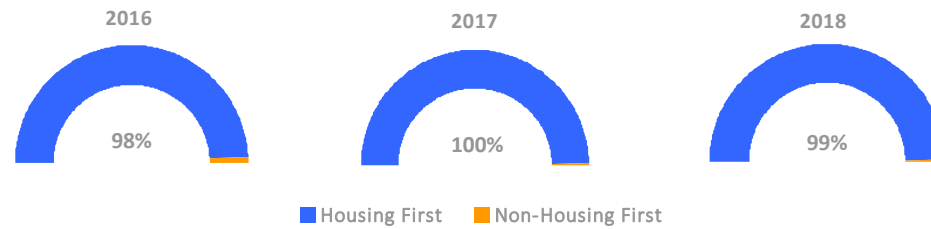
Exits to Permanent Housing by Program Type



Returns to Homelessness Over Time



Proportion of Housing First Projects by Year



Number of Projects by Year

	2016	2017	2018
Housing First Projects	179	261	174
Non-Housing First Projects	3	1	1

Data Summary: Maryland

Point-In-Time Count Summary

	2014	2015	2016	2017	2018	2017-18 Change	% Change
Number of Sheltered Persons in Families	2,395	2,607	2,410	2,002	1,998	-4	0%
Number of Unsheltered Persons in Families	481	400	296	168	232	64	38%
Number of Sheltered Individuals	3,850	3,973	3,746	3,502	3,376	-126	-4%
Number of Unsheltered Individuals	1,098	1,364	1,222	1,564	1,529	-35	-2%
Total Homeless Persons	7,824	8,344	7,674	7,236	7,135	-101	-1%
Number of Sheltered Families	803	847	777	635	640	5	1%
Number of Unsheltered Families	145	123	89	46	59	13	28%
Number of Total Families	948	970	866	681	699	18	3%
Sheltered Chronically Homeless Individuals	997	923	782	746	608	-138	-18%
Unsheltered Chronically Homeless Individuals	518	711	495	690	651	-39	-6%
Total Chronically Homeless Individuals	1,515	1,634	1,277	1,436	1,259	-177	-12%
Sheltered Veterans	555	586	436	440	470	30	7%
Unsheltered Veterans	99	128	119	96	104	8	8%
Total Veterans	654	714	555	536	574	38	7%
Sheltered Unaccompanied Youth (up to 24)	--	327	185	179	175	-4	-2%
Unsheltered Unaccompanied Youth (up to 24)	--	154	94	93	92	-1	-1%
Total Unaccompanied Youth (up to 24)	--	481	279	272	267	-5	-2%

System Performance Measures Summary

	2014	2015	2016	2017	2018	2017-18 Change	% Change
Rate People Return to Homelessness in 6 Months	N/A	5.7%	6.4%	5.7%	5.9%	0.2%	N/A
Number of People who are Homeless for the First Time	N/A	11,949	12,326	13,060	12,854	-206	-1.6%
Rate People Exit from ES, SH, TH, and RRH to PH	N/A	47.3%	44.9%	43.9%	44.5%	0.6%	N/A
Rate People in PSH and OPH Retain or Exit to PH	N/A	96.1%	95.7%	95.8%	97.2%	1.5%	N/A

Housing Inventory Count Summary

	2014	2015	2016	2017	2018	2017-18 Change	% Change
Emergency Shelter (ES)	2,818	3,014	3,188	3,334	3,470	136	4%
Safe Haven (SH)	105	109	85	85	89	4	5%
Transitional Housing (TH)	3,027	2,953	2,865	2,197	1,970	-227	-10%
Permanent Supportive Housing (PSH)	7,145	7,405	8,146	8,458	7,194	-1,264	-15%
Rapid Re-Housing (RRH)	227	567	1,044	1,412	1,262	-150	-11%
Other Permanent Housing (OPH)	215	284	332	427	1,911	1,484	348%

Award Summary

	2014	2015	2016	2017	2018	2017-18 Change	% Change
Continuum of Care (CoC)	\$48,362,263	\$47,032,167	\$48,235,071	\$50,221,552	\$53,385,248	\$3,163,696	6%
Emergency Solutions Grants (ESG)	\$3,638,957	\$3,975,651	\$3,988,674	\$6,616,093	\$4,082,519	(\$2,533,574)	-38%
Youth Homelessness Demonstration Program (YHDP)	N/A	N/A	--	--	\$7,182,272	--	--