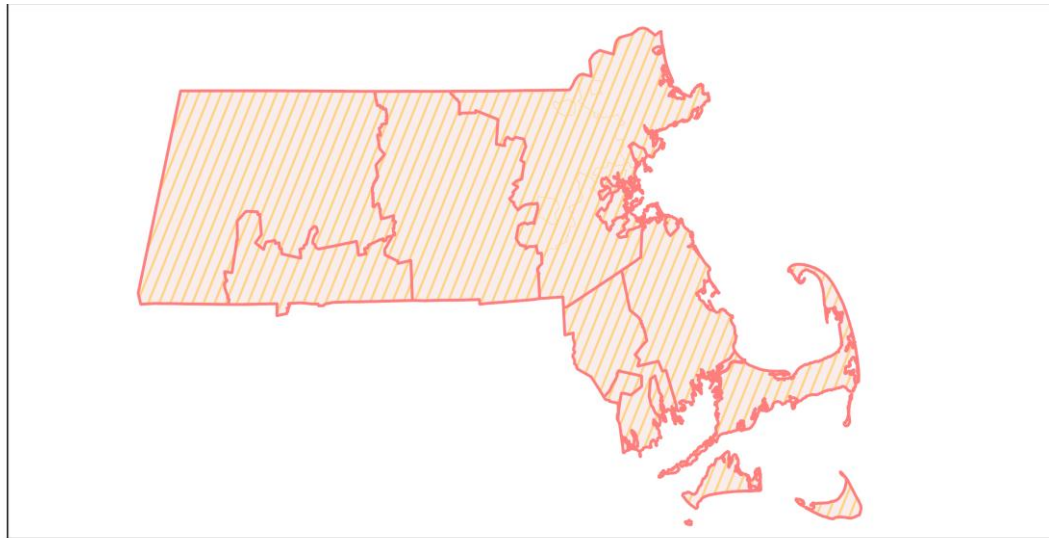
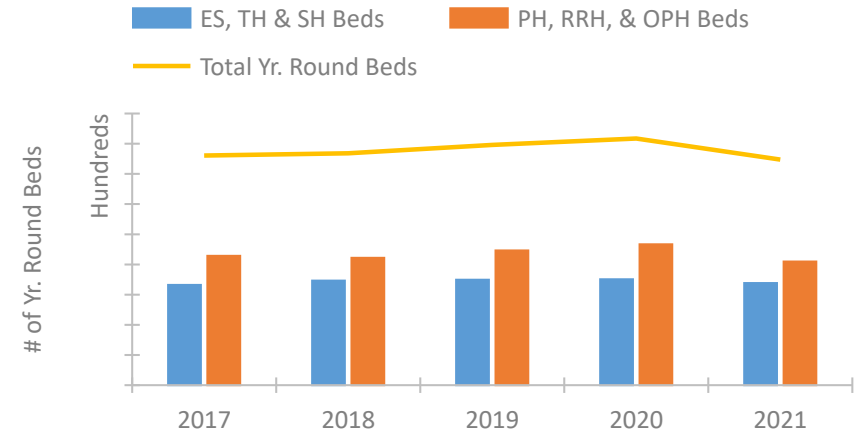


Massachusetts Continuum of Care Performance Profile

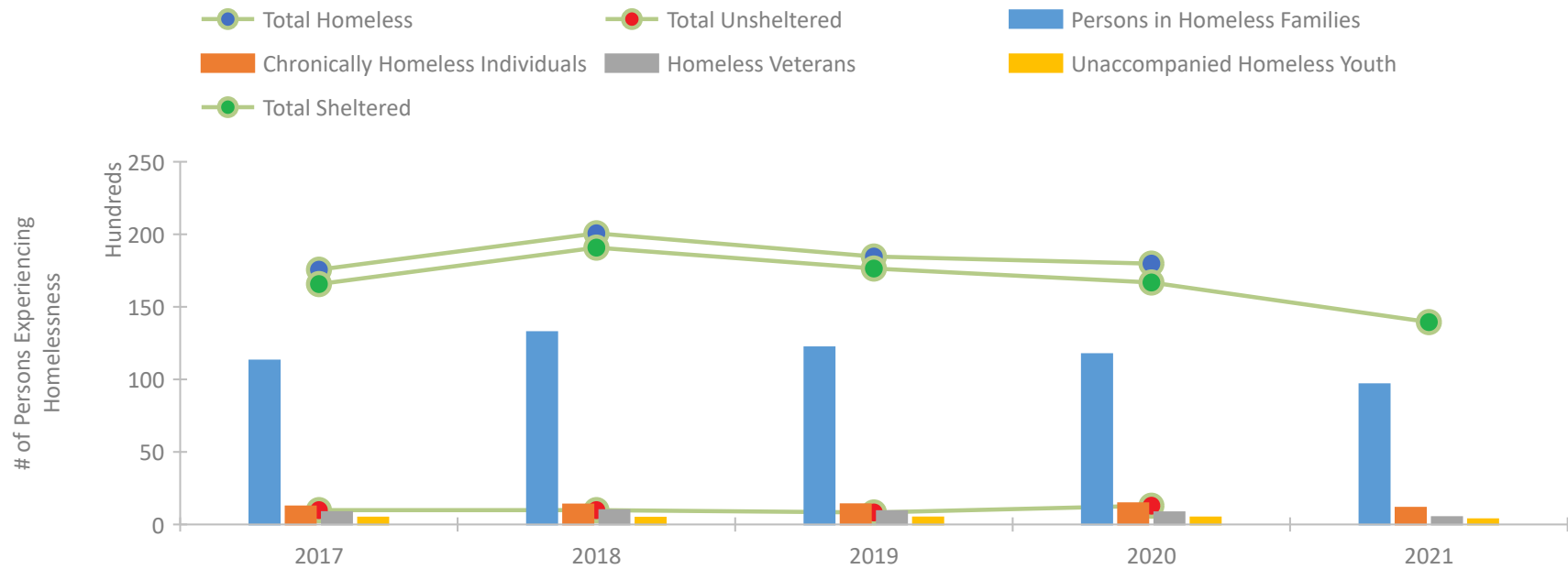


2021 CoC Boundaries 2020 CoC Boundaries

Housing Inventory Count by Program Type



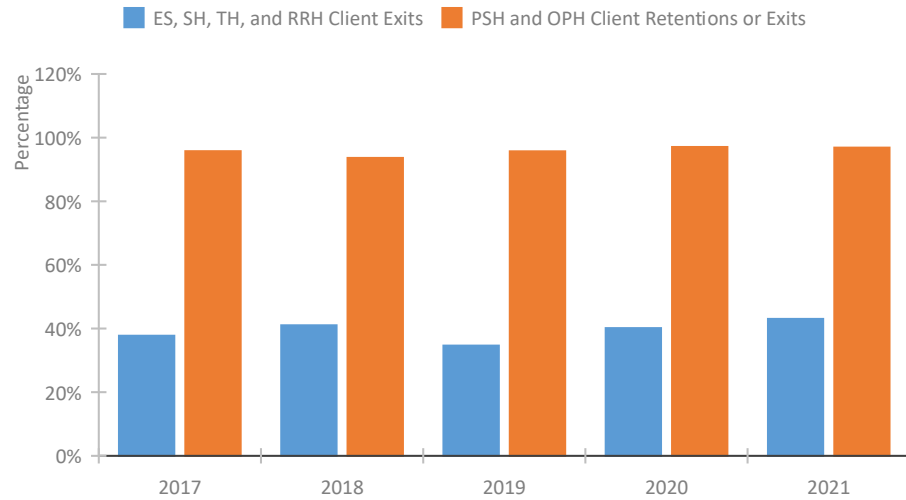
Homeless Population – Point-in-Time (PIT) Count*



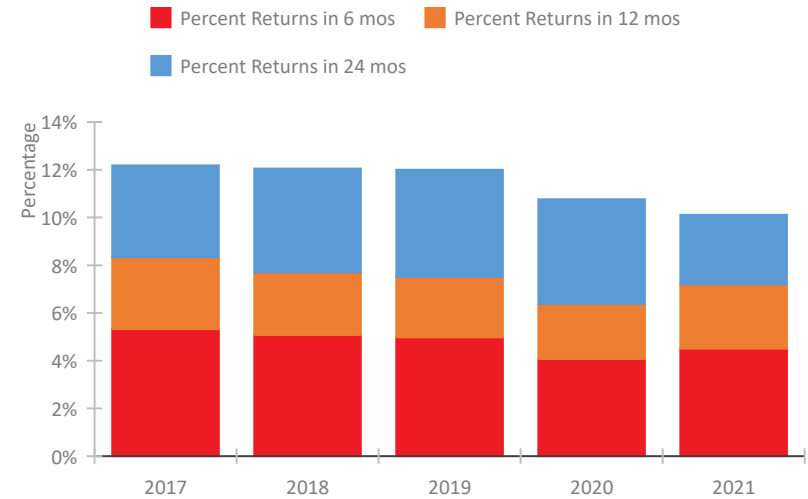
*In 2021, HUD gave communities the option to cancel or modify the unsheltered survey portion of their counts based on the potential risk of COVID-19 transmission associated with conducting an in-person survey. As a result, HUD has excluded the unsheltered population sub-totals and all unsheltered sub-population data for this reporting period. The user is cautioned that the unsheltered and total homeless counts reported here may be missing data.

Massachusetts Continuum of Care Performance Profile

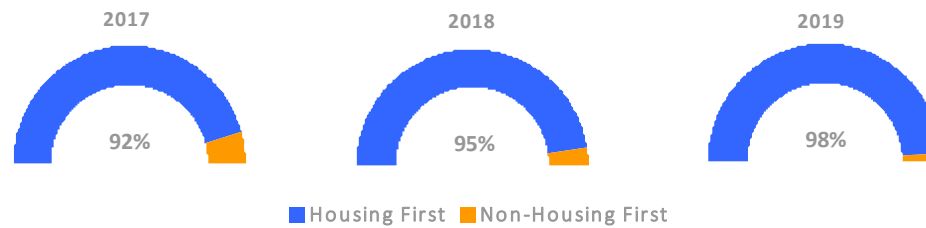
Exits to Permanent Housing by Program Type



Returns to Homelessness Over Time



Proportion of Housing First Projects by Year†



Number of Projects by Year

	2017	2018	2019
Housing First Projects	225	231	195
Non-Housing First Projects	20	12	5

†2021 Data unavailable at the time of report publication. In 2020 HUD awarded renewal projects noncompetitively, therefore no new data was collected and Housing First data remains the same from 2019 to 2020.

Data Summary: Massachusetts

Point-In-Time Count Summary*

	2017	2018	2019	2020	2021	2020-21 Change	% Change
Number of Sheltered Persons in Families	11,286	13,255	12,203	11,721	9,666	-2,055	-18%
Number of Unsheltered Persons in Families	12	2	9	21	0	-21	-100%
Number of Sheltered Individuals	5,288	5,828	5,439	4,960	4,278	-682	-14%
Number of Unsheltered Individuals	979	983	820	1,273	--	--	--
Total Homeless Persons	17,565	20,068	18,471	17,975	13,944	-4,031	-22%
Number of Sheltered Families	3,426	4,148	3,762	3,708	2,870	-838	-23%
Number of Unsheltered Families	4	1	4	6	--	--	--
Number of Total Families	3,430	4,149	3,766	3,714	2,870	-844	-23%
Sheltered Chronically Homeless Individuals	885	1,054	1,147	1,104	1,144	40	4%
Unsheltered Chronically Homeless Individuals	353	319	245	355	--	--	--
Total Chronically Homeless Individuals	1,238	1,373	1,392	1,459	1,144	-315	-22%
Sheltered Veterans	808	934	884	807	505	-302	-37%
Unsheltered Veterans	45	51	33	29	--	--	--
Total Veterans	853	985	917	836	505	-331	-40%
Sheltered Unaccompanied Youth (up to 24)	407	373	409	402	351	-51	-13%
Unsheltered Unaccompanied Youth (up to 24)	62	92	71	79	--	--	--
Total Unaccompanied Youth (up to 24)	469	465	480	481	351	-130	-27%

System Performance Measures Summary

	2017	2018	2019	2020	2021	2020-21 Change	% Change
Rate People Return to Homelessness in 6 Months	5.3%	5.1%	5.0%	4.1%	4.5%	0.4%	N/A
Number of People who are Homeless for the First Time	26,986	24,945	20,791	15,194	14,536	-658	-4.3%
Rate People Exit from ES, SH, TH, and RRH to PH	37.7%	41.0%	34.6%	40.1%	43.0%	2.9%	N/A
Rate People in PSH and OPH Retain or Exit to PH	95.7%	93.6%	95.7%	97.1%	96.8%	-0.2%	N/A

Housing Inventory Count Summary

	2017	2018	2019	2020	2021	2020-21 Change	% Change
Emergency Shelter (ES)	13,732	14,796	15,104	15,360	14,964	-396	-3%
Safe Haven (SH)	85	111	86	88	114	26	30%
Transitional Housing (TH)	2,797	2,403	2,282	2,080	1,831	-249	-12%
Permanent Supportive Housing (PSH)	11,397	11,998	12,582	12,635	10,480	-2,155	-17%
Rapid Re-Housing (RRH)	5,620	5,156	4,867	5,700	3,670	-2,030	-36%
Other Permanent Housing (OPH)	4,417	3,948	4,875	4,997	6,322	1,325	27%

Award Summary

	2017	2018	2019	2020	2021	2020-21 Change	% Change
Continuum of Care (CoC)	\$73,552,552	\$78,523,594	\$83,478,910	\$96,848,836	\$104,609,207	\$7,760,371	8%
Emergency Solutions Grants (ESG)	\$10,713,258	\$8,194,277	\$8,513,279	\$8,818,104	\$8,802,786	(\$15,318)	0%
Youth Homelessness Demonstration Program (YHDP)	\$4,924,520	\$4,384,881	\$5,899,876	--	\$6,338,895	--	--

*In 2021, HUD gave communities the option to cancel or modify the unsheltered survey portion of their counts based on the potential risk of COVID-19 transmission associated with conducting an in-person survey. As a result, HUD has excluded the unsheltered population sub-totals and all unsheltered sub-population data for this reporting period. The user is cautioned that the unsheltered and total homeless counts reported here may be missing data.