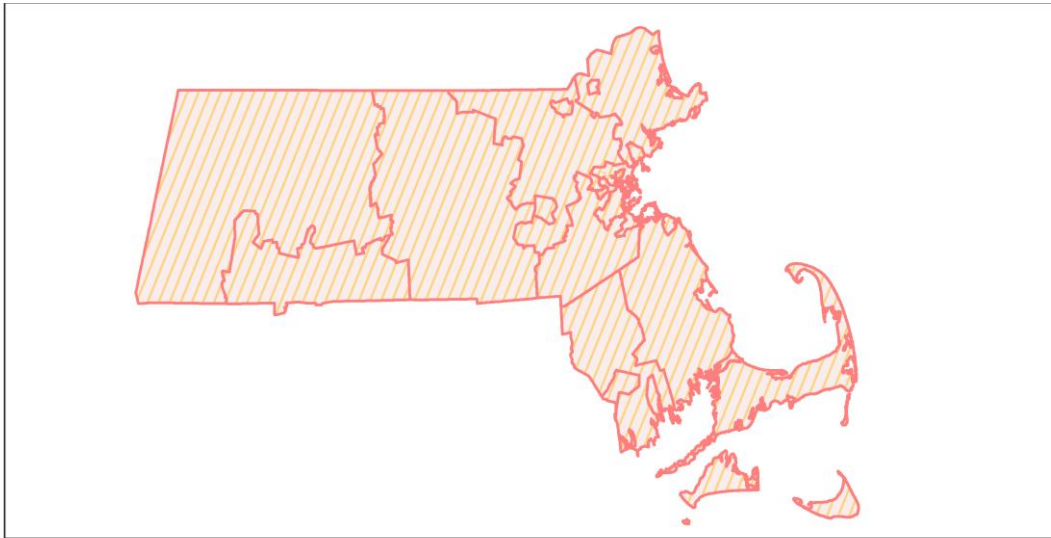
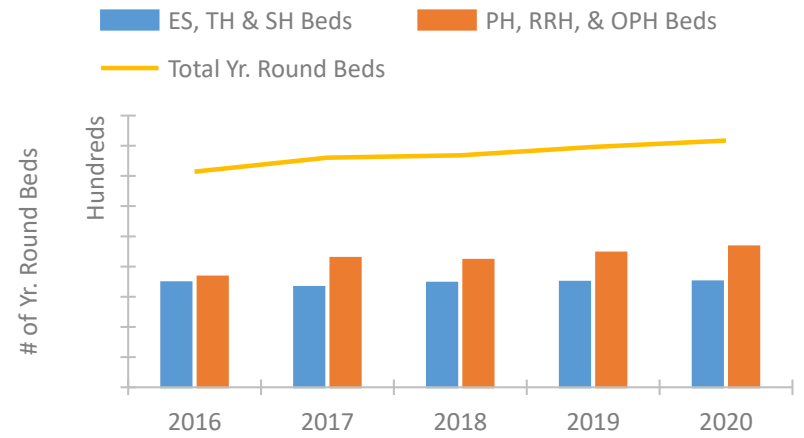


Massachusetts Continuum of Care Performance Profile

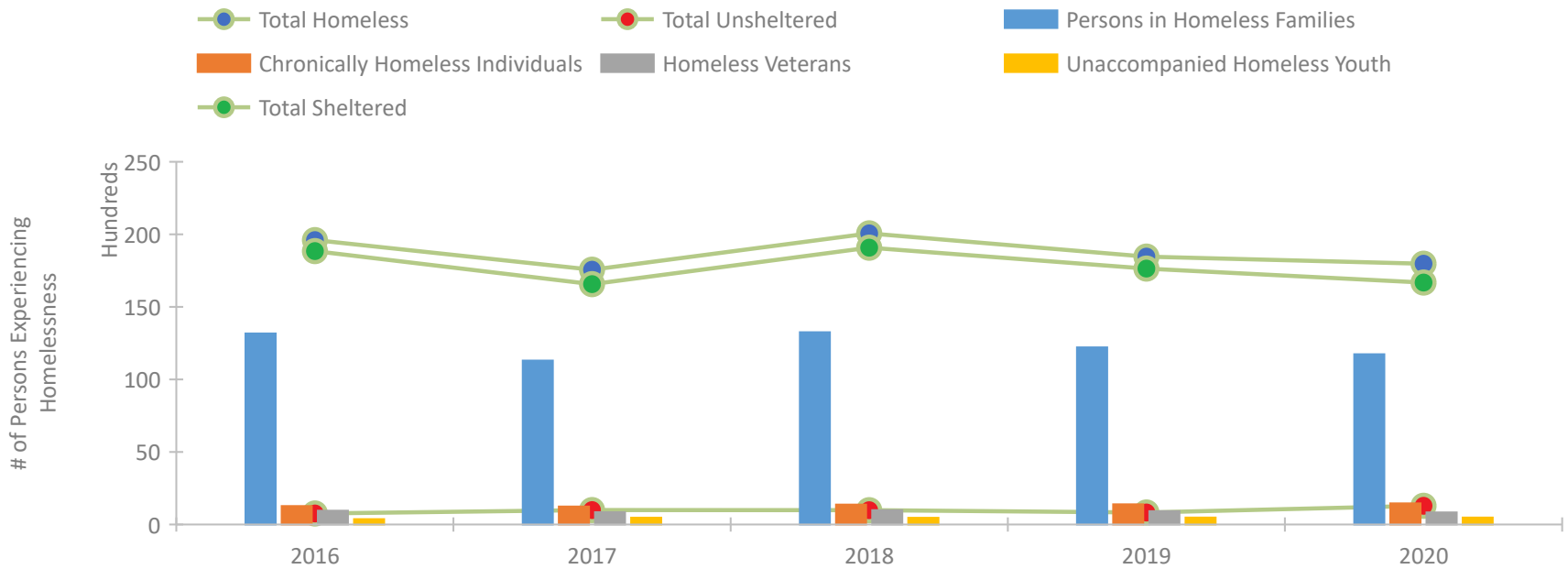


2020 CoC Boundaries 2019 CoC Boundaries

Housing Inventory Count by Program Type

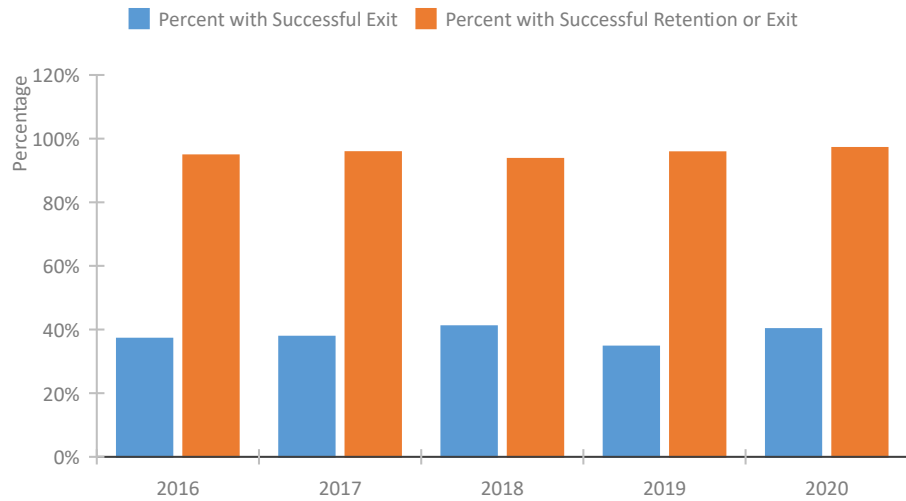


Homeless Population – Point-in-Time (PIT) Count

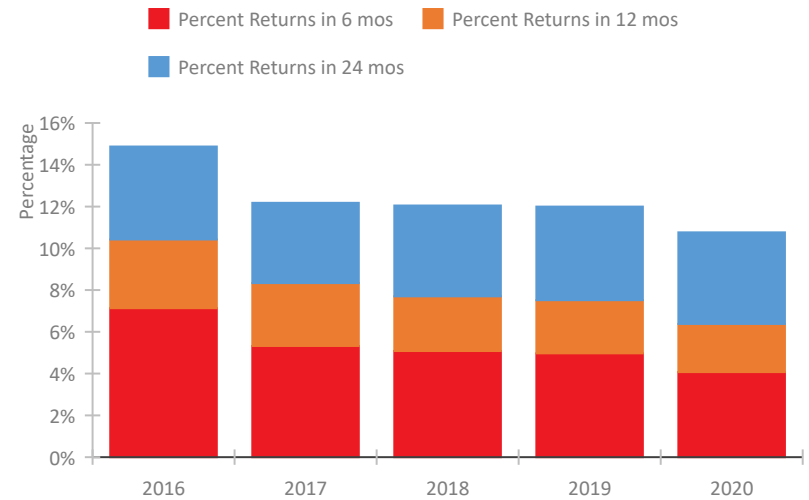


Massachusetts Continuum of Care Performance Profile

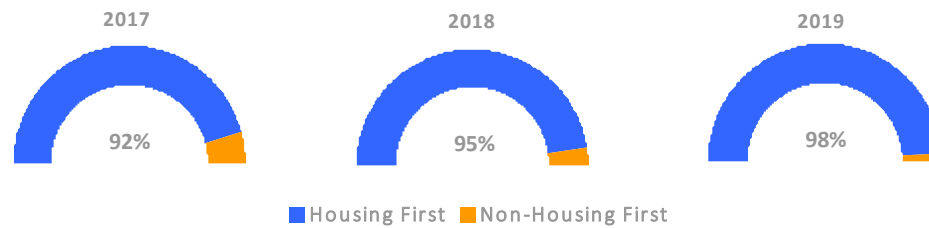
Exits to Permanent Housing by Program Type



Returns to Homelessness Over Time



Proportion of Housing First Projects by Year*



Number of Projects by Year			
	2017	2018	2019
Housing First Projects	225	231	195
Non-Housing First Projects	20	12	5

*In 2020 HUD awarded renewal projects noncompetitively, therefore no new data was collected and Housing First data remains the same from 2019 to 2020.

Data Summary: Massachusetts

Point-In-Time Count Summary

	2016	2017	2018	2019	2020	2019-20 Change	% Change
Number of Sheltered Persons in Families	13,158	11,286	13,255	12,203	11,721	-482	-4%
Number of Unsheltered Persons in Families	16	12	2	9	21	12	133%
Number of Sheltered Individuals	5,690	5,288	5,828	5,439	4,960	-479	-9%
Number of Unsheltered Individuals	744	979	983	820	1,273	453	55%
Total Homeless Persons	19,608	17,565	20,068	18,471	17,975	-496	-3%
Number of Sheltered Families	4,374	3,426	4,148	3,762	3,708	-54	-1%
Number of Unsheltered Families	7	4	1	4	6	2	50%
Number of Total Families	4,381	3,430	4,149	3,766	3,714	-52	-1%
Sheltered Chronically Homeless Individuals	1,023	885	1,054	1,147	1,104	-43	-4%
Unsheltered Chronically Homeless Individuals	249	353	319	245	355	110	45%
Total Chronically Homeless Individuals	1,272	1,238	1,373	1,392	1,459	67	5%
Sheltered Veterans	915	808	934	884	807	-77	-9%
Unsheltered Veterans	34	45	51	33	29	-4	-12%
Total Veterans	949	853	985	917	836	-81	-9%
Sheltered Unaccompanied Youth (up to 24)	320	407	373	409	402	-7	-2%
Unsheltered Unaccompanied Youth (up to 24)	54	62	92	71	79	8	11%
Total Unaccompanied Youth (up to 24)	374	469	465	480	481	1	0%

System Performance Measures Summary

	2016	2017	2018	2019	2020	2019-20 Change	% Change
Rate People Return to Homelessness in 6 Months	7.1%	5.3%	5.1%	5.0%	4.1%	-0.9%	N/A
Number of People who are Homeless for the First Time	31,514	26,986	24,945	20,791	15,194	-5,597	-26.9%
Rate People Exit from ES, SH, TH, and RRH to PH	37.1%	37.7%	41.0%	34.6%	40.1%	5.5%	N/A
Rate People in PSH and OPH Retain or Exit to PH	94.7%	95.7%	93.6%	95.7%	97.1%	1.4%	N/A

Housing Inventory Count Summary

	2016	2017	2018	2019	2020	2019-20 Change	% Change
Emergency Shelter (ES)	13,903	13,732	14,796	15,104	15,360	256	2%
Safe Haven (SH)	46	85	111	86	88	2	2%
Transitional Housing (TH)	3,433	2,797	2,403	2,282	2,080	-202	-9%
Permanent Supportive Housing (PSH)	11,385	11,397	11,998	12,582	12,635	53	0%
Rapid Re-Housing (RRH)	3,185	5,620	5,156	4,867	5,700	833	17%
Other Permanent Housing (OPH)	3,643	4,417	3,948	4,875	4,997	122	3%

Award Summary

	2016	2017	2018	2019	2020	2019-20 Change	% Change
Continuum of Care (CoC)	\$69,463,083	\$73,552,552	\$78,523,594	\$83,478,910	\$96,848,836	\$13,369,926	16%
Emergency Solutions Grants (ESG)	\$8,213,197	\$10,713,258	\$8,194,277	\$8,513,279	\$8,818,104	\$304,825	4%
Youth Homelessness Demonstration Program (YHDP)	--	\$4,924,520	\$4,384,881	\$5,899,876	--	--	--