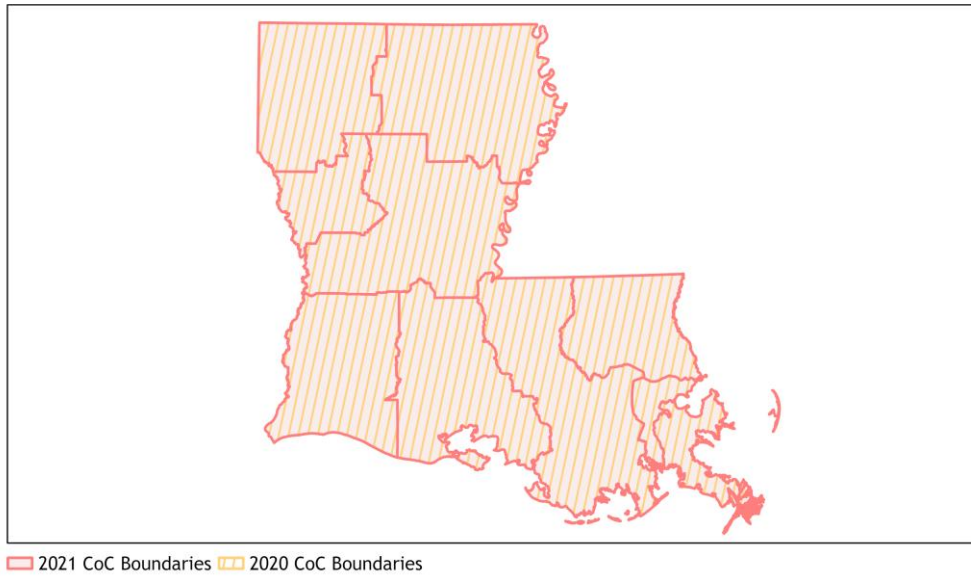
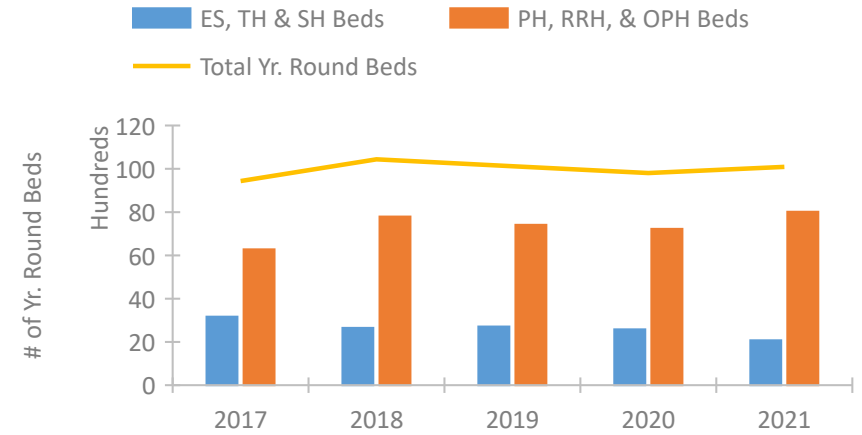


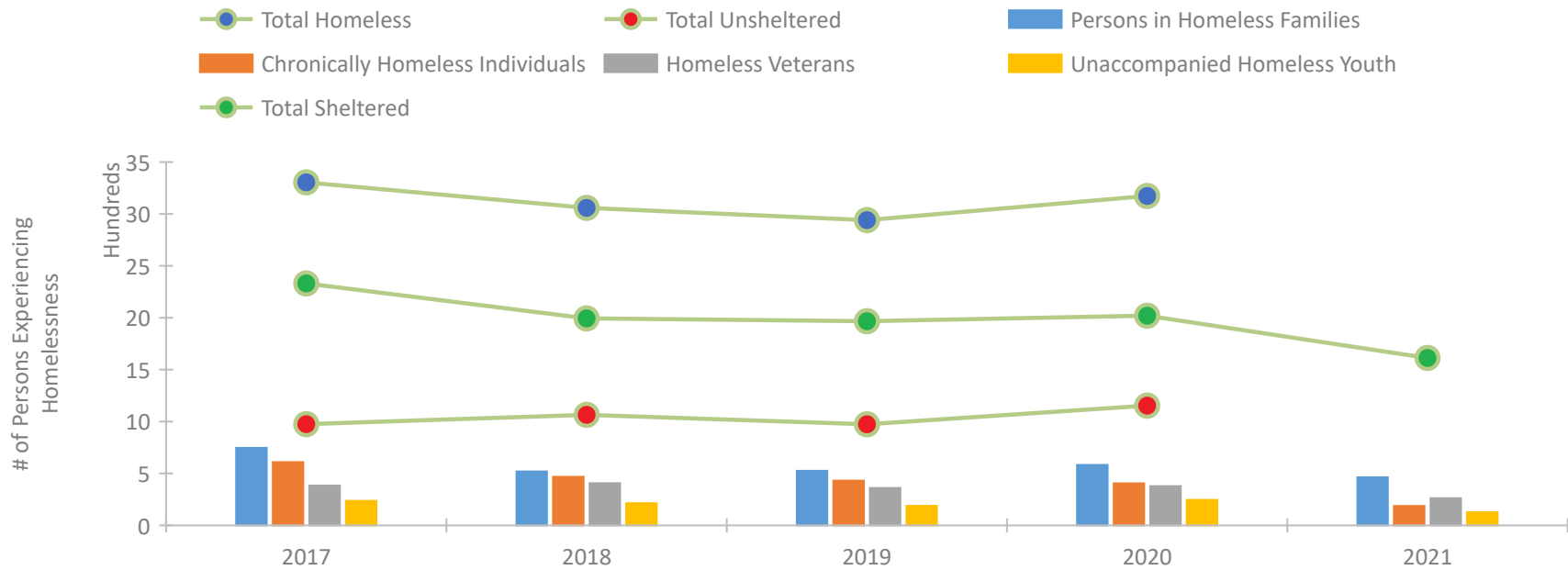
## Louisiana Continuum of Care Performance Profile



### Housing Inventory Count by Program Type



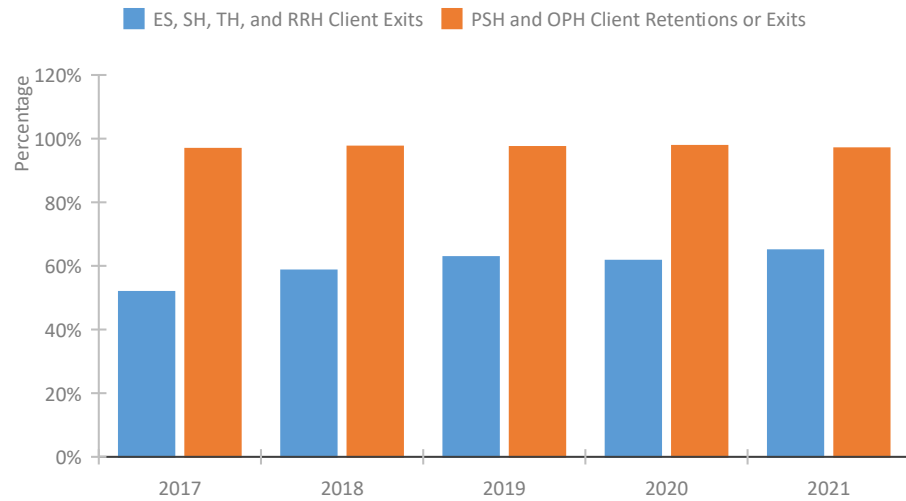
### Homeless Population – Point-in-Time (PIT) Count\*



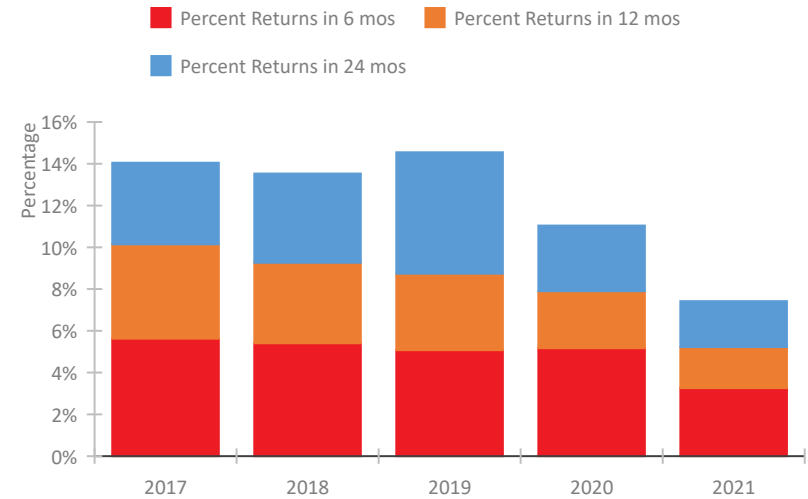
\*In 2021, HUD gave communities the option to cancel or modify the unsheltered survey portion of their counts based on the potential risk of COVID-19 transmission associated with conducting an in-person survey. As a result, HUD has excluded the unsheltered population sub-totals and all unsheltered sub-population data for this reporting period. The user is cautioned that the unsheltered and total homeless counts reported here may be missing data.

## Louisiana Continuum of Care Performance Profile

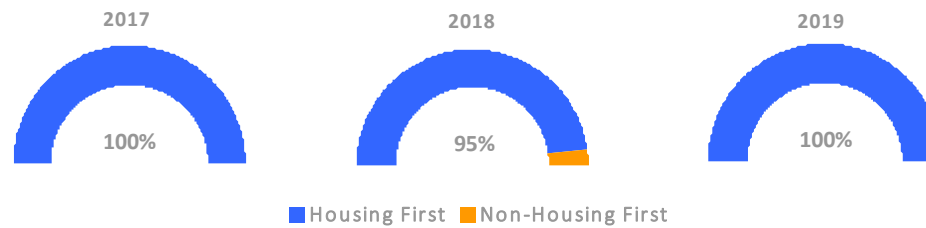
### Exits to Permanent Housing by Program Type



### Returns to Homelessness Over Time



### Proportion of Housing First Projects by Year†



### Number of Projects by Year

	2017	2018	2019
Housing First Projects	297	126	131
Non-Housing First Projects	0	6	0

†2021 Data unavailable at the time of report publication. In 2020 HUD awarded renewal projects noncompetitively, therefore no new data was collected and Housing First data remains the same from 2019 to 2020.

## Data Summary: Louisiana

### Point-In-Time Count Summary\*

	2017	2018	2019	2020	2021	2020-21 Change	% Change
Number of Sheltered Persons in Families	683	492	506	575	463	-112	-19%
Number of Unsheltered Persons in Families	63	27	19	7	0	-7	-100%
Number of Sheltered Individuals	1,647	1,502	1,461	1,445	1,150	-295	-20%
Number of Unsheltered Individuals	912	1,038	955	1,146	--	--	--
<b>Total Homeless Persons</b>	<b>3,305</b>	<b>3,059</b>	<b>2,941</b>	<b>3,173</b>	<b>1,613</b>	<b>-1,560</b>	<b>-49%</b>
Number of Sheltered Families	211	156	166	181	141	-40	-22%
Number of Unsheltered Families	20	8	4	1	--	--	--
<b>Number of Total Families</b>	<b>231</b>	<b>164</b>	<b>170</b>	<b>182</b>	<b>141</b>	<b>-41</b>	<b>-23%</b>
Sheltered Chronically Homeless Individuals	174	147	174	172	186	14	8%
Unsheltered Chronically Homeless Individuals	435	320	257	233	--	--	--
<b>Total Chronically Homeless Individuals</b>	<b>609</b>	<b>467</b>	<b>431</b>	<b>405</b>	<b>186</b>	<b>-219</b>	<b>-54%</b>
Sheltered Veterans	329	362	317	336	262	-74	-22%
Unsheltered Veterans	54	44	43	42	--	--	--
<b>Total Veterans</b>	<b>383</b>	<b>406</b>	<b>360</b>	<b>378</b>	<b>262</b>	<b>-116</b>	<b>-31%</b>
Sheltered Unaccompanied Youth (up to 24)	186	172	147	164	127	-37	-23%
Unsheltered Unaccompanied Youth (up to 24)	50	42	41	82	--	--	--
<b>Total Unaccompanied Youth (up to 24)</b>	<b>236</b>	<b>214</b>	<b>188</b>	<b>246</b>	<b>127</b>	<b>-119</b>	<b>-48%</b>

### System Performance Measures Summary

	2017	2018	2019	2020	2021	2020-21 Change	% Change
Rate People Return to Homelessness in 6 Months	5.6%	5.4%	5.1%	5.2%	3.3%	-1.9%	N/A
Number of People who are Homeless for the First Time	9,585	8,822	8,392	7,261	6,164	-1,097	-15.1%
Rate People Exit from ES, SH, TH, and RRH to PH	51.8%	58.5%	62.7%	61.6%	64.9%	3.3%	N/A
Rate People in PSH and OPH Retain or Exit to PH	96.8%	97.5%	97.3%	97.7%	96.9%	-0.8%	N/A

### Housing Inventory Count Summary

	2017	2018	2019	2020	2021	2020-21 Change	% Change
Emergency Shelter (ES)	1,734	1,508	1,791	1,748	1,450	-298	-17%
Safe Haven (SH)	45	64	55	102	51	-51	-50%
Transitional Housing (TH)	1,385	1,075	862	730	575	-155	-21%
Permanent Supportive Housing (PSH)	5,107	5,606	5,668	5,427	5,789	362	7%
Rapid Re-Housing (RRH)	1,154	2,176	1,742	1,799	2,162	363	20%
Other Permanent Housing (OPH)	13	13	--	--	62	--	--

### Award Summary

	2017	2018	2019	2020	2021	2020-21 Change	% Change
<b>Continuum of Care (CoC)</b>	\$47,049,826	\$51,377,386	\$54,940,133	\$57,275,660	\$62,206,026	\$4,930,366	9%
<b>Emergency Solutions Grants (ESG)</b>	\$4,809,085	\$3,935,916	\$4,081,974	\$4,263,857	\$4,311,977	\$48,120	1%

\*In 2021, HUD gave communities the option to cancel or modify the unsheltered survey portion of their counts based on the potential risk of COVID-19 transmission associated with conducting an in-person survey. As a result, HUD has excluded the unsheltered population sub-totals and all unsheltered sub-population data for this reporting period. The user is cautioned that the unsheltered and total homeless counts reported here may be missing data.