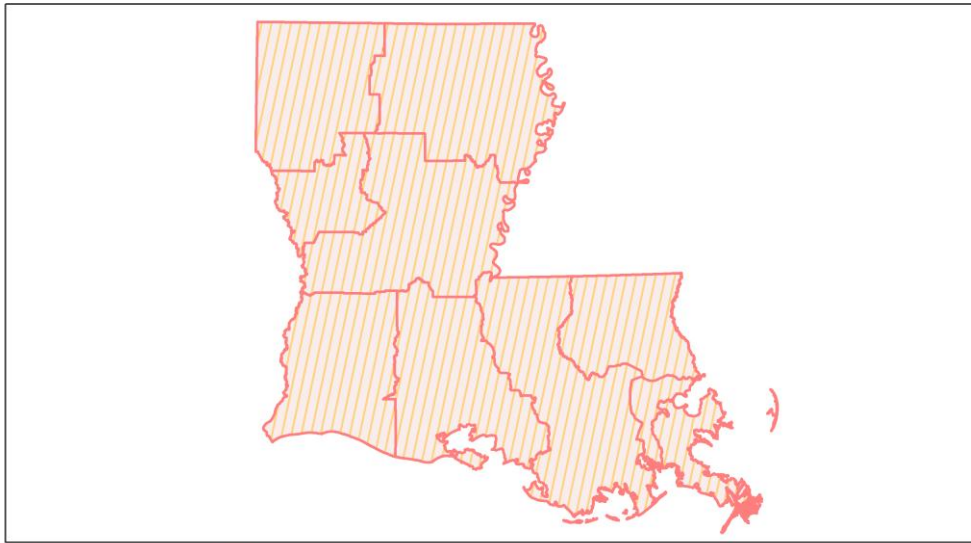
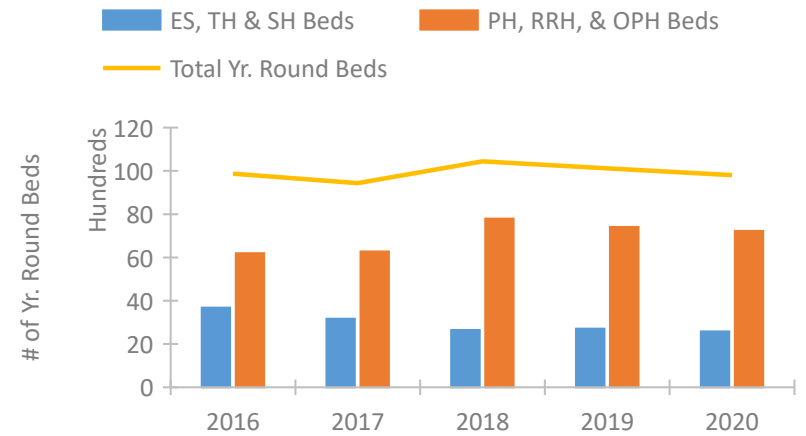


Louisiana Continuum of Care Performance Profile

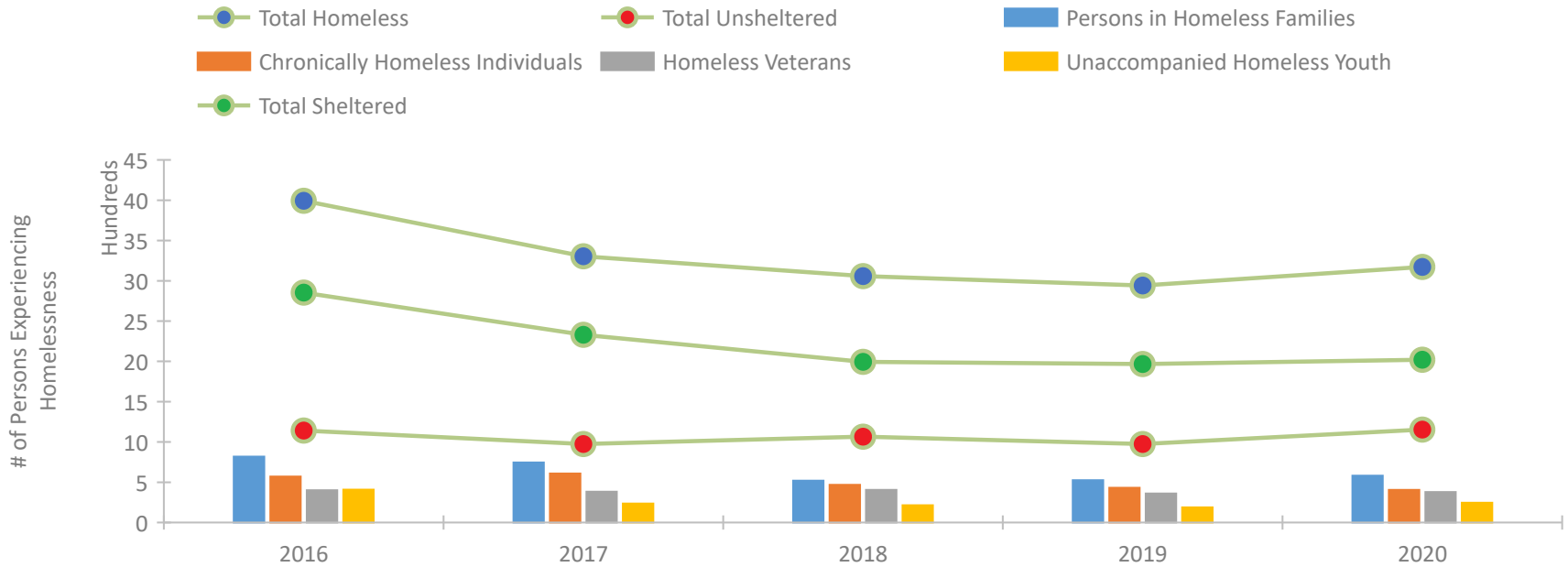


2020 CoC Boundaries 2019 CoC Boundaries

Housing Inventory Count by Program Type

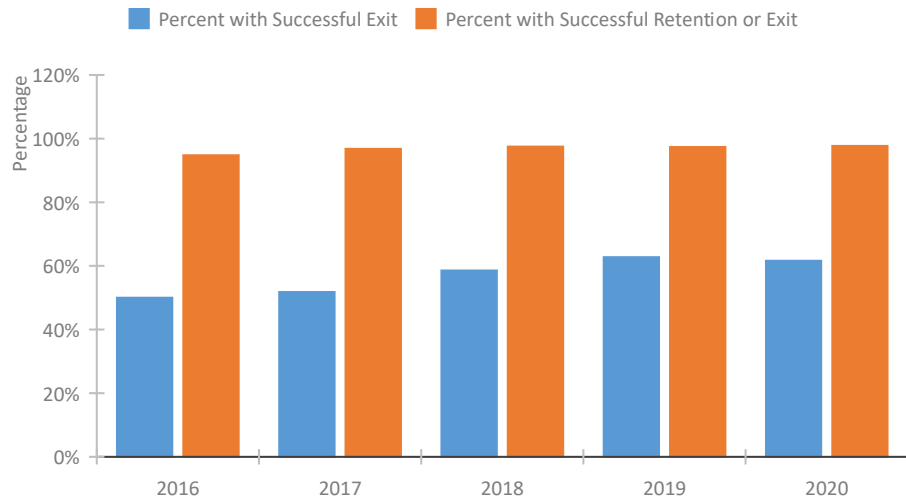


Homeless Population – Point-in-Time (PIT) Count

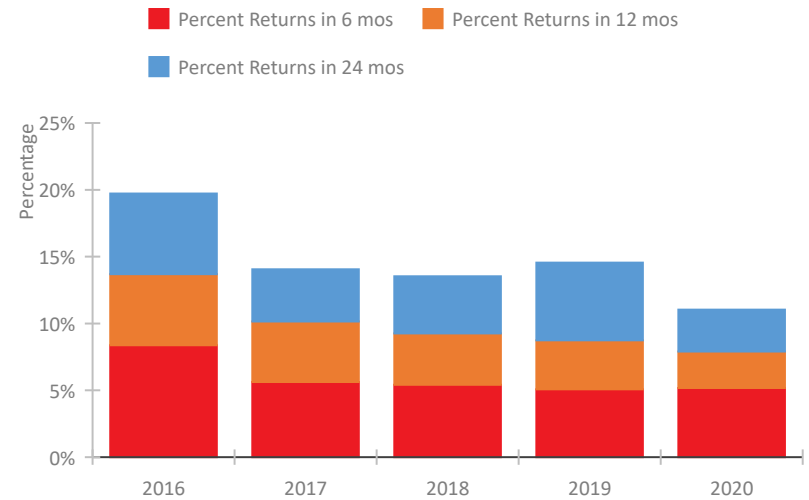


Louisiana Continuum of Care Performance Profile

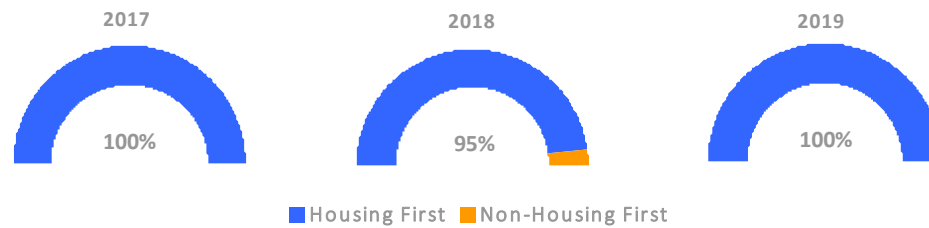
Exits to Permanent Housing by Program Type



Returns to Homelessness Over Time



Proportion of Housing First Projects by Year*



Number of Projects by Year			
	2017	2018	2019
Housing First Projects	297	126	131
Non-Housing First Projects	0	6	0

*In 2020 HUD awarded renewal projects noncompetitively, therefore no new data was collected and Housing First data remains the same from 2019 to 2020.

Data Summary: Louisiana

Point-In-Time Count Summary

	2016	2017	2018	2019	2020	2019-20 Change	% Change
Number of Sheltered Persons in Families	784	683	492	506	575	69	14%
Number of Unsheltered Persons in Families	34	63	27	19	7	-12	-63%
Number of Sheltered Individuals	2,069	1,647	1,502	1,461	1,445	-16	-1%
Number of Unsheltered Individuals	1,107	912	1,038	955	1,146	191	20%
Total Homeless Persons	3,994	3,305	3,059	2,941	3,173	232	8%
Number of Sheltered Families	231	211	156	166	181	15	9%
Number of Unsheltered Families	12	20	8	4	1	-3	-75%
Number of Total Families	243	231	164	170	182	12	7%
Sheltered Chronically Homeless Individuals	167	174	147	174	172	-2	-1%
Unsheltered Chronically Homeless Individuals	403	435	320	257	233	-24	-9%
Total Chronically Homeless Individuals	570	609	467	431	405	-26	-6%
Sheltered Veterans	363	329	362	317	336	19	6%
Unsheltered Veterans	37	54	44	43	42	-1	-2%
Total Veterans	400	383	406	360	378	18	5%
Sheltered Unaccompanied Youth (up to 24)	276	186	172	147	164	17	12%
Unsheltered Unaccompanied Youth (up to 24)	132	50	42	41	82	41	100%
Total Unaccompanied Youth (up to 24)	408	236	214	188	246	58	31%

System Performance Measures Summary

	2016	2017	2018	2019	2020	2019-20 Change	% Change
Rate People Return to Homelessness in 6 Months	8.4%	5.6%	5.4%	5.1%	5.2%	0.1%	N/A
Number of People who are Homeless for the First Time	9,436	9,585	8,822	8,392	7,261	-1,131	-13.5%
Rate People Exit from ES, SH, TH, and RRH to PH	50.0%	51.8%	58.5%	62.7%	61.6%	-1.1%	N/A
Rate People in PSH and OPH Retain or Exit to PH	94.8%	96.8%	97.5%	97.3%	97.7%	0.4%	N/A

Housing Inventory Count Summary

	2016	2017	2018	2019	2020	2019-20 Change	% Change
Emergency Shelter (ES)	1,757	1,734	1,508	1,791	1,748	-43	-2%
Safe Haven (SH)	50	45	64	55	102	47	85%
Transitional Housing (TH)	1,868	1,385	1,075	862	730	-132	-15%
Permanent Supportive Housing (PSH)	4,990	5,107	5,606	5,668	5,427	-241	-4%
Rapid Re-Housing (RRH)	1,032	1,154	2,176	1,742	1,799	57	3%

Award Summary

	2016	2017	2018	2019	2020	2019-20 Change	% Change
Continuum of Care (CoC)	\$45,603,512	\$47,049,826	\$51,377,386	\$54,940,133	\$57,275,660	\$2,335,527	4%
Emergency Solutions Grants (ESG)	\$3,955,055	\$4,809,085	\$3,935,916	\$4,081,974	\$4,263,857	\$181,883	4%