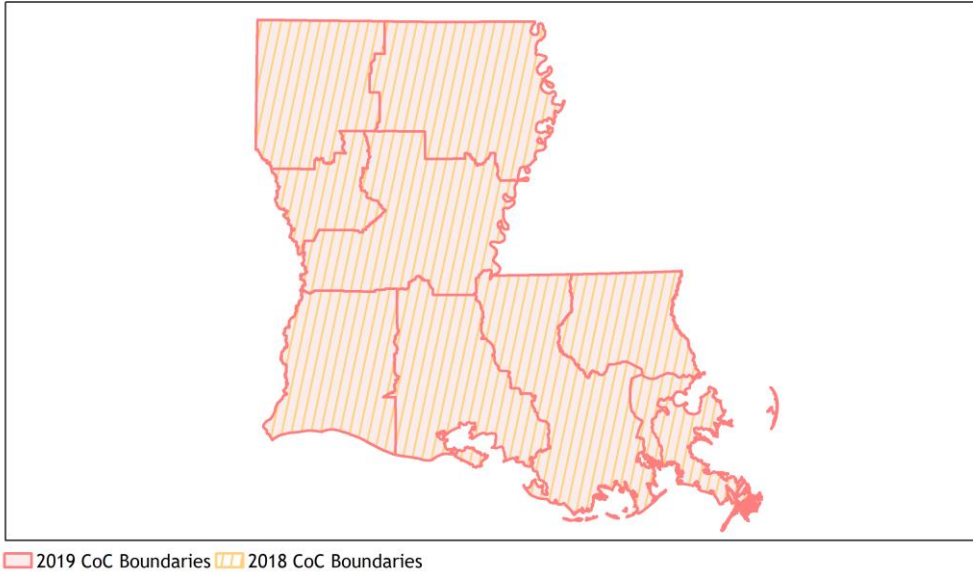
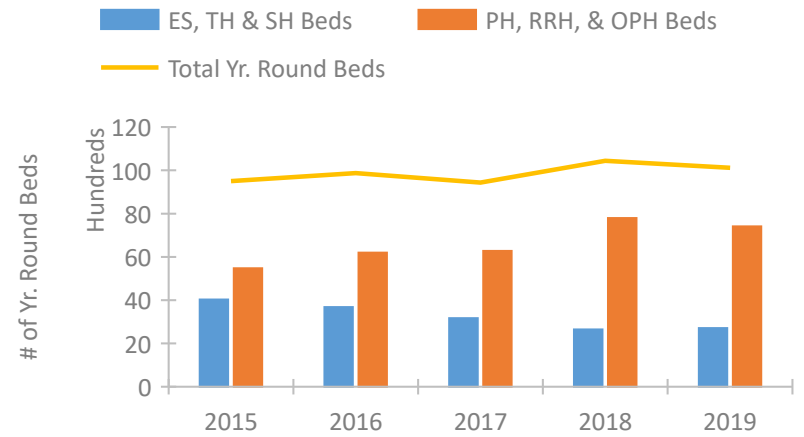


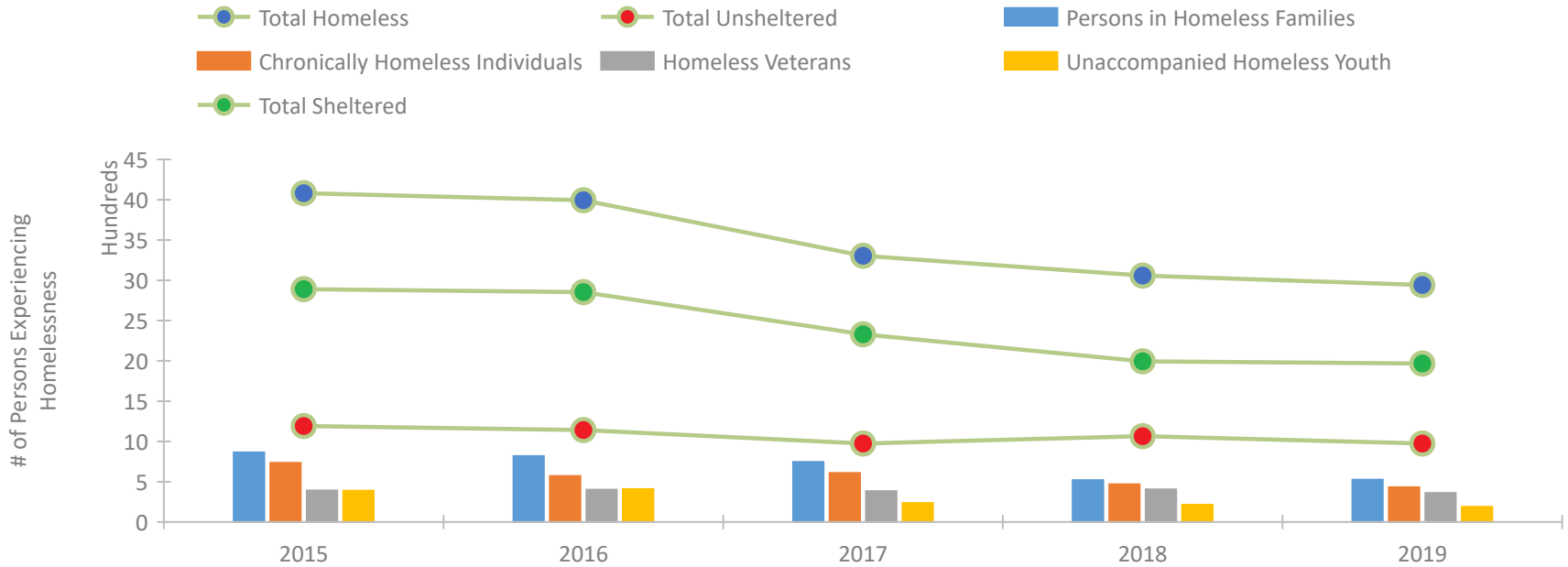
Louisiana Continuum of Care Performance Profile



Housing Inventory Count by Program Type

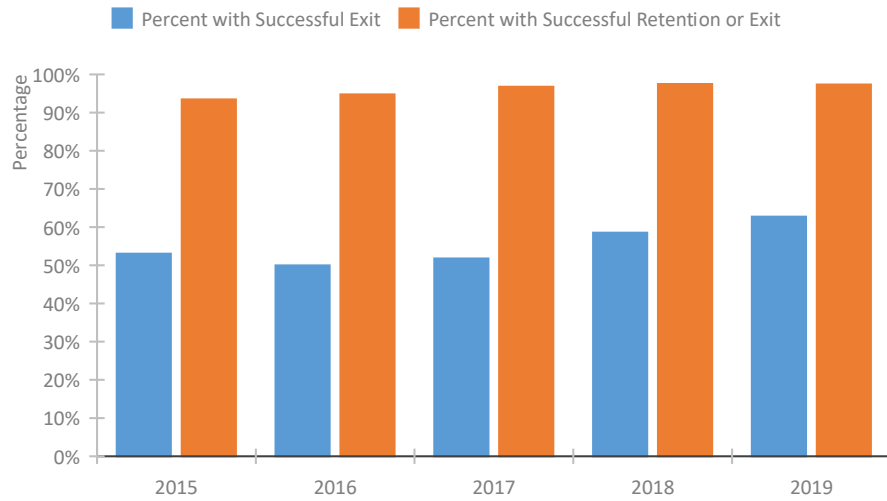


Homeless Population – Point-in-Time (PIT) Count

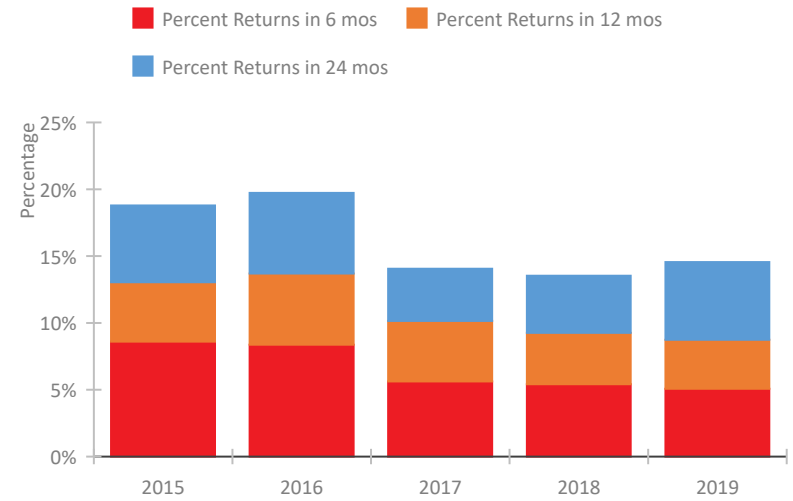


Louisiana Continuum of Care Performance Profile

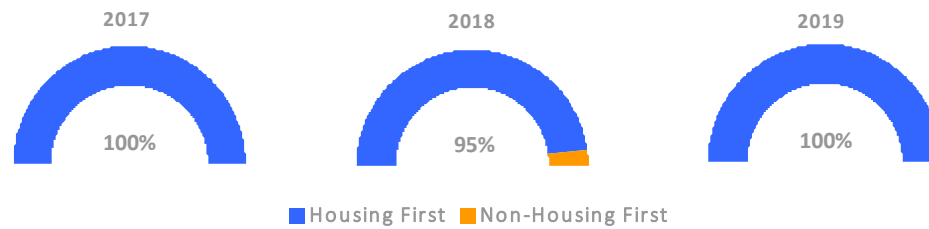
Exits to Permanent Housing by Program Type



Returns to Homelessness Over Time



Proportion of Housing First Projects by Year



Number of Projects by Year

	2017	2018	2019
Housing First Projects	297	126	131
Non-Housing First Projects	0	6	0

Data Summary: Louisiana

Point-In-Time Count Summary

	2015	2016	2017	2018	2019	2018-19 Change	% Change
Number of Sheltered Persons in Families	837	784	683	492	506	14	3%
Number of Unsheltered Persons in Families	27	34	63	27	19	-8	-30%
Number of Sheltered Individuals	2,053	2,069	1,647	1,502	1,461	-41	-3%
Number of Unsheltered Individuals	1,164	1,107	912	1,038	955	-83	-8%
Total Homeless Persons	4,081	3,994	3,305	3,059	2,941	-118	-4%
Number of Sheltered Families	276	231	211	156	166	10	6%
Number of Unsheltered Families	9	12	20	8	4	-4	-50%
Number of Total Families	285	243	231	164	170	6	4%
Sheltered Chronically Homeless Individuals	255	167	174	147	174	27	18%
Unsheltered Chronically Homeless Individuals	480	403	435	320	257	-63	-20%
Total Chronically Homeless Individuals	735	570	609	467	431	-36	-8%
Sheltered Veterans	350	363	329	362	317	-45	-12%
Unsheltered Veterans	42	37	54	44	43	-1	-2%
Total Veterans	392	400	383	406	360	-46	-11%
Sheltered Unaccompanied Youth (up to 24)	233	276	186	172	147	-25	-15%
Unsheltered Unaccompanied Youth (up to 24)	156	132	50	42	41	-1	-2%
Total Unaccompanied Youth (up to 24)	389	408	236	214	188	-26	-12%

System Performance Measures Summary

	2015	2016	2017	2018	2019	2018-19 Change	% Change
Rate People Return to Homelessness in 6 Months	8.6%	8.4%	5.6%	5.4%	5.1%	-0.3%	N/A
Number of People who are Homeless for the First Time	8,579	9,436	9,585	8,822	8,392	-430	-4.9%
Rate People Exit from ES, SH, TH, and RRH to PH	53.1%	50.0%	51.8%	58.5%	62.7%	4.2%	N/A
Rate People in PSH and OPH Retain or Exit to PH	93.4%	94.8%	96.8%	97.5%	97.3%	-0.1%	N/A

Housing Inventory Count Summary

	2015	2016	2017	2018	2019	2018-19 Change	% Change
Emergency Shelter (ES)	1,931	1,757	1,734	1,508	1,791	283	19%
Safe Haven (SH)	42	50	45	64	55	-9	-14%
Transitional Housing (TH)	2,055	1,868	1,385	1,075	862	-213	-20%
Permanent Supportive Housing (PSH)	4,634	4,990	5,107	5,606	5,668	62	1%
Rapid Re-Housing (RRH)	616	1,032	1,154	2,176	1,742	-434	-20%

Award Summary

	2015	2016	2017	2018	2019	2018-19 Change	% Change
Continuum of Care (CoC)	\$43,581,916	\$45,603,512	\$47,049,826	\$51,377,386	\$54,940,133	\$3,562,747	7%
Emergency Solutions Grants (ESG)	\$4,031,341	\$3,955,055	\$4,809,085	\$3,935,916	\$4,081,974	\$146,058	4%