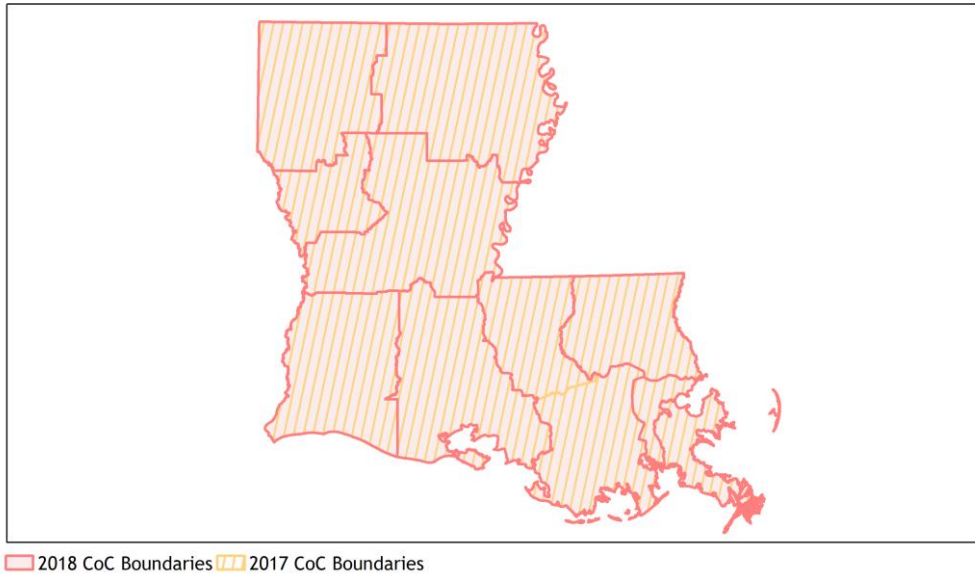
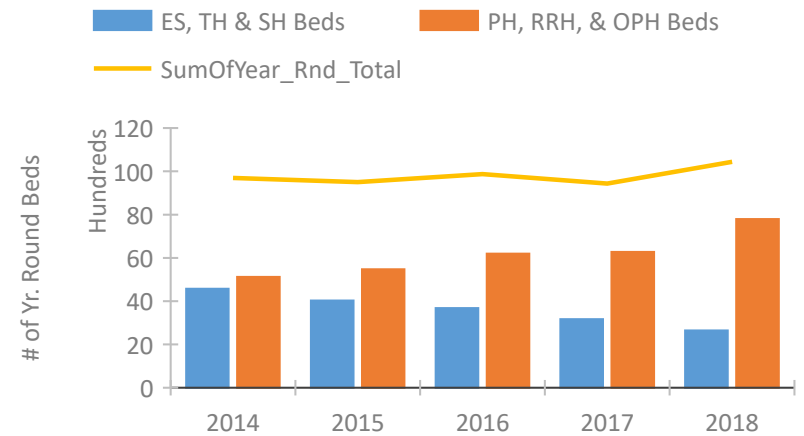


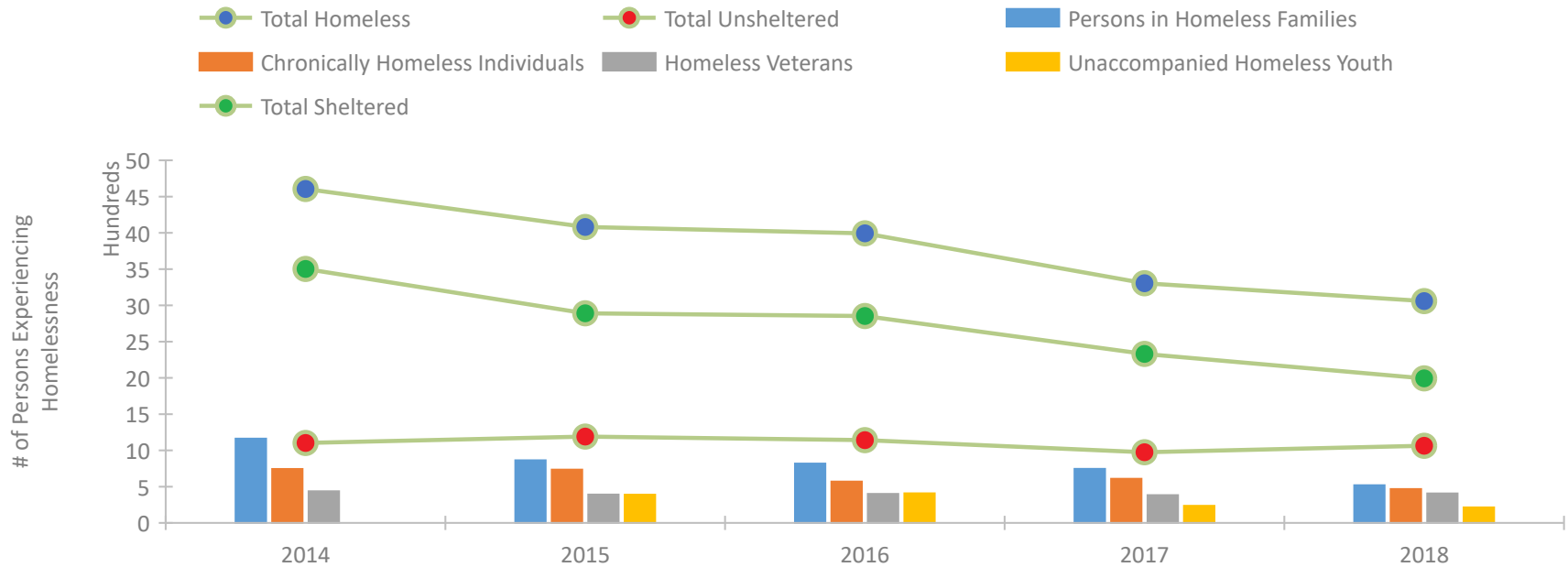
Louisiana Continuum of Care Performance Profile



Housing Inventory Count by Program Type



Homeless Population – Point-in-Time (PIT) Count

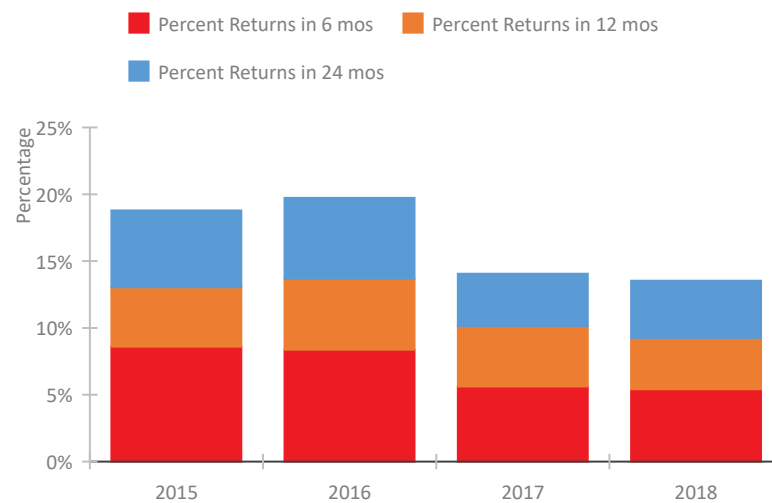


Louisiana Continuum of Care Performance Profile

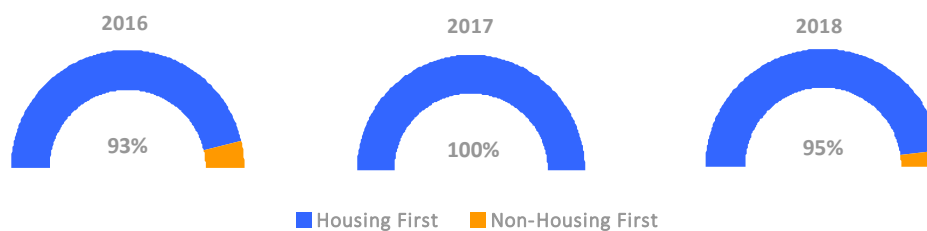
Exits to Permanent Housing by Program Type



Returns to Homelessness Over Time



Proportion of Housing First Projects by Year



Number of Projects by Year

	2016	2017	2018
Housing First Projects	124	297	126
Non-Housing First Projects	10	0	6

Data Summary: Louisiana

Point-In-Time Count Summary

	2014	2015	2016	2017	2018	2017-18 Change	% Change
Number of Sheltered Persons in Families	1,139	837	784	683	492	-191	-28%
Number of Unsheltered Persons in Families	23	27	34	63	27	-36	-57%
Number of Sheltered Individuals	2,245	2,028	2,010	1,602	1,474	-128	-8%
Number of Unsheltered Individuals	1,072	1,161	1,101	911	1,038	127	14%
Total Homeless Persons	4,479	4,053	3,929	3,259	3,031	-228	-7%
Number of Sheltered Families	368	276	231	211	156	-55	-26%
Number of Unsheltered Families	8	9	12	20	8	-12	-60%
Number of Total Families	376	285	243	231	164	-67	-29%
Sheltered Chronically Homeless Individuals	232	255	167	174	147	-27	-16%
Unsheltered Chronically Homeless Individuals	511	480	403	435	320	-115	-26%
Total Chronically Homeless Individuals	743	735	570	609	467	-142	-23%
Sheltered Veterans	332	350	363	329	362	33	10%
Unsheltered Veterans	105	42	37	54	44	-10	-19%
Total Veterans	437	392	400	383	406	23	6%
Sheltered Unaccompanied Youth (up to 24)	--	233	276	186	172	-14	-8%
Unsheltered Unaccompanied Youth (up to 24)	--	156	132	50	42	-8	-16%
Total Unaccompanied Youth (up to 24)	--	389	408	236	214	-22	-9%

System Performance Measures Summary

	2014	2015	2016	2017	2018	2017-18 Change	% Change
Rate People Return to Homelessness in 6 Months	N/A	8.6%	8.4%	5.6%	5.4%	-0.2%	N/A
Number of People who are Homeless for the First Time	N/A	8,579	9,436	9,585	8,822	-763	-8%
Rate People Exit from ES, SH, TH, and RRH to PH	N/A	53.1%	50.0%	51.8%	58.5%	6.7%	N/A
Rate People in PSH and OPH Retain or Exit to PH	N/A	93.4%	94.8%	96.8%	97.5%	0.7%	N/A

Housing Inventory Count Summary

	2014	2015	2016	2017	2018	2017-18 Change	% Change
Emergency Shelter (ES)	1,976	1,931	1,757	1,734	1,508	-226	-13%
Safe Haven (SH)	33	42	50	45	64	19	42%
Transitional Housing (TH)	2,565	2,055	1,868	1,385	1,075	-310	-22%
Permanent Supportive Housing (PSH)	4,596	4,634	4,990	5,107	5,606	499	10%
Rapid Re-Housing (RRH)	375	616	1,032	1,154	2,176	1,022	89%
Other Permanent Housing (OPH)	25	27	13	13	13	0	0%

Award Summary

	2014	2015	2016	2017	2018	2017-18 Change	% Change
Continuum of Care (CoC)	\$31,585,302	\$43,581,916	\$45,603,512	\$47,049,826	\$51,377,386	\$4,327,560	9%
Emergency Solutions Grants (ESG)	\$3,506,023	\$3,764,003	\$3,955,055	\$4,809,085	\$3,935,916	(\$873,169)	-18%