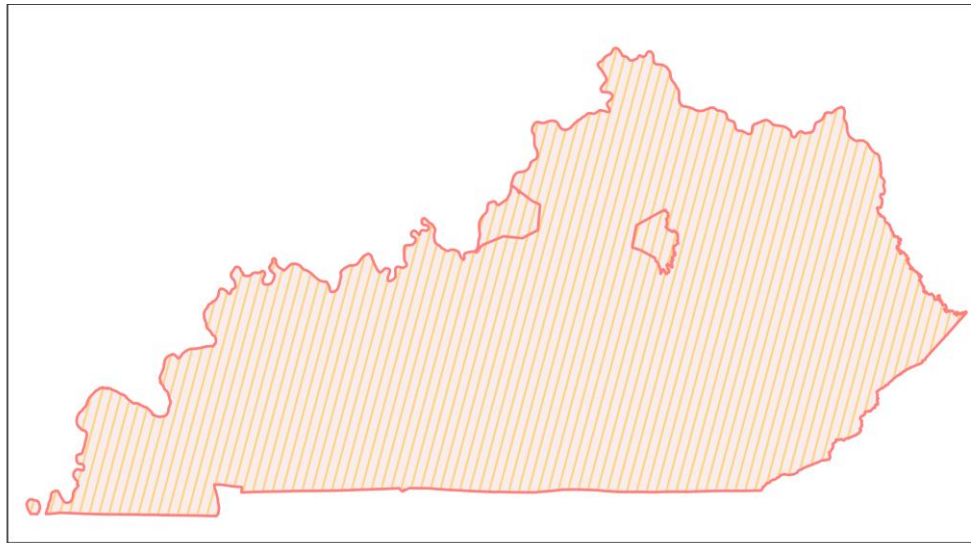
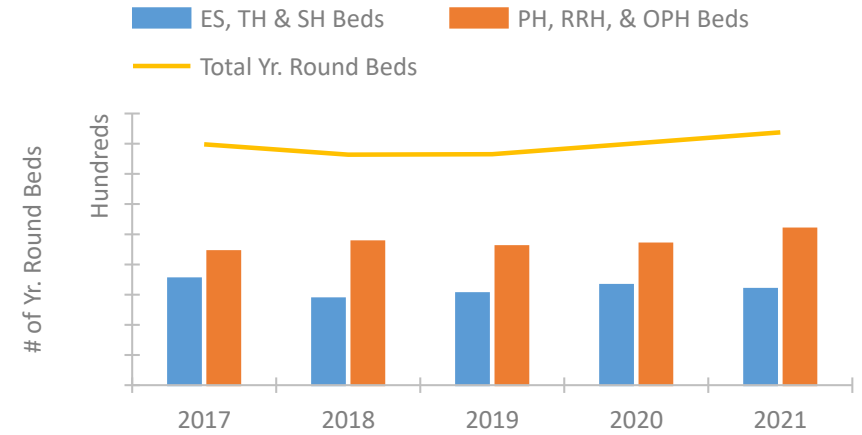


## Kentucky Continuum of Care Performance Profile

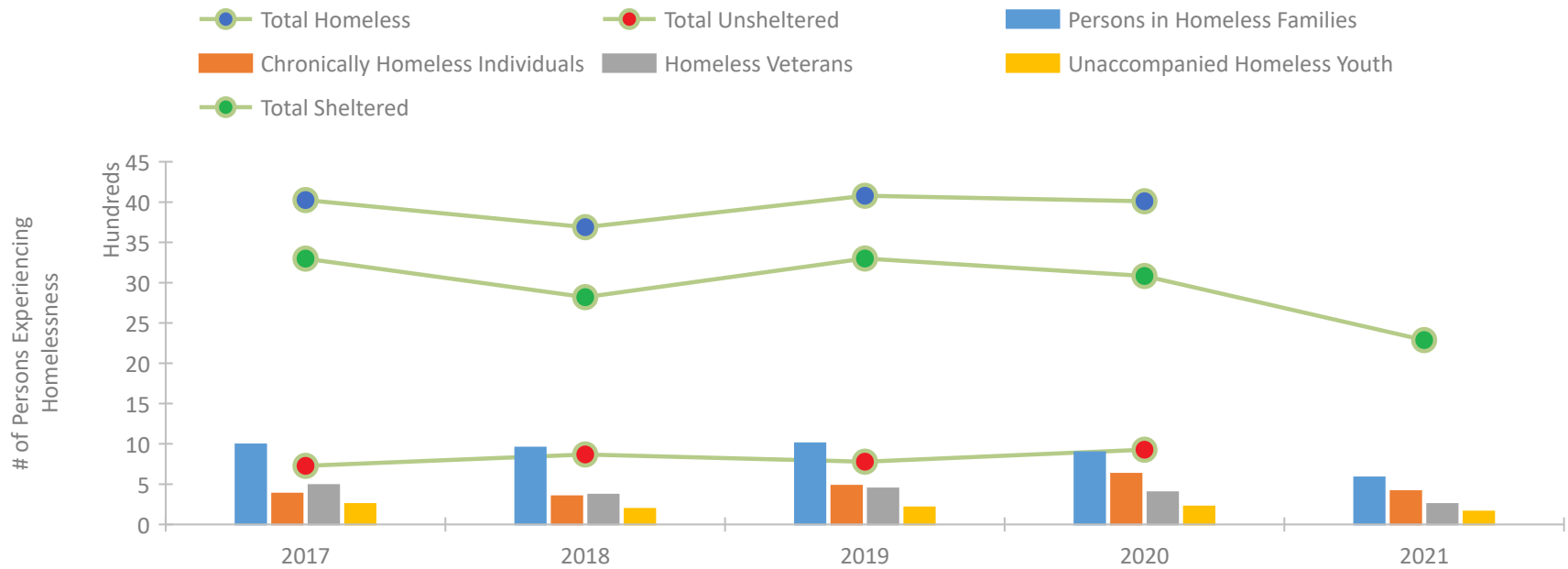


2021 CoC Boundaries 2020 CoC Boundaries

### Housing Inventory Count by Program Type



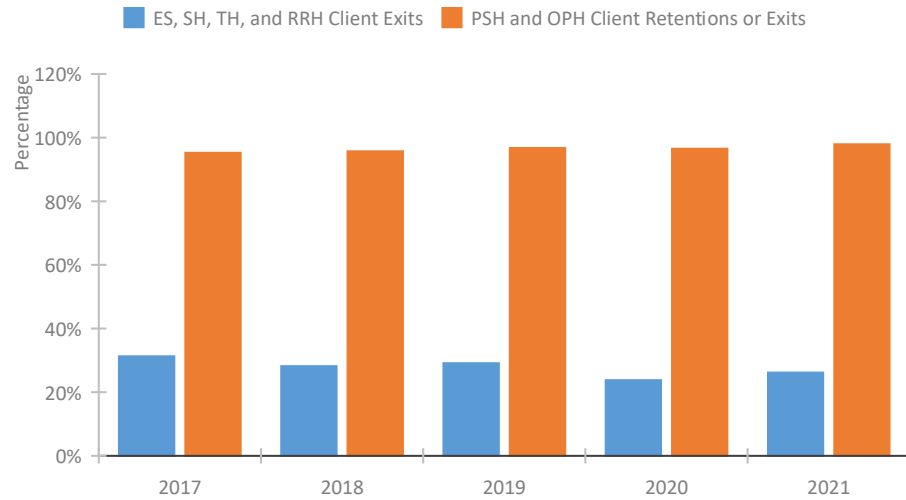
### Homeless Population – Point-in-Time (PIT) Count\*



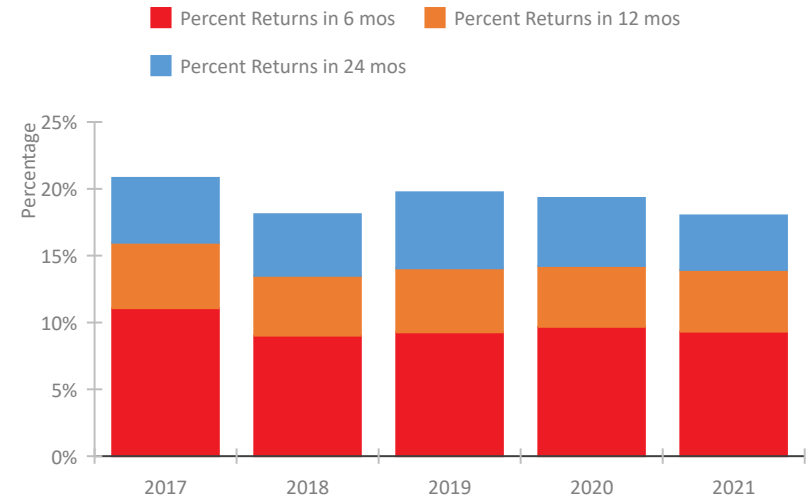
\*In 2021, HUD gave communities the option to cancel or modify the unsheltered survey portion of their counts based on the potential risk of COVID-19 transmission associated with conducting an in-person survey. As a result, HUD has excluded the unsheltered population sub-totals and all unsheltered sub-population data for this reporting period. The user is cautioned that the unsheltered and total homeless counts reported here may be missing data.

## Kentucky Continuum of Care Performance Profile

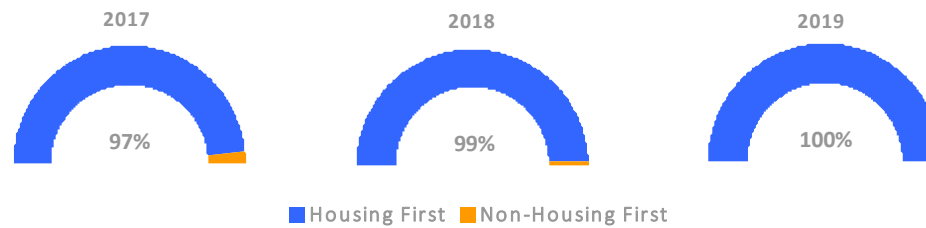
### Exits to Permanent Housing by Program Type



### Returns to Homelessness Over Time



### Proportion of Housing First Projects by Year†



### Number of Projects by Year

	2017	2018	2019
Housing First Projects	93	92	103
Non-Housing First Projects	3	1	0

†2021 Data unavailable at the time of report publication. In 2020 HUD awarded renewal projects noncompetitively, therefore no new data was collected and Housing First data remains the same from 2019 to 2020.

## Data Summary: Kentucky

### Point-In-Time Count Summary\*

	2017	2018	2019	2020	2021	2020-21 Change	% Change
Number of Sheltered Persons in Families	912	864	948	850	583	-267	-31%
Number of Unsheltered Persons in Families	81	89	58	45	0	-45	-100%
Number of Sheltered Individuals	2,386	1,956	2,352	2,233	1,704	-529	-24%
Number of Unsheltered Individuals	646	779	721	883	--	--	--
<b>Total Homeless Persons</b>	<b>4,025</b>	<b>3,688</b>	<b>4,079</b>	<b>4,011</b>	<b>2,287</b>	<b>-1,724</b>	<b>-43%</b>
Number of Sheltered Families	309	262	294	264	187	-77	-29%
Number of Unsheltered Families	25	24	19	13	--	--	--
<b>Number of Total Families</b>	<b>334</b>	<b>286</b>	<b>313</b>	<b>277</b>	<b>187</b>	<b>-90</b>	<b>-32%</b>
Sheltered Chronically Homeless Individuals	252	262	399	439	413	-26	-6%
Unsheltered Chronically Homeless Individuals	131	87	80	190	--	--	--
<b>Total Chronically Homeless Individuals</b>	<b>383</b>	<b>349</b>	<b>479</b>	<b>629</b>	<b>413</b>	<b>-216</b>	<b>-34%</b>
Sheltered Veterans	445	308	412	359	254	-105	-29%
Unsheltered Veterans	44	61	35	40	--	--	--
<b>Total Veterans</b>	<b>489</b>	<b>369</b>	<b>447</b>	<b>399</b>	<b>254</b>	<b>-145</b>	<b>-36%</b>
Sheltered Unaccompanied Youth (up to 24)	194	141	156	152	159	7	5%
Unsheltered Unaccompanied Youth (up to 24)	59	52	55	69	--	--	--
<b>Total Unaccompanied Youth (up to 24)</b>	<b>253</b>	<b>193</b>	<b>211</b>	<b>221</b>	<b>159</b>	<b>-62</b>	<b>-28%</b>

### System Performance Measures Summary

	2017	2018	2019	2020	2021	2020-21 Change	% Change
Rate People Return to Homelessness in 6 Months	11.1%	9.0%	9.3%	9.7%	9.3%	-0.4%	N/A
Number of People who are Homeless for the First Time	9,510	8,890	9,904	8,564	9,418	854	10%
Rate People Exit from ES, SH, TH, and RRH to PH	31.3%	28.2%	29.1%	23.8%	26.2%	2.4%	N/A
Rate People in PSH and OPH Retain or Exit to PH	95.2%	95.7%	96.7%	96.5%	97.9%	1.4%	N/A

### Housing Inventory Count Summary

	2017	2018	2019	2020	2021	2020-21 Change	% Change
Emergency Shelter (ES)	2,276	2,310	2,397	2,665	2,483	-182	-7%
Transitional Housing (TH)	1,262	565	652	657	707	50	8%
Permanent Supportive Housing (PSH)	3,289	3,253	3,228	3,187	3,339	152	5%
Rapid Re-Housing (RRH)	717	1,069	1,139	1,262	1,312	50	4%
Other Permanent Housing (OPH)	433	443	236	245	537	292	119%

### Award Summary

	2017	2018	2019	2020	2021	2020-21 Change	% Change
<b>Continuum of Care (CoC)</b>	\$19,389,282	\$21,161,372	\$24,453,736	\$27,225,425	\$29,582,532	\$2,357,107	9%
<b>Emergency Solutions Grants (ESG)</b>	\$4,785,022	\$3,475,305	\$3,601,251	\$3,763,955	\$3,780,237	\$16,282	0%
<b>Youth Homelessness Demonstration Program (YHDP)</b>	\$3,452,520	--	--	--	--	--	--

\*In 2021, HUD gave communities the option to cancel or modify the unsheltered survey portion of their counts based on the potential risk of COVID-19 transmission associated with conducting an in-person survey. As a result, HUD has excluded the unsheltered population sub-totals and all unsheltered sub-population data for this reporting period. The user is cautioned that the unsheltered and total homeless counts reported here may be missing data.