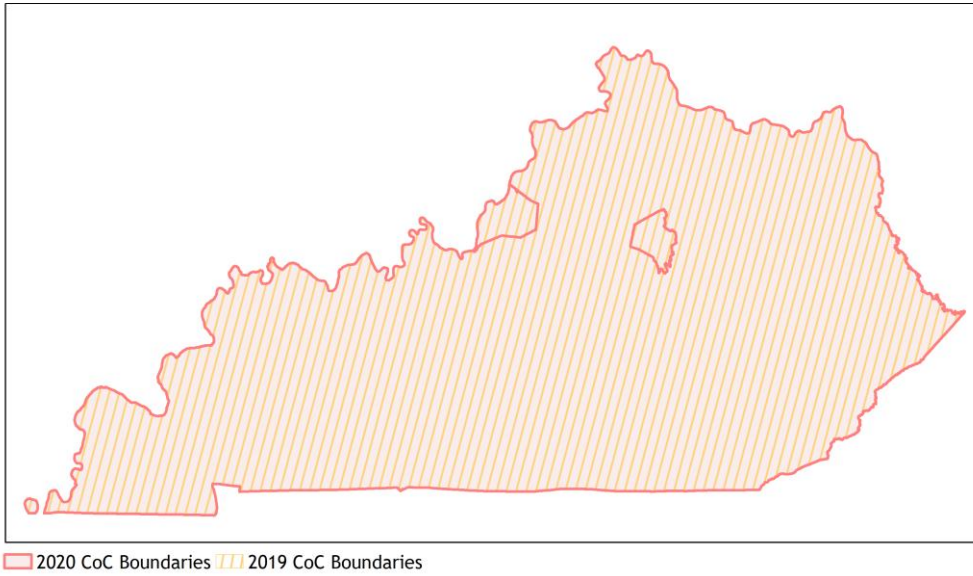
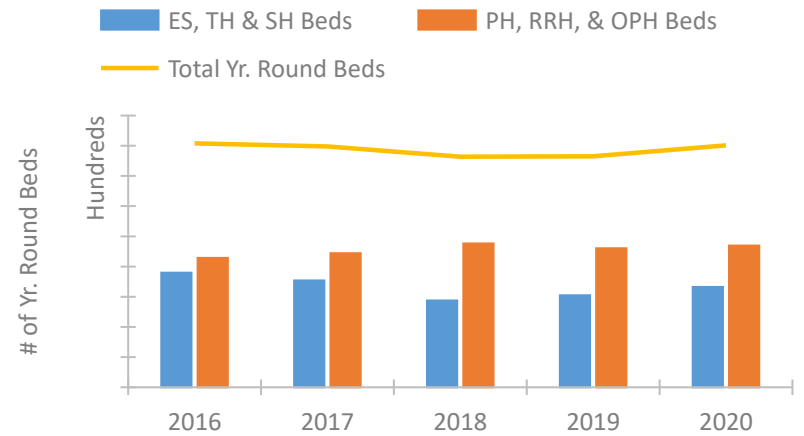


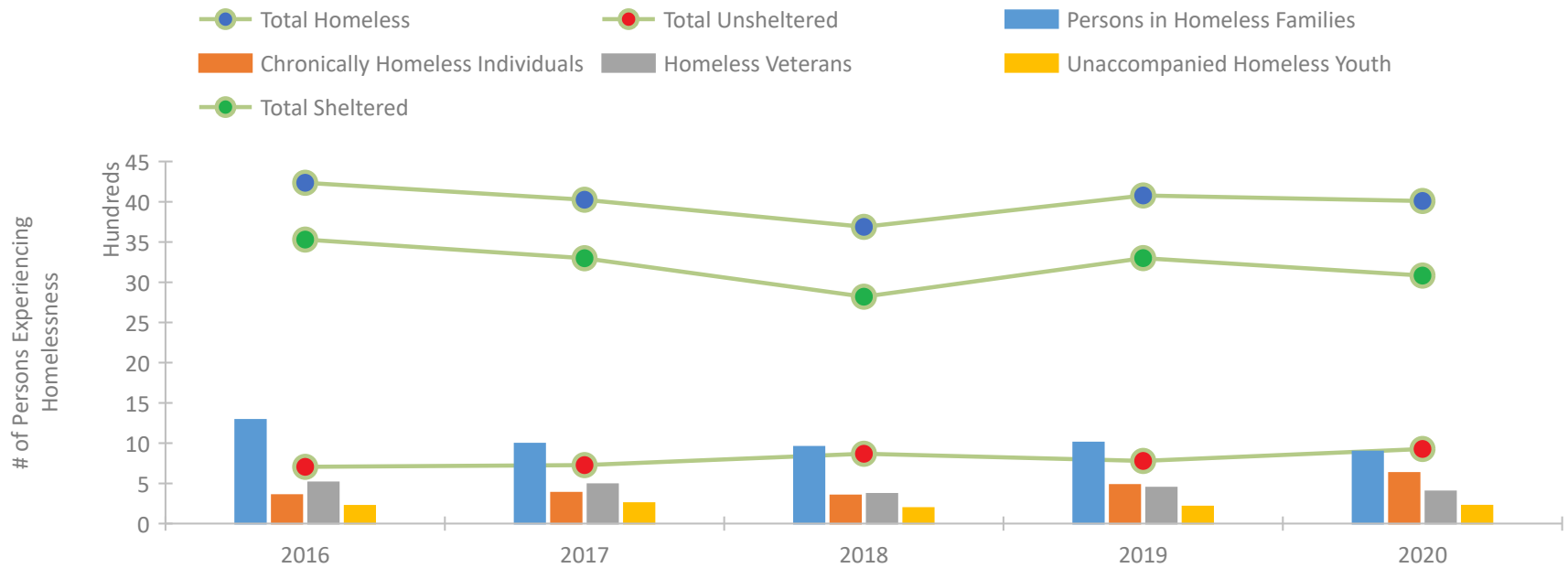
Kentucky Continuum of Care Performance Profile



Housing Inventory Count by Program Type

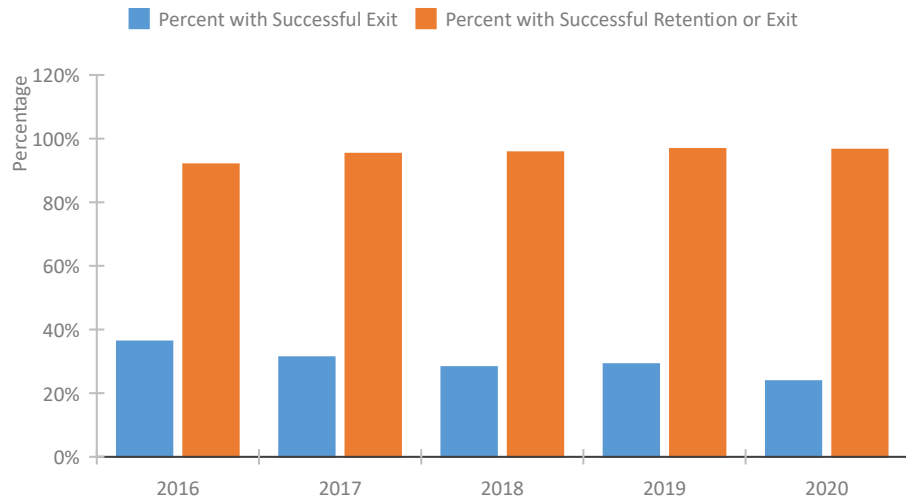


Homeless Population – Point-in-Time (PIT) Count

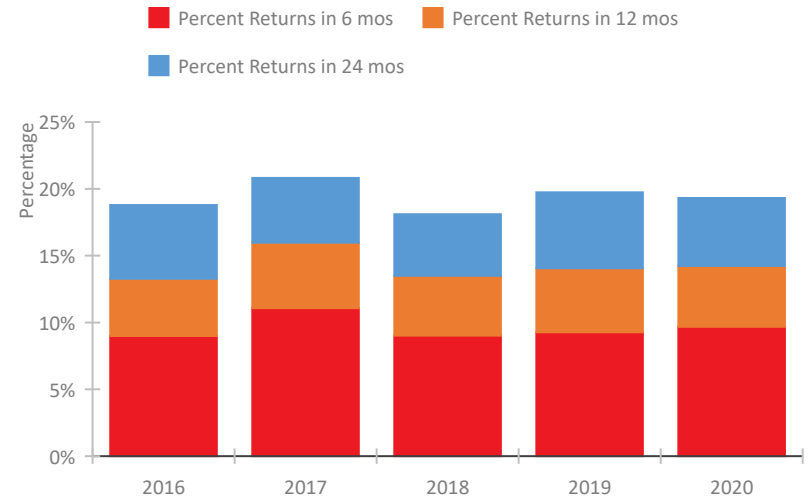


Kentucky Continuum of Care Performance Profile

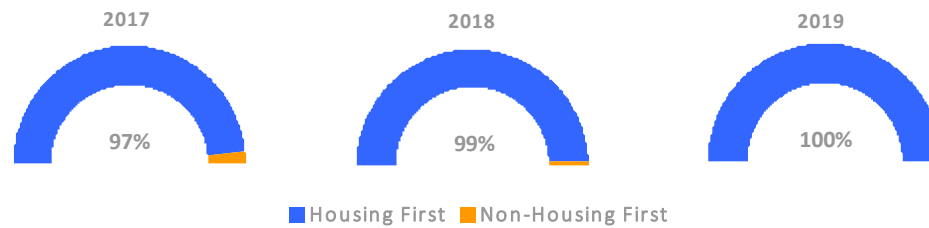
Exits to Permanent Housing by Program Type



Returns to Homelessness Over Time



Proportion of Housing First Projects by Year*



Number of Projects by Year			
	2017	2018	2019
Housing First Projects	93	92	103
Non-Housing First Projects	3	1	0

*In 2020 HUD awarded renewal projects noncompetitively, therefore no new data was collected and Housing First data remains the same from 2019 to 2020.

Data Summary: Kentucky

Point-In-Time Count Summary

	2016	2017	2018	2019	2020	2019-20 Change	% Change
Number of Sheltered Persons in Families	1,131	912	864	948	850	-98	-10%
Number of Unsheltered Persons in Families	157	81	89	58	45	-13	-22%
Number of Sheltered Individuals	2,400	2,386	1,956	2,352	2,233	-119	-5%
Number of Unsheltered Individuals	549	646	779	721	883	162	22%
Total Homeless Persons	4,237	4,025	3,688	4,079	4,011	-68	-2%
Number of Sheltered Families	365	309	262	294	264	-30	-10%
Number of Unsheltered Families	45	25	24	19	13	-6	-32%
Number of Total Families	410	334	286	313	277	-36	-12%
Sheltered Chronically Homeless Individuals	218	252	262	399	439	40	10%
Unsheltered Chronically Homeless Individuals	135	131	87	80	190	110	138%
Total Chronically Homeless Individuals	353	383	349	479	629	150	31%
Sheltered Veterans	452	445	308	412	359	-53	-13%
Unsheltered Veterans	60	44	61	35	40	5	14%
Total Veterans	512	489	369	447	399	-48	-11%
Sheltered Unaccompanied Youth (up to 24)	172	194	141	156	152	-4	-3%
Unsheltered Unaccompanied Youth (up to 24)	48	59	52	55	69	14	25%
Total Unaccompanied Youth (up to 24)	220	253	193	211	221	10	5%

System Performance Measures Summary

	2016	2017	2018	2019	2020	2019-20 Change	% Change
Rate People Return to Homelessness in 6 Months	9.0%	11.1%	9.0%	9.3%	9.7%	0.4%	N/A
Number of People who are Homeless for the First Time	10,074	9,510	8,890	9,904	8,564	-1,340	-13.5%
Rate People Exit from ES, SH, TH, and RRH to PH	36.2%	31.3%	28.2%	29.1%	23.8%	-5.3%	N/A
Rate People in PSH and OPH Retain or Exit to PH	91.9%	95.2%	95.7%	96.7%	96.5%	-0.2%	N/A

Housing Inventory Count Summary

	2016	2017	2018	2019	2020	2019-20 Change	% Change
Emergency Shelter (ES)	2,228	2,276	2,310	2,397	2,665	268	11%
Transitional Housing (TH)	1,569	1,262	565	652	657	5	1%
Permanent Supportive Housing (PSH)	3,449	3,289	3,253	3,228	3,187	-41	-1%
Rapid Re-Housing (RRH)	480	717	1,069	1,139	1,262	123	11%
Other Permanent Housing (OPH)	324	433	443	236	245	9	4%

Award Summary

	2016	2017	2018	2019	2020	2019-20 Change	% Change
Continuum of Care (CoC)	\$19,063,607	\$19,389,282	\$21,161,372	\$24,453,736	\$27,225,425	\$2,771,689	11%
Emergency Solutions Grants (ESG)	\$3,509,818	\$4,785,022	\$3,475,305	\$3,601,251	\$3,763,955	\$162,704	5%
Youth Homelessness Demonstration Program (YHDP)	\$1,926,151	\$3,452,520	--	--	--	--	--