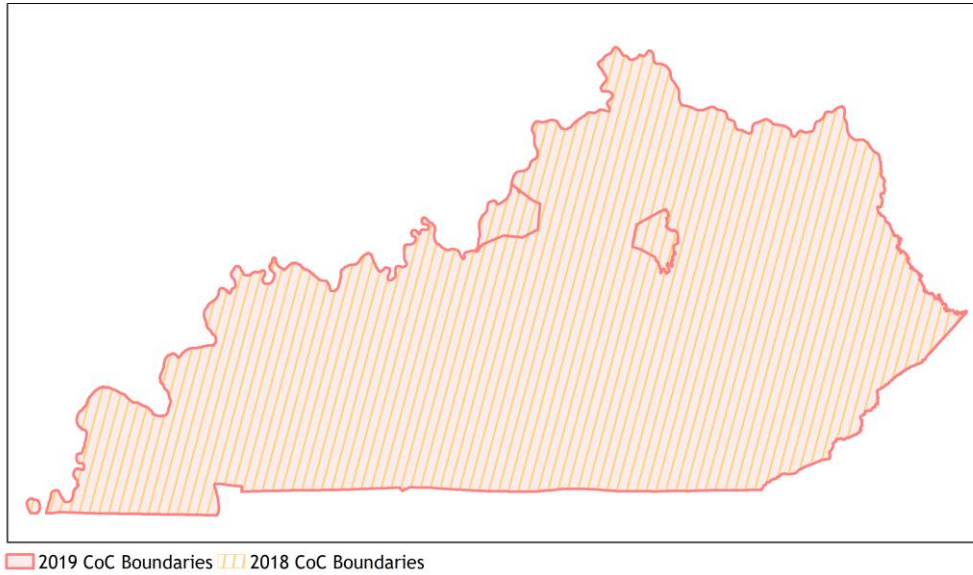
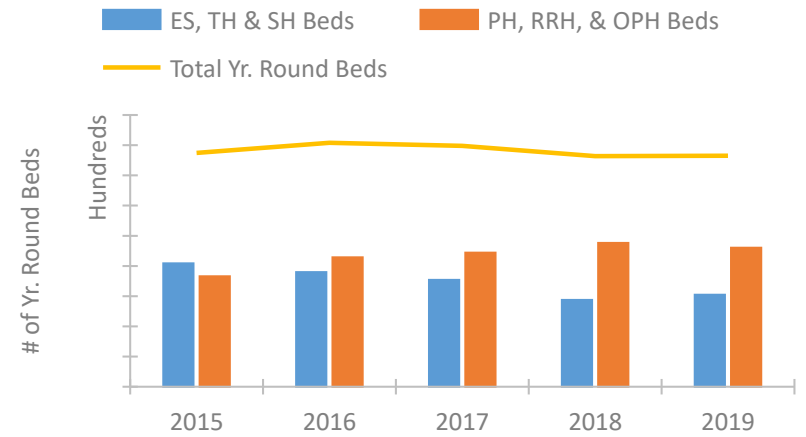


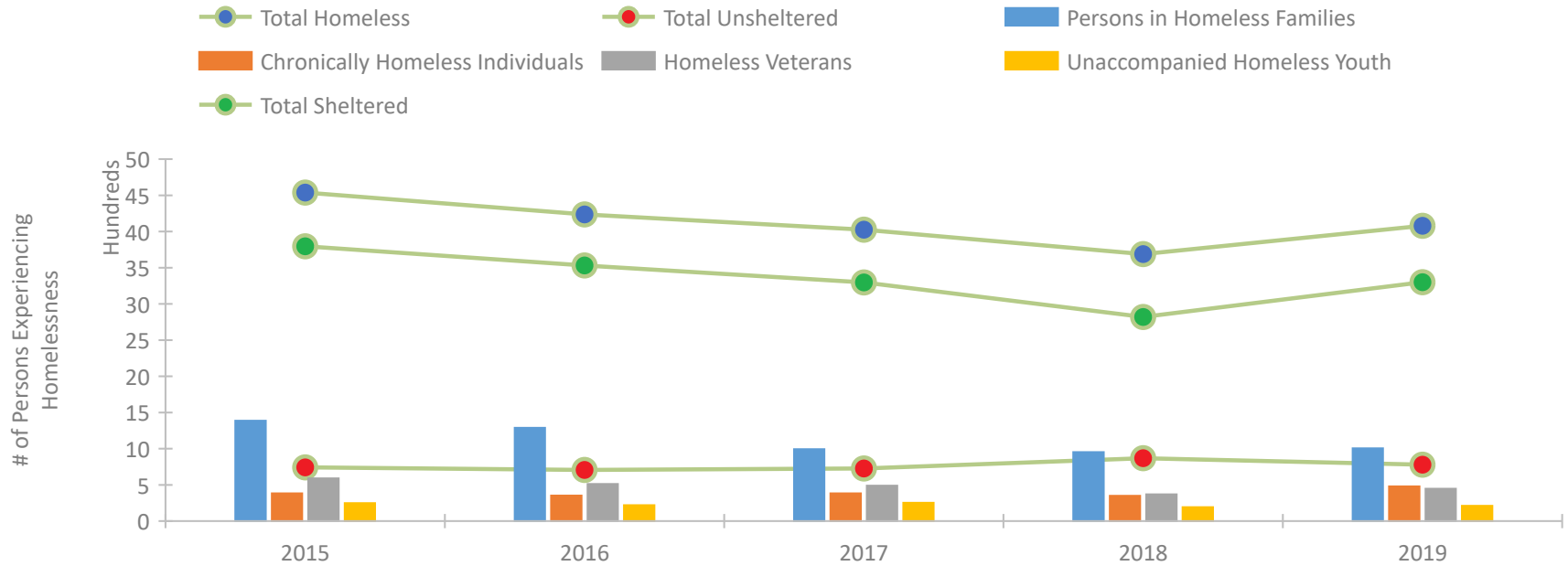
## Kentucky Continuum of Care Performance Profile



### Housing Inventory Count by Program Type

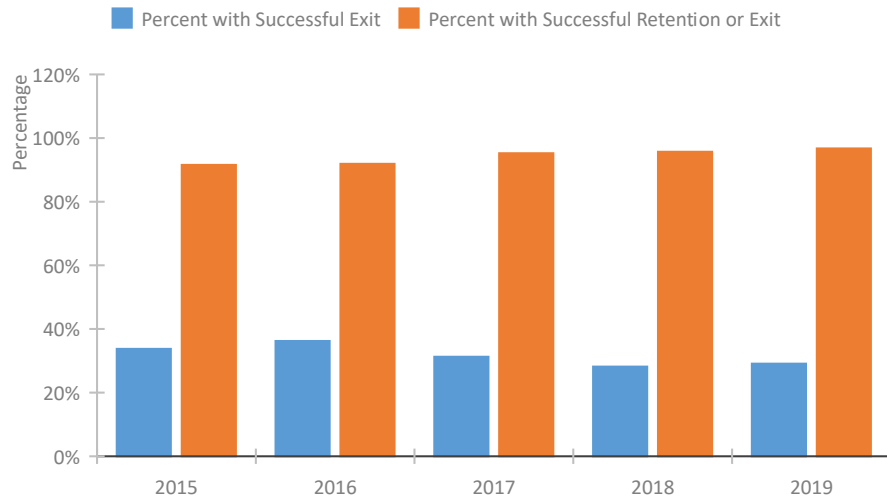


### Homeless Population – Point-in-Time (PIT) Count

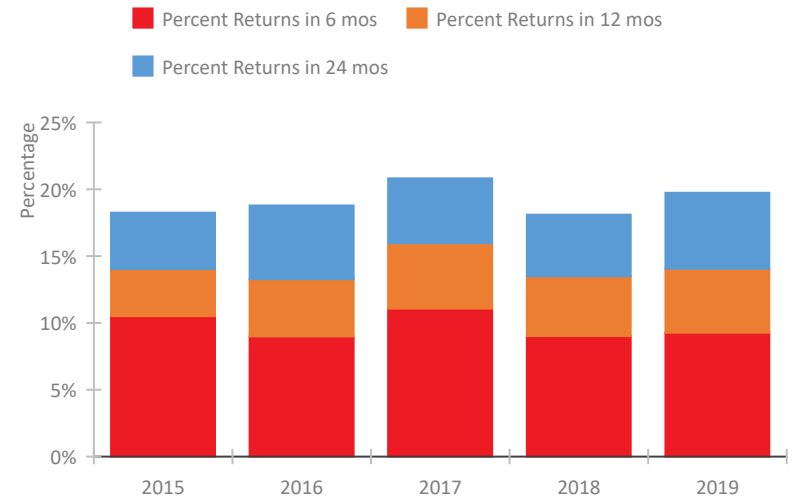


## Kentucky Continuum of Care Performance Profile

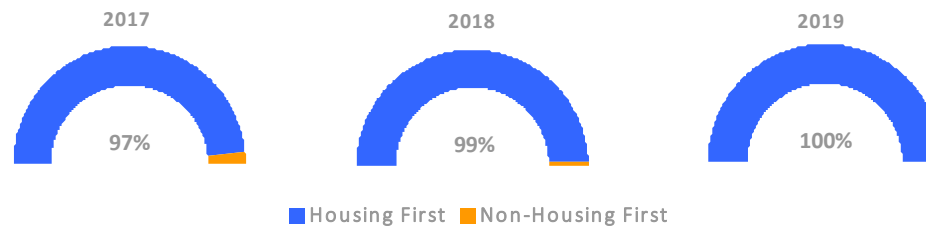
### Exits to Permanent Housing by Program Type



### Returns to Homelessness Over Time



### Proportion of Housing First Projects by Year



### Number of Projects by Year

	2017	2018	2019
Housing First Projects	93	92	103
Non-Housing First Projects	3	1	0

## Data Summary: Kentucky

### Point-In-Time Count Summary

	2015	2016	2017	2018	2019	2018-19 Change	% Change
Number of Sheltered Persons in Families	1,174	1,131	912	864	948	84	10%
Number of Unsheltered Persons in Families	213	157	81	89	58	-31	-35%
Number of Sheltered Individuals	2,622	2,400	2,386	1,956	2,352	396	20%
Number of Unsheltered Individuals	529	549	646	779	721	-58	-7%
<b>Total Homeless Persons</b>	<b>4,538</b>	<b>4,237</b>	<b>4,025</b>	<b>3,688</b>	<b>4,079</b>	<b>391</b>	<b>11%</b>
Number of Sheltered Families	398	365	309	262	294	32	12%
Number of Unsheltered Families	69	45	25	24	19	-5	-21%
<b>Number of Total Families</b>	<b>467</b>	<b>410</b>	<b>334</b>	<b>286</b>	<b>313</b>	<b>27</b>	<b>9%</b>
Sheltered Chronically Homeless Individuals	345	218	252	262	399	137	52%
Unsheltered Chronically Homeless Individuals	38	135	131	87	80	-7	-8%
<b>Total Chronically Homeless Individuals</b>	<b>383</b>	<b>353</b>	<b>383</b>	<b>349</b>	<b>479</b>	<b>130</b>	<b>37%</b>
Sheltered Veterans	541	452	445	308	412	104	34%
Unsheltered Veterans	50	60	44	61	35	-26	-43%
<b>Total Veterans</b>	<b>591</b>	<b>512</b>	<b>489</b>	<b>369</b>	<b>447</b>	<b>78</b>	<b>21%</b>
Sheltered Unaccompanied Youth (up to 24)	194	172	194	141	156	15	11%
Unsheltered Unaccompanied Youth (up to 24)	54	48	59	52	55	3	6%
<b>Total Unaccompanied Youth (up to 24)</b>	<b>248</b>	<b>220</b>	<b>253</b>	<b>193</b>	<b>211</b>	<b>18</b>	<b>9%</b>

### System Performance Measures Summary

	2015	2016	2017	2018	2019	2018-19 Change	% Change
Rate People Return to Homelessness in 6 Months	10.5%	9.0%	11.1%	9.0%	9.3%	0.3%	N/A
Number of People who are Homeless for the First Time	10,684	10,074	9,510	8,890	9,904	1,014	11.4%
Rate People Exit from ES, SH, TH, and RRH to PH	33.8%	36.2%	31.3%	28.2%	29.1%	0.9%	N/A
Rate People in PSH and OPH Retain or Exit to PH	91.6%	91.9%	95.2%	95.7%	96.7%	1.1%	N/A

### Housing Inventory Count Summary

	2015	2016	2017	2018	2019	2018-19 Change	% Change
Emergency Shelter (ES)	2,320	2,228	2,276	2,310	2,397	87	4%
Transitional Housing (TH)	1,767	1,569	1,262	565	652	87	15%
Permanent Supportive Housing (PSH)	3,347	3,449	3,289	3,253	3,228	-25	-1%
Rapid Re-Housing (RRH)	212	480	717	1,069	1,139	70	7%
Other Permanent Housing (OPH)	98	324	433	443	236	-207	-47%

### Award Summary

	2015	2016	2017	2018	2019	2018-19 Change	% Change
<b>Continuum of Care (CoC)</b>	\$18,635,431	\$19,063,607	\$19,389,282	\$21,161,372	\$24,453,736	\$3,292,364	16%
<b>Emergency Solutions Grants (ESG)</b>	\$3,526,513	\$3,509,818	\$4,785,022	\$3,475,305	\$3,601,251	\$125,946	4%
<b>Youth Homelessness Demonstration Program (YHDP)</b>	N/A	\$1,926,151	\$3,452,520	--	--	--	--