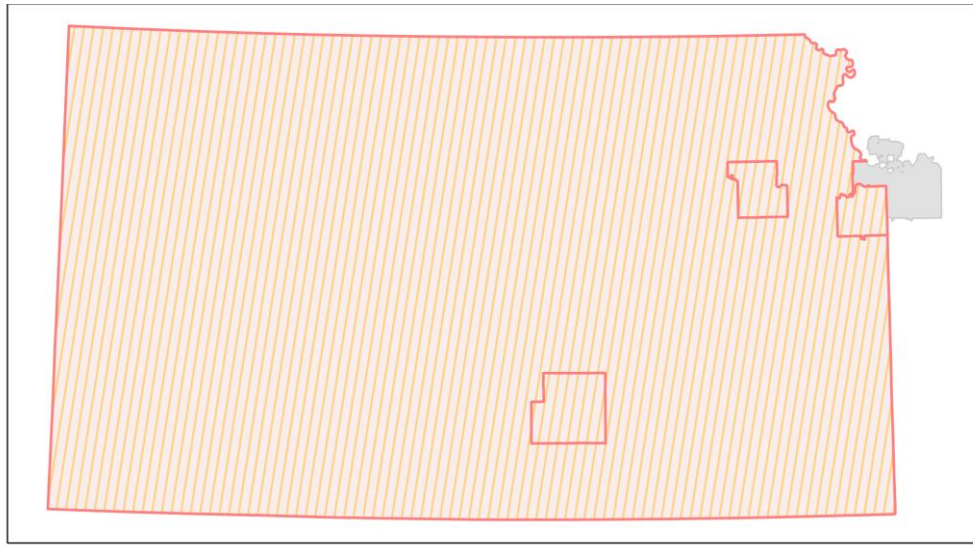
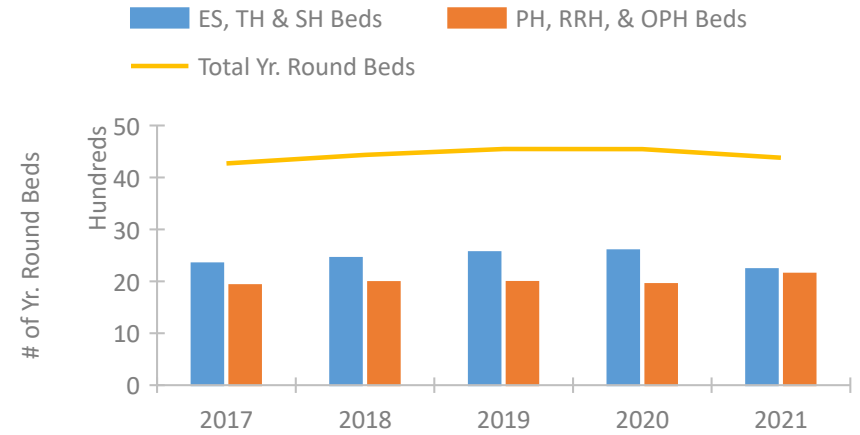


## Kansas Continuum of Care Performance Profile

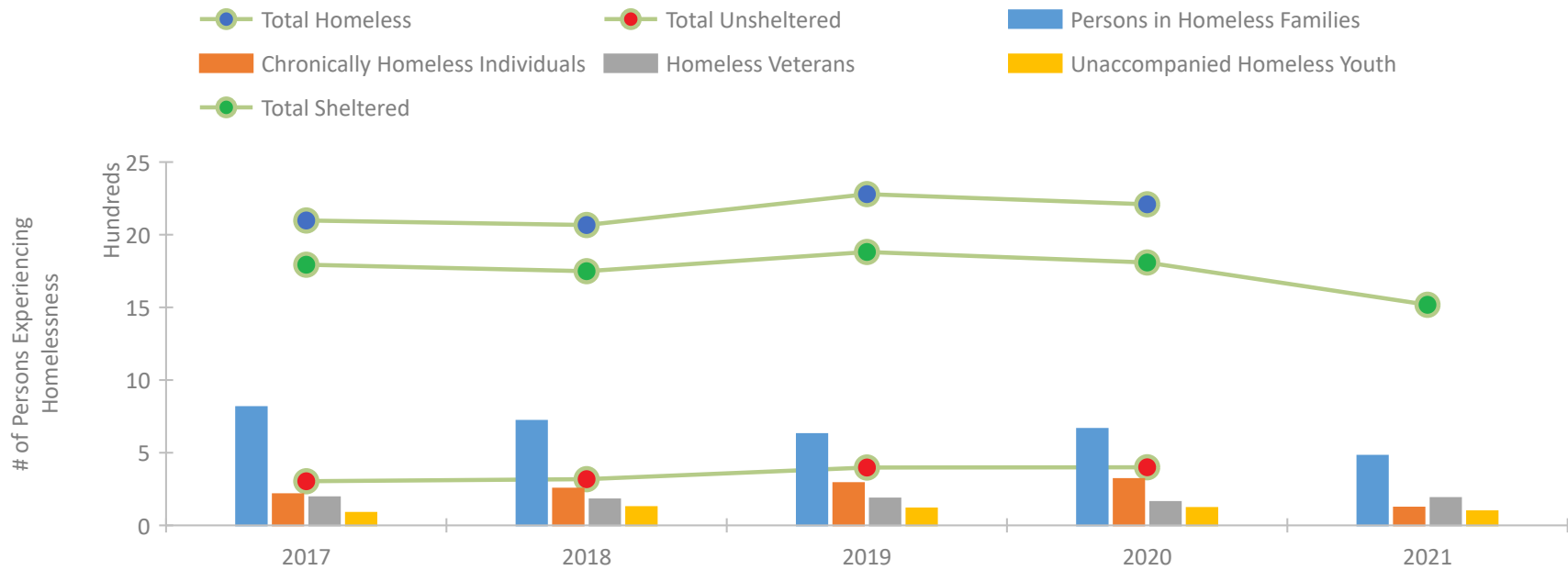


2021 CoC Boundaries 2020 CoC Boundaries

## Housing Inventory Count by Program Type



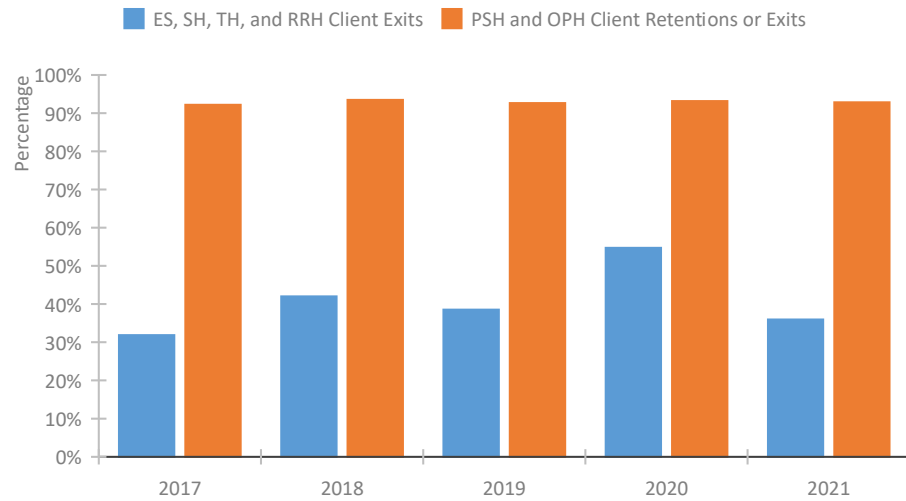
## Homeless Population – Point-in-Time (PIT) Count\*



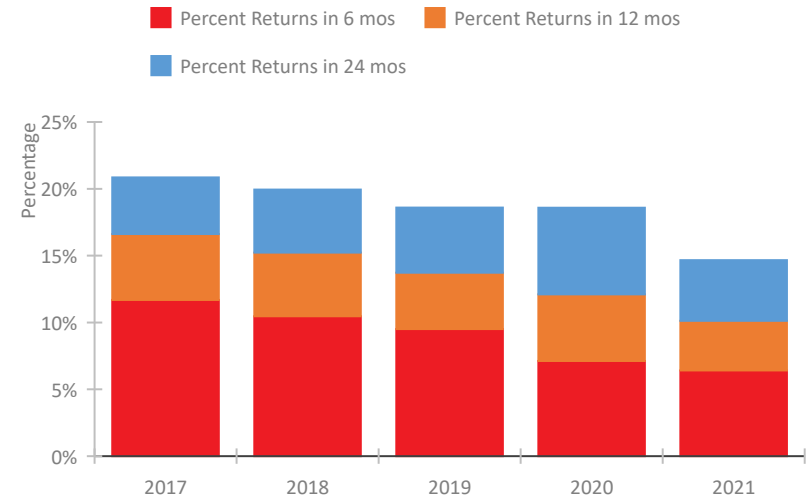
\*In 2021, HUD gave communities the option to cancel or modify the unsheltered survey portion of their counts based on the potential risk of COVID-19 transmission associated with conducting an in-person survey. As a result, HUD has excluded the unsheltered population sub-totals and all unsheltered sub-population data for this reporting period. The user is cautioned that the unsheltered and total homeless counts reported here may be missing data.

## Kansas Continuum of Care Performance Profile

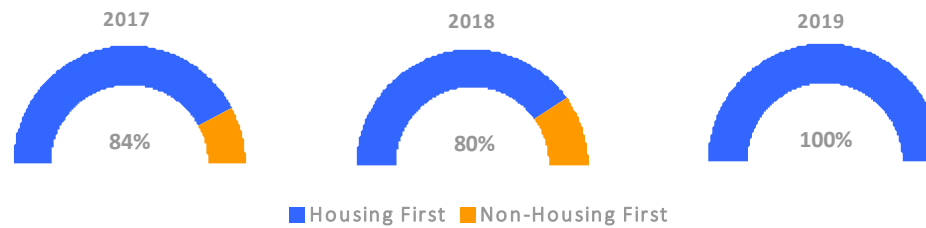
### Exits to Permanent Housing by Program Type



### Returns to Homelessness Over Time



### Proportion of Housing First Projects by Year†



### Number of Projects by Year

	2017	2018	2019
Housing First Projects	38	36	35
Non-Housing First Projects	7	9	0

†2021 Data unavailable at the time of report publication. In 2020 HUD awarded renewal projects noncompetitively, therefore no new data was collected and Housing First data remains the same from 2019 to 2020.

## Data Summary: Kansas

### Point-In-Time Count Summary\*

	2017	2018	2019	2020	2021	2020-21 Change	% Change
Number of Sheltered Persons in Families	814	717	620	598	479	-119	-20%
Number of Unsheltered Persons in Families	0	2	8	66	0	-66	-100%
Number of Sheltered Individuals	980	1,032	1,261	1,211	1,039	-172	-14%
Number of Unsheltered Individuals	304	316	390	334	--	--	--
<b>Total Homeless Persons</b>	<b>2,098</b>	<b>2,067</b>	<b>2,279</b>	<b>2,209</b>	<b>1,518</b>	<b>-691</b>	<b>-31%</b>
Number of Sheltered Families	247	203	204	193	172	-21	-11%
Number of Unsheltered Families	0	1	2	16	--	--	--
<b>Number of Total Families</b>	<b>247</b>	<b>204</b>	<b>206</b>	<b>209</b>	<b>172</b>	<b>-37</b>	<b>-18%</b>
Sheltered Chronically Homeless Individuals	146	157	153	156	122	-34	-22%
Unsheltered Chronically Homeless Individuals	68	96	138	163	--	--	--
<b>Total Chronically Homeless Individuals</b>	<b>214</b>	<b>253</b>	<b>291</b>	<b>319</b>	<b>122</b>	<b>-197</b>	<b>-62%</b>
Sheltered Veterans	156	156	153	138	188	50	36%
Unsheltered Veterans	37	23	32	23	--	--	--
<b>Total Veterans</b>	<b>193</b>	<b>179</b>	<b>185</b>	<b>161</b>	<b>188</b>	<b>27</b>	<b>17%</b>
Sheltered Unaccompanied Youth (up to 24)	63	107	100	97	97	0	0%
Unsheltered Unaccompanied Youth (up to 24)	23	19	16	23	--	--	--
<b>Total Unaccompanied Youth (up to 24)</b>	<b>86</b>	<b>126</b>	<b>116</b>	<b>120</b>	<b>97</b>	<b>-23</b>	<b>-19%</b>

### System Performance Measures Summary

	2017	2018	2019	2020	2021	2020-21 Change	% Change
Rate People Return to Homelessness in 6 Months	11.7%	10.5%	9.5%	7.1%	6.4%	-0.7%	N/A
Number of People who are Homeless for the First Time	4,351	3,516	3,519	2,817	4,696	1,879	66.7%
Rate People Exit from ES, SH, TH, and RRH to PH	31.9%	42.0%	38.6%	54.7%	36.0%	-18.8%	N/A
Rate People in PSH and OPH Retain or Exit to PH	92.2%	93.5%	92.6%	93.2%	92.9%	-0.3%	N/A

### Housing Inventory Count Summary

	2017	2018	2019	2020	2021	2020-21 Change	% Change
Emergency Shelter (ES)	1,696	1,655	1,685	1,705	1,488	-217	-13%
Safe Haven (SH)	20	20	--	--	15	--	--
Transitional Housing (TH)	629	775	876	893	732	-161	-18%
Permanent Supportive Housing (PSH)	1,362	1,348	1,373	1,275	1,255	-20	-2%
Rapid Re-Housing (RRH)	563	638	615	672	582	-90	-13%
Other Permanent Housing (OPH)	--	--	--	--	309	--	--

### Award Summary

	2017	2018	2019	2020	2021	2020-21 Change	% Change
<b>Continuum of Care (CoC)</b>	\$7,835,720	\$7,877,964	\$7,768,816	\$8,089,516	\$8,250,416	\$160,900	2%
<b>Emergency Solutions Grants (ESG)</b>	\$2,723,827	\$1,934,349	\$2,190,279	\$2,255,454	\$2,262,018	\$6,564	0%

\*In 2021, HUD gave communities the option to cancel or modify the unsheltered survey portion of their counts based on the potential risk of COVID-19 transmission associated with conducting an in-person survey. As a result, HUD has excluded the unsheltered population sub-totals and all unsheltered sub-population data for this reporting period. The user is cautioned that the unsheltered and total homeless counts reported here may be missing data.