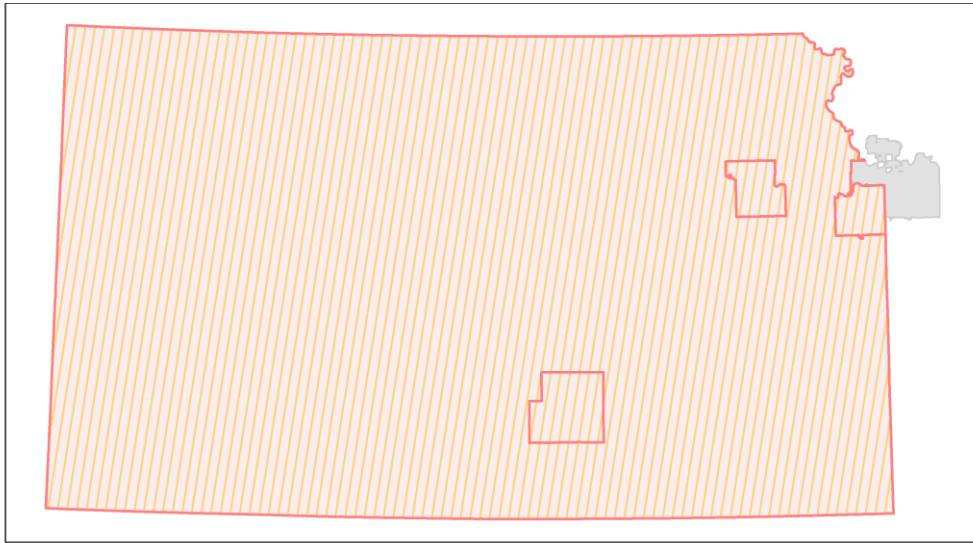
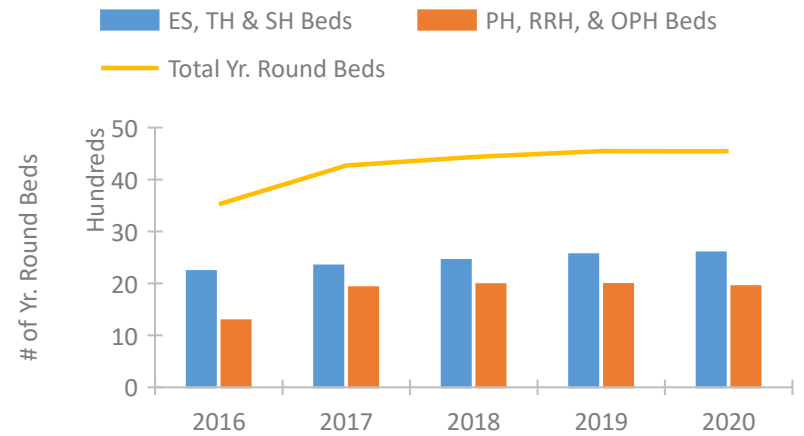


Kansas Continuum of Care Performance Profile

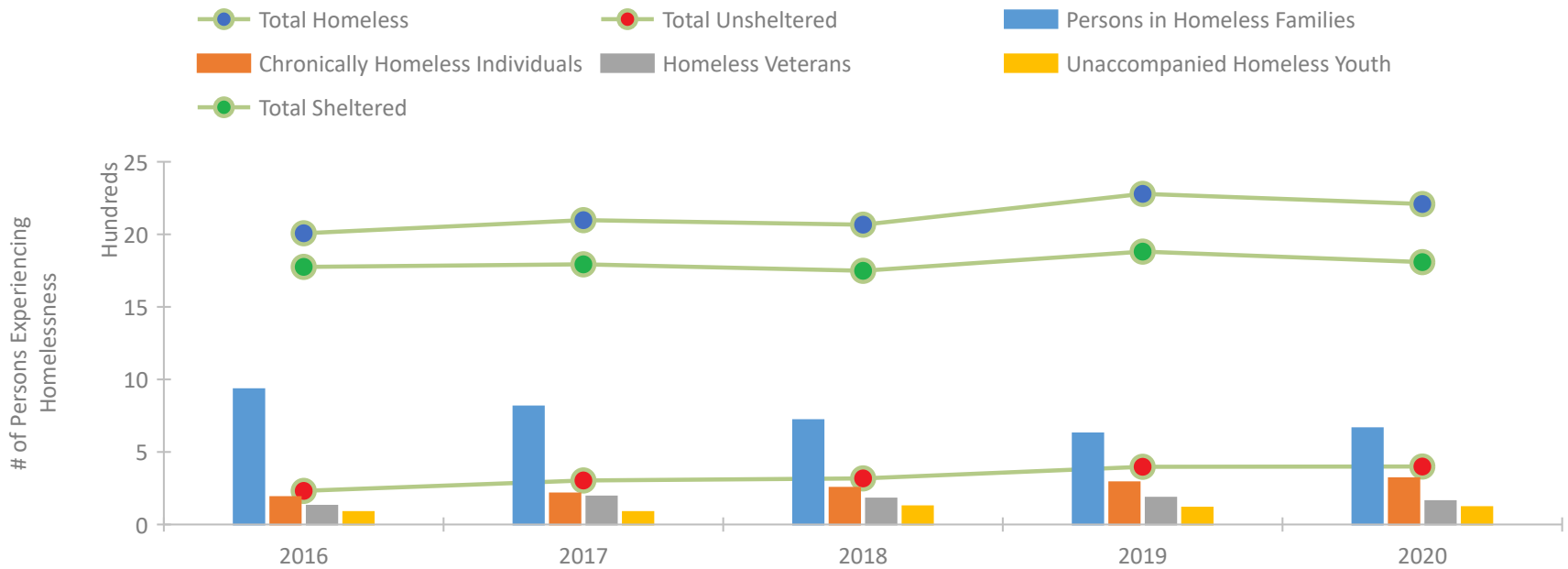


2020 CoC Boundaries 2019 CoC Boundaries

Housing Inventory Count by Program Type



Homeless Population – Point-in-Time (PIT) Count

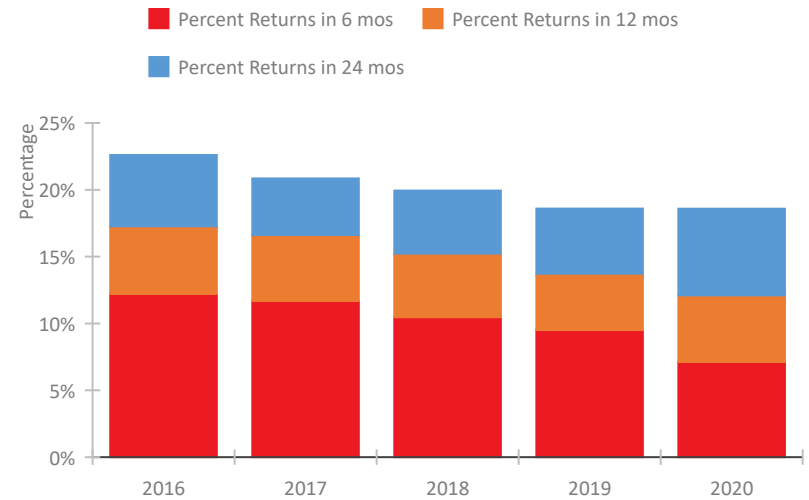


Kansas Continuum of Care Performance Profile

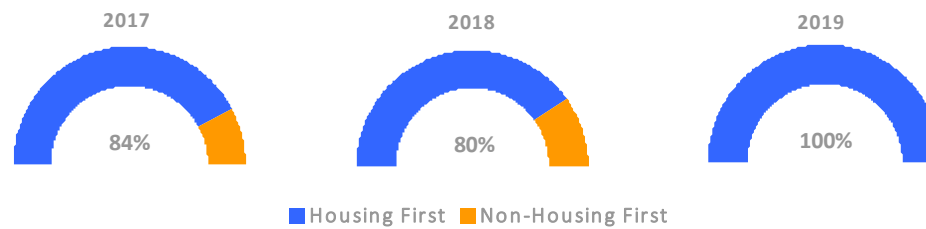
Exits to Permanent Housing by Program Type



Returns to Homelessness Over Time



Proportion of Housing First Projects by Year*



Number of Projects by Year			
	2017	2018	2019
Housing First Projects	38	36	35
Non-Housing First Projects	7	9	0

*In 2020 HUD awarded renewal projects noncompetitively, therefore no new data was collected and Housing First data remains the same from 2019 to 2020.

Data Summary: Kansas

Point-In-Time Count Summary

	2016	2017	2018	2019	2020	2019-20 Change	% Change
Number of Sheltered Persons in Families	923	814	717	620	598	-22	-4%
Number of Unsheltered Persons in Families	10	0	2	8	66	58	725%
Number of Sheltered Individuals	853	980	1,032	1,261	1,211	-50	-4%
Number of Unsheltered Individuals	222	304	316	390	334	-56	-14%
Total Homeless Persons	2,008	2,098	2,067	2,279	2,209	-70	-3%
Number of Sheltered Families	312	247	203	204	193	-11	-5%
Number of Unsheltered Families	3	0	1	2	16	14	700%
Number of Total Families	315	247	204	206	209	3	1%
Sheltered Chronically Homeless Individuals	116	146	157	153	156	3	2%
Unsheltered Chronically Homeless Individuals	73	68	96	138	163	25	18%
Total Chronically Homeless Individuals	189	214	253	291	319	28	10%
Sheltered Veterans	104	156	156	153	138	-15	-10%
Unsheltered Veterans	25	37	23	32	23	-9	-28%
Total Veterans	129	193	179	185	161	-24	-13%
Sheltered Unaccompanied Youth (up to 24)	67	63	107	100	97	-3	-3%
Unsheltered Unaccompanied Youth (up to 24)	19	23	19	16	23	7	44%
Total Unaccompanied Youth (up to 24)	86	86	126	116	120	4	3%

System Performance Measures Summary

	2016	2017	2018	2019	2020	2019-20 Change	% Change
Rate People Return to Homelessness in 6 Months	12.2%	11.7%	10.5%	9.5%	7.1%	-2.4%	N/A
Number of People who are Homeless for the First Time	4,001	4,351	3,516	3,519	2,817	-702	-19.9%
Rate People Exit from ES, SH, TH, and RRH to PH	50.6%	31.9%	42.0%	38.6%	54.7%	16.2%	N/A
Rate People in PSH and OPH Retain or Exit to PH	85.8%	92.2%	93.5%	92.6%	93.2%	0.5%	N/A

Housing Inventory Count Summary

	2016	2017	2018	2019	2020	2019-20 Change	% Change
Emergency Shelter (ES)	1,379	1,696	1,655	1,685	1,705	20	1%
Transitional Housing (TH)	837	629	775	876	893	17	2%
Permanent Supportive Housing (PSH)	1,141	1,362	1,348	1,373	1,275	-98	-7%
Rapid Re-Housing (RRH)	136	563	638	615	672	57	9%

Award Summary

	2016	2017	2018	2019	2020	2019-20 Change	% Change
Continuum of Care (CoC)	\$7,532,204	\$7,835,720	\$7,877,964	\$7,768,816	\$8,089,516	\$320,700	4%
Emergency Solutions Grants (ESG)	\$1,951,761	\$2,723,827	\$1,934,349	\$2,190,279	\$2,255,454	\$65,175	3%