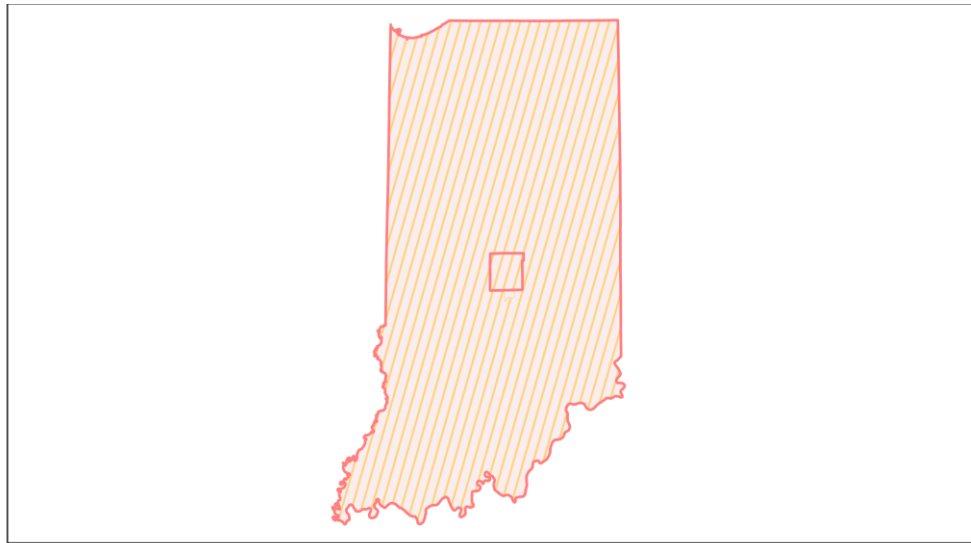
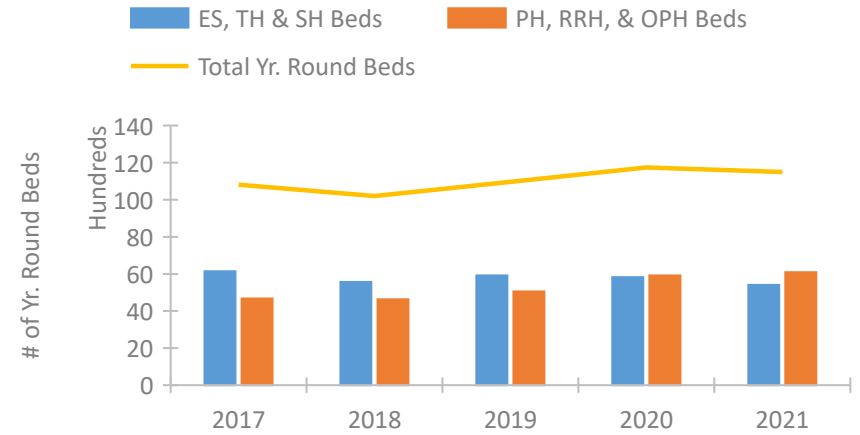


## Indiana Continuum of Care Performance Profile

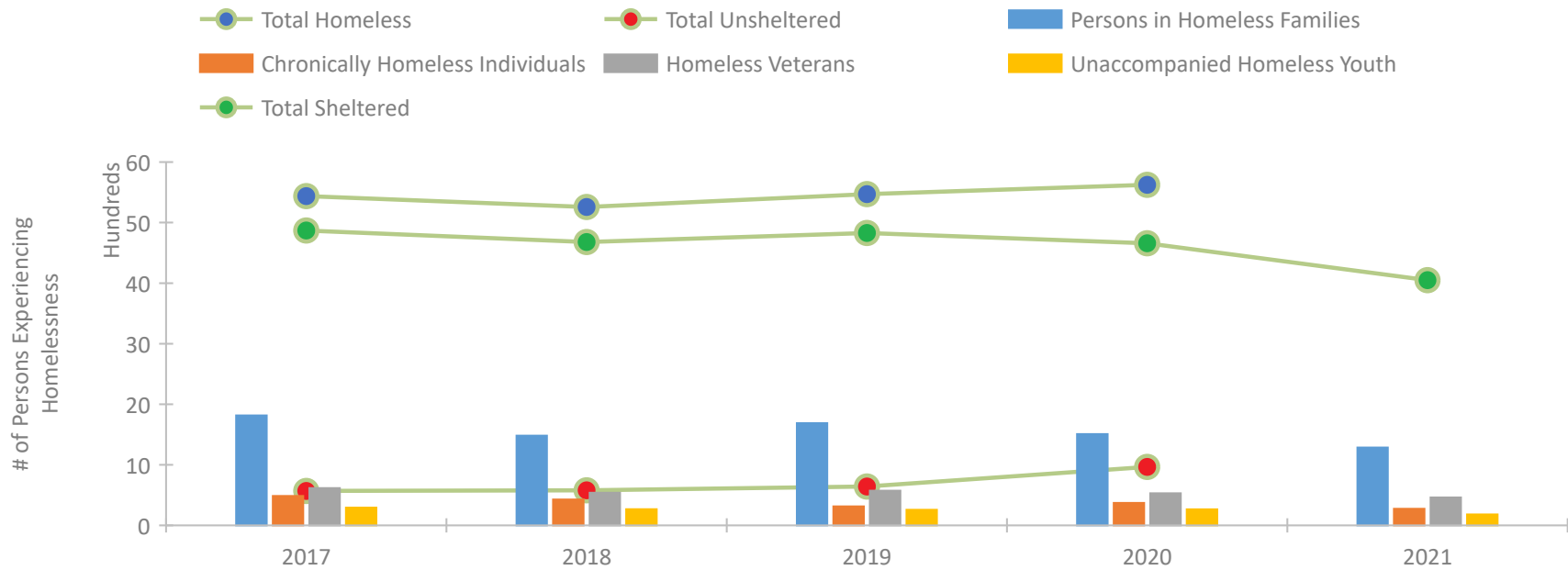


2021 CoC Boundaries 2020 CoC Boundaries

### Housing Inventory Count by Program Type



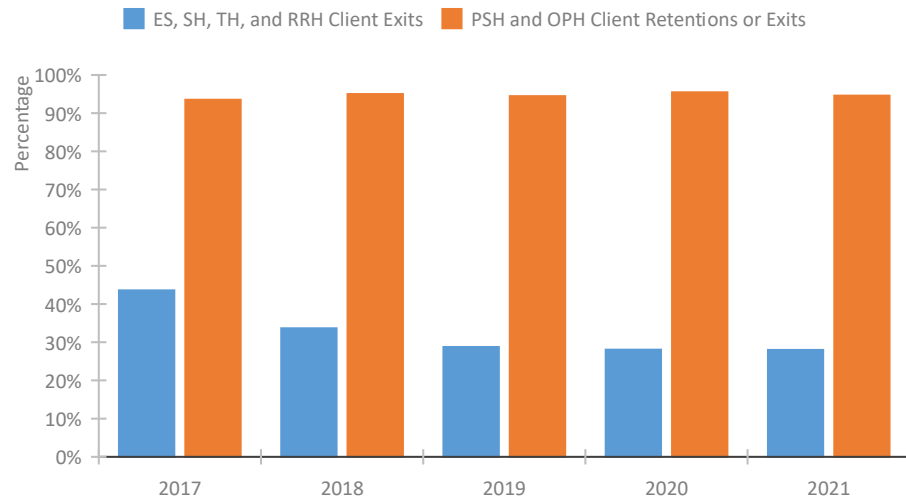
### Homeless Population – Point-in-Time (PIT) Count\*



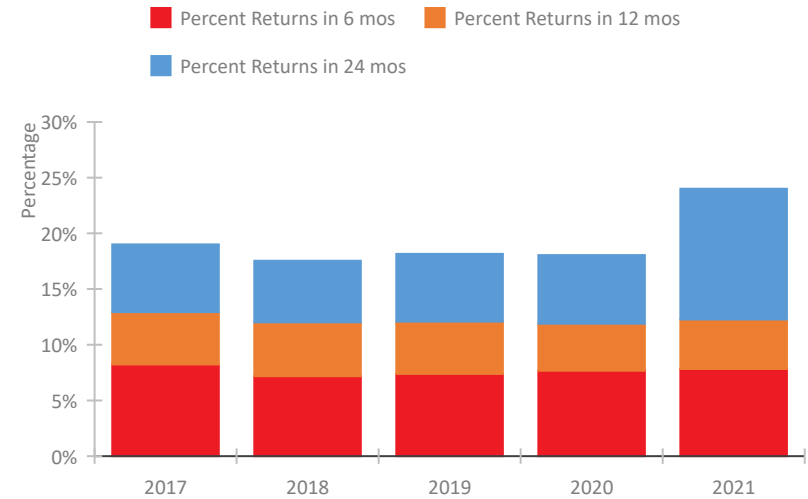
\*In 2021, HUD gave communities the option to cancel or modify the unsheltered survey portion of their counts based on the potential risk of COVID-19 transmission associated with conducting an in-person survey. As a result, HUD has excluded the unsheltered population sub-totals and all unsheltered sub-population data for this reporting period. The user is cautioned that the unsheltered and total homeless counts reported here may be missing data.

## Indiana Continuum of Care Performance Profile

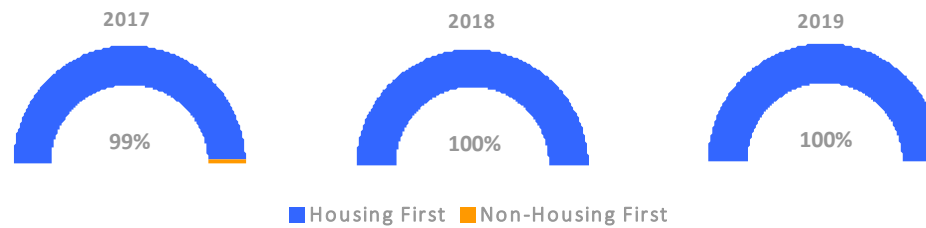
### Exits to Permanent Housing by Program Type



### Returns to Homelessness Over Time



### Proportion of Housing First Projects by Year†



### Number of Projects by Year

	2017	2018	2019
Housing First Projects	95	93	91
Non-Housing First Projects	1	0	0

†2021 Data unavailable at the time of report publication. In 2020 HUD awarded renewal projects noncompetitively, therefore no new data was collected and Housing First data remains the same from 2019 to 2020.

## Data Summary: Indiana

### Point-In-Time Count Summary\*

	2017	2018	2019	2020	2021	2020-21 Change	% Change
Number of Sheltered Persons in Families	1,787	1,474	1,659	1,478	1,285	-193	-13%
Number of Unsheltered Persons in Families	28	8	29	30	0	-30	-100%
Number of Sheltered Individuals	3,082	3,205	3,170	3,181	2,765	-416	-13%
Number of Unsheltered Individuals	541	571	613	936	--	--	--
<b>Total Homeless Persons</b>	<b>5,438</b>	<b>5,258</b>	<b>5,471</b>	<b>5,625</b>	<b>4,050</b>	<b>-1,575</b>	<b>-28%</b>
Number of Sheltered Families	567	478	536	473	408	-65	-14%
Number of Unsheltered Families	9	3	8	9	--	--	--
<b>Number of Total Families</b>	<b>576</b>	<b>481</b>	<b>544</b>	<b>482</b>	<b>408</b>	<b>-74</b>	<b>-15%</b>
Sheltered Chronically Homeless Individuals	432	381	264	306	274	-32	-10%
Unsheltered Chronically Homeless Individuals	54	47	50	64	--	--	--
<b>Total Chronically Homeless Individuals</b>	<b>486</b>	<b>428</b>	<b>314</b>	<b>370</b>	<b>274</b>	<b>-96</b>	<b>-26%</b>
Sheltered Veterans	569	491	529	460	462	2	0%
Unsheltered Veterans	46	48	43	70	--	--	--
<b>Total Veterans</b>	<b>615</b>	<b>539</b>	<b>572</b>	<b>530</b>	<b>462</b>	<b>-68</b>	<b>-13%</b>
Sheltered Unaccompanied Youth (up to 24)	252	223	209	200	180	-20	-10%
Unsheltered Unaccompanied Youth (up to 24)	42	45	49	66	--	--	--
<b>Total Unaccompanied Youth (up to 24)</b>	<b>294</b>	<b>268</b>	<b>258</b>	<b>266</b>	<b>180</b>	<b>-86</b>	<b>-32%</b>

### System Performance Measures Summary

	2017	2018	2019	2020	2021	2020-21 Change	% Change
Rate People Return to Homelessness in 6 Months	8.2%	7.2%	7.4%	7.7%	7.8%	0.2%	N/A
Number of People who are Homeless for the First Time	9,966	13,711	12,589	10,654	10,876	222	2.1%
Rate People Exit from ES, SH, TH, and RRH to PH	43.6%	33.6%	28.8%	28.1%	28.0%	-0.1%	N/A
Rate People in PSH and OPH Retain or Exit to PH	93.5%	95.0%	94.5%	95.5%	94.6%	-0.9%	N/A

### Housing Inventory Count Summary

	2017	2018	2019	2020	2021	2020-21 Change	% Change
Emergency Shelter (ES)	3,988	3,823	4,255	4,206	4,185	-21	0%
Safe Haven (SH)	50	100	52	76	74	-2	-3%
Transitional Housing (TH)	2,104	1,645	1,609	1,539	1,149	-390	-25%
Permanent Supportive Housing (PSH)	3,667	3,631	3,757	4,231	4,176	-55	-1%
Rapid Re-Housing (RRH)	929	903	1,120	1,222	1,453	231	19%
Other Permanent Housing (OPH)	78	96	174	466	460	-6	-1%

### Award Summary

	2017	2018	2019	2020	2021	2020-21 Change	% Change
<b>Continuum of Care (CoC)</b>	\$19,300,787	\$22,701,327	\$25,413,103	\$26,312,522	\$29,147,859	\$2,835,337	11%
<b>Emergency Solutions Grants (ESG)</b>	\$7,206,310	\$5,423,874	\$5,614,831	\$5,840,925	\$5,845,729	\$4,804	0%
<b>Youth Homelessness Demonstration Program (YHDP)</b>	--	\$3,881,278	--	--	--	--	--

\*In 2021, HUD gave communities the option to cancel or modify the unsheltered survey portion of their counts based on the potential risk of COVID-19 transmission associated with conducting an in-person survey. As a result, HUD has excluded the unsheltered population sub-totals and all unsheltered sub-population data for this reporting period. The user is cautioned that the unsheltered and total homeless counts reported here may be missing data.