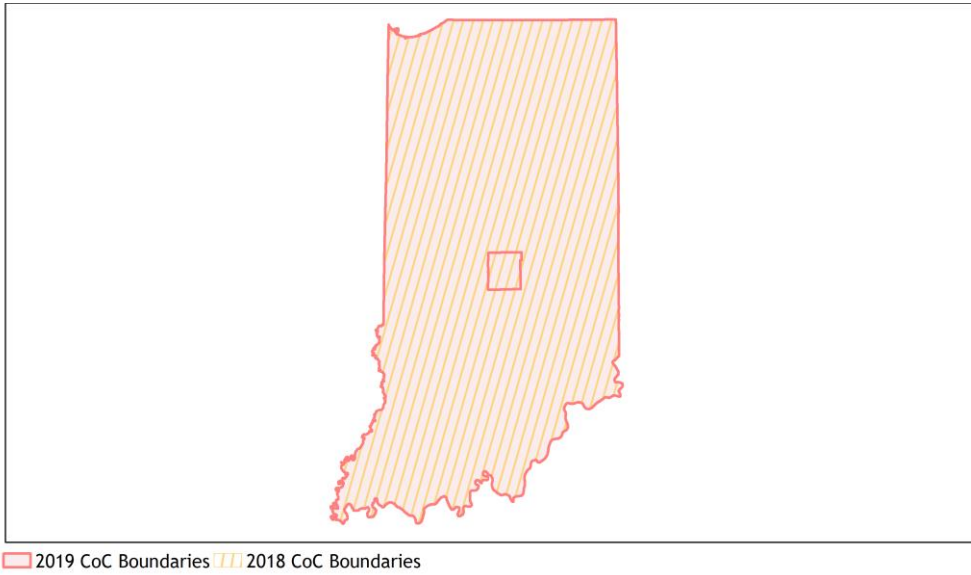
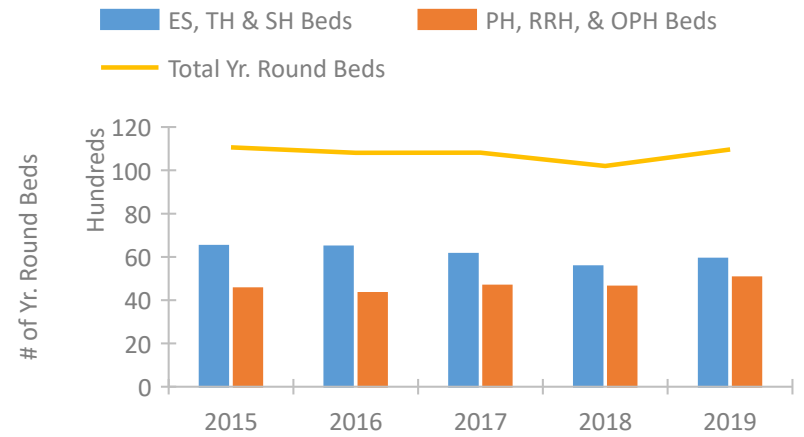


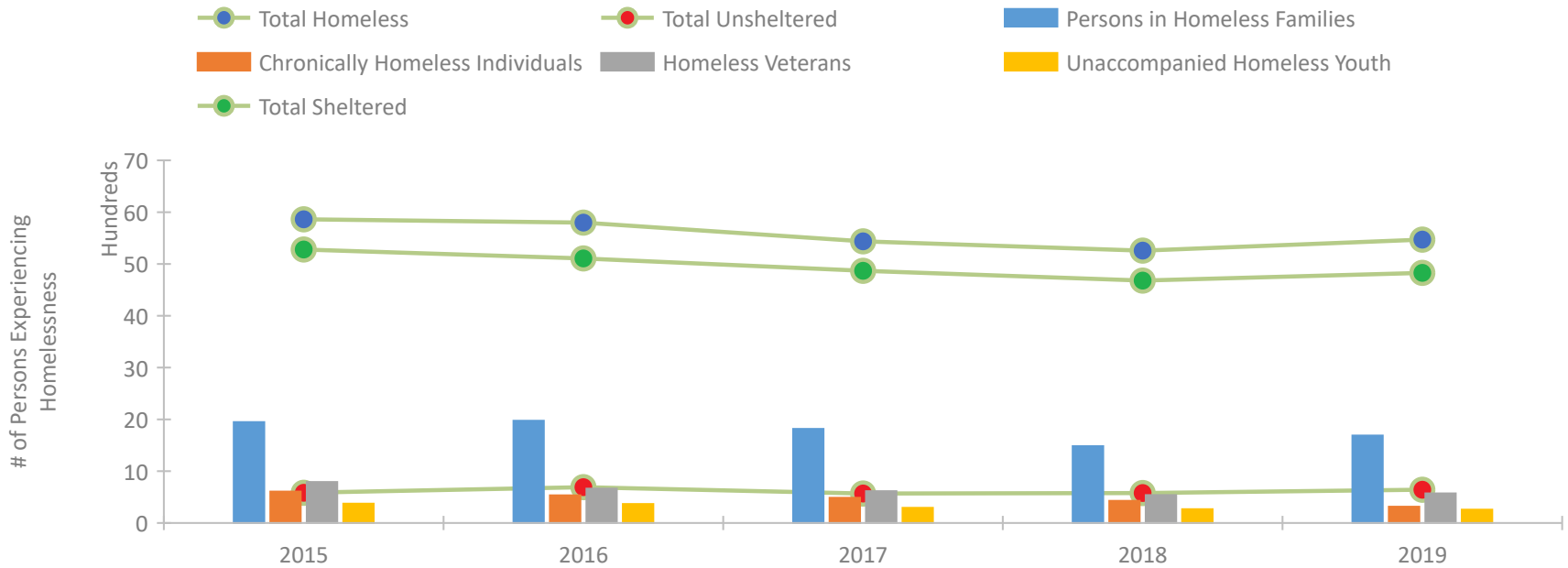
Indiana Continuum of Care Performance Profile



Housing Inventory Count by Program Type

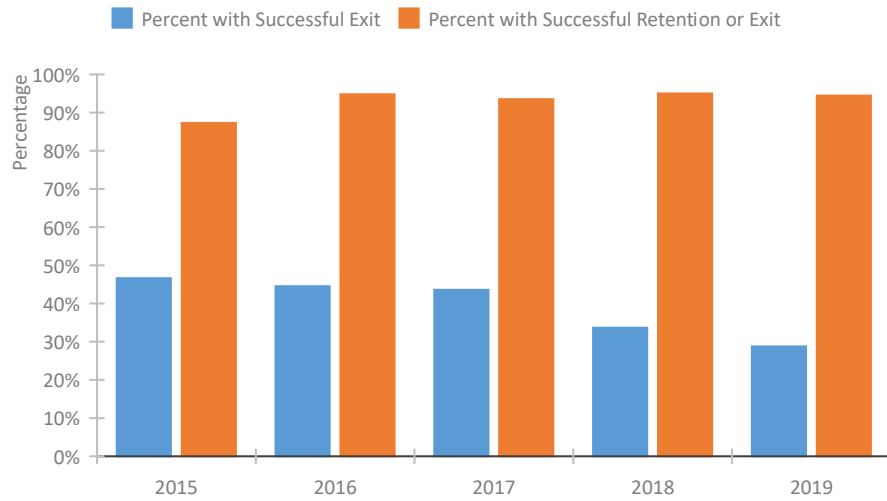


Homeless Population – Point-in-Time (PIT) Count

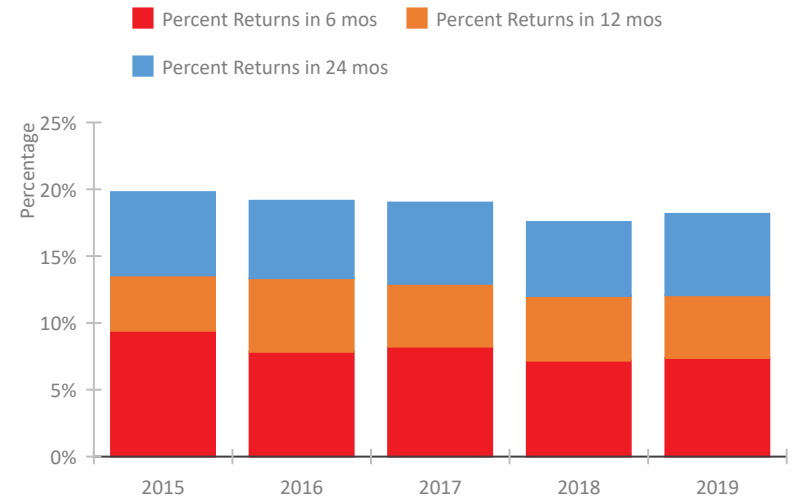


Indiana Continuum of Care Performance Profile

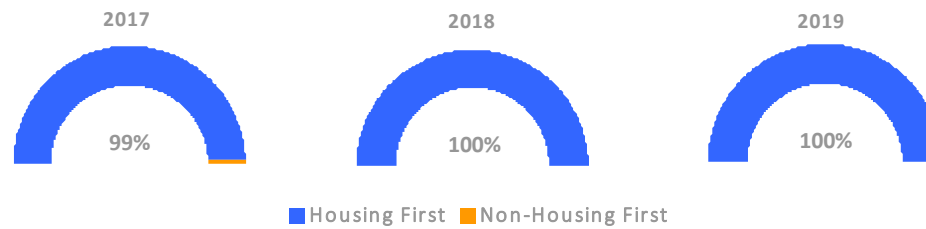
Exits to Permanent Housing by Program Type



Returns to Homelessness Over Time



Proportion of Housing First Projects by Year



Number of Projects by Year

	2017	2018	2019
Housing First Projects	95	93	91
Non-Housing First Projects	1	0	0

Data Summary: Indiana

Point-In-Time Count Summary

	2015	2016	2017	2018	2019	2018-19 Change	% Change
Number of Sheltered Persons in Families	1,927	1,949	1,787	1,474	1,659	185	13%
Number of Unsheltered Persons in Families	22	25	28	8	29	21	262%
Number of Sheltered Individuals	3,353	3,158	3,082	3,205	3,170	-35	-1%
Number of Unsheltered Individuals	561	666	541	571	613	42	7%
Total Homeless Persons	5,863	5,798	5,438	5,258	5,471	213	4%
Number of Sheltered Families	631	604	567	478	536	58	12%
Number of Unsheltered Families	5	5	9	3	8	5	167%
Number of Total Families	636	609	576	481	544	63	13%
Sheltered Chronically Homeless Individuals	450	319	432	381	264	-117	-31%
Unsheltered Chronically Homeless Individuals	158	215	54	47	50	3	6%
Total Chronically Homeless Individuals	608	534	486	428	314	-114	-27%
Sheltered Veterans	726	614	569	491	529	38	8%
Unsheltered Veterans	64	49	46	48	43	-5	-10%
Total Veterans	790	663	615	539	572	33	6%
Sheltered Unaccompanied Youth (up to 24)	333	294	252	223	209	-14	-6%
Unsheltered Unaccompanied Youth (up to 24)	40	71	42	45	49	4	9%
Total Unaccompanied Youth (up to 24)	373	365	294	268	258	-10	-4%

System Performance Measures Summary

	2015	2016	2017	2018	2019	2018-19 Change	% Change
Rate People Return to Homelessness in 6 Months	9.4%	7.8%	8.2%	7.2%	7.4%	0.2%	N/A
Number of People who are Homeless for the First Time	11,965	11,358	9,966	13,711	12,589	-1,122	-8.2%
Rate People Exit from ES, SH, TH, and RRH to PH	46.6%	44.5%	43.6%	33.6%	28.8%	-4.9%	N/A
Rate People in PSH and OPH Retain or Exit to PH	87.3%	94.8%	93.5%	95.0%	94.5%	-0.5%	N/A

Housing Inventory Count Summary

	2015	2016	2017	2018	2019	2018-19 Change	% Change
Emergency Shelter (ES)	3,715	3,918	3,988	3,823	4,255	432	11%
Safe Haven (SH)	50	50	50	100	52	-48	-48%
Transitional Housing (TH)	2,746	2,511	2,104	1,645	1,609	-36	-2%
Permanent Supportive Housing (PSH)	3,171	3,631	3,667	3,631	3,757	126	3%
Rapid Re-Housing (RRH)	1,248	581	929	903	1,120	217	24%
Other Permanent Housing (OPH)	132	118	78	96	174	78	81%

Award Summary

	2015	2016	2017	2018	2019	2018-19 Change	% Change
Continuum of Care (CoC)	\$16,336,086	\$17,889,804	\$19,300,787	\$22,701,327	\$25,413,103	\$2,711,776	12%
Emergency Solutions Grants (ESG)	\$5,454,902	\$5,434,207	\$7,206,310	\$5,423,874	\$5,614,831	\$190,957	4%
Youth Homelessness Demonstration Program (YHDP)	N/A	--	--	\$3,881,278	--	--	--